

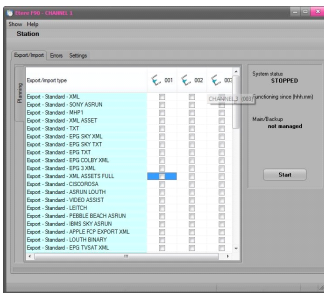
ETERE F90

Etere F90 provides a more efficient connection between two different systems.

Etere F90 is a module that provides a more efficient connection between two different systems and guarantees the maximum accuracy in the information importing and exporting processes, through a fully automated and paperless data flow application.



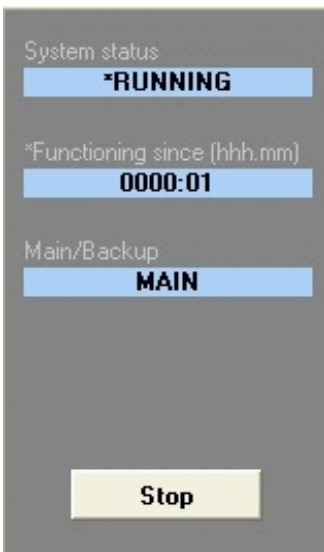
Etere F90 provides a more efficient connection between two different systems and guarantees the maximum accuracy in the process of exporting or importing information through a fully automated, paperless data flow application. The benefits of the automation of this process are evident, as human mistakes which could cause the interruption of the work processes are completely avoided. The application is particularly helpful when the periodical export or import of this data becomes a part of the natural workflow of a station. Etere F90 introduces a completely new concept since, in the broadcast industry, the playlist is traditionally imported in the automation one day before and then all the changes are done in the automation itself, Etere F90 revolutionizes this approach through the use of an auto-update engine which analyzes playlist changes and continuously uploads the new changed playlist only asking the operator for confirmation.



Simple GUI

Etere F90 communicates the operator through a user-friendly graphical screen which changes have been performed and are currently waiting for an approval, at this point, the operator will be allowed to approve them through a secure interface (normally the daily on-air window).

The export can be performed using different formats and to multiple destinations, being possible to export scheduling and as-run data each time an approval is done; additionally, Etere F90 can update the accounting system and provide information through a web-integrated interface.



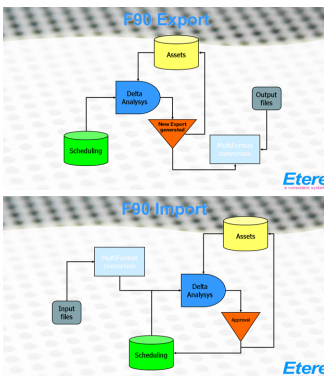
Automated and Manual

Etere F90 allows to perform export/import operations in two modes, manually and automatically:

- ♦ Automatic: This is the main functioning mode of Etere F90, it can be started once all the operation(s) intended to be automatically performed have been selected.

The automatic export is suggested for stations that need to have a daily report of all events that have gone on air (for legal reasons), by enabling the automatic export, every time a schedule changes, the information will be sent automatically to a previously defined destination.

- ♦ Manual: If needed, manual configuration can also be set up



Import/Export

The application is particularly helpful when the periodical export or import of this data becomes a part of the natural workflow of a station.

Etere F90 import and export features can meet several scenarios, for example, it can be used to:

- ♦ Communicate an [Etere Airsales/ Etere Scheduling](#) system with [Etere Automation](#)
- ♦ Communicate [Etere Scheduling/ Etere Airsales](#) with another automation system
- ♦ Implement an efficient connection between the 2 systems (scheduling and playout)
- ♦ Plan a fully paperless operation between two systems