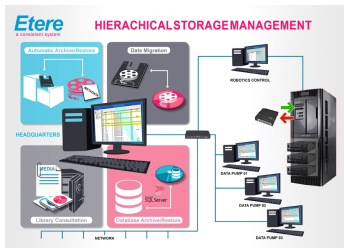


# HSM ARCHIVE

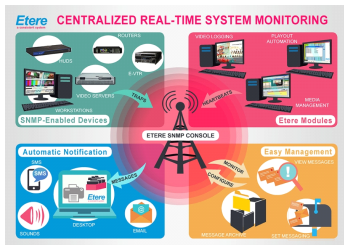
Etere HSM archive manages all archives in a single integrated environment, supporting a mix of proprietary and/or industry file systems under a unified cockpit that provides all information on archives located on-site and across multiple geographic locations.



(Etere logo)



(HSM Diagram)



(Real-time system monitoring)



(Etere Workflow)

Etere solutions manage the end-to-end media lifecycle of broadcast and media enterprises. Take the first step to achieve the results-driven success that you want. We can help you to attain results that are tailored for your success. Talk to us at [info@etere.com](mailto:info@etere.com)

### Make your Content Work for you

In today's fast-changing and creative environment, archiving plays an essential role in running an Eco-system that integrates your content effectively. With its suite of advanced features that power your end-to-end archive management, Etere Archive Management Software including **Hierarchical Storage Management, Disk Library** and **Geographic Redundant Archive** ensures the best tools and customization for your success.

#### ◆Etere Partial Retrieve

Manage content easily with Etere Partial Retrieve. Partial retrieve workflow automates the retrieval of partial segments from media assets.

#### ◆Etere Media Management

Etere Media Management is a highly effective digital content management solution, specifically designed to streamline the process of ingest, indexing, storage and retrieval of digital assets.

#### ◆SNMP Console

Etere SMNP Console is the leading edge technology with a simple, intuitive and user-friendly interface that helps to optimize all the infrastructure performance and availability of a system. The SNMP Console provides a smarter solution since it takes under-control not only Etere solutions but all processes/devices involved in the system.

#### ◆Etere Workflow

Etere Workflow is an essential part of the broadcasting process not only because it allows to set broadcasting management rules but principally because it expresses how modules interact to perform the broadcasting process. Etere Workflow establishes a simple, fully personalized and reliable way to create or modify distinct broadcasting procedures, thus providing a clear view of operational and business performance metrics across the entire enterprise.

#### ◆Media Asset Management

Etere MAM is a software solution created to fully optimize the value of your assets through a centralized management of digital content and associated metadata. Its effective implementation both increases operational efficiency and maximizes the return on investment of digital media. Etere MAM simplifies the process of content management by streamlining the digital workflow, bringing media to the market faster and in multiple formats,



Optical Disc Archive

(Sony Disc Archive)



(DiskLibrary icon)



(Amazon web services and Windows Azure)

ensuring an exceptional and frame accurate content. **Basic MAM** is a FREE entry level MAM. It is included in every Etere system, and it offers a cost effective solution to organize your assets.

#### ◆Etere HSM

Etere **Hierarchical Storage Management** is a tool to move and optimize video contents between different media. The data movement policy is applied to get the best compromise between cost and speed. Etere HSM manages all archives in a single integrated environment, supporting a mix of proprietary and/or industry file systems including:

#### ◆ Linear Tape-Open (LTO) storage

Etere HSM supports Linear Tape-Open (LTO) technology, up to LTO8. LTO8 is more powerful than its predecessor with its ability to hold more than twice the capacity of storage. It is also up to 20% more powerful compared to previous generations. LTO supports LTFS, WORM (Write Once Read Many) and AES 256-bit hardware encryption and delivers tape drive-based 256-bit AES encryption to protect sensitive information.

#### ◆ Sony Optical Disc Archive (ODA) Storage

Sony's Optical Disc Archive system is positioned as a tapeless high capacity digital archive system suitable for both nearline and deep archive applications. Tight integration with the Sony Optical Disc Archive platform expands the range of storage technologies supported by Etere solutions and enables Etere's customers the full flexibility to leverage on Sony's capabilities.

#### ◆Etere DiskLibrary

Etere DiskLibrary is a next-generation software solution that manages archive based on sleeping disks. It is a cost-efficient alternative to LTO and ODA libraries and it allows to mix any archive enclosure as well as different disk technologies.

#### ◆Object Storage

Object Storage stores files as objects in a flat structure with embedded metadata. Its benefits include infinite scalability, real-time searchability, extremely fast data retrieval and low operating costs. It boost data durability with erasure coding feature which distributes information across multiple servers, protecting data from the failure of a single server.

#### ◆Cloud Storage

Etere HSM enables the storage of data in logical pools. The physical storage spans multiple servers in multiple locations for high availability and accessibility of data at all times. Cloud storage offers high availability and easy management.

#### ◆Microsoft Azure And Amazon Cloud Archive Integration

Etere's tight integration with Amazon Cloud and Microsoft Azure allows users to access the cloud storage directly, without the use of third party tools or drivers.

Select your requirement from the **Application** and **Products** Menu to explore more!



#### About Etere

Etere was established in 1987 in Italy and it is amongst the worldwide leaders in Media Asset Management (MAM) and channel-in-a-box software solutions. Etere Media Enterprise Resource Planning (MERP) framework of scalable solutions is used by media enterprises across the end-to-end workflow. Etere MERP modular software including Media Asset Management (MAM), Airsales, Ad Insertion, Playout Automation, Broadcast Management System, HSM Archive, NRCS Newsroom, Broadcast Management System, Broadcast video over IP, IP Multiviewer and Live Censorship are built with an innovative architecture, offering the best flexibility and reliability in the market. Etere is headquartered in Singapore, with a dedicated 24/7 support centre in Italy. [info@etere.com](mailto:info@etere.com)