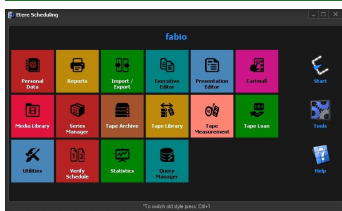
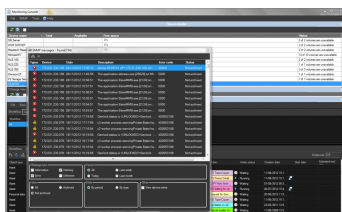


Etere 23: a Complete New Design of the GUI Experience

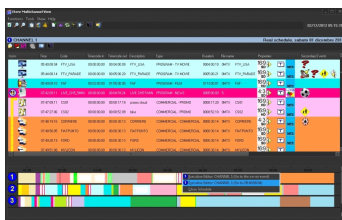
The new Etere release shows a complete redesign of it`s GUI. The product is now more easy to use and with the best GUI of the market



(Main Menu 23)



(History of SNMP Errors)



(Multichannel Editing screen)

Etere, the leading provider of high technology software for broadcasting and media businesses, announced significant new features in the latest release Etere 23.

The Etere R&D Team has done a complete redesign to be more fast, more easy, more powerful

Those are some of the following improvements:

- The new GUI experience with default dark look has been improved to give you a professional interface with less distractions and more focus. The high contrast will help working on any light condition from dark master control rooms to enlightened editing rooms. We also includes different colour GUI experience to match your preference and mood;
- Main menus now follow the Windows 8 GUI to be simple, intuitive and easy to use;
- Etere 23 is "Windows 8 ready", the W8 Compatibility logo will be released soon;
- Etere 23 is SQL2012 compatible, it can use the power of the new database engine,. Etere 23 is also fully retro-compatible with servers running the previous SQL Server 2008 R2 version;
- Etere 23 is easier and faster to install/upgrade than previous versions, all required tasks have been automated to prevent administrators from engaging in any manual intervention;
- A "System Information Service" has been added to the Monitoring Console to provide management information (e.g. CPU utilization, Disk free, Physical Memory free, etc.) from all Etere workstations present in the network and enabled for responding ping requests;
- Monitoring Console's background functions has been improved. SNMP real-time checks, Processes monitoring, Devices ping check and counters collection can be quickly consulted on the status bar;
- Supervisors can now manually assign tasks from the Resource Manager to user groups besides from specific users;
- The proxy preview can use QuickTime files including H264;
- Air Sales reports have been improved to include more data not only from the production database but also from the historical database;
- Multichannel Grid keeps getting better thanks to the improvement of its existing functions. The explosion of events has got more versatile (now is based also on durations) whereas the insertion of black listed events is quicker (now are also automatically placed on booked spaces);
- A new method has been added for managing users within Etere systems. Now users can be identified besides from their Windows/SQL username also according to their domain, it allows companies with multiple domains (e.g. domain forests) to manage all accounts within the entire system as individual users and thus improve access control, rights management and operations tracking.

Allabove mentioned features have been developed with brilliant accuracy to make the operator's job easy, fast and efficient, a remarkable fact that increases the legendary capabilities of Etere software. All those features are integrated in Etere 23...and it is only the first release of the year!

Etere is the System for Lifetime! All upgrades are available free for our customers with a live support contract. Our mission is adding more value to run better your media business.

Etere 23: a Complete New Design of the GUI Experience

Etere is a consistent system!