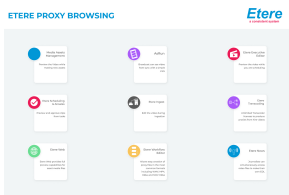
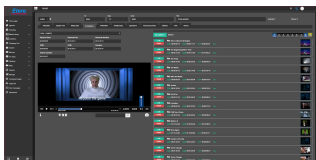


EA1235 ETERE PROXY BROWSING

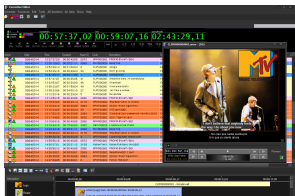
Etere offers a cutting-edge browsing solution seamlessly integrated across the end-to-end Etere Ecosystem. With built-in web integration and streaming capabilities, it enables a smooth workflow from ingest to playout—delivering efficiency and flexibility at every stage.



etere proxy browsing



Etere Web



Scheduling Preview and
Logo

Etere Proxy Browsing is a scalable solution tailored for broadcast and production facilities of all sizes. It supports an unlimited number of browsing stations, allowing seamless access across operations. Simultaneously, multiple transcoding stations can efficiently encode both HiRes and LoRes media, ensuring flexibility in media management. With its intuitive interface, Etere Proxy Browsing simplifies workflows, enhances operational efficiency, and ensures optimal quality at every stage, making it an indispensable asset for professionals in the industry.

Etere Proxy Browsing is an essential and powerful tool designed to enhance the modular ecosystem of the Etere System. Engineered for maximum versatility, it expands the capabilities, functionality, and seamless integration of all Etere software modules, including **Etere Media Asset Management**, Etere Executive Scheduling, and Etere Ingest. With Etere Proxy Browsing, bringing about enhanced efficiency and a more dynamic workflow across the entire **Etere Ecosystem**. Etere Proxy Browsing also allows users to ingest, edit, preview, playout, and archive with a productive digital newsroom.

Etere Proxy Browsing can be integrated into existing Etere modules; any clip can be searched, browsed, selected, and edited with all related secondary events. Etere has adapted, as the first in the world, the revolutionary concept of the Etere Ecosystem that integrates internal and external management information for greater efficiency across the entire enterprise. **Etere Ecosystem** is a software solution that incorporates all the company's information to facilitate the flow of information between all departments.

Stay connected in distributed work environments with Etere browsing, designed to promote increased collaboration and performance across the enterprise.

Key Features

- ☐ J&S and Audio Scrub Broadcast
- ☐ Secondary events preview
- ☐ Full logo preview
- ☐ Full Subtitle preview
- ☐ User-Friendly Interface
- ☐ Frame accurate playback
- ☐ Remote VTR panel control
- ☐ WMV and Mpeg 1-2-4 support
- ☐ Recording and preview at the same time
- ☐ Useful for previewing asset's media files
- ☐ Availability from any network Etere PC
- ☐ Simple and easy-to-use interface
- ☐ Specific HiRes, proxy and logged video preview
- ☐ Frame-accurate viewing and scrubbing
- ☐ Multilanguage support of subtitles and audio tracks
- ☐ Inclusion of the most common playback controls



Comprehensive Tool

Etere Browsing allows different operators to access the same clip simultaneously. It supports jog & shuttle functions. It can also be accessed with a simple click from any part of Etere, including traffic and scheduling interfaces. Additionally, Etere Web integration provides secure remote access to the Etere Database from anywhere, only with a simple PC, away from central facilities. Broadcasters can view playlists and manage scheduling/payout operations remotely.



Etere Ecosystem

- ☐ **Media Asset Management (MAM)**: Create, organise, preview and enrich media assets concurrently on the same interface
- ☐ **AsRun**: Broadcaster can see the synchronisation of video frames with a simple click
- ☐ **Etere News**: Journalists can concurrently access video files to create their EDL
- ☐ **Etere Executive Scheduling**: Preview the video while scheduling
- ☐ **Etere Executive Scheduling & Airsales**: Preview and approve clips from tasks
- ☐ **Etere Ingest**: Edit the video during ingestion
- ☐ **Etere Transcoder**: Unlimited transcoder licenses to produce proxies from hires video
- ☐ **Etere Web**: Provides full preview capabilities for asset media files
- ☐ **Etere Workflow**: Allows easy creation of proxy files in the most common formats, including WMV, MP4 H264 and MOV

