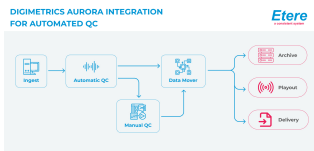
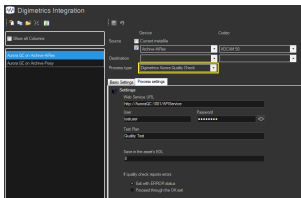


ETERE DIGIMETRICS AURORA QC

The innovative integration that delivers a next generation QC workflow for ETERE cloud storage!



Integrated Aurora QC
Diagram



Digimetrics

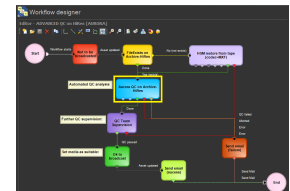
Aware of the increasing need for verifying the quality of digital media stored in cloud environments, ETERE provides the ability to include a **Digimetrics Aurora** quality check test in workflows for media files stored in Etere cloud-devices.

ETERE has integrated AURORA to ensure the quality of content before transfers, archive and playout. The SOAP-based integration streamlines the QC process with versatile workflows and easy-to-use GUI that overlaps Aurora QC's verification units running in background.

QC results are automatically compiled in the ETERE database in the form of EDL marks and PDF reports linked to verified media. The key Etere Ecosystem integration enables operators to review media that has reported QC issues and to make editing decisions from both central and remote locations using **Etere Web** clients.

Key Features

- ☐ Cost-effective, software-only and fully scalable
- ☐ Streamlined and automated workflow control
- ☐ Nvidia CUDA GPU and multi-core processing
- ☐ Fast and simultaneous file access
- ☐ Customizable QC control levels
- ☐ Industry's standard codecs & wrappers support
- ☐ Numerous audio, video and metadata tests
- ☐ Report analytics and notification
- ☐ Standard IT hardware requirements



Control Detection Artefacts

Visual artifacts:

- ☐ Macro-block Noise/Cloud, Up-conversion, Field Order Swaps,
- ☐ Tape/Digital Hits, Black/Freeze Frames, Letter-boxing/Pillar-boxing,
- ☐ Color Bars, PSE Detection, etc.

Audio artifacts:

- ☐ Silence, Drop-outs, Peaks (dBTP, PPM, dBFS),
- ☐ Average Levels (R128, ATSC, ARIB), Clipping,
- ☐ Snaps/Clicks/Pops, Phase Swaps, etc.

Metadata artifacts:

- ☐ 608&708 captions, Teletext,
- ☐ DVB subtitles, SDB/ARIB,
- ☐ Transport/Program Stream, etc.

Hardware Requirements

- ☐ **Processor:** Intel Xeon E5-26xx HT and 4 cores per VU
- ☐ **Network:** Gigabit Ethernet (up to 4 VUs), 10Gb Ethernet or fiber connection (more than 4 VUs)
- ☐ **Operating System:** Windows Server 2012, Server 2008 R2, Windows 8, Windows 7 64-bit
- ☐ **Memory:** 2GB plus additional 1GB per VU
- ☐ **Hard Drive:** 80GB or higher 10,000 RPM or better (recommended)
- ☐ **GPU:** Any TCC-capable NVIDIA Kepler GPU with at least 1.5GB of memory

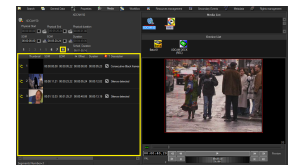
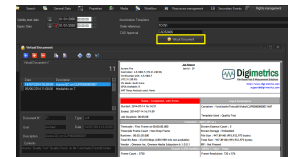
Etere Ecosystem

As usual with **Etere Ecosystem**, high flexibility, scalability and efficiency are guaranteed for Digimetrics quality checks performed against media stored in the ETERE cloud storage. Intelligent workflows enable automating media operations, resource management, and information sharing, allowing further workflow QC tasks to be added wherever manual human supervision is required.

The integration of Digimetrics is a significant leap forward for flexible and efficient quality control as it eliminates unnecessary drop folders and bandwidth usage as content quality is tested without moving the file from the cloud.

Digimetrics Technology

Digimetrics solutions include file-based QC (broad range of controls including metadata gatekeeping, baseband video/audio quality and distribution constraint verification), file-based playback (full resolution, frame-accurate and frame-synchronous for integrated review of QC reporting) and automatic correction (of audible and visual artifacts and compliance constraints within file-based assets).



The Etere Advantage

- ☐ Dedicated worldwide 24/7 support
- ☐ Free upgrades
- ☐ Mark of quality, consistency and reliability since 1987
- ☐ The only company to offer an end-to-end workflow solution for any broadcast and media company