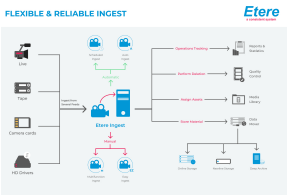
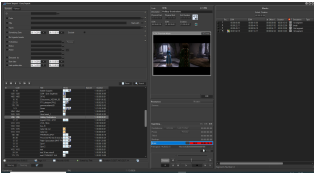


# EA1222 ETERE INGEST

Etere Ingest is a complete and flexible software solution that significantly improves a broadcasting system's ingestion through an integrated, modular, and effective architecture capable of ingesting all common feeds.



Etere Ingest

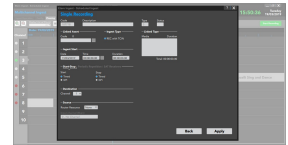


## Ingest Easy

**Etere Ingest** is a flexible software that can fulfil all types of ingestion requirements, including manual, scheduled, and automatic. It is a highly effective solution to ingest from all the most common feeds and store the ingested media in the primary system based on user-defined workflows. It can also capture SD/HD media in real time from virtually any video source, broadcast stream, FTP, and IP stream. Users can capture media from all common feeds into cloud storage and apply to it any required workflow, thus ensuring reliable and exceptional performance throughout the ingestion workflow. Etere Ingest is a cost-effective and efficient solution that significantly improves the ingestion process of any media enterprise. A global license manages Etere Ingest and can be accessed from any PC with a valid Etere Client Access License (CAL).

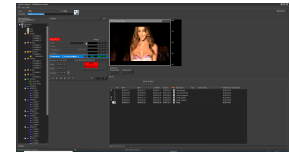
## Key Features

- ☐ One-click ingest based on predefined profiles
- ☐ Advanced ingest fully customizable by operators
- ☐ Automatic ingest based on scheduled operations
- ☐ HiRes preview for quality check of ingested media
- ☐ Workflow-based media duration update and physical file deletion
- ☐ Simplified SDI copies between video servers
- ☐ Backup recorded video files on videotapes
- ☐ Detailed and statistical report of ingesting operations
- ☐ Automatic checks of file, duration, and timecode issues
- ☐ Dedicated module to archive and restore files from XDCAM carts
- ☐ Supports 64-bit and microservices



## Quality Assurance

Ingest is an important part of any production and broadcast workflow—mistakes at this stage can be both costly and time-intensive to fix. Etere delivers a smart balance between video quality, storage efficiency, and operational cost. Its all-in-one platform is engineered to ingest content from virtually any analog or digital source in the industry. Since ingest quality plays a pivotal role—especially when media is archived for decades or more—Etere ensures precision from the outset. Etere Ingest supports multi-channel, multi-format, and multi-resolution recording, delivering uncompromising broadcast quality while keeping overheads low.

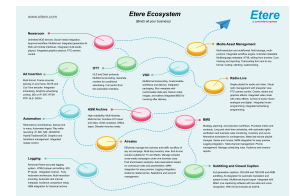


Ingest is a critical component of any production or broadcast workflow, where errors can lead to significant costs and time-consuming corrections. Etere offers a sophisticated solution that strikes an optimal balance between video quality, storage efficiency, and operational cost. Its all-in-one platform is designed to ingest content from virtually any analog or digital source in the industry, ensuring seamless compatibility.

## Etere Ecosystem Integration

**Etere Ingest** is part of the Etere Ecosystem suite; this key characteristic enables tight integration with other Etere modules such as:

- ☐ **Etere Resource Management:** Assign tasks from users to ingest media
- ☐ **DataMover:** Transfer ingested HiRes files
- ☐ **Etere ETX:** Use ETX to acquire media into IT servers
- ☐ **Scheduling:** Alert on scheduled but not yet captured assets
- ☐ **Etere Web:** Monitor unrecorded assets expected to be aired
- ☐ **Etere Workflow:** Auto-execution of workflows after ingest (e.g., QC, Proxy, etc.)



## Etere ETX Technology

**Etere Ingest**, seamlessly integrated with Etere ETX, delivers superior digital content acquisition through an advanced and versatile architecture:

- ☐ Supports IP input and output with flexible frame rate options and independent IP output services
- ☐ Enables live video preview during ingest directly via Etere ETX
- ☐ Fully 4K-enabled, with comprehensive IP support for both HD and SD workflows
- ☐ Compatible with SDI output through Blackmagic and medialooks video cards
- ☐ Offers broad compression format support, including MPEG-2, H.264, DV25, HDV, DVCPro, DVCPro50, DVCProHD, IMX30/40/50, XDCAM EX, XDCAM HD, AVC-Intra, AVC-HD, WMV, ProRes, and HEVC
- ☐ Handles multiple graphics layers, squeeze transitions, and rich animation effects
- ☐ Simultaneously generates a WMV proxy file during ingest for streamlined workflows
- ☐ Built-in graphics engine supports overlays of static and animated logos, along with multi-layer crawlers (up to 8 layers)
- ☐ Compatible with major wrapper formats including AVI, MXF, GXF, and QT

