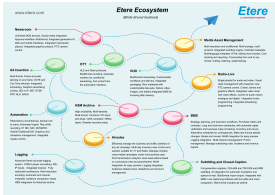


ETERE ECOSYSTEM

Etere Ecosystem is a total software solution that is able to connect and manage the complete lifecycle of a Media/IT company.



Key Features



Etere Ecosystem

Etere Ecosystem is a total software solution able to connect and manage the complete lifecycle of a Media/IT company. Etere Ecosystem is an extension of E.R.P. - Enterprise Resources Planning- applied to Media/IT companies, and is the core solution for the newest way to revolutionize the media/IT management structure, in synthesis, it is definitely a system ready to grow with your company.

Etere Ecosystem is able to connect all the activities of a multimedia company and integrate internal and external management information across an entire organization thanks to the use of "smooth and intelligent" workflows, becoming the most effective way to control all business processes and costs while providing a big advantage: integration of all myriad processes with consequent saving of time and expenses.

Etere Ecosystem is a 100% software solution that is able to integrate all company information to facilitate the flow of information between all departments. Etere gives your company the opportunity to have only one system to manage production facilities (newsroom, production, postproduction, playout, etc.) and administration tools (scheduling, planning, CRM and Business Intelligence).

Etere Ecosystem is different from other systems based on old aged methods and individual experience, it was developed based on the new Etere framework which manages and tracks the entire workflow, embracing: financial management, supply chain and CRM, deal and contract management, work orders, production, dubbing, ingest, editing, indexing, subtitling, resource allocation, operational costs, air sales, user permissions, digital rights, multi format and multi platform content delivery, licensing, domestic and international sales, distribution and billing.

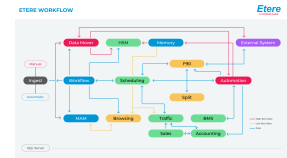
Key Features

- ☐ Cross-platform, multi-format and multi-channels
- ☐ Customizable, streamlined and tailored tapeless workflows and interfaces
- ☐ Real-time scheduling, conflicts management and e-mail alerts
- ☐ Total paperless control over resources, processes and costs
- ☐ Tightly integrated billing and accounting features
- ☐ Low total cost of ownership and new business opportunities
- ☐ Efficient collaboration between departments, partners and suppliers
- ☐ Project change management improved with enterprise security
- ☐ Scalable and flexible architecture that is suited for any environments
- ☐ Combines cost-effectiveness with high reliability
- ☐ Streamline operations and increase efficiencies across departments
- ☐ To be connected in distributed work environments
- ☐ Collaborative workflows
- ☐ Provides business visibility from a single platform
- ☐ Real-time interaction between different systems
- ☐ Fast connection between departments
- ☐ Safe and controlled access



New Etere Approach

The revolution introduced by Etere aims to "glue" all areas and departments inside a company into a single system, planning and developing the complex real-time interaction between Multimedia Resource Management, Etere Media Asset Management (MAM), Multimedia File Exchanging Management, Video-and-audio-based Business Operation, Etere Resource Management and Planning, Sales and Customers Relationship Management, Media Archive Storage, Program Scheduling, Commercial Accounting, Automated Payout, Production and Legal Office.



Quality of Work

Etere is able to save administrators time and effort by deploying a total cost control and reporting service, providing powerful and real-time business information for executives and managers, controlling costs and budgets, reducing errors, connecting workgroups, enhancing communications, minimizing duplication, and improving strategy. **Etere Ecosystem** provide a comprehensive overall view (without "information islands") to make real time information available for management, at anytime from anywhere thanks to the external access available through an Etere Web integration that includes availability and bookings (ingest/editing rooms) of all resources, personnel shifts, equipment maintenance schedules and out-of-service days.

