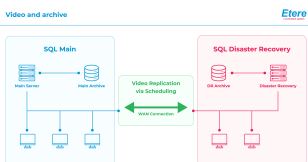


## EA1359 ETERE DISASTER RECOVERY

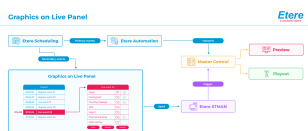
Etere Disaster Recovery empowers broadcasters with a reliable and faster disaster recovery solution that ensures minimal downtime and reduces the time spent on manual monitoring.



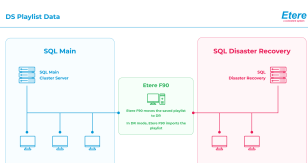
Video and Archive



New-Price-Management



Graphics-on-Live-Panel



DS-Playlist-data

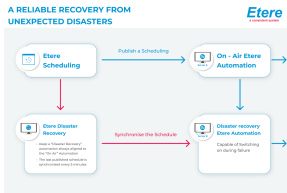
**Etere Disaster Recovery** is a fully integrated, robust solution that automatically protects your data with reliable contingency and quick response time in the event of a fault that prevents the automation from running as planned. Etere Disaster Recovery will be automatically activated when there is a failure in the main server to ensure minimal downtime and manual monitoring. In addition to physical redundancy, Etere Disaster Recovery also ensures logical redundancy. The cost-effective solution allows users to maintain a Disaster Recovery automation server in a different location from the main servers to provide complete recovery capabilities in case of a failure on the main servers due to a power outage, flooding, earthquake, etc.

Etere Disaster Recovery ensures all your critical data is secure with a disaster recovery automation aligned with the "On-Air" automation at any time. The powerful tool synchronizes every 5 minutes to ensure consistent backup of the last published schedule on the Disaster Recovery Automation to ensure that an updated copy is always ready to be used when needed.

In addition, Etere Disaster Recovery (DR) serves as a secured storage solution that allows you to save your media files onto the cloud. It provides secure file storage, transfer, and recovery whenever needed.



Etere logo



disaster recovery

## Key Features

Protect your mission-critical broadcast operations and ensure business continuity with Etere Disaster Recovery, which has the following capabilities:

- ☐ Set a recovery database (mirrored to the main one) as a primary database
- ☐ Activate the service broker on the recovery database if required
- ☐ Copy scheduling playlists from one station to another
- ☐ Automatic activation in the event of system failure
- ☐ Protection against both physical and logical redundancy
- ☐ Integrative with your cloud infrastructure
- ☐ Capable of substituting the crashed automation and continuing the transmission
- ☐ Quick response and synchronization
- ☐ Fully customizable to fit any environment
- ☐ Controlled access and parameters



## Remote Control

Etere **Disaster Recovery** allows users to control both source and destination automation remotely

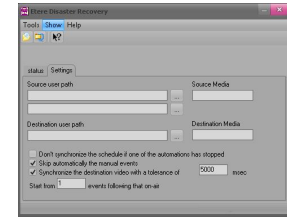
- ☐ Centralised control, even for off-site users
- ☐ Safe and controlled access
- ☐ High visibility and protection of your media assets
- ☐ Real-time sharing of data
- ☐ Keeps all resources connected



## Customisable Configuration Settings

With an easy-to-use and fully customizable interface, operators will have complete flexibility to configure

- ☐ Source path and media
- ☐ Destination path and media
- ☐ The option to disable synchronization of schedule if one of the automation has stopped
- ☐ Automatically skip manual events
- ☐ Synchronize destination video with a specified tolerance



## Etere Ecosystem

Etere **Disaster Recovery** is perfectly integrated and fully configurable with the Etere Ecosystem, leveraging all available technologies and providing shared information with the following modules:

- ☐ Etere Executive Scheduling
- ☐ Etere Automation
- ☐ Etere ETX

