

EA6847 ETERE CONSULTANCY

Etere Consultancy offers experience, innovation and reliability. It is the tool for driving changes in the media industry.



CONSULTANCY SERVICES

Etere Consultancy Service ensures reliability in handling a wide range of IT needs. Today's businesses innovate and run rapidly, resulting in changing market conditions. As such, companies need to keep up the pace if they wish to stay relevant. Etere is able to help you transform your business in the right way, guiding you on the migration, re-architecting and re-engineering of your IT assets. We strive to empower users with our revolutionary architecture that helps to streamline operations and increase efficiency.

Since 1987, we have been a trusted provider of broadcast solutions and recommendations. Our consultants work closely with stakeholders in order to effectively manage changes, devise the right enterprise architecture model and implement transformation roadmaps aligned to your business goals. One of our strengths is our successful collaboration with every team player in the project change. Every team player must be an active part of the change. Your success matters to us and our aim is to help you with the journey. With Etere, you will get results that you can trust.

About Etere

Etere was established in 1987 in Italy and it is amongst the worldwide leaders in Media Asset Management (MAM) and channel-in-a-box software solutions. Etere Media Enterprise Resource Planning (MERP) framework of scalable solutions are used by media enterprises across the end-to-end workflow. Etere MERP modular software including Media Asset Management (MAM), Airsales, Ad Insertion, Playout Automation, Broadcast Management System, HSM Archive, Newsroom Computer System (NRCS), Broadcast Management System, Broadcast video over IP, Censorship, Closed Captioning and Subtitle Management are built with an innovative architecture, offering the best flexibility and reliability in the market. Etere headquarters is in Singapore and it has a worldwide 24/7 support.



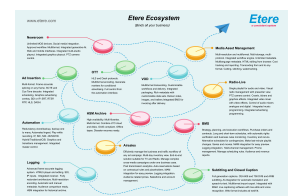
Scope of the Project

Defining the final scope of project is one of the important phases of a project in order to create a timeline and the final target to be achieved. This is the basis of every project. We can help you figure out your aims for your company. Backed by [Etere's mark of reliability and consistency since 1987](#), we can help you to deliver new capabilities and efficiencies to your business.



Map Actual Workflow & Constraints

A map of the actual state is important since every project starts with an existing infrastructure. This will be changed in future, but it is important to know how and why it was designed in the context of today's model. Understanding the current business flow is the most important basis to evaluate what can be changed.



Explore Budget Limits and Manage Changes

Everything can be done with unlimited time and money, but this is not a real scenario. In order to select the best strategy, every project must be tuned up to meet the budget, technology limits and the timeline. Etere helps organizations and their teams by adjusting them for changes, whether it is a technology system that requires training, a process that need integration into existing work habits, or a strategic direction that needs the understanding and support of stakeholders.



Enterprise Architecture: Analysis & Design

Requirement analysis is critical to the success of a development project. It is the first step of the entire project. Etere consultants are continuously studying and analyzing the entire company structure to create an efficient architecture system. They collect key requirements and analyze them to determine whether they are unclear or incomplete. After resolving these issues, specific documents with collaboration of the customer's project managers are created and all internal and external departments in the changing are involved in evaluation process.

