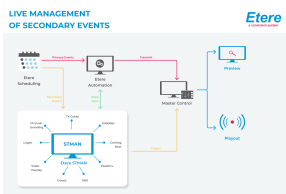


EA6755 ETERE STMAN

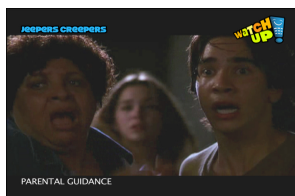
The solution is designed for easy and comprehensive real-time management of all secondary events.



st man



Software for secondary object



STMan Capture

Key Features

Etere STMan incorporates into a single module all graphical features, including:

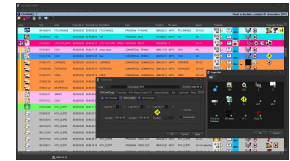
- ☐ An advanced graphic controller for the automation playout
- ☐ Ability to control multiple graphics for a single primary event; any line within the playlist can have a virtually unlimited number of secondary events
- ☐ Send parameters to the graphics retrieved from both the schedule and the asset



Secondary Events

Etere STMan manages secondary events associated with scheduled events at their broadcasting time:

- ☐ Secondary objects to send information about current/following scheduled events to a certain subtitle
- ☐ Passthru commands, to send hexadecimal commands to devices
- ☐ Secondary video player to overlay a video onto the main event
- ☐ Subtitles Management, to manage subtitles associated with scheduled events
- ☐ Graphics Management, to manage all the graphics associated with scheduled events (e.g., network idents, coming up next, titles, etc.)
- ☐ Coming next, to promote the following events on the schedule
- ☐ Next Event Countdown, to count the start of the next event
- ☐ Next Event Runtime, to check all the information about the next event (title, duration, etc.) and secondary events associated (logos, subtitles, etc.)



Tight Integration & Streamlined Management

Etere STMan can make all the necessary changes during the on-air approach. It keeps itself synchronized with the scheduled and the automation schedules, making it a real-time software that can manage even last-minute changes.

Etere STMan timeline displays any discontinuity in a sequence of secondary events so the operators can act to fix any discrepancies. The timeline synchronizes directly with the editor for fast and accurate last-minute adjustments.

Etere STMan minimises graphics preparation in the graphics system and creates accurate branding on the fly.

With only a few templates, your broadcast will be enhanced. The design of your channel will always be perfect, and the operator's work will become much more straightforward.



Full ETX Support

Etere STMan is perfectly integrated with Etere ETX to manage seamlessly:

- ☐ Supports NDI, SDI, and IP
- ☐ 4K, SDI, and IP support
- ☐ Overlay of static and animated logos on eight layers
- ☐ Crawls, multiple graphics, and WebGL graphics overlays
- ☐ Subtitles, closed captions including CEA 608 and CEA 708
- ☐ Tickers
- ☐ Picture-in-Picture (PIP) capabilities: Insert multiple overlays of live graphics and videos over a streaming video

