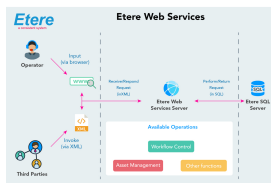


EA6753 ETERE WEB SERVICES

Interface your Etere system with the external world using a SOA compliant architecture.



Web Services Features of Etere

Etere Web Services is the solution to interface Etere with external systems, enabling communication with the different applications in your system. Etere Web Services is based on a Service-oriented architecture (SOA) open architecture and includes functionality as a suite of interoperable services that can be used within multiple, separate systems from several business domains. Etere Web Services is the software that makes itself available over TCP/IP so that other programs can request information to it; the interface is described in a XML based language (WSDL) and the methods are accessed using XML messages (SOAP). Etere also provides REST access. In order to provide its customers with a reliable and easy-to-use application, Etere uses cutting-edge technology for web services, integrating it into its distributed architecture to bring about a quality service. Every Etere user has a different permission profile to enhance security controls, so users will be allowed access to execute only the functions specifically granted to them.

SOA Technology

Service-oriented architecture (SOA) is a flexible set of design principles used during the phases of systems development and integration in computing. A system based on a SOA will package functionality as a suite of interoperable services that can be used within multiple, separate systems from several business domains.

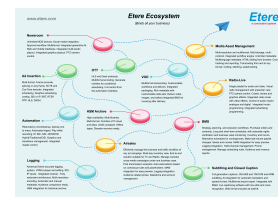
A SOA - service oriented architecture - is essentially a collection of applications that communicates with each other; applied to Etere Web Service means that any software used in the TV channel are connected.



Etere Ecosystem

Etere Web Services integrates all applications use in your TV station for a Web-based environment and uses multiple implementation platforms. It converts all your application into a Web-application.

Etere Web Service's purpose is publishing some of the most important Etere functions (e.g. assets management, workflow control, etc) available to mainly Non-Etere programs through the use of standardized messages, thus Etere allows the TV channel to communicate its own software with Etere. It has been developed to support interoperable application-to-application interaction over a TV channel network.



[illegible]

- ```
<?xml version="1.0" encoding="utf-8" ?>
<soap:Envelope xmlns:m="http://www.w3.org/2003/05/soap-envelope"
xmlns:s="http://schemas.xmlsoap.org/2003/05/soap-envelope"
xmlns:u="http://schemas.xmlsoap.org/2003/05/soap-envelope" ?>
<soap:Body>
<GetAssetByIdResponse xmlns="http://www.w3.org/2003/05/soap-envelope" ?>
<GetAssetByIdResult><string><GetAssetByIdResult>
</GetAssetByIdResult>
</GetAssetByIdResponse>
</soap:Body>
</soap:Envelope>
```

- 
- ```

using System;
using System.Net.Http;

namespace HelloWorld
{
    class Program
    {
        static void Main(string[] args)
        {
            var client = new HttpClient();
            var response = client.GetAsync("http://127.0.0.1:2380/HelloWorld?name=JohnDoe").Result;
            var content = response.Content.ReadAsStringAsync().Result;
            Console.WriteLine(content);
        }
    }
}

```
- REQUEST**
- RESPONSE**