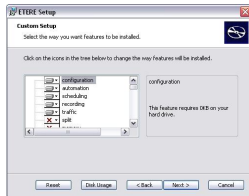
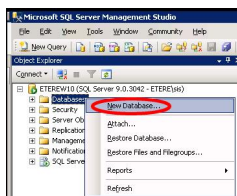


## Etere Installation Manual

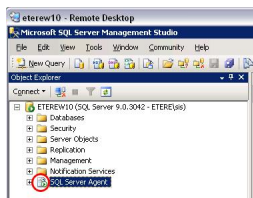
This document has been developed to provide information on how to carry out the software install preparation, as well as the installation process itself.



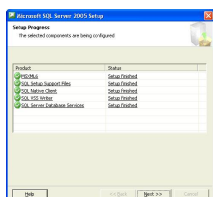
Etere Custom Setup



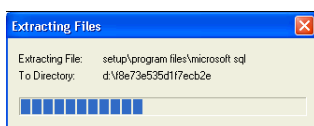
Microsoft SQL Server Management Studio



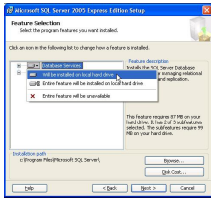
eterew10 Remote Desktop



Microsoft SQL Server 2005 Setup



Extracting files



Microsoft SQL Server 2005  
Express Edition Setup

## Etere Installation Guide

### Introduction

The purpose of this document is to complement the Etere's installation package, providing information on how to prepare the software installation, as well as, the installation process itself, following you can find a brief

introduction to this chapter:

- Preliminary considerations: Provides technical specifications and the minimum hardware and software requirements for the PC's on which Etere will be installed,
- Installing Etere: Illustrates on how to install for the first time an Etere system in a fairly easy way,
- Upgrading Etere: Explains accurately how to carry out the upgrade of an Etere system,
- Network Security Policies: Guide the TX manager through the security design of its network.

### Preliminary Considerations

#### Etere Requirements

##### SQL Database

Microsoft SQL2008/SQL2005 is the ETERE basic requirement for any configuration. Any ETERE installation package is provided with a free SQL EXPRESS license, compatible to any available MS SQL service pack.

Actually, ETERE requires regular service pack updates.

SQL EXPRESS License limitations can change any time according to Microsoft policies. Up to now, Microsoft limits the SQL EXPRESS to configurations with a maximum of 5 PC's connected to the SQL .

All the ETERE users must have got permissions to read and write the ETERE databases. The rights to access the SQL database are given by either Ms Windows login or SQL login. The former, Ms Windows login, ensures low security levels but an easier way to access SQL. The latter, SQL login, ensures high security levels; any single user is provided with his own SQL username and password; only administrators can read Login data; Users' permissions are set on each PC using the ETERE Main Configuration Screen.

#### User Permissions

Users must have the Proper ETERE rights set on their PC. Administrator permissions are required during installation only when an update occurs.

Any ETERE application needs Read/Write permissions to access ...\\program files\\ETERE. Actually, ETERE writes logs in the folders: ...\\program files\\ETERE\\logs or ...\\program files\\ETERE\\user.xxx\\logs.

#### Operating System

ETERE supports the following platforms:

- Windows XP professional
- Windows 2000
- Windows 2003 server
- Windows 2008 server

Sometimes, previously mentioned platforms don't display some features usually related to multimedia; then the

OS needs to be updated to the latest MS Service Pack. Etere requires also .net framework 2.0 or more installed.

#### Installation Directory

Etere suggest to create one installation directory in one Pc and share it. If the system is installed in a LAN

environment, all the client installation can be performed from this shared directory.

The Installation directory can be the CD itself, but we suggest to use a directory, because it's more easy to share the updated files, without burning a new CD.

The installation directory sharing must be 'read only'

#### WAN Environment

In a wan environment the remote PC can be installed locally from the original CD. Any update must be performed with a new CD or downloading the new files.

#### Hardware

For detailed information regarding the minimum and recommended hardware required for running an Eteresystem, please refer to the chapter Etere Hardware Specifications.



Etere installation

## Installing Etere

On the installation CD, you will find the SETUP.Msi in the \Etere directory. This setup file is able to perform the installation on your PC which can be launched from the top CD menu and will guide you through an easy-to-follow process to carry out the installation of the Etere's software.

If you wish to create a shared installation directory, go to advanced installation. Furthermore, remote users can be installed from the same Etere CD, and any update can be carried out also from it, this will simplify the installation and update process over slow WAN lines.

## Microsoft SQL Server Installation

Since ETERE System uses a database approach to store and manage safely all the broadcasting data, it is needed to have Microsoft SQL and the latest windows service pack installed on the PC before installing Etere, the recommended versions are Microsoft SQL Server 2005 or 2008 (Express, Workgroup, Standard or Enterprise edition), the most important differences and limitations between each edition in terms of scalability, performance and manageability can be appreciated in the Microsoft's related page.

You are always free to contact the Etere support team, who will help you to determine which edition of Microsoft SQL is better for your system.

## How to Install Microsoft SQL Server 2005 Express Edition

In order to install Microsoft SQL Server 2005 Express Edition you must have Administrator rights and the following software must be already installed:

- .NET Framework 2.0 (You can use Control Panel > Add/Remove Programs to see your .NET Framework version)
- Windows Installer 3.1 (To check your Windows Installer version, click Start > Run. Then type: `msiexec /?`)

1. On the Etere CD that you have received, you can find a free redistribution version of Microsoft SQL Server 2005 Express Edition (SQLEXPRESS.EXE), double-click it to begin the installation. Required installation files will be unpacked before installation commences.
2. Accept the licence agreement then click 'Next'. Required setup support files will be installed after clicking on 'Install' in the Installing Prerequisites window.
3. Click Next to continue. SQL Server Setup will scan your PC for existing installs and will present you with a Welcome screen. Click Next again to proceed.
4. In System Configuration Check click 'Next' once this has finished.
5. Enter your registration information and then click Next, from the feature selection list make sure Database Services is selected for installation.
6. Etere doesn't require the additional features to be installed. Click Next to continue.
7. You should now choose an instance name for the database server. You can leave this as the default 'SQLEXPRESS' or choose an instance name of your own, for example the name of your Broadcasting Station. Click Next to continue.
8. Now choose the authentication type. This relates to the database logon

authentication, not ETHERE user authentication. After choosing the authentication method here, ETHERE can be installed using either method, but if you use Mixed Mode authentication you will need to make a note of your chosen 'sa' password. For ease use Windows Authentication Mode. Click Next to continue.

9. Optionally enable error and usage data reporting, then click Next to continue.

10. Click Install to begin installation. Files will be installed, you'll see green checkmarks next to each component as it installs successfully. If the installation is successful you will see the screen shown below. Click Next to continue.

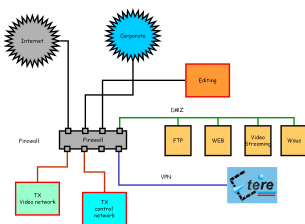
11. In the Setup Progress window, click Next then Finish to end the installation process. Your database server

is now installed and ready to be used with ETERE.

12. When restarting the computer, for checking if the SQL service works just open the Microsoft SQL Server

13. After you have installed Microsoft SQL Server 2005, you need to create a new database. This database will be used to archive all data and information groups by tables necessary for Etere to work. You can create this database using the utility Microsoft SQL Server Management Studio, just by making right-click on the 'Databases' item from the options tree, selecting 'New Database', giving it a name and after clicking OK the database will be created.

14. Once all these steps have been completed, Microsoft SQL Server will be ready to be used with Etere.



Suggested network connection

## Installing Etere

On the installation CD, you will find the SETUP.Msi in the \Etere directory. This setup file is able to perform the installation on your PC which can be launched from the top CD menu and will guide you through an easy-to-follow process to carry out the installation of the Etere's software.

If you wish to create a shared installation directory, go to advanced installation. Furthermore, remote users can be installed from the same Etere CD, and any update can be carried out also from it, this will simplify the installation and update process over slow WAN lines.

## Microsoft SQL Server Installation

Since ETERE System uses a database approach to store and manage safely all the broadcasting data, it is needed to have Microsoft SQL and the latest windows service pack installed on the PC before installing Etere, the recommended versions are Microsoft SQL Server 2005 or 2008 (Express, Workgroup, Standard or Enterprise edition), the most important differences and limitations between each edition in terms of scalability, performance and manageability can be appreciated in the Microsoft's related page.

You are always free to contact the Etere support team, who will help you to determine which edition of Microsoft

SQL is better for your system.

#### How to Install Microsoft SQL Server 2005 Express Edition

In order to install Microsoft SQL Server 2005 Express Edition you must have Administrator rights and the following software must be already installed:

- .NET Framework 2.0 (You can use Control Panel > Add/Remove Programs to see your .NET Framework version)

- Windows Installer 3.1 (To check your Windows Installer version, click Start > Run. Then type: `msiexec /?`)

1. On the Etere CD that you have received, you can find a free redistribution version of Microsoft SQL Server 2005 Express Edition (SQLEXPRESS.EXE), double-click it to begin the installation. Required installation files will be unpacked before installation commences.

2. Accept the licence agreement then click 'Next'. Required setup support files will be installed after clicking on 'Install' in the Installing Prerequisites window.

3. Click Next to continue. SQL Server Setup will scan your PC for existing installs and will present you with a Welcome screen. Click Next again to proceed.

4. In System Configuration Check click 'Next' once this has finished.

5. Enter your registration information and then click Next, from the feature selection list make sure Database Services is selected for installation.

6. Etere doesn't require the additional features to be installed. Click Next to continue.

7. You should now choose an instance name for the database server. You can leave this as the default 'SQLEXPRESS' or choose an instance name of your own, for example the name of your Broadcasting Station. Click Next to continue.

8. Now choose the authentication type. This relates to the database logon authentication, not ETERE user authentication. After choosing the authentication method here, ETERE can be installed using either method, but if you use Mixed Mode authentication you will need to make a note of your chosen 'sa' password. For ease use Windows Authentication Mode. Click Next to continue.

9. Optionally enable error and usage data reporting, then click Next to continue.

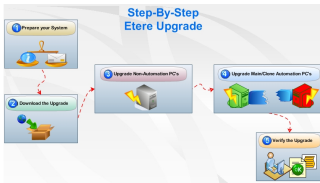
10. Click Install to begin installation. Files will be installed, you'll see green checkmarks next to each component as it installs successfully. If the installation is successful you will see the screen shown below. Click Next to continue.

11. In the Setup Progress window, click Next then Finish to end the installation process. Your database server is now installed and ready to be used with ETERE.

12. When restarting the computer, for checking if the SQL service works just open the Microsoft SQL Server

13. After you have installed Microsoft SQL Server 2005, you need to create a new database. This database will be used to archive all data and information groups by tables necessary for Etere to work. You can create this database using the utility Microsoft SQL Server Management Studio, just by making right-click on the 'Databases' item from the options tree, selecting 'New Database', giving it a name and after clicking OK the database will be created.

14. Once all these steps have been completed, Microsoft SQL Server will be ready to be used with Etere.



Step-by-Step Procedure

## Installing Etere

On the installation CD, you will find the SETUP.Msi in the \Etere directory. This setup file is able to perform the installation on your PC which can be launched from the top CD menu and will guide you through an easy-to-follow process to carry out the installation of the Etere's software.

If you wish to create a shared installation directory, go to advanced installation. Furthermore, remote users can be installed from the same Etere CD, and any update can be carried out also from it, this will simplify the installation and update process over slow WAN lines.

## Microsoft SQL Server Installation

Since ETERE System uses a database approach to store and manage safely all the broadcasting data, it is needed to have Microsoft SQL and the latest windows service pack installed on the PC before installing Etere, the recommended versions are Microsoft SQL Server 2005 or 2008 (Express, Workgroup, Standard or Enterprise edition), the most important differences and limitations between each edition in terms of scalability, performance and manageability can be appreciated in the Microsoft's related page.

You are always free to contact the Etere support team, who will help you to determine which edition of Microsoft SQL is better for your system.

## How to Install Microsoft SQL Server 2005 Express Edition

In order to install Microsoft SQL Server 2005 Express Edition you must have Administrator rights and the following software must be already installed:

- .NET Framework 2.0 (You can use Control Panel > Add/Remove Programs to see your .NET Framework version)
- Windows Installer 3.1 (To check your Windows Installer version, click Start > Run. Then type: msixec /?)

1. On the Etere CD that you have received, you can find a free redistribution version of Microsoft SQL Server 2005 Express Edition (SQLEXPRESS.EXE), double-click it to begin the installation. Required installation files will be unpacked before installation commences.

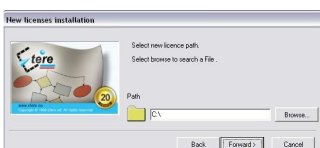
2. Accept the licence agreement then click 'Next'. Required setup support files will be installed after clicking on 'Install' in the Installing Prerequisites window.

3. Click Next to continue. SQL Server Setup will scan your PC for existing installs and will present you with a Welcome screen. Click Next again to proceed.

4. In System Configuration Check click 'Next' once this has finished.

5. Enter your registration information and then click Next, from the feature selection list make sure Database Services is selected for installation.

6. Etere doesn't require the additional features to be installed. Click Next to continue.
7. You should now choose an instance name for the database server. You can leave this as the default 'SQLEXPRESS' or choose an instance name of your own, for example the name of your Broadcasting Station. Click Next to continue.
8. Now choose the authentication type. This relates to the database logon authentication, not ETERE user authentication. After choosing the authentication method here, ETERE can be installed using either method, but if you use Mixed Mode authentication you will need to make a note of your chosen 'sa' password. For ease use Windows Authentication Mode. Click Next to continue.
9. Optionally enable error and usage data reporting, then click Next to continue.
10. Click Install to begin installation. Files will be installed, you'll see green checkmarks next to each component as it installs successfully. If the installation is successful you will see the screen shown below. Click Next to continue.
11. In the Setup Progress window, click Next then Finish to end the installation process. Your database server is now installed and ready to be used with ETERE.
12. When restarting the computer, for checking if the SQL service works just open the Microsoft SQL Server
13. After you have installed Microsoft SQL Server 2005, you need to create a new database. This database will be used to archive all data and information groups by tables necessary for Etere to work. You can create this database using the utility Microsoft SQL Server Management Studio, just by making right-click on the 'Databases' item from the options tree, selecting 'New Database', giving it a name and after clicking OK the database will be created.
14. Once all these steps have been completed, Microsoft SQL Server will be ready to be used with Etere.



New licenses installation

## Installing Etere

On the installation CD, you will find the SETUP.Msi in the \Etere directory. This setup file is able to perform the installation on your PC which can be launched from the top CD menu and will guide you through an easy-to-follow process to carry out the installation of the Etere's software.

If you wish to create a shared installation directory, go to advanced installation. Furthermore, remote users can be installed from the same Etere CD, and any update can be carried out also from it, this will simplify the installation and update process over slow WAN lines.

## Microsoft SQL Server Installation

Since ETERE System uses a database approach to store and manage safely all the broadcasting data, it is needed to have Microsoft SQL and the latest windows service pack installed on the PC before installing Etere, the recommended



versions are Microsoft SQL Server 2005 or 2008 (Express, Workgroup, Standard or Enterprise edition), the most important differences and limitations between each edition in terms of scalability, performance and manageability can be appreciated in the Microsoft's related page.

You are always free to contact the Etere support team, who will help you to determine which edition of Microsoft SQL is better for your system.

#### How to Install Microsoft SQL Server 2005 Express Edition

In order to install Microsoft SQL Server 2005 Express Edition you must have Administrator rights and the following software must be already installed:

- .NET Framework 2.0 (You can use Control Panel > Add/Remove Programs to see your .NET Framework version)

- Windows Installer 3.1 (To check your Windows Installer version, click Start > Run. Then type: `msiexec /?`)

1. On the Etere CD that you have received, you can find a free redistribution version of Microsoft SQL Server 2005 Express Edition (SQLEXPRESS.EXE), double-click it to begin the installation. Required installation files will be unpacked before installation commences.

2. Accept the licence agreement then click 'Next'. Required setup support files will be installed after clicking on 'Install' in the Installing Prerequisites window.

3. Click Next to continue. SQL Server Setup will scan your PC for existing installs and will present you with a Welcome screen. Click Next again to proceed.

4. In System Configuration Check click 'Next' once this has finished.

5. Enter your registration information and then click Next, from the feature selection list make sure Database Services is selected for installation.

6. Etere doesn't require the additional features to be installed. Click Next to continue.

7. You should now choose an instance name for the database server. You can leave this as the default 'SQLEXPRESS' or choose an instance name of your own, for example the name of your Broadcasting Station. Click Next to continue.

8. Now choose the authentication type. This relates to the database logon authentication, not ETERE user authentication. After choosing the authentication method here, ETERE can be installed using either method, but if you use Mixed Mode authentication you will need to make a note of your chosen 'sa' password. For ease use Windows Authentication Mode. Click Next to continue.

9. Optionally enable error and usage data reporting, then click Next to continue.

10. Click Install to begin installation. Files will be installed, you'll see green checkmarks next to each component as it installs successfully. If the installation is successful you will see the screen shown below. Click Next to continue.

11. In the Setup Progress window, click Next then Finish to end the installation process. Your database server is now installed and ready to be used with ETERE.

12. When restarting the computer, for checking if the SQL service works just open the Microsoft SQL Server

13. After you have installed Microsoft SQL Server 2005, you need to create a new database. This database will be used to archive all data and information groups by tables necessary for Etere to work. You can create this database using the utility Microsoft SQL Server Management Studio, just by making right-click on the 'Databases' item from the options tree, selecting 'New Database', giving it a



name and after clicking OK the database will be created.

14. Once all these steps have been completed, Microsoft SQL Server will be ready to be used with Etere.