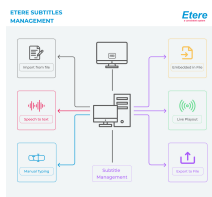


## EA6763 ETERE SUPPORTS GOOGLE SPEECH TO TEXT FOR 120 LANGUAGES

Etere announces closed caption speech-to-text support for up to 120 languages with Google Cloud Speech-to-Text, this is a free add on for all users who have the speech-to-text module.



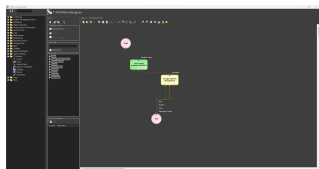
Etere logo



Subtitling with Closed Captions



Google Logo



Google Speech Recognition

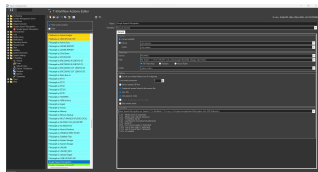
As a leading industry innovator since its inception in 1987, Etere places its users at the forefront of technology with its regular updates and upgrades. **Etere Subtitles Tool for Closed Captions** is now integrated with support for Google Speech-to-Text tool, expanding its reach and enhancing its position as one of the most comprehensive subtitling tool in the market. With Etere software solutions, users are equipped with a system that future proofs their investments and is designed with the technology and system architecture to grow with their future requirements.

Etere Subtitles Tool for Closed Captions supports **Google Cloud Speech-to-Text** which includes support for up to 120 languages, with each language specified within a recognition request's language code parameters. Each language code parameter includes a BCP-47 identifier tag that identifies the language and region/country of the language. With the upgrade, operators are able to convert audio to closed caption text instantly to support a global audience base. Etere is able to support voice-to-text commands, real-time streaming and the processing of voice commands/audio transcription from call centres. Not only that, it is also able to process pre-recorded audio using Google's machine learning technology. For a full list of supported languages, please refer to the attached file.

### Key Features

- Supports over 120 languages and variants (View attachment for the full list)
- Instant streams of text results
- Returns recognition of text from audio in a file
- Analysis of short and long-form audio
- Works with real-life speech with its capability to accurately transcribe proper nouns as well as format dates and numbers
- Integrated with pre-built recognition models
- Digital intelligence with automatic punctuation and word hints
- Unique words and names can be added to the library of text
- Option to filter inappropriate content

For more information, please contact please get in touch with us to arrange a personalized consultation.



Google Speech  
Recognition

## About Etere

Since its beginnings in 1987, Etere has been preparing users for the future. Etere is a worldwide provider of broadcast and media software solutions backed by its mark of excellence in system design, flexibility, and reliability. The revolutionary concept of the Etere Ecosystem promotes real-time collaborations and enhances operational efficiency across the enterprise. Etere Ecosystem software solutions manage the end-to-end media workflow and feature an integrative Web and Windows customizable architecture to fit perfectly in any system.

Etere delivers on its service excellence commitment with 24/7 worldwide support and inclusive software updates. Etere digital technologies and market-proven remote/on-site services, such as consultancy, training, installation, and demonstrations, are ready to run with your business no matter where you are. Etere enhances your adaptability for the future and empowers you with the most innovative software tools to drive your business to greater heights.

To find a media management strategy that works for your business, visit [www.etere.com](http://www.etere.com)

## About Google Cloud Speech-to-Text

Google Cloud Speech-to-Text enables developers to convert audio to text by applying powerful neural network models in an easy to use API. The API recognizes 120 languages and variants, to support your global user base. You can enable voice command-and-control, transcribe audio from call centers, and more. It can process real-time streaming or pre-recorded audio, using Google's machine learning technology. <https://cloud.google.com/speech-to-text/>

