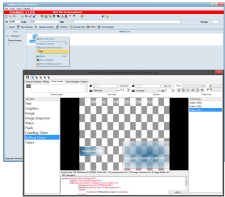
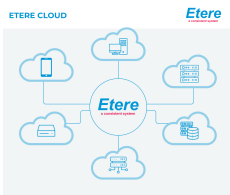


## CHANNEL IN THE CLOUD

Etere Channel in the Cloud encompasses all the features you need for a cloud playout, management and distribution. Be ready for the cloud with Etere's cost-efficiency, speedy deployments, easy scalability and secure remote access.



ETX-G Preview



Etere Cloud diagram

Etere Channel-in-the-Cloud empowers users with broadcast-quality, cost-effective, cloud-based channel playout, management, and distribution. With Etere, you can lower costs, retain better operations control and achieve greater flexibility.

Etere provides a hassle-free and cost-effective approach to cloud playout with a full range of advantages, including:

- Launch channels in the cloud without the high costs associated with traditional hardware and satellite delivery
- Supports NDI/IP/SDI
- Discover new revenue-generating opportunities with the easy expansion of channels
- Channels can be managed from any location and device with an internet connection
- Distribution to all platforms, including satellite, cable, IPTV, web and mobile
- Unified workflows for linear, Video-on-Demand (VOD) and Over-the-Top (OTT) deliveries
- Create unlimited sub-channels for different regions and head-ends
- Insert logo and channel branding directly from the same interface
- Full resiliency and secure access

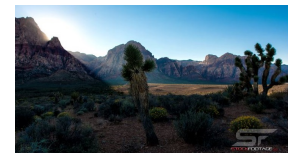
## Key Features

- ☐ Time delay
- ☐ Disaster recovery
- ☐ As-run output file
- ☐ With full IP inputs and outputs
- ☐ Live playlist and live monitoring
- ☐ Cloud Storage with automatic file sync
- ☐ Cloud transcoding/transfer with Multiplex
- ☐ Segment and edit clips directly from the cloud
- ☐ Full SD and HD broadcast quality of 480i, 720p, 1080i and 1080p
- ☐ CEA 608/708 closed caption support for both live and file sources
- ☐ Supports IP Multiviewer for up to 9 display monitors and 30 input sources
- ☐ Playlist preview and scheduling for both automatic and manual insertions
- ☐ Costs are significantly lower than that of standard playout solutions
- ☐ Channels can be controlled from any location with an internet connection
- ☐ Manage CG insertions, including logos, crawlers and animated graphics, directly from the cloud
- ☐ Network providers can launch a channel in the cloud easily without satellite video system setup and hardware complexity
- ☐ Broadcasters can launch separate or sub-channels for different regions or headends, which can also serve as revenue generators
- ☐ No need to send affiliates playout servers when channels are launched in the cloud; cost savings are significantly lower than a traditional setup



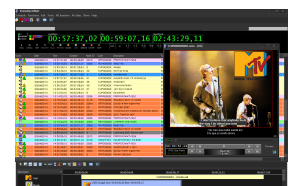
## CG Insertions in the Cloud

Etere supports CG insertions in the cloud, including full support for multiple overlays of 2D/3D graphics, logos, crawlers, tickets and image sequences. It is integrated with a resource editor that allows users to manage the specific functions of the graphics directly from the same interface. Etere supports HTML5-enhanced graphics and all commonly used graphic file formats, including TGA, AVI, MOV, SWF, PNG, JPEG and GIF. Users can preview the graphics directly from the same interface or capture web pages as live multimedia sources.



## Playlist Preview and Scheduling in the Cloud

Etere Channel in the Cloud features a complete playlist preview and scheduling solution that allows users to plan strategic placements of programs, promos and commercials. The integrated solution can manage all aspects of the broadcast schedule, including licensed content, contractual commercials, imported materials and ad insertions. Operators can view real-time statistical analyses from the same interface, such as audience reports, loudness control, confidence reports and delta analysis.



## Captions in the Cloud

Etere Channel in the Cloud supports CEA 608 and CEA 708 closed captions, DVB and ARIB subtitling for both live and file sources. Unlimited web clients are supported, and captions can be inserted instantly, even before broadcast. The import and export of subtitles can be done in all major standard formats. The integrated time delay feature also facilitates the production and delivery of live captions. Etere also features live edits and speech recognition for live captioning.

