

Etere Basic Payout

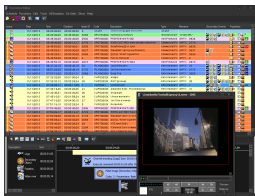
Etere Basic Payout features an easy to use and reliable software to broadcast your content to your viewers with a flexible, software-based architecture that enables broadcasters to pay for only what they need and affordably add features as the business evolves.



etere master control



etx playlist



Executive Editor Screen

The **Etere Basic Payout** is designed for high-performance and advanced production environments, and is crafted to enable media companies to shape and configure their resources to meet their requirements for the complete management of small-scale broadcast operations. It is equipped with all the basic functions needed to manage the end-to-end broadcast operations. It is a reliable, compact and cost-efficient solution for smaller scale operations such as single station setups.

Although the **Etere Basic Payout** package cannot be changed, it can be upgraded to add on services as the business requires. With the **Etere Basic Payout**, users can be assured of top industry quality, reliable service, consistency, and customer service.

- ETX CIB Payout (1 channel) including master control and one router control: Etere ETX is 4K-ready, software-based channel-in-a-box system that comes equipped with full IP in and out capabilities. Add multiple layers of graphics, squeeze, 3D graphic animations, text crawls, logos and flash graphics easily. Integrated with master control, ETX enables a multi-functioning integrated solution, with multi-format and multi-resolution capabilities.
- Freely move Media between ETX and an External NAS Storage: Streamlines the process of ingest, indexing, storage and retrieval of all digital assets. Use any NAS or SAN storage, one volume unlimited capacity
- Ingest: capable of ingestion from SDI and/or IP.
- Up to 2 users (windows and/or web)
- SQL server: Microsoft SQL server for up to 2 users.