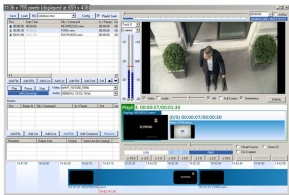


EA1351 ETX TOOLBOX

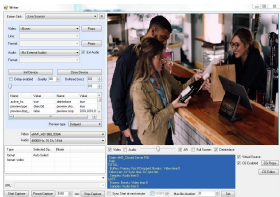
ETX Toolbox is a user-friendly application that allows users to manage their videos on a single interface. With features including editing, preview, and capturing live feeds, you can accomplish all your media editing requirements with Etere.



etx toolbox

The **ETX Toolbox** allows users to capture live broadcast feeds, edit and manage videos. ETX Toolbox is part of the Etere Ecosystem, a framework of software modules that is able to manage your end-to-end workflow.

With Etere ETX Toolbox, users can easily edit or add and delete their playlists, alter the format output of video and audio files in the playlist, and change the background format. Other features include assigning transitions between playlists to ensure a smooth transition from one playlist to the next. Once the editing is done, users can view unlimited previews of their playlists and customize playback perimeters.



etx toolbox capture

Furthermore, Etere features the capability to capture live feeds and add captions into the live feeds before it goes on-air. The capture feature also allows users to store recorded video and audio in their preferred archive.