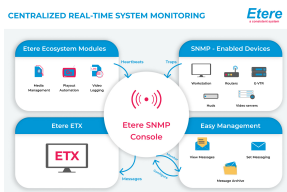


ETERE RADIO MANAGEMENT CONSOLE

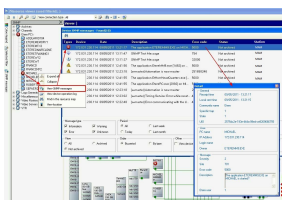
The Radio Management SNMP Console delivers a comprehensive, fully optimised solution that centralises every aspect of your radio broadcast monitoring into one intuitive interface. With proactive status alerts, administrators are empowered to identify and resolve issues instantly—maximising uptime and ensuring peak transmission performance.



Etere logo



SNMP Monitoring Console



snmp

Etere Radio Management delivers industry-leading software solutions designed to safeguard your entire radio ecosystem against unexpected breakdowns. With robust, end-to-end monitoring and a streamlined, user-friendly interface, you can effortlessly track processes, assess infrastructure performance, and manage connected devices—all from a single dashboard.

Smart Alerts

Stay informed with Etere's multi-channel alert system: audible signals, on-screen notifications with detailed descriptions, and comprehensive updates via email or SNMP to your chosen recipients—so you're always in the loop.

Customisable Alarms

Tailor alerts to your operational needs with fully customisable alarm settings that notify you of every event and action within the system. Every activity is logged for full traceability, and alerts can even be sent directly to your mobile, ensuring you're informed wherever you are.

Live Run Insights

Monitor live broadcasting events in real time. Generate instant reports of all aired content with the Live Run feature, giving you data-driven insight as it happens.

Centralised Monitoring

Gain full control over your assets and workflows from one interface. View system-wide status, prioritise critical actions, and manage asset transactions or job queues with precision.

Seamless Accessibility

Access your systems securely from anywhere via a reliable web-based interface—whether you're in the office, on location, or working remotely.

Key Features

- ☐ Streamlined system-wide monitoring and management
- ☐ Real-time status tracking and diagnostic capabilities
- ☐ Integration handshakes with Etere applications to ensure operations run smoothly
- ☐ Control over all Radio Management-enabled processes
- ☐ Automatic logging of system events and operational history
- ☐ Visual overview of the machine room for easy identification of all PCs
- ☐ Web-based access console for seamless system control
- ☐ Enhanced fault visibility for efficient issue isolation
- ☐ Modular interface with distinct panels for focused monitoring of specific functions
- ☐ Centralized management and archiving of console messages, logs, and alerts

