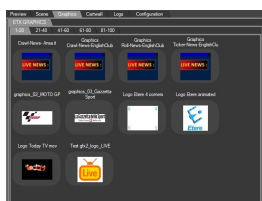
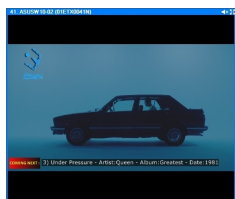


ETERE RADIO GRAPHICS

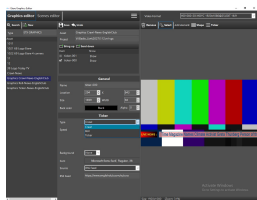
Elevate your radio broadcast to new heights with the seamless management of professional-grade graphics. Etere Radio Graphics transforms your broadcast effortlessly, offering rich features such as logo insertions, dynamic crawlers, captivating animations, and much more. Experience a broadcast like never before, where every visual element is meticulously crafted to captivate your audience and enhance your message.



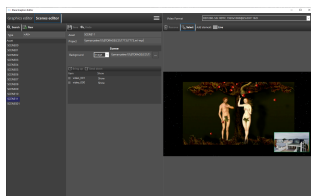
Radio Live Graphics



Radio Live Graphics
Preview



Radio Live Graphics Editor



Scene Editor

Experience the innovation of **Etere Radio Graphics**, a cutting-edge software meticulously crafted to craft professional-grade graphics for live broadcasts or store them seamlessly for post-production. Consolidating all your broadcast graphics needs into a user-friendly interface, Etere Radio Graphics empowers you with a comprehensive suite of tools essential for creating captivating visuals for news segments, quiz shows, sports events, and even weather forecasts. Say goodbye to complexity and embrace the simplicity of elevating your broadcast visuals effortlessly.

Graphics

You can edit and prepare professional graphics on the same interface and create sophisticated CGs with the intuitive CG editor. Etere Graphics Editor features an easy-to-use interface designed to streamline graphics preparation. Users can create and preview their work using the off-air preview mode on the same interface.

The integrated CGs can be used as logos, tickers, animated movies, clocks, and timers. Etere Radio Live playout features a CG render server, ensuring that operators can program animation, crawl, roll, video, picture, picture sequences, clock, or any interactive CG items that can be included in playout automation.

Optimized to produce high-quality 2D graphics, you can create a wide variety of high-quality broadcast and playout graphics in real-time.

Etere Radio Graphics allow users to prepare the News Ticker for upcoming news coverage or breaking news. This function will enable you to create news, articles, or more with professional rolling text and tickers.

Selected programs, including news-based programs emphasizing viewer interactivity or special events, uses tickers to display messages and reactions from viewers and others that relate to the program from social networking services such as Facebook.

Radio Live's user-friendly interface offers a customizable Coming Next preview, presenting upcoming events as embedded screen crawls or icons. Tailor the preview animation and content placement to your preferences, whether showcasing the next song on a music station or providing details such as artist and release year. Experience seamless integration and unparalleled customization for an elevated broadcasting experience.

Scene Editor

Control the minute details of the stream with the Etere Radio Graphics' Scene Editor. The Scene Editor allows you to determine the transmission layout during a stream. You can change the size and position of the stream, adjust the audio or transition times, or add shapes and effects.

You can make your stream unique. Insert Picture-in-Picture effects, edit song



Radio Live Picture-In-Picture Example

timings and layout changes and more on the same interface with Etere.

You can view the scene editor from the Radio Live interface and view your changes as they go on air through the Live Preview section. Preset the scene parameters and watch your creation go live instantly.

Picture-in-Picture

Etere's Picture-in-Picture function revolutionizes your stream by seamlessly overlaying multiple camera outputs. Elevate your content with a dynamic, multidimensional perspective by layering various camera angles, giving your audience an immersive viewing experience. Whether showcasing the music video, the singer, and the radio DJ simultaneously or any combination thereof, you can display no limits to the number of picture-in-picture effects. In addition, take charge of your visuals with the Scene Editor, allowing you to control the effects and arrange your screens on the fly, ensuring every moment is captivating and engaging.

Experience the dynamic capabilities of the Etere Picture-in-Picture features, seamlessly overlaying multiple camera outputs in your stream. Elevate your audience's viewing experience by layering various camera angles, offering a comprehensive and engaging perspective. Showcase the music video, the singer, and the radio DJ simultaneously on one screen, with limitless possibilities for picture-in-picture effects. Additionally, manage the effects effortlessly through the Scene Editor, allowing you to arrange screens on the fly and deliver captivating content quickly!

Key Features

- ☐ 2D graphics insertion
- ☐ Integrated CG can be used for logos, tickers, animated movies, clocks and timer
- ☐ Graphic generator (unlimited graphics)
- ☐ Graphic layout management (unlimited scenes)
- ☐ Real-time graphic control
- ☐ Supports gif and mov animations
- ☐ Supports multi-layer graphic scenes
- ☐ Text banners, crawling or rolling text, RSS news, text files and dynamic data updates
- ☐ Digital and analog clocks
- ☐ Full frame graphic animation
- ☐ Graphic design preview
- ☐ Scene editing
- ☐ Scene optimisation

