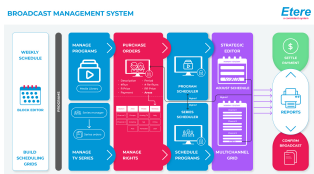
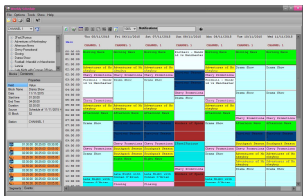


EA1453 ETERE BROADCAST MANAGEMENT SYSTEM (BMS)

A comprehensive and complete scheduling solution provides various program planning tools, customizable views, filters, full rights, media, and content validation.



Broadcast Management System



Key Features

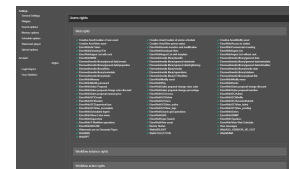
Designed to be scalable, robust, and secure, Etere BMS has evolved to provide the most powerful integrated suite of content management modules available. Etere BMS provides an all-in-one solution with program acquisition planning, content monitoring, and inventory using Etere Media Asset Management.

It integrates Etere Media Asset Management (MAM) metadata, dynamic play-out, post-transmission accounting, rights management, and media workflow processing via Etere Workflow and Delivery Platforms.

BMS stands for Broadcast Management System, it refers to the management of licensing rights process, which is a critical element to overall success in the broadcasting business.

Rights Management

- ☐ Streamlined end-to-end accounting for accounts receivable, including invoicing, credit management, aging, payments, and month-end reporting
- ☐ Central tracking and management of rights consumption and distribution for all acquired and produced content
- ☐ Manage rights for long-form and short-form content across linear and multi-platform services
- ☐ Real-time reporting of rights situation and flexible payment options
- ☐ Detailed rights management system encompassing territory and media diffusion
- ☐ Versatile amortization templates to manage program payment
- ☐ Effective series management to facilitate a detailed diffusion of rights (including episodes generation, asset assignment, and contract creation)
- ☐ Transparent and powerful inventory management
- ☐ Record and process any rights condition or obligation using a flexible and extensible business rules engine



Schedule Structure

- ☐ Powerful wizard to create the schedule grid;
- ☐ Flexible and configurable grid to guide filling procedures;
- ☐ Capability of moving blocks with and without events;
- ☐ Target audience and income on every gridline;
- ☐ Different grid scenarios;
- ☐ Multichannel grid including copy across channel and link across the channel



Asset Management

Using Etere Media Asset Management (MAM) flexible database, the broadcaster can easily locate, maintain and manage their content with an intuitive, flexible, and organized structure. Rights are separately managed to promote a streamlined workflow and to ensure that linked content are not scheduled outside licensing constraints. Rights can be defined by station, media, and territories. The Rights metadata holds details of all rights periods used in your broadcast operation, including exclusions, extensions, and runs available for specific channels and regions, along with any other restrictions.

