

Labour Newspaper Vietnam Choose Etere CensorMX

Vietnam's labour newspaper chose Etere CensorMX to fulfil their media censorship requirements.



Labour Newspaper in Vietnam has selected Etere CensorMX to fulfil their media censorship requirements. The media company is seeking to boost efficiencies and eliminate manual tasks for a more reliable and professional broadcasting. Etere provides next-gen tech solutions with feature-rich platforms that helps broadcasters to achieve new levels of efficiencies across every stage of the broadcasting workflow.

Confidence and Compliance with CensorMX

Central to the project is CensorMX, Etere's market-leading Censorship software that features all the capabilities needed to fulfil censorship compliance laws, even across different countries. CensorMX enables fast edits, replacements and insertions of clips. The user-friendly and centralized dashboard makes it easy for the software to be adapted into organizations of any sizes. CensorMX is scalable to meet your business's evolving needs, from single to hundreds of channels.

Dual-Monitor Support for a More Efficient Operation

With support for a dual-monitor setup, users can manage hi-res previews with a second monitor that displays SensorMX full controls including set mark-in, set mark-out and play/pause. Without switching screens, operators are able to simultaneously perform and preview the full range of censorship controls. These include insert, replace, delete, hide and bleep media, mute audio, cut to mute and cut to black. Operators can apply blur or mosaic insertions at multiple points of application and customize intensity adjustments. The software also features configurable fade and wipe transitions. To add to that, operators can customize alert messages with graphics files upload.

Censorship Time Delay Gives you Maximum Freedom to Broadcast Live Without Mistakes

Time delay is an intentional delay that prevents unacceptable content such as profanity, bloopers and nudity from making it to air. CensorMX integrates time delay features that allow you to perform a delayed transmission while simultaneously ingesting media files. Operators can define a fixed duration for all ingested media to automatically enable a new recording whenever the recording duration has maxed out. The time delay is variable according to the user's needs. It automatically captures ingest videos with a set delay and duration.

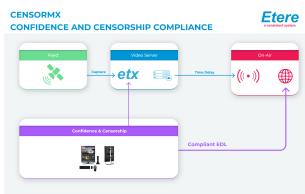
Furthermore, it supports SDI, IP, NDI input and output, providing you maximum flexibility to choose the system that best fits your needs. It is also designed with a distributed architecture that ensures a fault-resilient performance.

Support for Shuttle Pro Contour with Intuitive Controls

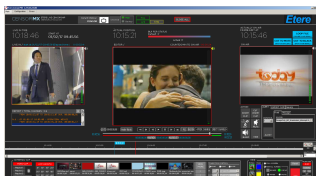
In addition, CensorMX supports the performance of commands remotely using the Shuttle Pro Contour. The Shuttle Pro Contour ergonomic design allows operators to access the main censorship controls using only one hand on the knob. The knob allows the operator to make a swift turn of 360 degrees in any direction, as a result, forward and rewind operations are faster than ever before and it allows frame-by-frame precision. The Shuttle Pro features 13 keys including a jog and shuttle knob.

Furthermore, CensorMX is also a client server application, and it allows a single client to control multiple servers with zero delay technology for preview, making Etere CensorMX a powerful, versatile and cost-effective solution. CensorMX time delay allows operators to perform a delayed transmission while simultaneously ingesting media files.

CensorMX



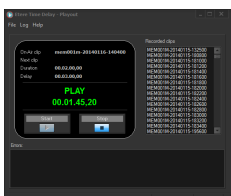
CensorMX Diagram



CensorMX Interface



Censorship Dual Monitor



Time Delay Payout

Key Features

- Customizable transition time and duration of recordings
- Define a fixed duration for all ingested media to automatically enable a new recording whenever the recording duration has maxed out
- Scalable solution that enables the easy expansion of the system with more channels and users, all without a major change in the configuration
- Blur out or cut segments of inappropriate audio/video
- Programmable time delay that allows you to insert or delete without being limited by duration
- Set count down timer and alerts
- Mute and bleep audio
- ETX zero delay technology for preview
- Configure continuous loop in playlist
- One-click button to mute or black sensitive footages during live playback
- Supports a versatile dual-monitor design
- Multiclip insertion
- Bookmark insertion
- Save costs as client server applications allows one single client to control multiple servers
- No waiting time needed to preview content while recording for live and recorded videos
- Supports SD and HD
- Flexibility to use SDI/IP/NDI input and outputs
- Bookmark insertion
- Multiple image format management
- Main and backup configuration
- Distributed architecture for fault-resilient performance
- Set mark-in, markout, pause, play and more
- Detailed reporting with full log of all censorship actions taken for an easy analysis
- Automated compensation for time zone differences

Etere integrates all the censorship features you need in a future-proof solution that is able to evolve and grow with your business needs. With CensorMX, your live streams will run without a hitch and you can ensure a flawless performance at every step of your production.

About Etere

Since its beginnings in 1987, Etere has been preparing users to be ready for the future. Etere is a worldwide provider of broadcast and media software solutions backed by its mark of excellence in system design, flexibility and reliability. Engineered in Singapore, the revolutionary concept of Etere Ecosystem promotes real-time collaborations and enhances operational efficiency across the entire enterprise. Etere Ecosystem software solutions including Media Asset Management, Channel-in-a-Box, Newsroom, Ad Insertion, Airsales, Automation, Broadcast Management System, Censorship, HSM Archive, Logging, OTT/VOD Delivery, Radio-Live, Subtitling and Captioning software are built with an integrative Web and Windows architecture that are customisable to fit perfectly in any system. Etere system is developed by 4 different groups in different countries to ensure reliability and quality. Etere delivers on its service excellence commitment with its dedicated team and a 24/7 worldwide support. Its portfolio of digital technologies and market-proven remote/on-site solutions including consultancy, training, installation and demonstrations are ready to run with your business no matter where you are. Etere enhances your adaptability for the future and empowers you with the software tools to drive your business to greater heights. www.etere.com

