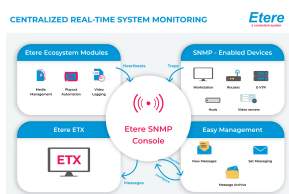


EA1350 ETERE SNMP CONSOLE

Etere SNMP Console is a powerful, fully customizable solution designed to streamline operations, enhance infrastructure performance, and optimize device management, all within a single, intuitive interface.



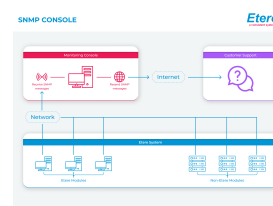
SNMP Monitoring Console

Etere SNMP Console features cutting-edge technology with a simple, intuitive and user-friendly interface that helps to optimize all the infrastructure performance and availability of a system. The SNMP Console controls Etere solutions and all processes/devices on an integrated system that delivers real-time alerts. All processes are monitored by SNMP standard protocol.

Etere provides a standard, flexible, easy-to-use browser interface designed to be highly customizable to facilitate system monitoring; it can detect and recover service downtime automatically. In addition, Etere SNMP Console can receive SNMP messages from other non-Etere applications or devices such as network switches, routers, and firewalls.

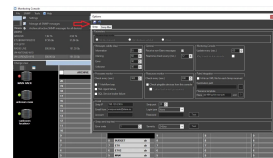
Key Features

- ☐ Easy monitoring and management of all the system
- ☐ Monitors the status of the system and performs diagnostic tests
- ☐ Handshakes Etere applications to check if they are running correctly
- ☐ Controls any SNMP-enabled process
- ☐ Saves the history log of what happened in your system
- ☐ Gives you a view of your machine room to quickly locate every PC
- ☐ Web access console for easy control of the system
- ☐ To improve the monitoring of devices, modules and workflows, all Etere components are automatically subscribed to SNMP Service, and periodic heartbeats are sent via SNMP
- ☐ Etere SNMP Console detects missing heartbeats and sends both a visual alarm and a real-time e-mail notification to the operations department
- ☐ Increased visibility to isolate raised faults
- ☐ Etere SNMP Console is smartly divided across different panels to allow quick monitoring of specific functions
- ☐ Manage and archive all SNMP messages



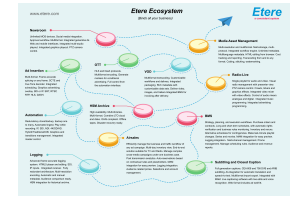
Streamlined Monitoring

- ☐ The console detects an error and captures it immediately
- ☐ Automatically subscribes to SNMP service
- ☐ Notifies users through a red light on the graphical display
- ☐ Recommends the best solution to resolve the issue quickly
- ☐ The failure is stored, and a history log is created
- ☐ The monitoring console is smartly divided across different panels to allow quick monitoring of specific functions
- ☐ Enables global overview of the system
- ☐ Improves monitoring of devices, modules and workflows of all Etere components



Etere Ecosystem Tools

- ☐ **Resource Viewer:** Shows a real-time map of all resources configured in the system. They show their connection status and SNMP messages in real-time
- ☐ **Resources Map:** To view and allocate resources across the ecosystem, enabling a more effective troubleshooting process
- ☐ **Space Monitor:** Visualizes the storage space of all devices/meta devices and allows the operator to view the storage of all devices
- ☐ **Workflow Monitor:** To consult all workflow executed on the station, allowing operators to view and manage all the assets and the related operations
- ☐ **Document Management:** Store all software manuals in a centralized location for a truly integrated and paperless system



Graphical Interface

Etere SNMP Console is a graphic configuration tool that allows the operator to create a clear and intuitive interface through simple rules. Etere SNMP Console includes, as part of a system monitoring software package, an easy-to-use warehouse and advanced reporting capabilities. Create a graphic resource map that reflects the objects part of the system and their interconnectivity.

