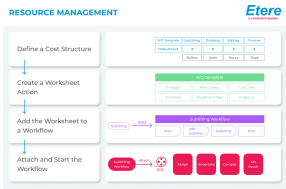


EA1223 ETERE RESOURCE MANAGEMENT

The unique ERP approach to maximize your efficiency with complete integration between video, process and resource management.



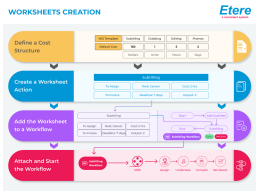
media enterprise resource
planning

Broadcasting is highly demanding, fast moving and competitive. Companies' priorities include:

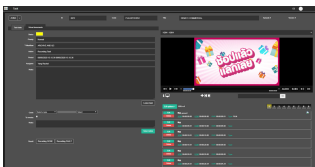
- Maximize profitability from human and material resources
- Increase efficiency of every single plan business process
- Streamline workflows with a real-time departments integration

Broadcasting can be done with ERP or better yet, Etere Ecosystem which is ERP with Media extensions. Etere Ecosystem creates a comprehensive and integrated software environment by linking together broadcast, production and post-production.

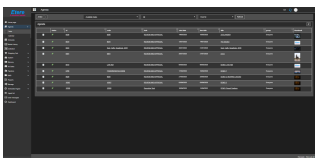
Etere Resource Management is the solution that manages all broadcast related activities. It helps media companies to improve efficiency and profitability, enabling companies to design new optimized structures as and when required.



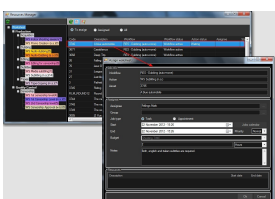
Worksheets creation



Task View



User Agenda



resource manager

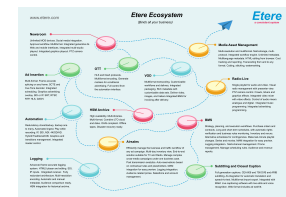
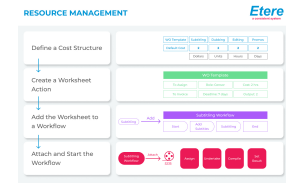
Key Benefits

- ☐ All-in-one framework for all activities
- ☐ Full, simplified and optimized use of resources
- ☐ Shared metadata exchanges between departments
- ☐ Real-time monitoring and assignment of resources
- ☐ Automatic workflow processing of media material
- ☐ Tracking and reporting of financial information
- ☐ Web integration for a fast remote management
- ☐ Seamless integration with Microsoft Outlook

Etere Ecosystem

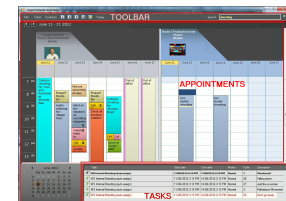
Etere Resource Management manages assets, human resources, systems and financial information to integrate all company business processes into a unified workflow that meets needs and improves operation efficiencies.

It allows full customizations to automate and streamline all processes of a broadcasting company, combining video and human resources into production, post-production, storage and distribution of content.



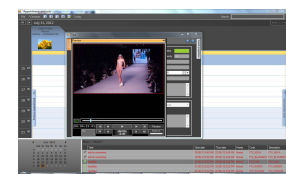
Human Resources

- ☐ Assign the right person for the right job and with the right cost
- ☐ Consult usage, schedule and investment of resources
- ☐ Manage all work orders via workflow
- ☐ Calculate all costs derived from human resources
- ☐ Control the schedule of tasks and appointments



Media Assets

- ☐ Improve subtitling, rights, promo, dubbing, editing, etc
- ☐ Quick planning of resources to be used
- ☐ Tracking, maintenance and management of enterprise equipments
- ☐ Checking of all available working places (editing and ingest rooms, etc.)



Workflow Reliability

Etere Resource Management is able to fully simplify your workflow, enabling a close connection between your departments and a fluid interoperation between them. Smart and efficient workflows can be designed as custom-tailored solutions depending on specific needs. Broadcasters will get a complete integration between IT and video, to share video, metadata, facilities, and even personnel in real-time across the entire system.

