

EA3253 ETERE MASTER CONTROL

Etere Master Control is a future-proof Channel-in-a-Box that enhances your video and graphics capabilities, driving multiple outputs from a single user interface to unlock more monetisation opportunities.



ETERE MASTER CONTROL



etere master control



ETX



Time Delay

Etere is a full-featured Master Control software that empowers media companies and content owners with mixing, branding, video and audio capabilities on an integrated interface. With the implementation of Etere Master Control, you can experience a wide range of benefits.

- Unlock monetization opportunities: Provides unparalleled flexibility to scale and add additional channels easily. This allows broadcasters to be ready to regionalize their content
- Distributed software architecture for a fault-tolerant performance
- Designed as part of the Etere Ecosystem, an interconnected modular system that can manage the end-to-end media workflow
- With COTS PC and server, Etere Master Control integrates all the traditional master control features on a software interface with a smaller footprint and higher efficiency
- Embedded complete transition engine
- Built-in video and audio player
- Audio mixer panel: Multiple audio channels can be assigned, and it includes a preview thumbnail
- ETX time delay: Configure a delayed transmission while concurrently ingesting media files. Prevents blooper and censored content from going on air

Etere solutions are designed with more efficient workflows fully scalable to your organization's needs. Etere has always been an innovator in broadcast, and integrating the traditional Master Control features into **Etere ETX** ensures you get the best returns on your investments. With only a standard off-the-shelf PC and server, you can have all the capabilities of a master control on a single software interface. For customers who already use ETX, implementing an IT-based playout enhanced with master control functionalities will include a simple software upgrade based on an add-on license; no extra hardware is needed.

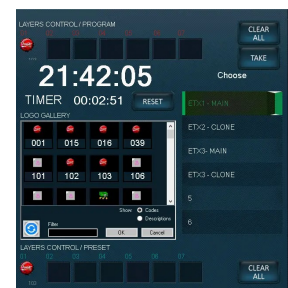


etere master control

Key Features

Etere Master Control is a multi-functional integrated solution with a wide range of features, including:

- ☐ Supports touch-screen display for a fully interactive user experience
- ☐ NDI, IP, 2110 and SDI support
- ☐ Customisable transition effects
- ☐ Preset and quick preview bars for fast switching
- ☐ HTML5 renderer for dynamic graphics, including tickers, animated logos and crawlers, without the need for dedicated hardware
- ☐ Lower-thirds insertion and playback
- ☐ A/B input and program preset out, or program and clean feed out configuration
- ☐ Up to 8 logo layers with multiple sizes per decoder
- ☐ Unlimited number of input channels, including a mix between SDI and IP
- ☐ Can be deployed in the public cloud, private cloud or hybrid configurations
- ☐ DSK input in IP or SDI
- ☐ Performs basic audio mixing functionality for all production signals, including audio level adjustment and auxiliary adjustments
- ☐ SD/HD/UHD formats supported
- ☐ Supports multiple languages, making it easy to repurpose content for regional markets
- ☐ Audio shuffling and control as well as Dolby-e pass-through
- ☐ Multiple PC installations (e.g., for a 2nd EE monitor)



Touch Screen

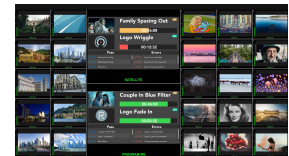
Experience the capabilities of the Etere ETX master panel, where capabilities meet innovation on a sleek touchscreen interface. Seamlessly integrating all standard master control functions, this revolutionary software simplifies your workflow, ensuring swift, error-free operation. Harness the power of our multifunctional software, designed to streamline your tasks with unparalleled efficiency. Whether for scheduling, monitoring, or managing channels, achieve superior performance quickly. The versatility of the Etere software panel extends across multiple PCs, seamlessly adapting to your infrastructure. It can be connected as a secondary monitor to Etere Executive Scheduling.



Embrace an IT-based architecture that liberates your broadcasting capabilities from traditional limitations. With a simplified system design, scale your channels rapidly without the constraints of a conventional setup. Experience accelerated deployment of new channels and entry to new markets, empowering you to reach regional audiences effortlessly. Revolutionize your broadcasting experience with the Etere ETX master panel — where agility meets excellence.

Seamless Integration with Etere ETX-M Multiviewer

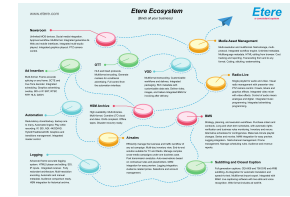
Unlock the full potential of your broadcasting setup with Etere Master Control, which is seamlessly integrated with ETX-M Multiviewer. This ultra-HD multiviewer allows you to monitor unlimited video sources effortlessly through a single, intuitive interface. Now, you can transition between sources with lightning speed, replicating the seamless control of a traditional master control room. Tailor your monitoring experience to perfection with complete layout customization options. Operators can define the number and size of players, creating a workspace that suits their needs perfectly. Mix and match players of varying sizes easily, ensuring optimal visibility and control. Navigate multi-channel environments effortlessly with the embedded next event display counter, providing a preview of what's next on the playlist. Stay ahead of the curve and control your broadcasting schedule precisely. With Etere Master Control and ETX-M Multiviewer, you can elevate your monitoring capabilities to a new efficiency level.



Etere Ecosystem Integration

Etere Master Control can control multiple channels through a unified interface, making it a cost-effective multi-channel solution. It can be quickly and seamlessly integrated with other Etere Ecosystem modules such as:

- ☐ Automation: Automated playout switching
- ☐ Scheduling: Streamlined playlist preview
- ☐ Video Assist: Facilitates emergency playout
- ☐ Ingest: One-click ingest based on predefined profiles
- ☐ Media Asset Management (MAM): End-to-end management of your media library
- ☐ Multiviewer: An integrated software interface for the same monitoring experience as a traditional master control room, with the use of only COTS hardware
- ☐ Router Control: When ETX is unavailable, you can still switch the routers in Master Control with the Etere Router Control utility



Cost Efficiency

Etere substantially reduces capital expenditure and operating costs for television facilities since it replaces proprietary broadcast playout and processing hardware with standard IT servers and Etere software. Leverage the benefits of Commercial Off-The-Shelf (COTS) hardware, reducing your footprint and operational expenditure. With Etere, you can unlock unparalleled efficiency and cost-efficiency without compromising quality or performance.

