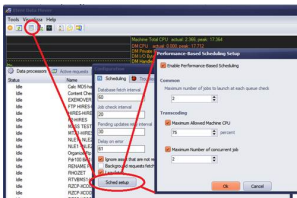
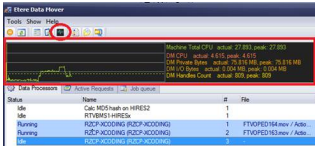


# ETERE ENHANCES THE LOAD BALANCING

Etere 23.2 has an advanced load balancing system to help you to squeeze the maximum from your system.



monitor panel



scheduling configuration

Etere 23.2 includes a real-time monitoring of CPU and resources of each server, moreover it is able to distribute the processes with the purpose to maximize the resources use and avoid servers overwhelming. The list of the jobs are equally distributed using the resource pool designed during workflow generation. The load balancing is available for all the data management functions of Etere including:

- data moving
- transcoding
- conforming
- enhanced QC
- UDP wan transfer

The Etere load balancing performs even if we use third party components. It is the only multi vendor load balancing system. The empowered load balancing will be available free of charge to all the Etere customers that have an active support contract.