

EA1439 Yandex Speech Recognition

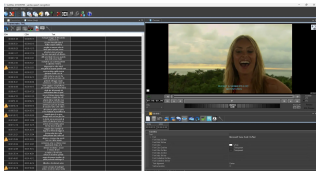
Etere supports Yandex Speechkit for a end-to-end connected experience, allowing broadcasters and post-producers to add speech-to-text directly into Etere workflows for a faster delivery within the Etere Ecosystem.



Etere logo



Yandex Logo



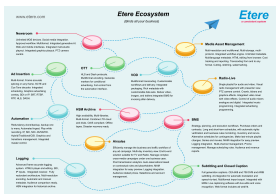
Yandex Speech Recognition

The integration supports real-time and batch speech recognition, automatic language detection, and natural text-to-speech to help media businesses automate voice interactions and transcribe audio with high accuracy.

Yandex SpeechKit supported languages selection includes **Russian, Kazakh, Dutch, Uzbek, English, Turkish, German, Spanish, Swedish, French, Finnish, Hebrew, Italian, Polish, and Portuguese.**

Key Features

- **Capture subtitles:** Export and create subtitles with the selected language
- **Flexible recognition modes:** Creates subtitles for recorded videos and audio
- **Transcribes in real-time:** Suitable for live-streams
- **Automatic language detection:** Identifies the speaker's language without manual configuration
- **Natural speech synthesis:** Converts text into speech using standard voices and customizable brand voices for consistent brand identity
- **Mark vocals:** Mark the stressed vowels to clarify the correct pronunciation of words
- **Phonemes:** Mark the correct pronunciation of words using phonemes
- **Add emphasis on selected words:** Emphasize essential or important words for a more dynamic speech
- **Text normalization:** Configure to recognise and present date and time in numerical format or convert numbers from text to digits
- **Customizable speaker's speech rate:** Configure the speed of the speaker's speech to suit the context
- **Customizable voice pitch for the speaker:** Configure the speaker's voice pitch



Etere Ecosystem