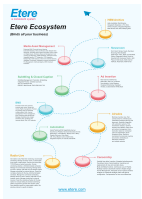


## Company Profile: Etere

Founded in 1987, Etere is amongst the worldwide leaders in Media Asset Management and Channel in a Box software solutions for broadcasters and media enterprises. Etere is a trusted provider of enterprise solutions backed by its mark of excellence in system design, flexibility and reliability. Etere is proud to celebrate its anniversary for over 30 years in business.



Etere logo



Etere Ecosystem

Etere's unique Etere Ecosystem end-to-end software solutions are used by many of the world's leading Media Enterprises to power their media asset planning and enterprise resources management. With customers all over the globe, Etere is headquartered in Singapore, with a specialized 24/7 worldwide support centre.

With the expertise backed by more than three decades of experience, we strive to develop an in-depth understanding of your requirements to help you to attain results that is tailored for your success. Revolutionary concept of **Etere Ecosystem** offers an end-to-end software solution that promotes real-time collaborations across the entire enterprise and ensures optimal performance at every step of the workflow. We may not have the best specifications in every category but with Etere, you will get the measurable success, insights and results that you can trust.

## About Us

### Company

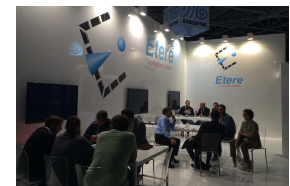
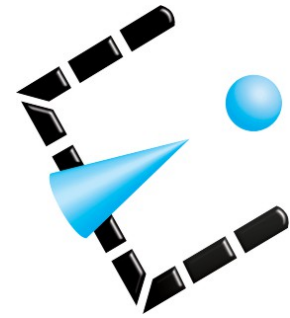
- ☐ Consistent leadership since 1987, with more than three decades of success and innovation
- ☐ The company was formally known as SIS (Societa Italiana Software). Etere provides world class enterprise solutions for Media Asset Management, project management and change management for broadcast and media enterprises
- ☐ Award-winning company backed by industry recognition
- ☐ The only company to offer end-to-end workflow solutions for media enterprises
- ☐ Revolutionary concept of **Etere Ecosystem** promotes collaborations and real-time interaction across the entire enterprise, ensures optimal performance at every step of the workflow
- ☐ Etere team of engineers represents a unique cross section of broadcast & IT experiences
- ☐ Headquarters in Singapore and with a specialized development centre in Italy
- ☐ Dedicated testers and engineers to ensure Etere mark of quality, consistency & reliability
- ☐ Product leadership through architectural excellence
- ☐ Best application support with dedicated 24/7 worldwide support
- ☐ Best flexibility & fully scalable solutions that evolve with your company and amplify returns
- ☐ Forward-thinking and an industry innovator

### Distribution Networks

- ☐ Europe
- ☐ Middle East
- ☐ Asia Pacific
- ☐ South America

### Company Mission

- ☐ Etere is the Italian word for Luminiferous aether, the wave-based light that has the unique ability to penetrate empty spaces, an exceptional property of waves. Similarly, Etere represents the commitment to deliver and achieve exceptional excellence backed by its mark of quality, consistency and reliability
- ☐ Expand with our valued team of partners and distributors from all around the world
- ☐ Develop an in-depth understanding of our customers' requirements to achieve success that is tailored for their business needs
- ☐ Anticipate and understand the trends and needs of our market
- ☐ Reinforcing our reputation for driving innovation and forward-thinking solutions
- ☐ Deliver excellent customer service with our dedicated 24/7 support
- ☐ Advance with our valued employees through professional training and development



## Road Map

- ☐ Bring to the world a portfolio of quality software solutions that anticipate the market needs
- ☐ Create value and make a difference
- ☐ Grow with our team. Advance their knowledge and professional development
- ☐ Develop and encourage a strong network of partners and distributors
- ☐ Listen, observe and develop an in-depth understanding of our customers' needs
- ☐ Be insatiably curious with a focus on the needs of broadcast and media enterprises

Take the first step to achieve the results-driven success that you want. Talk to us at **info@etere.com**.

