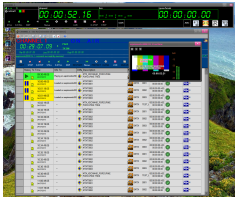


Etere lets you harness the power of IP with Etere ETX

The most advanced IT based solution, tightly integrated and cost efficient video management system on the market that is a complete channel in a box with full IP in and out capabilities.



ETX

Etere is pleased to announce the launch of Etere ETX today. Etere ETX is the most advanced IT based solution, tightly integrated and cost-efficient video management system on the market ,a complete **channel in a box** with full IP in and out capabilities.

Etere ETX is an ingest/playout engine that gives you professional video technology with the reliability and efficiency of Etere to ensure support for all major essences and wrappers in the broadcast industry. Etere ETX is able to also perform IP in and IP out multiple frame rate , and at the same time allows SDI input and output, multiple layer of graphics and 3D graphics animation.



Etere logo

KEY FEATURES

- IP out multiple frame rate
- SDI output supporting the following cards: Blackmagic, Deltacast
- Supports multiple layer of graphics, squeeze and 3D graphic animation
- Ability to produce a proxy version in WMV format during ingest
- Graphics engine is included to allow overlay of static/animated logos and crawlers on eight layers
- Offered as software driver comprising free updates just like regular Etere products
- Support for all major wrappers (AVI, MXF, GXF, QT)
- All compression schemas (MPG2, DV25,HDV, DVCpro,DVCpro50,DVCproHD, IMX30/40/50, XDcam-EX, XDCam-HD,AVC-Intra AVC-HD, H264, WMV, ProRes)



Etere ETX

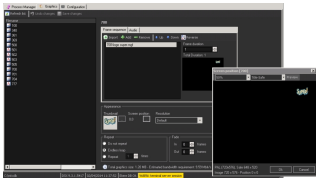
FULL IP CAPABILITIES

- Able to perform IP in and IP out, with multiple frame rate
- Full IP support for both HD and SD videos
- Mpeg2 or H264 compression schema
- Independent IP out services

MULTICHANNEL AND HIGH FAULT TOLERANCE

Etere ETX has the ability to simultaneously manage various different ingest/playout channels, making it a versatile multi-channel solution that is able to offer video acquisition, real-time compression and network transmission with full support for different video codecs between channels.

Etere ETX is designed to work at a high fault-tolerance level to avoid single points of failure due to the distribution of video data over various ingest and playout nodes which cooperatively manages all video data. ETX allows the introduction of easily integrated ingest/playout devices at a lower cost, offering a cutting-edge product with an outstanding performance complete with full support included.



ETX