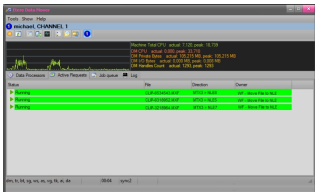


## 4K for ETERE ETX

ETX free upgrade to play 4K video. To match the demand of the broadcaster ETERE offers free 4K upgrade to ETX.



ETX

Etere ETX is the most advanced, tightly integrated and cost-efficient video management system on the market, completely based on IT technology. It is a complete channel in a box with full IP (in and out) capabilities, enabling you to drive the most popular 4K/HD/SD digital video/audio/graphics platforms without using middle-ware or proprietary hardware.

ETX is also a fully digital ingest/playout engine that gives you professional video technology with the reliability and efficiency of Etere to ensure support for all major essences and wrappers in the broadcast industry. Etere ETX is able to IP in and out multiple frame, and also supports SDI output, multiple layer of graphics and 3D graphics animation.

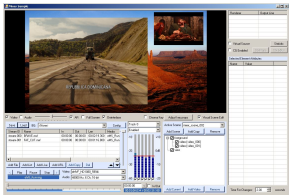


ETX

NOW ETX play and ingest 4K video, without additional licences. Etere offer this free upgrade to all the customers that use or ordered ETX. ETX also have a Up and Down conversion to mix different resolutions content on the same playlist.

Those are the main features of ETX

- IP out multiple frame rate
- SDI output supporting the following cards: [Blackmagic](#), [Matrox DSX](#), [DSXLE3](#) and [XMIO2](#), [Deltacast SDI and IP video cards](#)
- Supports multiple layer of graphics, squeeze, 3DMAX animation
- Ability to produce during ingest a proxy version in WMV format
- Included graphics engine allows overlay of static/animated logos and crawlers on eight layers
- Offered as software driver comprising free updates as regular Etere products
- Support for all major wrappers (AVI, MXF, GXF, QT)
- All compression schemas (MPG2, DV25, HDV, DVCpro, DVCpro50, DVCproHD, IMX30/40/50, XDCam-EX, XDCam-HD, AVC-Intra AVC-HD, H264, WMV, ProRes)



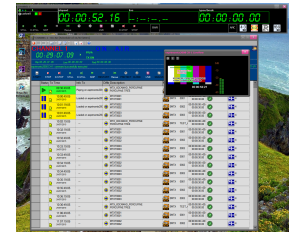
ETX



ETX

## UNLEASH YOUR IDEAS

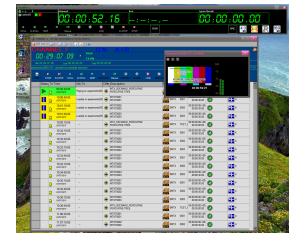
Etere ETX is all you need to rapidly launch, expand, sustain and protect your channels. Etere ETX works along with efficient file-based broadcast workflows for capturing HD/SD video, from either scheduled or manual content feeds, automatically and simultaneously generating proxy videos, and delivering stored video embracing branding graphics, animations and text crawls.



ETX gives you all the tools that you need to brand your channels the way you envision it to be and more, while at the same time, it makes your workflow infinitely smoother with its efficiency and ease of use.

## FAULT TOLERANCE

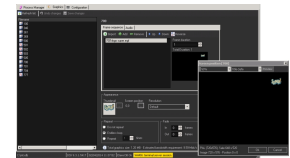
Etere ETX is designed to work with a high fault-tolerance level to avoid single points of failure due to the distribution of video data over various ingest and playout nodes which cooperatively manages all video data. ETX allows working with different capacity redundancies to maintain outstanding service reliability.



ETX also lets you introduce easily integrated ingest/playout devices at a lower cost, so ETX enables you to have the widest range of choice with regards to devices so you can meet your needs perfectly. Not only is ETX a cutting-edge product with an outstanding performance, complete support from Etere is included. With ETX, broadcasters gain an unbeatable relation between quality and price.

## MERP INTEGRATION

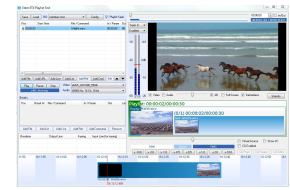
As part of the MERP Cloud framework, Etere ETX has a distributed architecture that enables it to take advantage of ultimate storage and video hardware to create a high-performance digital media solution able to be used to capture/playout servers, NLE systems, graphics/production servers, automation and master control units and more.



The distribution of contents from the different ETX engines is controlled by Etere Media Manager, the application that delivers the correct video to the correct place in the correct time. Etere ETX video file transfer capabilities is one of the fastest in the market since its distributed design permits it to avoid performance bottlenecks.

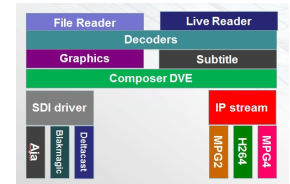
## KEY FEATURES

- IP out multiple frame rate
- SDI output supporting the following cards: Blackmagic and Matrox
- Supports multiple layer of graphics, squeeze, 3D graphic animation
- Ability to produce during ingest a proxy version in WMV format
- Included graphics engine allows overlay of static/animated logos and crawlers on eight layers
- Offered as software driver comprising free updates as regular Etere products
- Support for all major wrappers (AVI, MXF, GXF, QT)
- All compression schemas (MPG2, DV25, HDV, DVCpro, DVCpro50, DVCproHD, IMX30/40/50, XDcam-EX, XDcam-HD, AVC-Intra AVC-HD, H264, WMV, ProRes)



## FULL IP CAPABILITIES

- Able to perform IP in and IP out, with multiple frame rate
- Full IP support for both HD and SD videos
- Mpeg2 or H264 compression schema
- Independent IP out services



## 4K ENABLED BY DEFAULT

Etere ETX support any resolution with full up and down conversion. You can put in the playlist any video SD/HD/4K and select your output in SDI HD or 4K. SDI and IP can have different resolutions for the best result.

