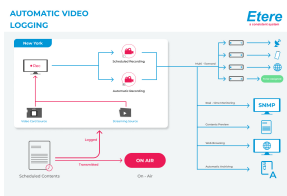
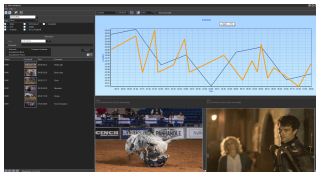


EA1279 ETERE MEMORY

Get more out of your compliance logger software with Etere Memory which equips you with the features to comply with regulatory requirements as well as to analyse audience data, insert logos/timcodes, view/edit recordings, log clips for OTT, VOD and social media delivery.



Etere Memory Audio
Logging



etere memory

Etere Memory provides broadcasters with a reliable compliance logger that records and stores all transmitted video and audio in a low-resolution format (MPEG4/WMV), enabling operators to fulfil all broadcast recording laws. It also allows content creators to re-purpose their content cost-effectively and efficiently. Etere Memory provides the tools to record, create, edit clips, add metadata, transcode and distribute content for VOD, OTT and social media. Etere Memory is a simple and cost-effective software that runs on any Windows computer and enables the recording and viewing of clips simultaneously with only a few seconds delay. Etere supports commonly used input cards, including Blackmagic and IP input, and IP with TS, AIMS, and ASPEN. Streaming out from Etere Memory is possible with HTTP, UDP, RTSP & RTMP streaming to the Flash and Wowza Media servers. Etere Memory also supports the H264 format (MPEG-4), developed for high-definition systems such as HDTV, Blu-ray, and HD DVD to produce better quality at a lower file size. Etere Memory comes with an Etere player for Windows and an HTML5 player for the web to provide an exceptional viewing experience.

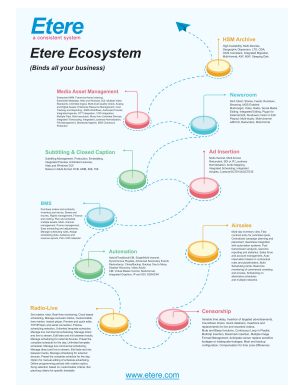
Key Features

- ☐ HTML5 player for web/desktop browsing and H265 (MPEG-4) compatibility
- ☐ Compliance logger that complies with all the TV regulatory requirements
- ☐ Manage content streaming remotely
- ☐ Supports clipping for OTT, VOD and social media
- ☐ HTTP, UDP, RTSP & RTMP streaming to Wowza Media Server
- ☐ Supports analogue and digital video capture boards
- ☐ Data protection and advanced redundancy to record files on remote servers
- ☐ Unlimited and simultaneous clients/recordings, multiple viewings and editing
- ☐ Embedded time codes on recorded videos
- ☐ Automatic detection and SNMP notifications for black and frozen video issues
- ☐ Metadata marking to identify and search key video parts
- ☐ Audience data insertion into logged video files and competitors' record checks
- ☐ Supports insertion of logos and timecodes, supports annotation on video
- ☐ Includes **Etere HSM** archiving at no additional costs
- ☐ Integration with loudness check and preview with Etere Audience



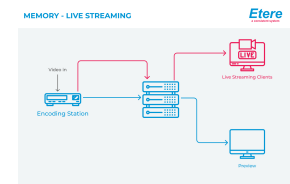
Etere Ecosystem Integration

- ☐ **Etere Scheduling:** Preview the logged transmission of scheduled events
- ☐ **Etere Media Asset Management:** View and add metadata to logged videos
- ☐ **Etere Broadcast Management System (BMS)** and **Etere Airsales:** Enhances logged videos with audience data and reports
- ☐ **Etere Web:** Consults logged files remotely from any browser
- ☐ **Etere HSM:** Archives and retrieves logged files on long-term tape libraries
- ☐ **Etere Media Management:** Stores logged files without any other license
- ☐ **Etere Loudness Control:** Enables loudness control threshold configuration and preview as well as simultaneous and multiple loudness control check
- ☐ **Etere Logger:** Addition, search, index and capture of metadata



Unlimited Live Video Streaming

Etere Memory empowers users to stream and produce videos in HTTP, UDP, RTSP and RTMP formats like a pro from a standard PC. Seamless integration with Etere Ingest manages the complete workflow from ingestion to playout. From live events, sports to even news feeds, Etere manages live streams with the inclusive HTML5 player. It supports all industry standards including IP with TS, AIMS and ASPEN. With its full compatibility with file formats including H264 and WMV as well as compatibility with video input cards including Blackmagic, Etere has got all your needs covered. Stream your content to OTT and social media with Etere, even for partial restores and retrievals. To quickly identify key video parts, content creators are able to insert metadata markings. The intuitive software is also a cut above the rest with advanced features including unlimited number of recordings/viewings, detection of audio/video issues, SNMP alerts, embedding of watermark, web browser, loudness control and play while recording capabilities.



WEB and Desktop Browsing

From desktop to web, Etere Memory enables users to search in real-time, preview, cut, record and stream unlimited video files and sub-clips. The application's intuitive GUI provides information about the current recorded file size and disk storage space occupied by logged files. Etere enables the insertion of metadata at specific time codes and it sends retrieved videos to specialized departments. Users are also able to access audience composition data in real-time, even on the web interface. With Etere Memory's powerful capabilities, recording, preview and streaming is always reliable, fast and easy.

