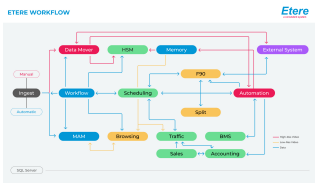
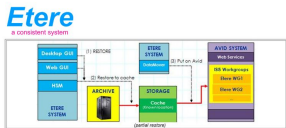


GEOGRAPHIC REDUNDANT ARCHIVE

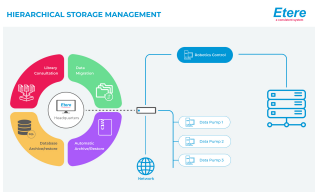
Etere replicates data between more than one geographically defined sites to allow applications to switch from one site to another in case of the catastrophic failure of one. Etere incorporates best practices solutions and future-proofs your assets.



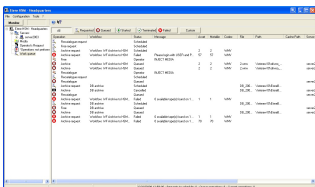
Etere Workflow



Workflow for Partial Retrieve



HSM Diagram



hsm

Take the first step to achieve the results-driven success that you want. We can help you to attain results that are tailored for your success. Talk to us at info@etere.com

Etere Media Management

Etere Media Management is a highly effective digital content management solution, specifically designed to streamline the process of ingest, indexing, storage and retrieval of digital assets.

Etere Media Management is a cost effective solution empowered with:

- Multi Device Connection
- System Fault Tolerant
- Libraries Management
- Low-res Video Transcoding
- Proactive Cache Management
- Scheduling/MAM Prefetch
- Newsroom Integration

Etere T-Workflow

Etere Workflow is an essential part of the broadcasting process not only because it users to set broadcasting management rules but principally because it expresses how modules interact to perform the broadcasting process, making easy to the operator the understanding of how the system works. Etere Workflow establishes a simple, fully personalized and reliable way to create or modify distinct broadcasting procedures.

Etere Workflow gives full control to the station, allowing them to customize their system to make it match their requirements 100%, including new operations insertions, operations sequence modifying, etc. Etere offers an integrated and professional workflow management solution that respects and complements the underlying broadcasting system, optimizes systems management, reduces operating costs and facilitates overall process management.

Etere Workflow includes the following key capabilities:

- Prepares content for multiple screens delivery, transcodes media and converts metadata for broadcast, internet, mobile or any other platforms.
- Clear definition of each complex step of the broadcasting process
- Visual paperless representation of each step mapped out
- Set of mandatory instructions and authorizations
- Complete log of all steps involved in a certain operation
- Simultaneous execution of multiple independent actions

Etere HSM

Etere HSM is a tool to move and optimize video contents between different media. The data movement policy is applied to get the best compromise between cost and speed. Etere HSM manages all archives in a single integrated environment, supporting a mix of proprietary and/or industry file systems under a unified cockpit that provides all information on archives located on-site and across multiple geographic locations. This solution lets our customers choose from a wide range of archive storage technologies. Customers can create an archive copy of all critical data on performance storage and a second copy on secure storage. Optionally, a disaster recovery copy can be stored offsite. Etere HSM uses Windows drivers to

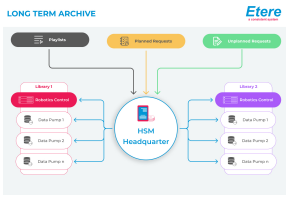


Diagram of Long Term Archive



Optical Disc Archive

ODA Sony



Sony Electronics

interface with hardware; any windows-compatible library or tape drive can be used.

Etere HSM includes the following key capabilities:

- Archive high and low resolution copies as well as Master and TX copies
- Store all metadata along with the video for an increased protection
- Carry out the backup copy of the database
- Auto-update the library status of files to prevent last minute issues
- Optimize space according to cost and reduce expensive media
- User-friendly interface combined with display of tape content, even for offline tapes
- Capable of driving multiple copies of the tapes, up to three copies that can be held in the library or off the shelf for increased security
- Archiving of all the video files and management of both high and proxy resolution with increased protection
- Enables metadata integration when a clip is archived in the Tape Library
- Long term archive management; the tape library is used to significantly expand the system capacity to allow permanent storage of data
- MS Windows based and is able to interface with all library or tape drives that are MS Windows compatible
- A single view of a multi-library environment; it is able to manage different libraries located in different places as a single logical entity

Etere Partial Retrieve

Automate your workflow processes to improve workflow efficiency with Etere. Etere is compatible with Avid partial restore which allows partial retrieval of assets stored in Etere systems.

Etere Partial Retrieve includes the following key capabilities

- Restore partial segments of media files related to assets stored in Etere
- Supervisor rights can be configured for approval process
- Allows creating a separate file for all suitable segments contained into a certain cue sheet
- A separate file will be generated for each segment, featuring only the portion of video related to the partially retrieved segment
- Every partially retrieved file will be hold into a new asset created with the following data: Code, description, type, post-workflow, and file
- Can be launched from Etere Media Library module via desktop or on Etere web
- Parts of large files can be retrieved in any formats including MXF Mpeg2, MXF DV, MXF DVCPRO
- Email notification is sent to administrators with the configured accounts
- Ingested asset can be searched in the Interplay database

Etere for ODA Library, Sony Optical Disc Archive

Etere MAM simplifies the process of content management by streamlining the digital workflow, bringing media to the market faster and in multiple formats, ensuring an exceptional and frame accurate content. Tight integration with the Sony Optical Disc Archive platform expands the range of storage technologies supported by Etere solutions and enables Etere's customers full flexibility to leverage on Sony's capabilities. Etere supports multiple ODA libraries and a mixed environment with LTO tapes and ODA, allowing you to use the best of both systems.

Tight integration with the Sony Optical Disc Archive platform expands the range of storage technologies supported by Etere and enables Etere customers full flexibility to leverage on collaborative workflows.

Etere SNMP Console

Etere provides a common, flexible and easy-to-use browser interface, designed to be highly customizable to facilitate system monitoring, it's able to detect and recover potential problems automatically. Etere SNMP Console is capable to receive SNMP messages sent by other non-Etere applications or devices such as network switches, routers, and firewalls.

Etere DiskLibrary

Etere DiskLibrary is a next-generation hybrid tape and disk archive software for long-term storage software solution that manages archives based on sleeping disks. It is a cost-efficient alternative to LTO and ODA libraries. It allows to mix any archive enclosure as well as different disk technologies. It features greater flexibility and interoperability as it allows the user to use any archive enclosure instead of a dedicated type.

For long-term benefits, Etere DiskLibrary provides easy maintenance and upgrades. The ultra fast retrieval time of Etere DiskLibrary fits better in Newsroom application and MAM, where data needs to be retrieved as fast as it is possible. The easily expandable and small footprint fits in every system.

About Etere

Since its beginnings in 1987, Etere has been preparing users to be ready for the future. Etere is a worldwide provider of broadcast and media software solutions backed by its mark of excellence in system design, flexibility and reliability. Engineered in Singapore, the revolutionary concept of Etere Ecosystem promotes real-time collaborations and enhances operational efficiency across the entire enterprise. Etere Ecosystem software solutions including Media Asset Management, Channel-in-a-Box, Newsroom, Ad Insertion, Airsales, Automation, Broadcast Management System, Censorship, HSM Archive, Logging, OTT/VOD Delivery, Radio-Live, Subtitling and Captioning software are built with an integrative Web and Windows architecture that are customisable to fit perfectly in any system. Etere system is developed by 4 different groups in different countries to ensure reliability and quality. Etere delivers on its service excellence commitment with its dedicated team and a 24/7 worldwide support. Its portfolio of digital technologies and market-proven remote/on-site solutions including consultancy, training, installation and demonstrations are ready to run with your business no matter where you are. Etere enhances your adaptability for the future and empowers you with the software tools to drive your business to greater heights. www.etere.com

