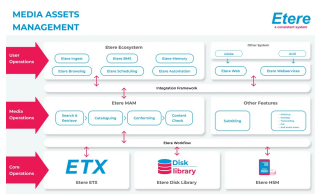


EA1224 BASIC MAM

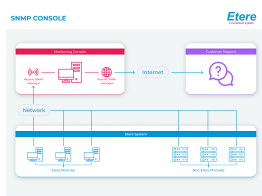
Etere Basic MAM is a cost-effective, entry-level Media Asset Management (MAM) solution designed to streamline asset organization. Integrated seamlessly into every Etere system, it provides essential tools for efficient media management, ensuring a smooth and organized workflow.



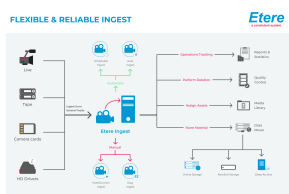
Etere logo



Media Asset Management



Monitoring Console



Etere Ingest

Etere Media Asset Management

Etere MAM is a powerful and comprehensive digital content management solution designed to optimize every stage of the asset lifecycle. From ingesting and indexing to storage and retrieval, it ensures seamless management of digital assets while maximizing their value. With its centralized approach to content and metadata organization, Etere MAM enhances operational efficiency, accelerates workflows, and boosts return on investment. By streamlining digital processes, it enables faster time-to-market in multiple formats while maintaining exceptional quality and frame accuracy.

Etere SNMP Console

Etere SNMP Console is a leading-edge technology with a simple, intuitive, and user-friendly interface that helps optimize infrastructure performance and system availability. The SNMP Console provides a smarter solution since it manages Etere solutions and all processes/devices involved in the system.

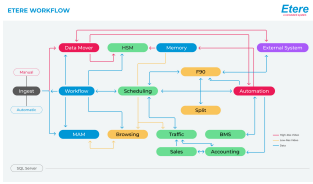
- Easy monitoring and management of all the system
- Monitors the status of the system and performs diagnostics
- Handshakes Etere applications to check if they are running correctly
- Controls any SNMP-enabled process
- Saves the history log of what happened in your system
- Gives you a view of your machine room to quickly locate every PC
- Web access console for easy control of the system
- To improve monitoring of devices, modules and workflows, all Etere components are automatically subscribed to SNMP Service, periodic heartbeats are sent via SNMP
- Etere SNMP Console detects missing heartbeats and sends both a visual alarm and a real-time e-mail notification to the operations department
- Increased visibility to isolate raised faults
- Etere SNMP Console is smartly divided across different panels to allow quick monitoring of specific functions
- Manage and archive all SNMP messages

Etere Ingest

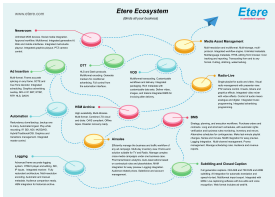
Etere Ingest is an innovative and robust solution designed to streamline the ingest process for broadcasting and media companies. With real-time SD/HD media capture capabilities, it seamlessly retrieves content from virtually any video source, including broadcast streams, FTP, and IP streams. As an all-in-one package, Etere Ingest simplifies media acquisition by integrating feeds into cloud storage while enabling customizable workflows. Its comprehensive, multi-channel, multi-format, and multi-resolution recording system ensures unparalleled flexibility and efficiency for professional media management.

Etere Resource Management

Etere Resources Management is a comprehensive solution designed to streamline all broadcast-related activities. With its powerful yet intuitive interface, it empowers media companies to enhance efficiency, boost profitability, and seamlessly adapt to evolving industry demands. Whether optimizing existing workflows or designing new structures, Etere delivers the flexibility and innovation needed for success.



Etere Workflow



Etere Cloud MERP

Etere Tape Loan

Etere Tape Loan is an optional module that provides comprehensive and user-friendly management of tape loans, including a fast loan and return feature using barcode scanning, an on-air library, and loan receipt printouts. Tapes managed by this module are stored in the Etere database for reliable management from their initial loan until their return, allowing operators to create, search, view, or modify all tape loans performed by the station.

Etere Transcoder

Etere Transcoder is a cutting-edge encoding solution designed for seamless file-based workflows. This powerful transcoder supports a comprehensive range of format conversions essential for production, post-production, broadcasting, and distribution, ensuring efficiency and reliability across media environments.

Etere Player

Etere Player revolutionizes media playback with unparalleled efficiency and innovation. Designed to meet the evolving challenges of broadcast, production, and content distribution, it delivers a **seamless and powerful browsing experience**. With cutting-edge features tailored for modern media workflows, Etere Player empowers users to maximize their playback capabilities, ensuring smooth, intuitive operations that elevate content management to the next level.

Etere T-Workflow

Etere T-Workflow is an essential part of the broadcasting process not only because it allows the setting of broadcasting management rules but principally because it expresses how modules interact to perform the broadcasting process, making it easy for the operator to understand how the system works. Etere T-Workflow establishes a simple, fully personalized, reliable way to create or modify distinct broadcasting procedures.

- Prepares content for multiple screen delivery, transcodes media and converts metadata for broadcast, internet, mobile or any other platforms
- Clear definition of each complex step of the broadcasting process
- Visual paperless representation of each step mapped out
- Set of mandatory instructions and authorizations
- Complete log of all steps involved in a certain operation
- Simultaneous execution of multiple independent actions

About Etere

Since its beginnings in 1987, Etere has been preparing users to be ready for the future. Etere is a worldwide provider of broadcast and media software solutions backed by its mark of excellence in system design, flexibility and reliability. Engineered in Singapore, the revolutionary concept of Etere Ecosystem promotes real-time collaborations and enhances operational efficiency across the entire enterprise. Etere Ecosystem software solutions including Media Asset Management, Channel-in-a-Box, Newsroom, Ad Insertion, Airsales, Automation, Broadcast Management System, Censorship, HSM Archive, Logging, OTT/VOD Delivery, Radio-Live, Subtitling and Captioning software are built with an integrative Web and Windows architecture that are customisable to fit perfectly in any system. Etere system is developed by 4 different groups in different countries to ensure reliability and quality. Etere delivers on its service excellence commitment with its dedicated team and a 24/7 worldwide support. Its portfolio of digital technologies and market-proven remote/on-site solutions including consultancy, training, installation and demonstrations are ready to run with your business no matter where you are. Etere enhances your adaptability for the future and empowers you with the software tools to drive your business to greater heights. www.etere.com