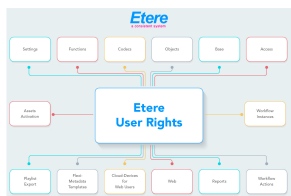


## EA1224 ETERE USER RIGHTS

Etere Enterprise structure defines user permissions in a secure, reliable and efficient way.



Etere User Rights Diagram

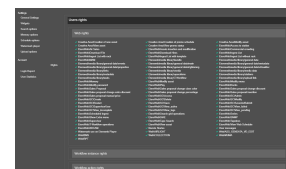
**Etere User Rights** manages your profile in Etere system and connects to active directory to retrieve authorizations and properties. Etere Rights system includes more than 200 options; you can create a perfect profile of every user, decide who can use a specific Etere solution or only some functions of it, or indicate which data the user is allowed to see or modify.

Using Etere User Rights, system's administrator can efficiently add or remove rights through a secure, centralized and user-friendly interface to all users, computers, workgroups, and applications forming part of the system. Etere will allow to strictly controlling user's access rights to data as a security best-practice that will help to reduce the risk of data breaches due to overly accessible data.

### Key Features

**Etere User Rights** gives the ability to assign rights regarding an Etere solution in a different way, through user identifications, using user roles, defining specific rights per TV channel (e.g. in a multichannel station) or workgroups.

- ☐ A complete rights management system
- ☐ Each user can be profiled, and can have different rights according to station and functions
- ☐ User can be grouped for an easy management
- ☐ If a user is member of multiple groups, the user can have more than one set of rights
- ☐ Groups and users can be Active Directory integrated
- ☐ Workgroup based: Etere User Rights manages a set of specific access and ability permissions assignable to customizable groups, in this way, users can then be either assigned to specific groups or removed from them
- ☐ Preset workflows: Assign workflows to security groups to enhance the security on sensitive operations such as web content delivery, these workflows can be set for specific users to be performed for specific operations



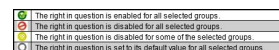
## View and Modify Rights

Etere allows system administrators (i.e. users with supervisor capabilities) to view and modify the rights:

- ☐ Allowed: Set the selected right(s) as allowed
- ☐ Denied: Use it to disable the selected right(s), that is, set is as denied
- ☐ Default: Set the selected right(s) to its default value
- ☐ Change default rule: Specify if the right(s) in question should be either allowed or banned by default

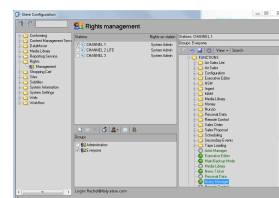
Rights statuses:

- ☐ The right in question is enabled for all selected groups
- ☐ The right in question is disabled for all selected groups
- ☐ The right in question is enabled only for some of the selected groups
- ☐ The right in question is set to its default value for all selected groups



## Modular system

- ☐ Modular assignment: Etere allows to enable either an entire module or a part of it (only some specific features) for specific user groups, thus allowing a custom assignment of rights that truly reflects the corporative organization
- ☐ Stored objects: Etere control access to system-wide resources on a computer and can override the permissions that are set on particular objects



## Enhanced Security

- ☐ Corporate identities: Rights can be assigned to either group accounts or individual user accounts; to authorize users for specific actions
- ☐ Information protection: Dictate who is authorized to log on to a TV station computer and what kind of operation the user can perform
- ☐ Authentication requests: Unauthorized users can apply for a temporary permission (e.g. download a file, view an asset, etc.)

