

Etere MTX

An innovative cost effective solution to combine Etere integration with the ultimate Matrox video technology. No third party middleware is necessary.



MTX workflow

Etere MTX is the most advanced, tightly integrated and cost-efficient video management system on the market, completely based on latest Matrox technology. It is offered by Etere to drive the most popular HD/SD Matrox digital video/audio/graphics platforms without using middleware's.

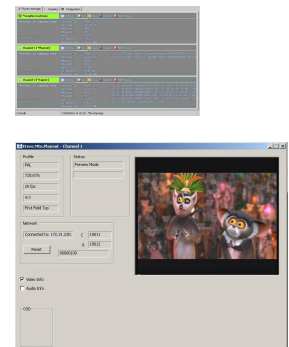
It combines the professional video technology of Matrox with the reliability and efficiency of Etere.

With Etere MTX you will be able to capture HD or SD video plus video proxy at the same time. Etere MTX supports a wide range of essences and wrappers to be compatible with any other devices of the broadcast market.

Etere MTX is a fully digital ingest/playout engine able to leverage the 100% of Matrox video technology, it works along with efficient file-based broadcast workflows for capturing either scheduled or manual video contents from any feed, and delivering them automatically including brand logos, animations and text crawls.

PRODUCT FEATURES

- It is based on new Matrox DSX technology, supporting all models including DSX, X.MIO and X.MIO2
- All compression schemas MPG2, DV25, HDV, DVCpro, DVCpro50, DVCproHD, IMX30/40/50, XDcam-EX, XDcam-HD, AVC-Intra AVC-HD, H264, VMW, DNxHD, ProRes
- All wrappers AVI, MXF, GXF, QT
- Etere MTX can produce during ingest a proxy version in WMV format,
- It includes a graphics engine which allows overlaying 4 or 8 layers of fixed Logos, moving Logos and Crawls
- It is offered as software driver that includes free upgrades and updates as all Etere products
- Capability to work on a dedicated computer so it will exploit the whole potential of Matrox Graphics cards, forming at the same time an important part of a distributed Etere system.



SYSTEM KEY POINTS

- **Fault-Tolerant Architecture:** It is designed to work with a high fault-tolerance level to avoid single points of failure due to the distribution of video data over various ingest and playout nodes which cooperatively manages all video data. Etere MTX allows working with different capacity redundancies to maintain outstanding service reliability
- **Multi-Channel:** The ability of managing simultaneously various different ingest/playout channels makes of Etere MTX a versatile multi-channel solution able to offer video acquisition, real-time compression and network transmission with full support of different video codecs between channels
- **Ready for Media Management:** The distribution of contents from the different MTX engines is controlled by Etere Media Manager, the application that delivers the correct video to the correct place in the correct time. Etere MTX video file transfer capabilities are one of the fastest in the market since its distributed design permits it to avoid performance bottlenecks
- **MAM Integration:** Improve the content acquisition and playout with frame-accurate cataloguing capabilities, use Etere MTX along with Etere MAM to leverage of a comprehensive Media Asset Management system to search, browse and check video contents, as well as enriching them with relevant metadata
- **Scalability:** Etere's distributed architecture allows Etere MTX to work as part of a distributed system, take advantage of ultimate storage and video hardware to create a high-performance digital media solution able to be used along to capture/playout servers, NLE systems, graphics/production servers, automation and master control units, etc
- **Tight Integration:** It is compatible with the entire range of Etere solutions, allowing it to streamline the overall broadcast system at any phase from ingest to automation by offering a robust tapeless content management environment
- **Cost Efficiency:** It allows to introduce easily integrated ingest/playout devices at a lower cost, offering a cutting-edge product with an outstanding performance, including a complete support and most important, an unbeatable relation between quality and price.

