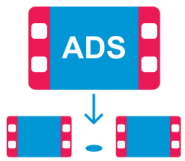


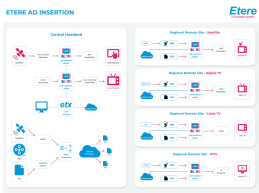
EA1237 ETERE AD INSERTION

Etere Ad Insertion is a multi-channel and end-to-end ad insertion software solution that combines video switching, video server, advertisement, and logo insertion capabilities for targeted ad insertions. Etere manages real-time connectivity between departments, from planning and billings to playouts.

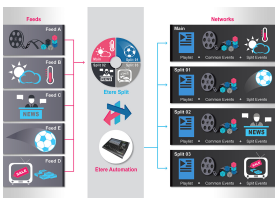


Ad Insertion Icon

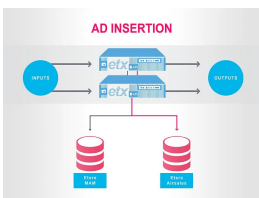
Etere Ad Insertion enhances video monetization opportunities; it effectively manages the end-to-end ad insertion and playout process, including resource management, insertion of filling events on demand, scrolling text, logo and CG insertions. Etere is designed to manage dynamic and targeted ad insertion requirements in any fast-moving environment. Running in automatic or manual mode, it manages real-time insertion of video clips, logos, graphics overlays, and scrolling text into stored and live content for unlimited channels. It combines a video switcher, video server, ad, and logo inserter into an open system ready to fit into any workflow. It streamlines playout complexity with its multi-format capabilities and support for cable, satellite, terrestrial and IP deliveries. Its integrative real-time monitoring and redundancy features provide a highly fault-resilient and accurate performance. Etere can manage unlimited TV channels and scale up or down according to your business needs. This fully integrative software-based solution increases your advertising ROI and operational efficiency.



Etere Ad Insertion



Splice FlowChart



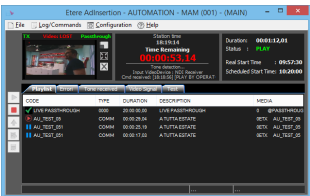
Dynamic Ad Insertion



Digital Video Broadcasting



Ad Insertion Squeeze

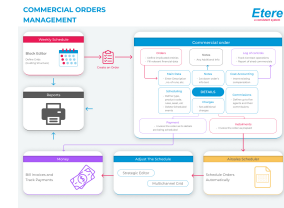


Ad Insertion GUI

Key Features

Capabilities

- Supports multiple platforms, including satellite, terrestrial, cable and IP television
- Manages Ad Insertion on compressed video channels with high-density DPI ad server
- Frame accurate Splicing on any frame
- Intuitive PC and web-based interface enhance control and operational efficiency
- Integrated Cue-Tone decoder
- Fault-resilient performance with main and backup redundancy
- Manages channels independently for each network
- Start via GPI/SCTE signals/VANC codes
- Multi-network support
- Supports IP connection, SD and HD inputs and outputs
- DVB Subtitles
- Supports Splicing and pass-through
- Timeshift with very high accuracy
- Manages loudness control and syncs loudness levels across all channels and formats



Significant Cost Advantage

- IP workflows support a more cost-efficient setup compared with baseband systems
- Uses standard servers
- Lowers total cost of ownership across multiple platforms
- Integrates seamlessly into any environment without a major change in the system
- Does not require a dedicated streaming server with local file-based storage

Ad Insertion

- L-shaped squeeze and overlay for ads
- Insert graphics, texts, crawlers and logos
- Able to manage last-minute changes and fill events
- Flexible ad insertion: Overlay around the content via slices, overlays, and text crawls
- Seamless insertion of advertisements into live, linear or video-on-demand (VOD) content
- SCTE-104 and SCTE-35 compatibility for targeted ad insertion
- Effective video monetization with the location-specified programming

Easy Scalability

- Scalable at any stage according to requirements
- Does not require a major change in the system

Splicing

- Frame accurate Splicing
- Able to splice on any frame
- CBR & VBR splicing
- Stream-to-stream (live to live program)
- File-to-stream (advert to live program)
- File-to-file (advert to advert)
- Stream-to-file (live program to advert)
- Embedded file asset streaming server
- MPEG video playout server

Logo Generation and Embedment

- Enhanced advertisements with the embedded 2D & 3D logo generator, supports multiple overlays and layers
- Seamless commercial graphics/logos workflow from production to edits, scheduling, invoicing and playout
- Pre-set and real-time preview features enable preliminary checks on the graphics
- Dynamic ad insertion: Inserts 2D and 3D logos into live and stored video feeds
- Compatible with a wide range of graphics files: TGA, AVI, MOV, SWF, PNG, JPEG, GIF