

## Etere ETX Graphics Capabilities with HTML5

Etere ETX now supports HTML5 with enhanced graphics capabilities including access to WebGL graphics overlays. Users are also able to capture web pages as live multimedia sources.



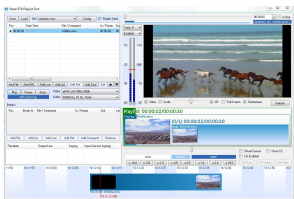
Etere logo



ETX Logo



Logo of HTML5



ETERE ETX interface

Etere ETX supports HTML5 plugins, bridging the gap between broadcast and web with advanced tools including WebGL graphics overlays and the capture of web pages as live multimedia sources with audio. HTML5 is the latest HTML release for animated graphics. The upgrade provides users with a faster performance and more features including support for multiple files, lower CPU usage and an expanded range of presentation options with full control over the animation's sequence and data flow. The upgrade is provided FREE as part of the all-inclusive Etere Support Contract that keeps your system at the leading-edge of technology.

### About HTML5

HTML5 is the latest HTML release based on the Chromium Embedded Framework (CEF) framework for embedding Chromium-based browsers in other applications. It is a markup language available to all Open Web developers for structuring and presenting content on the World Wide Web. HTML5 is optimized for use in cross-platform mobile applications. Additionally, it provides markup and application programming interfaces (APIs) for complex web applications.

### Key Features of HTML5

- Supports complex graphics
- Provides faster speeds and lower CPU usage
- Provides full control over animation sequence and data flow
- WebGL graphics overlay
- Control of the overlay response and dynamic data with JavaScript and commands
- Webpages data can be stored on the client locally and operate offline
- Multimedia support for audio and video is available
- Enables a wide range of presentation options
- Enables capture of web pages as a live multimedia source (with audio)
- Stable performance with no memory leaks

### Etere ETX

Etere ETX is a 4K-enabled and complete Channel-in-a-box with a comprehensive features list. It is compatible with Newtek Network Device Interface (NDI) with full IP support for both HD and SD videos. It also supports multiple layers of 2D/3D graphics including logos, text crawlers and animated graphics on up to 8 layers. It is integrated with an IT-based master control with multi-channel ingest and playout. With Etere ETX inserter, users are able to insert closed captions including CEA 608 and CEA 708 easily. Etere ETX also enables live subtitling with ETX inserter and time delay. The software is able to drive the most popular HD/SD digital video/audio/graphics platforms without using middle-ware/proprietary hardware, making it one of the most flexible systems in the market.

For more information about Etere solutions, please write to [info@etere.com](mailto:info@etere.com)

For more information, visit **NewTek NDI**. **#NDIcentral**

## About HTML5

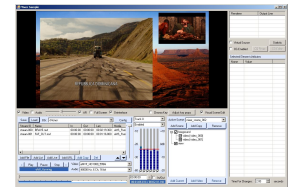
Published in October 2014 by the World Wide Web Consortium (W3C), HTML5 is a markup language used for structuring and presenting content on the World Wide Web. It is the fifth and current major version of the HTML standard. To encourage more interoperable implementations, HTML5 includes detailed processing models which extends, improves and rationalizes the markup available for documents, including markup and application programming interfaces (APIs) for complex web applications. HTML5 was designed to be suitable for cross-platform mobile applications.

For more information, please visit **About HTML5**



## Key Features of Etere ETX

- ☐ 4K, HD, and SD with Up and Down conversion
- ☐ Full IP support for both HD and SD videos, supports NewTek NDI
- ☐ Integrated Countdown Timer that displays the time remaining until the next program
- ☐ Supports multiple layers of 2D and 3D graphics
- ☐ Fully compliant DVB (Digital Video Broadcasting) stream
- ☐ Supports Microsoft ReFS File System
- ☐ Included graphics engine allows overlay of static/animated logos and crawlers on 8 layers
- ☐ Able to perform IP in and IP out, with multiple frame rates and independent IP out services
- ☐ Able to act as a RTMP sender or RTSP receiver
- ☐ Integrated IT-based master control with multichannel ingest/playout
- ☐ Easy insertion of closed captions including CEA 608 and CEA 708 with ETX inserter
- ☐ Create live subtitling seamlessly with ETX inserter and time delay
- ☐ SDI output with support for selected cards (SDI or IP) from the following: Blackmagic and Matrox
- ☐ File formats includes LXF, MOV, MXF, GXF, ASF, MPG-TS, MPG-PS, AVI, DV and MKV
- ☐ Video codecs includes DVCPRO, MPG1, MPG2, MPG4, H.264, HEVC/ H.265, DNxHD, ProRes
- ☐ Audio codecs includes AAC, MP2, MP3, Flac
- ☐ Graphics files includes TGA, AVI, MOV, SWF, PNG, JPEG, GIF
- ☐ Plays files from 10 secs



## **About Etere**

Etere was established in 1987 in Italy and it is amongst the worldwide leaders in Media Asset Management (MAM) and channel-in-a-box software solutions. Etere Media Enterprise Resource Planning (MERP) framework of scalable solutions are used by media enterprises across the end-to-end workflow. Etere MERP modular software including Media Asset Management (MAM), Airsales, Ad Insertion, Playout Automation, Broadcast Management System, HSM Archive, NRCS Newsroom, Broadcast Management System, Broadcast video over IP, IP Multiviewer and Live Censorship are built with an innovative architecture, offering the best flexibility and reliability in the market. Etere headquarters is in Singapore and it has a 24/7 support centre in Italy.

**E-mail:** [info@etere.com](mailto:info@etere.com)

