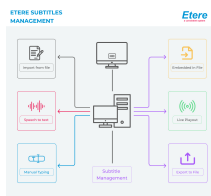


ETERE BUDGET CLOSED CAPTION PACKAGE

Etere delivers a budget closed caption package that fulfills the end-to-end requirements of a smaller TV station or media company. It provides full support for CEA 708, CEA 608, DVB and ARIB closed captions.



Etere logo



Subtitling with Closed Captions



Digital Video Broadcasting Subtitles



Able to manage ARIB

Etere presents an entry-level package to manage closed captions and subtitle requirements across all platforms including TV, web and IP TV. It provides all the essential software modules and features that are needed to manage the complete closed captions workflow of a smaller media company, making it one of the most cost-effective and powerful solutions available in the market.

■ An end-to-end Subtitling and Closed Caption Solution with Multi-language Support

Etere Subtitling and Closed Caption Software is the most advanced captioning solution on the market that is able to manage the complete process of creation, management, burning, playout and conversion of subtitles, captions and other text services for production, post-production and live programs. With its integrated MOS connectivity and teleprompter support, it supports connectivity with Newsroom for live captioning. Users are also able to connect directly to Newsroom via FTP connectivity to manage closed captioning. With its full range of support for CEA 708, CEA 608, DVB and ARIB closed captions, Etere is able to fulfill all captioning requirements effectively. Etere provides the best speech-to-text capabilities on the market with its integrated support for Google Speech-to-Text which supports up to 120 languages and variants.

■ Integrated Ingest Management, Import and Export Closed Captions

From the insertion of subtitles to the extraction, format, conversions, scheduling, frame-rate adjustment, sub-clipping and clip assembly of subtitling, Etere is able to manage it without reliance on complex, expensive and high-maintenance systems. With a single software, users are able to manage the end-to-end subtitling workflow with a fault-resilient automation.

Etere enables users to ingest manually and automatically. Based on configurable workflows, Etere manages ingestion from all common feeds as well as the storage of ingested media into the database. From SD to HD, Etere is able to capture in real-time from any video source, broadcast stream, FTP and IP stream.

Etere enables users to import subtitle files and manage it directly from the same interface with an integrated control console that is embedded with spell-check, language selection and preview, positioning and color edit features. Etere users are also able to import and export closed captions, manage live captions and multi-language subtitling across all platforms, major standard formats and frame-rates. Users are able to

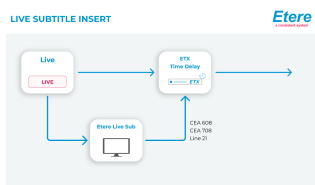
- Import from Rundown including in MOS and FTP
- Import directly from video files including in CEA608 and CEA708
- Import from text file
- Import all subtitle scripts in a single step

■ Low Resolution Browsing and Preview

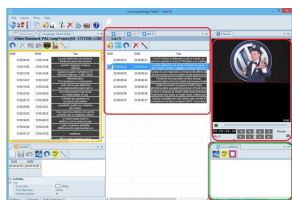
Etere Basic Media Asset Management (MAM) enables broadcasters to preview assets with subtitles. It includes multi-language preview and web preview. With an integrative and centralized database, all edits will be automatically updated instantly.

■ Unlimited Web Support

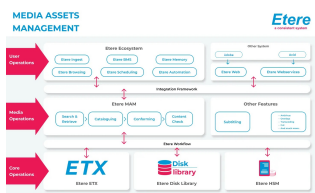
Stay connected with Etereweb which supports real-time previews and edits from any web browser. With its support for unlimited web clients, Etere allows better operational efficiency compared to other traditional solutions.



Live Subtitle Insert



Live Subtitling Interface



Media Asset Management diagram



NewTek NDI

■ Media Manager and Transcoder

Etere facilitates the movement of data with Media Manager, the application that manages the storage and retrieval of video files from a video server to archive. Beyond just a file copy, Etere enables customized policies as well as the scheduled archival of devices, media contents and databases. Users are also equipped with an integrated transcoder that can be used to embed closed captions directly from the same interface.

■ Navigate the Multi-Format World with Etere

Etere supports all commonly used subtitling and closed captions formats including EBU, TXT, STL, PAC, XML, SAMI and SCC.

■ With Full Flexibility to Manage SDI/IP

Etere Closed Caption Budget Package supports both SDI and full IP payout based on Newtek NDI technology. Network Device Interface (NDI) is a royalty free standard developed by NewTek that enables multiple video systems to identify and communicate with one another over IP as well as to encode, transmit and receive many streams of high quality, low latency, frame-accurate video and audio in real-time. It does not require traditional SDI hardware, cables or other accessories, making it scalable, easy to manage and extremely cost-effective.

■ Live Caption with One ETX CC Inserter Inclusive

The package includes one ETX Closed Caption inserter that facilitates live captioning. During a live broadcast, live captions are inserted via ETX CC inserter while Etere ETX Time Delay manages the delayed playback of subtitles according to the dynamic requirements of the program. With these advanced tools, live captioning is seamless, reliable and always frame-accurate. Operators can insert live subtitles to the CC Server through:

- Re-speaking using Microsoft, Dragon technology or Google Speech-to-Text technology
- Typing or import from file
- Etere MOS connector connects to NRCS system to receive teleprompter content
- FTP connection to NRCS

■ Etere Closed Caption Budget Package supports up to 10 clients/servers

To find out more, talk to us at info@etere.com!

For more information, visit **NewTek NDI**. #NDIcentral