

## EA1224 ETERE DATABASE MANAGEMENT

Etere Database Management module is the first step to use an Etere system. With it, users can configure, define the parameters and tune up the features of their Etere system easily.



Etere logo

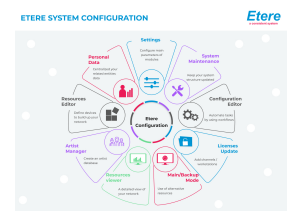
Etere Database Management module contains forms that you can use to configure features and functionality in other Etere modules. Before using Etere, users must set the relevant parameters correctly to tune-up the system. Configurations in Basic must be set up and completed before you can use the features of the other modules. The expansive features of Etere modules can only be enjoyed after the configurations and settings have been managed correctly. Etere Basic module is a comprehensive fast and efficient tool to facilitate:

- Total configuration of all the system settings
- Complete management of all user rights, protect and manages your data in a simple and highly secure
- Monitor, control and manage risks with Etere SNMP Console

### CONFIGURATION

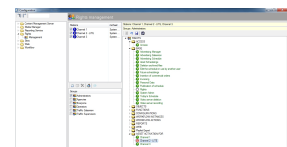
**Etere Configuration** is the module that centralizes all the main settings of the various modules that form part of an Etere system, thus allowing the administrator to easily configure the system both, easily and efficiently. It's very important to configure all the setting in the best way to use Etere solution in the best way. Through it you can:

- ☐ Personalize the way Etere works so it better fits your needs through the creation and configuration of customized workflows which will carry out the most important background processs
- ☐ Configure all hardware equipment
- ☐ View a total configuration scheme
- ☐ Check the database integrity for your complete safe
- ☐ Manage the user licence, customers/suppliers data



### USER RIGHTS

**Etere User Rights** manages your profile in Etere system and connects to active directory to retrieve authorizations and properties. Etere Rights system includes more than 200 options; you can create a perfect profile of every user, decide who can use a specific Etere solution or only some functions of it, or indicate which data the user is allowed to see or modify.



## SNMP CONSOLE

**Etere SNMP Console** is a simple, intuitive and user-friendly solution that helps to optimize all the infrastructure performance and availability of a system, it provides smarter solution since it takes under control not only an Etere system but all the devices and processes involved in the overall IT/media system. Etere SNMP Console provides a common, flexible and easy-to-use browser interface, designed to be highly customizable to facilitate system monitoring, it's able to detect and recover potential problems automatically.

