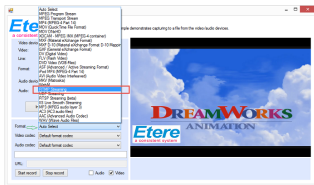


Etere Provides RTMP Input and Integrated Time Delay

Etere gives you better flexibility with the capability to use RTMP as an input source. What's more, it includes configurable time delay capabilities for live repurposing.



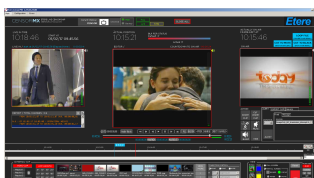
Etere logo



RTMP streaming



ETX and Multiviewer



CensorMX Interface

Streaming is one of the most popular ways to deliver audio and video content on the internet. The 4K-ready Channel-in-a-Box solution, **Etere ETX**, provides you with the best flexibility to meet the demands of the market. Etere users can now enjoy greater freedom when it comes to their live streaming setup with the option to select an RTMP stream as an input source.

Moreover, the integrated time delay feature allows the flexibility to configure a delay between preview and real-time. The time delay technology of CensorMX is now integrated with both **Etere ETX** and **Etere CensorMX**. Time delay can be used in live broadcast to prevent unacceptable content such as profanity and bloopers from making it to air. Not only that, it also enables a multi-language live commentary. Etere allows you to customise the details of your time delay including

- Set the number of frames to delay the stream for frame accuracy
- Adjust compression quality
- Set a time interval for the synchronization of delayed video

Etere ETX provides a perfect synergy between your playout, ingest, automation, master control and graphics environments. It supports SDI, IP and NDI transmission and is ready for changes in the IP mediascape. Etere ETX integrates all the features you need to bring a channel on-air including closed caption and live subtitling insertions, graphics insertion on up to 8 layers, integration with the Etere Master Control touch screen panel for the simultaneous management of multiple channels, virtual machines capabilities and cloud support. In addition, is also integrative with **Etere ETX-M Multiviewer** which lets you monitor unlimited video sources on a single display.

Real-Time Messaging Protocol (RTMP) is an Adobe Proprietary protocol for the high-speed streaming of audio, video and data over the internet. Based on Transmission Control Protocol (TCP), RTMP provides optimization of video and audio data transmission. In RTMP streaming, the server divides the information into segments to enable a smooth display with as much data delivery as possible. Etere is not a streaming server, however, users can send RTMP streaming from Etere to a RTMP streaming server. Additionally, it is also possible to receive RTMP streaming through a remote URL and playout in Etere.

Key Advantages

- Low real-time transmission delay
- Supports the transmission of audio and video in various formats
- Transfer data instantly without any local caching
- Efficient delivery of live streaming media with lower latency and overhead
- Better video and audio quality
- Greater connection reliability
- Configurable time delay capabilities

About Etere

Since its beginnings in 1987, Etere has been preparing users to be ready for the future. Etere is a worldwide provider of broadcast and media software solutions backed by its mark of excellence in system design, flexibility and reliability. Engineered in Singapore, the revolutionary concept of Etere Ecosystem promotes real-time collaborations and enhances operational efficiency across the entire enterprise. Etere Ecosystem software solutions including Media Asset Management, Channel-in-a-Box, Newsroom, Ad Insertion, Airsales, Automation, Broadcast Management System, Censorship, HSM Archive, Logging, OTT/VOD Delivery, Radio-Live, Subtitling and Captioning software are built with an integrative Web and Windows architecture that are customisable to fit perfectly in any system. Etere system is developed by 4 different groups in different countries to ensure reliability and quality. Etere delivers on its service excellence commitment with its dedicated team and a 24/7 worldwide support. Its portfolio of digital technologies and market-proven remote/on-site solutions including consultancy, training, installation and demonstrations are ready to run with your business no matter where you are. Etere enhances your adaptability for the future and empowers you with the software tools to drive your business to greater heights. www.etere.com

