

EA1352 ETERE ACTIVESYNC

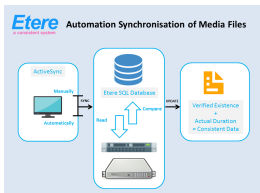
If you wish to use the evergreen Hot Folder, Etere ActiveSync is the future. Etere ActiveSync is a versatile software solution to discover files and metadata as well as to update ETERE MAM. No Policy is too complex for Etere ActiveSync.



Etere logo

Etere ActiveSync is a robust software that allows broadcasters to create or update links between video files and assets present within the database, through an automated process. With ActiveSync, you can be assured of data consistency at every stage of the workflow.

ActiveSync is able to run manual or automatic scans on all video files stored in the database. The software can run on main and backup modes for added redundancy. It is also able to synchronize high and low resolution files stored on any device to equip you with the best flexibility.

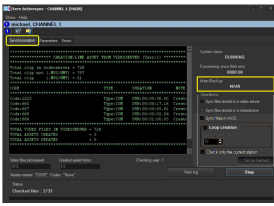


Etere Active Sync



Key Features

- Seamless synchronisation of data within the database
- Create or update links between video files and assets present within the database
- Scan all video files (manually or automatically)
- Customise synchronisations between video files and asset forms
- Monitor the synchronisation processes in real-time
- One-click verifications
- Automatic or manual scan and synchronization
- Ensures consistency of data at all times
- Capability to incorporate into the system all the video files present on the device but currently not linked to any asset
- Main and back up mode with redundancy
- Real-time status indicator to view the time remaining to the next check
- Capability to sync files stored in a cloud device
- Import file sequence assets

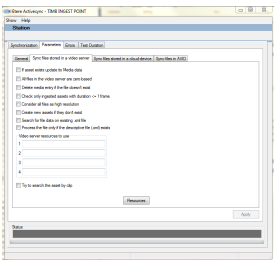


Main and Backup Mode

Etere ActiveSync ensures that your system is always synchronised and your database is always accurately updated. The highly effective software is able to run on main and backup mode in different scenarios for redundancy. These include:

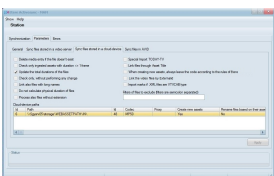
- Running two instances of Etere ActiveSync on different computers. If the main system stops running, the backup system is able to replace the main instantly
- Enabling the main and backup mode through the ActiveSync configuration menu. Users are able to set the tolerance duration for the backup server to be activated in case the main server is down

Synchronization of Files Stored in the Video Server/Cloud-Device



ActiveSync automatically verifies and synchronises files stored in the video server or cloud-device. With ActiveSync, users are able to configure the parameters to be used during the synchronisation of high resolution video files including those of MXF and DV file formats. Additionally, it is also able to synchronise low-resolution video file formats such as those in WMV and MPG formats as well as subtitle and caption files including those in STL and SCC formats. ActiveSync is able to automatically delete files that do not exist or if the asset form is associated to a non-existent video. With a few quick shortcuts, ActiveSync is able to check if the video file's stored data matches with the database files. Not only that, it is also possible to incorporate those video files present on the device but is not currently linked to any asset. It eliminates manual tasks and ensures the system is perfectly aligned for accuracy and consistency at every stage of the workflow.

Discovery Mode and Bundle Asset Mode



If Discovery Mode is enabled, ActiveSync automatically searches the sub-folders and creates a new asset based on the discovery xml detected. Subsequently, the matching file is linked to the asset as a metafile.

In Bundle Asset Mode, operators are able to ingest assets as a bundle through a watch folder. Every file is processed through a set sequence of events. Subsequently, all files found in main path and sub-folders would be processed and linked to the new asset as a single metafile, with the same codec.