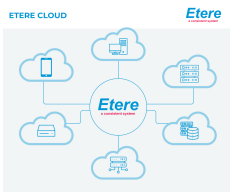


EA1310 ETERE DRIVER FOR MICROSOFT AZURE CLOUD COMPUTING SERVICES

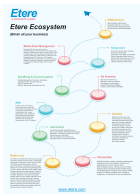
Etere Ecosystem integrates with Azure Cloud. The seamless connectivity between Etere and Azure Cloud empowers users to perform direct transfers of bulk data securely and quickly.



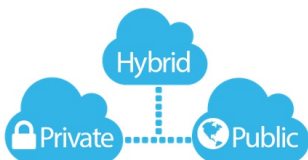
Etere Cloud diagram



Windows Azure



Etere Ecosystem



Cloud storage solutions

Etere integrates seamlessly with Microsoft Azure Cloud for secure, fast and flexible file transfers, content distribution, file sharing and offsite backup. Etere continuously provides value with its flexibility, interoperability and simplicity of data integration. Etere's tight integration with Microsoft Azure allows you to access the cloud storage directly without third-party tools, drivers or software. The integration includes customising multiple levels of user permissions or setting up a virtual directory available to all users. Etere provides maximum flexibility to users to ensure a perfect fit for their environment.

Etere supports public cloud, hybrid cloud and private cloud storage services. Additionally, Etere MD5 Checksum enables the generation and verification of the security file hash of media files associated with assets each time a media file is moved from one location to another. This prevents data corruption or modifications to the file. Etere is built with a distributed software architecture to provide a fault-resilient performance at every step of your workflow. With Etere's seamless integration with Microsoft Azure, you can build an agile, flexible and intelligent architecture within secure servers in the cloud.

Key Benefits of Etere Driver

- High availability and secure environment
- Etere supports private cloud, hybrid cloud and public cloud deployments
- Reliable file transfer, content distribution, file sharing and offsite backup
- High-speed transfer, even with bulk data
- Increased speed and agility - New IT resources are ready in a few clicks
- Etere's MD5 verification on files protects the reliability of the transferred media against modifications, substitutions or corruption
- Quick setup and easy access; does not require third-party tools, drivers or software to access the object storage
- Manage file revisions quickly
- Files may be compressed to provide transfer rates higher than line speed
- Multi-user access with customisable file access rights
- Transfer big data and send large files at full line speed regardless of file size
- Etere's distributed software architecture ensures a fault-resilient performance

About Microsoft Azure

Microsoft Azure is a cloud computing platform and infrastructure started by Microsoft to build, deploy, and manage applications and services through a global network of Microsoft-managed data centres. Azure offers four different forms of cloud computing: infrastructure as a service (IaaS), platform as a service (PaaS), software as a service (SaaS) and serverless. It supports many programming languages, tools and frameworks, including Microsoft-specific and third-party software and systems. Microsoft Azure backs up your data in almost any language and from anywhere in the world. It is scalable, flexible, and allows users to pay only for the needed services. <https://azure.microsoft.com/en-us/>