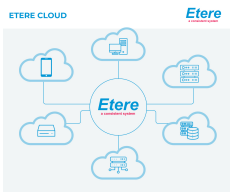


EA1440 ETERE DRIVER FOR GOOGLE CLOUD COMPUTING SERVICES

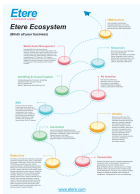
Etere Ecosystem integrates with Google Cloud infrastructure. The seamless connectivity between Etere and Google Cloud empowers users to move bulk data between systems securely and quickly.



Etere Cloud diagram



Google Cloud Services



Etere Ecosystem



Cloud storage solutions

Etere driver for Google Cloud provides seamless integration and direct access to Google Cloud from your Etere interface. The streamlined solution eliminates needing third-party tools, drivers, or software. You can easily access your Google cloud-based infrastructure with only a few clicks. Etere supports multi-user access and provides a distributed architecture for fault-resilient performance. Setting up directories within Etere servers is easy. Etere enhances business agility with its Active Directory integration that allows you to customise multiple levels of user permissions or to set up a virtual directory available to all users.

Etere supports private, public and hybrid cloud infrastructure to meet your unique business needs. Additionally, Etere provides enhanced data management with MD5 checksum, which generates and verifies the security file hash each time a media file is moved from one location to another. This automated process prevents data corruption or unauthorised modifications to files.

Highlights of Etere Driver

- High availability and secure environment
- Etere supports private cloud, hybrid cloud and public cloud deployments
- Reliable file transfer, content distribution, file sharing and offsite backup
- High-speed transfer, even with bulk data
- Increased speed and agility - New IT resources are ready in a few clicks
- Etere's MD5 verification on files protects the reliability of the transferred media against modifications, substitutions or corruption
- Quick setup and easy access; does not require third-party tools, drivers or software to access the object storage
- Manage file revisions quickly
- Files may be compressed to provide transfer rates higher than line speed
- Multi-user access with customisable file access rights
- Transfer big data and send large files at full line speed regardless of file size
- Etere's distributed software architecture ensures a fault-resilient performance

About Google Cloud Services

Google Cloud provides multiple options for hosting and computing. It allows users to design their cloud-based infrastructure to provide maximum control and flexibility. With Google Cloud, users can expect fully automated backups, replication, encryption, and capacity increases worldwide while ensuring high availability.

<https://cloud.google.com/>