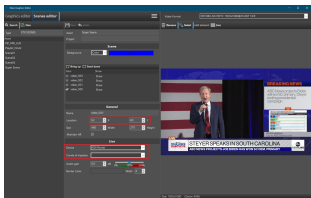


Etere Integrates Picture-in-Picture (PIP) in ETX Playout

Etere ETX integrates Picture-in-Picture (PIP) capabilities with a user-friendly interface to unleash the infinite potential of next generation content delivery.



Channel in a box Etere
ETX



Re-position and resize



Picture in Picture Etere
Automation



Picture in picture



Etere ETX

Etere releases a new Picture-in-Picture feature in **Etere ETX** that redefines content delivery. The new feature allows users to insert live graphics and videos as an overlay over a streaming video. When broadcasters have at least 2 or more layers of live graphics or videos, PIP allows the superimposing of layers on top of each other with customisable layouts.

With Etere, you can deliver compelling content effortlessly from a single console. Content creators can resize and re-position the content layout to maximize content exposure. For example, a live streaming advertisement can be inserted to play at the bottom right corner of a live sports broadcast. Etere creates new opportunities for broadcasters to repurpose and monetise content. It brings infinite opportunities to broadcasters to connect with their audiences through its fully integrative toolset in a single application. With Etere, you can do more with less.

Etere allows broadcasters to deliver rich content with different media elements including the superimposing of graphics, live video streams and feeds. When a video is in PIP mode, it will remain within view while at the same time allowing the audience to consume other content simultaneously to deliver a more engaging viewing experience. For example, the feature is commonly used in news production where multi-camera coverage from different venues are streamed to a live studio while newscasters piece together the latest updates with the field reporters.

Highlights

- Empowers content creators with the tool-set to insert live video streams and images over a video broadcast
- Deliver live newsroom content with multi-camera coverage streams on a single screen
- Manage advertisement insertions for live streams
- Quick selection of pre-configured layout templates
- SDI/IP/NDI support for live streaming
- Customisable and configurable settings including the size and position of the video streams
- Manage interactive programs with multiple integrations of live streaming elements including text, video and images
- Live streams can be programmed with audio and video transition times or have the audio on mute during streaming
- Seamless integration with Etere Executive Scheduling

Etere ETX

Etere ETX empowers you with all the playout features you need, including cloud playout, ingest, automation, master control and interactive graphics with consistent precision for even the most demanding of environments.

Etere Automation

Designed with flexibility in mind, Etere Automation transmits streaming events according to the videosever capabilities, plays in A/B switch mode and remotes several devices simultaneously using network, serial, and GPI connections. Furthermore, Etere Automation leverages on the database of Etere Media Asset Management to integrate all the activities in a single environment, thus enabling the easy storage and retrieval of unlimited assets.

For over 30 years, Etere brings transformative software solutions and in-depth operational knowledge to broadcasters from all around the world. We share a common goal to help you succeed.

About Etere

Since its beginnings in 1987, Etere has been preparing users to be ready for the future. Etere is a worldwide provider of broadcast and media software solutions backed by its mark of excellence in system design, flexibility and reliability. Etere Ecosystem software solutions including Media Asset Management, Channel-in-a-Box, Newsroom, Ad Insertion, Airsales, Automation, Broadcast Management System, Censorship, HSM Archive, Logging, OTT/VOD Delivery, Radio-Live, Subtitling and Captioning software are built with an integrative Web and Windows architecture that are customisable to fit perfectly in your system. Etere delivers on its service excellence commitment with its dedicated team and a 24/7 worldwide support. Its portfolio of digital technologies and market-proven remote/on-site solutions including consultancy, training, installation and demonstrations are ready to run with your business no matter where you are. Etere enhances your adaptability for the future and empowers you with the software tools to drive your business to greater heights.

