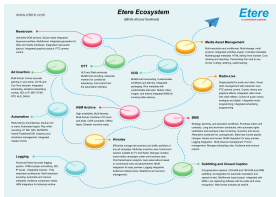


Etere Launches an Upgraded Etere Web with a New Licensing Policy

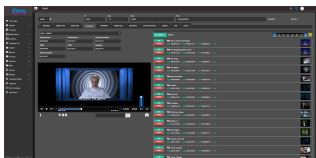
Etere Web features a new floating license policy that offers greater flexibility.



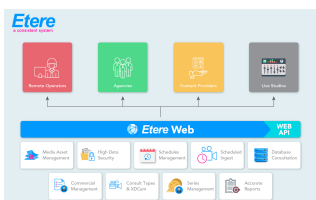
Etere Ecosystem



Etere Web Multiplatform



Etere Web



All-in web solution

Etere Web has been redesigned with a faster interface and enhanced integration capabilities. It includes all core functionalities of the Etere Ecosystem on a mobile-responsive web interface that can be accessed from any location and on your preferred device. Designed for the media executive on the move, Etere's multi-platform capabilities and responsive real-time updates allows you to manage and track your workflows on any tablet, laptop, smartphone or PC. All existing customers will receive a set of licenses (twice the number of CAL licenses) at no additional cost.

Getting Started - Access to the New Etere Web at No Additional Cost

All existing customers will receive a set of licenses to the new Etere Web at no additional cost. The number of licenses provided will be twice the number of Etere Client Access Licences that are in place. With the new license scheme, a limited number of licenses can be shared among a larger number of users. For example, with 10 licenses, 10 users can log in to Etere Web concurrently. However, the license can also be shared among a larger group of users who log in at different timings. Etere is scalable to the needs of your organisation and it supports an agile business strategy. Etere Web is designed to enhance the user experience, improve collaborations between teams and bring your business continuity to the next level.

Active Directory Integration with Customisable User Rights

Etere automatically defines your permission structure according to your organisation's Active Directory configurations. Moreover, you can customise web permissions for each user or user group based on web group, stations, job roles and other categories.

Real-time Updates and Tracking

Stay connected with your team mates even while on the move with real-time updates from a centralised database.

Distributed Architecture

Etere is designed for fault tolerance with a distributed architecture that supports even the largest capacity of workflows and most complex of media management actions.

Automated and Customisable Workflows

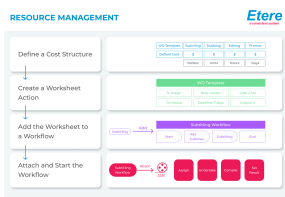
Automation does not need to be expensive or complicated. With the Etere workflow designer tool, you can create your workflows and broadcasting rules to fit your business requirements perfectly. Simply select, add and launch. With the automation of workflows, manual tasks are significantly minimised. The workflow tool allows you to plan and configure unlimited workflows to automatically perform tasks including transcoding, scheduled ingest, quality checks, move to archive, data transfers and more. In addition, get the business visibility you need, all on a single GUI with the Workflow Monitoring Tool.

Secure your Valuable Data from any Location

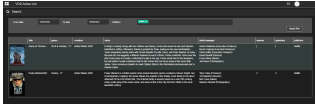
Etere keeps your data and media assets secured with multiple layers of security including Hypertext Transfer Protocol Secure (HTTPS) connections, SSL encryption and customisable user-level access.

Agenda

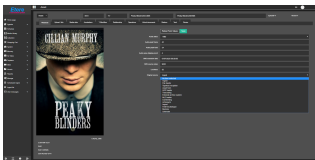
With the right planning, you can effectively enhance operational efficiency across



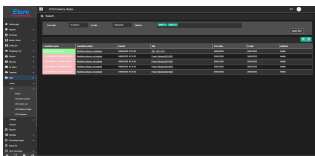
Resource Management



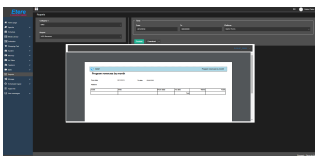
VOD Active List



Etere Web Metadata



Etere web VOD delivery status



Reports on etere web

workflows and stay on top of your game. Part of the Etere Media Asset Management, the Agenda allows users to manage, assign and monitor tasks and appointments in real-time. From Etere Web, users can view their personal calendar and task list once they are logged in. Tasks can be assigned to a group or to individuals. Once a task has been modified, its status will be updated in real-time. After a task has been completed, it can be forwarded for approvals easily using Etere Workflow tool.

Centralised Management of Video-on-Demand Media

Now you can organise, manage and deliver your non-linear content from the web, wherever you are. Etere supports a wide variety of VOD delivery platforms including Amazon Prime, Netflix and more.

Etere Ecosystem integration

Etere Web is seamlessly integrated with Etere Ecosystem including Airsales, HSM archive, Media Asset Management, Automation, Broadcast Management System, Memory and Resource Management. The easy usability of Etere solutions extends your business continuity beyond the confinements of the studio.

Rich Metadata for Assets

From series to episodes, Etere MAM manages it all. Effective content management simplifies the re-purposing of media assets and enhances the value of your media assets. From both the PC and web interface, users can add flexible metadata to their media assets and easily establish links between assets.

On Demand Reports with Business and Operational Insights

Get valuable data analytics on your operational workflow and business insights with Etere Web reporting tool. With a complete range of preview and download options available, you can have the data you need on demand for all your strategic business decisions.

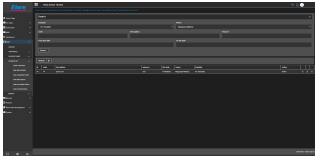
Shopping Cart

Add the service request that you need to cart and check out instantly. Etere Shopping Cart allows you to plan your resources, create requests and have them executed accurately whenever it is needed. The automated process ensures accuracy at every step of the operation.

Preview, Play and Manage

Etere Web comes with an embedded media player that allows you to search, browse and preview media assets on the device of your choice. It features playback controls including subtitles, audio tracks and EDL tracks selection. Furthermore, it enables quick edits such as video cuts and the creation of segments.

Get the drill down into how Etere multi-platform features can help you to enhance team collaborations and operational efficiency.



The Shopping Cart on
Etere Web

About Etere

Etere Ecosystem software solutions including MAM, Channel-in-a-Box, Newsroom, Ad Insertion, Airsales, Automation, Broadcast Management System, Censorship, HSM Archive, Logging, OTT/VOD Delivery, Radio-Live, Subtitling and Captioning software are built with an integrative Web and Windows architectures that are customisable to fit perfectly in your system. Etere delivers on its service excellence commitment with its dedicated team and a 24/7 worldwide support. Its portfolio of digital technologies and market-proven remote/on-site solutions including consultancy, training, installation and demonstrations are ready to run with your business no matter where you are. Etere enhances your adaptability for the future and empowers you with the software tools to drive your business to greater heights.

