

# EA1340 ETERE STMAN VIZRT INTEGRATION PLUGIN

Etere extends interoperability with Vizrt systems with an integrated system that allows the export of Etere playlist in an XML format into a shared location where Vizrt system will be able to import it to have all events and metadata updated.



Etere logo

Etere extends interoperability with Vizrt systems with an integrated system that allows the export of Etere playlist in an XML format into a shared location where Vizrt system will be able to import it to have all events and metadata updated.

As demand for interoperability and open systems increases across the industry, Etere provides better connectivity and efficient operational models for its users. Its latest technology allows Etere and Vizrt users to keep their workflow seamless and synced between the two systems.

### How it Works

From Etere Executive Scheduling, users can manually insert primary and secondary events into the broadcast playlists.

Subsequently, **Etere F90** automatically exports current and next-day broadcast playlists as a . XML file to a pre-configured location. The automatic export happens within a pre-determined frequency.

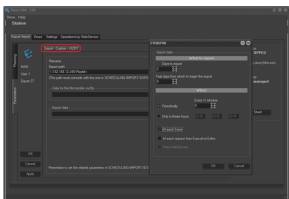
In the next step, the Vizrt Multichannel System imports broadcast playlists from the XML file in the pre-configured location, loading primary and secondary events contained on it.

Each time **Etere Automation** executes a command, the plugin will notify the Vizrt Media Sequencer. The Vizrt system will replicate the instructions and keep the graphics in the playlist consistently synchronized with the broadcast playlist.

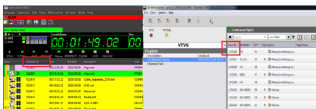
Renowned for its extensive interoperability with external devices and systems, Etere effectively integrates internal and external management information across an entire organization.

### Prerequisites

This module requires STMan and F90 already present in the system.



STMan Vizrt



STMan Vizrt



STMan Vizrt