

## EA6772 ETERE MAM - NLE INTEGRATION FOR DAVINCI RESOLVE (UNLIMITED LICENSE)

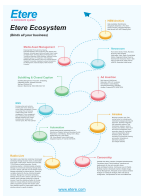
Etere advances your creative work with the state-of-art solution between the Etere Ecosystem platform and BMD Davinci Resolve.



BMD Davinci Resolve

With the seamless integration between Etere Ecosystem and **BMD Davinci Resolve**, content editors can access the professional editing, color, effects, and audio post-production video editing software by Blackmagic directly from the Etere interface. With a login, every user can see all available assets and start connecting with Etere database.

- [Etere MAM](#) to search and preview MAM assets link assets without switching screens, search by asset code, integrate task list
- [Etere HSM](#) for partial file restore
- [Etere Promo Placement](#) to receive new promos
- [Etere Nunzio Newsroom](#) to retrieve rundown stories and for fast content publishing

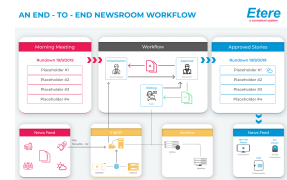


Etere Ecosystem

### Nunzio Integration

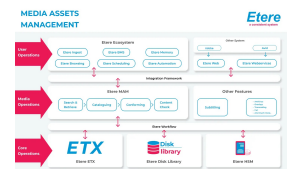
Etere plug-in for BMD Davinci Resolve gives Newsroom editors the capability to push their edited content into rundowns quickly thanks to a seamless workflow integration between Etere MAM and BMD Davinci Resolve based on:

- ☐ Direct access to the archive without exiting BMD Davinci Resolve
- ☐ Easy search of stories with missing video
- ☐ A quick search of rundowns and delivery of rendered content
- ☐ Efficient editing that eliminates unnecessary transfers



### MAM Integration

Etere MAM plug-in for BMD Davinci Resolve brings a more flexible way to search and preview media assets without switching screens. Etere users can link sequences in BMD Davinci Resolve directly to new and existing asset forms in Etere MAM. They can export the markers between BMD Davinci Resolve and Etere, eliminating technical barriers and enabling greater operational efficiency. In a typical scenario, users may open sequences and projects from the Etere MAM database in BMD Davinci Resolve and save files or projects back to Etere MAM.



### Enhanced Security

The Etere extension panel for BMD Davinci Resolve provides a robust access system that ensures the security of the MAM system. Users authentication in the Etere system runs through a custom login policy or an automatic Active Directory accounts management.

