



# MEMORY

**ETERE Memory is a digital video logger that records, stores and plays back Mpeg4 video files**

- 100% software solution
- No dedicated hardware
- Record 24 hours in low resolution
- Delete automaticall all recordings which date of recording exceeds the selected period

Replace all of your blank tapes, tape decks, tape libraries, and costly man-hours of replacing & labeling log tapes with this easy to use, automated video logging system.

It's a 100% software solution, low cost and easy to maintain, it doesn't require any dedicated hardware and it works on Windows 2000 professional/Windows XP PC.

ETERE Memory makes it easy for you to see what happened two hours ago, two days ago, or two weeks ago!

With ETERE, you can:

- > Simultaneously record multiple channels of video and playback from a standard PC.
- > Network an unlimited number of recording workstations, and store the Video on a common server.
- > Choose Video recording quality on each channel.
- > Record Video from any source.
- > Keep a 100% accurate record of what went to air (e.g. litigation, FCC request).
- > Track your own stations, as well as your competitors!
- > Allow clients to hear exactly how their commercials were on the air.

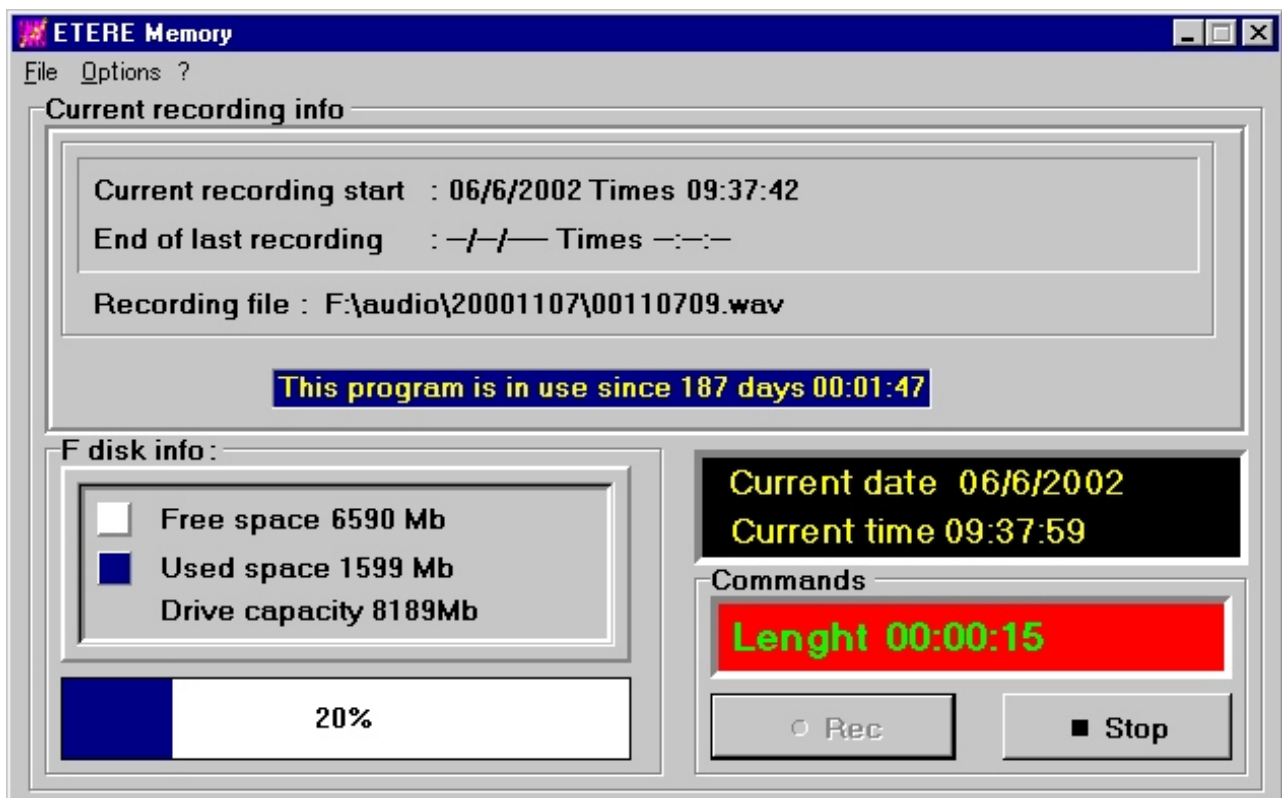
ETERE Memory keeps archived all broadcast recordings; the timeframe is limited by your disk or archive space.

The interface, really called "user friendly", makes it simple to use, it furnishes all information regarding the current recording and free space on the hard disk.

ETERE Memory allows recording and viewing (low resolution clips), contemporarily.

It can be used as a broadcast "historical archive", by giving to the user to replay an entire program or just a part of it.

ETERE Memory creates video files for every hour that is recorded in a directory which is named by date when it had been recorded (Yyyymmdd format); this structure guarantees to the user a major suitability and speed while searching and previewing (for a future check).



File format in use is Mpeg4, and the bit-rate can be selected.

A media management internal process provides to delete automatically all recordings which date of recording exceeds the selected period, ad so it will free up the space for future recordings.

It is still possible though, by using standard Windows functions, to download manually all parts of the record to the external archive (DLT, LTO, and DVD).

In case the alimentation is missing and the system is not in the continuous group or it runs out, the AUTOSTART function restores the alimentation, and the system continues to record automatically, without operator's participation.

Any "As run log" file, helps you to find out all that was going on (voluntary or forced breaks of the process, etc.), for a major system control.

But the best It is completely integrated with ETERE Automation, and so it allows to control the real on air by simply point and click on the as run log, The ETERE as run log reports all the info of the scheduled programs, this make ETERE Memory the most powerful tool.

#### Suggested Hardware:

Pentium III or better with 128MB Ram, Windows Media Player 7.1, DirectX 8, Video capture card, Windows 2000 professional/Windows XP.



**ETERE**  
 P.O.Box 129  
 62029 Tolentino Italy

info@etere.com  
 www.etere.com  
 Tel. +39 0733 9564  
 Fax +39 0733 956335