

Etere
a consistent system

Russian Business Channel



Media Asset Management and Newsroom Integration

TABLE OF CONTENTS

1.	INTRODUCTION	4
2.	ETERE SOLUTION: OVERVIEW	5
3.	ETERE SOLUTION: ARCHITECTURE	6
	3.1 A DISTRIBUTED SYSTEM.....	7
	3.2 MULTI-LEVEL FILE ACCESS HIERARCHY.....	7
	3.3 TAPE LIBRARY MANAGEMENT	8
4.	ETERE SOLUTION: MEDIA FUNCTIONALITIES.....	9
	4.1 MULTIPLE STORAGE MANAGEMENT.....	9
	4.2 CUSTOM DESIGN WORKFLOW	10
	4.3 INTEGRATION BETWEEN WORKFLOWS	11
	4.4 VIDEO FILES QUALITY CHECK WORKFLOW.....	12
	4.5 VIDEO FILES CONTENT CHECK VIA WORKFLOW	12
	4.6 VIDEO FILES ARCHIVING WORKFLOW	13
	4.7 VIDEO FILES RESTORE WORKFLOW.....	13
	4.8 VIDEO FILES TRANSCODING	14
	4.9 VIDEO FILES CHECKSUM MD5 VERIFICATION.....	14
	4.10 VIDEO FILES CUT ACTIONS.....	15
5.	ETERE SOLUTION: COMPONENTS.....	16
	5.1 ETERE INGEST: ENTERPRISE CAPTURING SYSTEM.....	16
	5.2 ETERE MTX: DIGITAL CAPTURE USING MATROX VIDEO CARDS	18
	5.3 ETERE MAM: BROWSING AND EDITING.....	19
	5.4 ETERE MOS GATEWAY: NEWSROOM INTEGRATION	21
	5.4.1 ENPS compatibility.....	22
	5.4.2 Segments management.....	24
	5.4.3 Automation Integration.....	24
	5.5 ETERE AUTOMATION: PLAYOUT SYSTEM	25



- 5.5.1 Secondary Events Management 25**
- 5.5.2 Live Events Management..... 26**
- 5.5.3 As-Run Logging..... 27**
- 5.6 ETERE MEMORY: AUTOMATIC VIDEO LOGGER 27**
- 5.7 ETERE AIR SALES: COMMERCIAL TRAFFIC MANAGEMENT..... 29**
- 5.8 ETERE HSM: A TAPE BASED ARCHIVING..... 31**
- 5.9 ETERE MEDIA MANAGER: A DIGITAL ARCHIVING AND DELIVERY 32**
- 5.10 ETEREWEB: POST-PRODUCTION INTEGRATION 34**

- 6. CONCLUSIONS35**

- 7. ABOUT ETERE37**

1. INTRODUCTION

RBC TV (business television channel) is the only source of business news on Russian television, it goes live since September 2003, covering economic, financial and relevant political events in Russia and abroad, featuring analytical reviews, forecasts and expert commentaries, interviews with top business people and politicians, business press reviews, as well as offering special programs that give an in-depth look into current issues for Russian business.

Over 90% of information featured on RBC TV is dedicated to events in Russia and produced in-house. RBC TV has a professional team of 650 specialists with a background in business media, including 40 analysts from commercial banks and financial companies.

RBC TV broadcasts 24 hours a day: live broadcasting from 7 a.m. to 1 a.m. with recaps of top stories and analytical blocks from 1 a.m. to 7 a.m. RBC TV is a unique television channel, as it has combined two concepts of broadcasting - news and analysis. The channel provides its audience with morning broadcasting, daytime broadcasting (analytical programs) and evening broadcasting (news, wrap-ups of the day's top stories).

RBC TV is moving its broadcast workflow to a tapeless environment, able to capture, edit, catalog and deliver contents with greater speed and efficiency, to accomplish this objective, RBC TV has requested the implementation of a tapeless news workflow system that interconnects the various departments of the station including Newsroom, Video Studios, Post-Production, Media Management, Traffic Server, Playout system, and the archiving and storage systems.

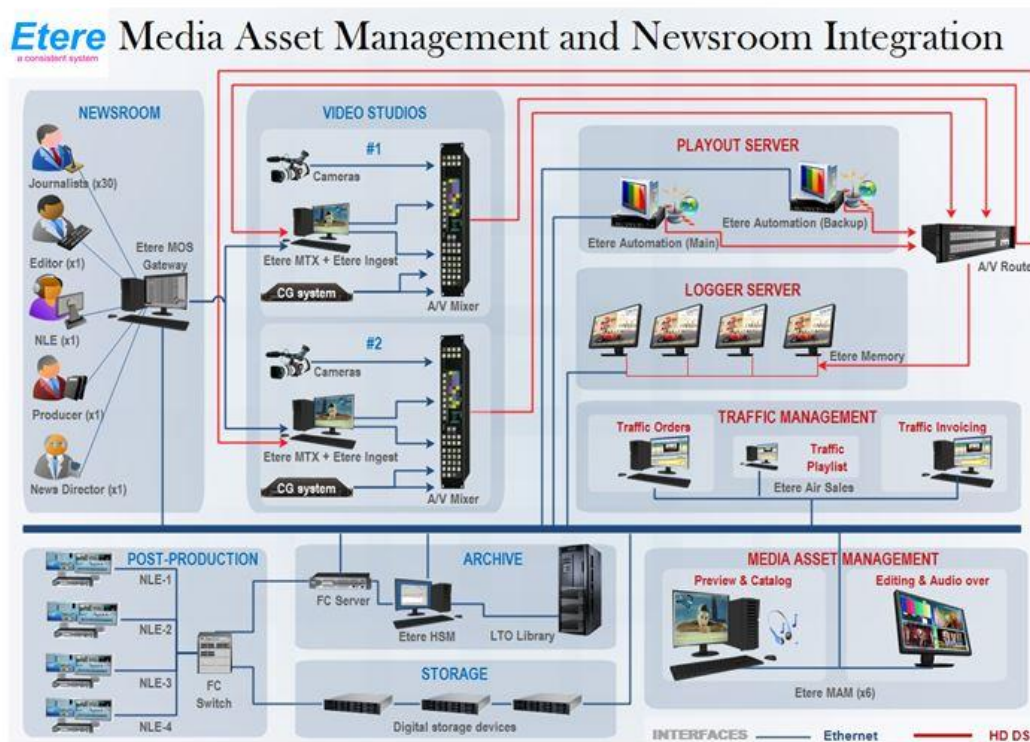
Etere's solution is a distributed system that increases efficiency and avoids human error by centralizing decision-making, content creation and monitoring of the news broadcast over one integrated system, this system maintains consistency between the newsroom, the production and the playout. Etere will allow playlists, formed by news, programs and commercials, to be prepared in advance across an accurate schedule structure, supporting the last minute modifications that characterize the playout of News, with faster operations, and increased efficiency.

This paper describes how Etere, a world-wide media management solutions provider for broadcasters, media companies, content providers and house, is able to provide a solution that will closely interact with the current News system as well as with the other sub-systems present in the

station, from ingest to playout, allowing to search, browse, edit and deliver media files stored across the various sub-systems present in the global solution.

2. ETERE SOLUTION: OVERVIEW

Etere’s proposed solution aims to implement a “Media Asset Management and Newsroom integrated system”, this solution will be based in the distributed architecture of Etere, a key characteristic that will permit not only to tightly integrate the hardware current available in the station but also to support future devices integration. The diagram below illustrates how Etere can take control of the various operations that makes part of the entire RBC TV workflow:



The solution proposed by Etere will permit RBC TV with a rock-solid distributed system able to integrate into a single solution the key features of a Media Asset Management system empowered with a Traffic service for commercial assets, plus a tight integration with the Newsroom Computer System used by the station. Additionally, Etere’s solution will permit to straightly connect ingest channels with Etere MAM to browse and edit media assets before their delivery.

Etere’s solution consist of a system intended to be the core of the global system, providing media archive management and delivery services including instant access and delivery of media files.

Operations related to all contents present in the station are cemented on a file-based workflow framework featuring a wide range of function-specific workflows for ingest, production and playout with additional traffic capabilities. The modules that Etere will implement across the system are briefly described below:

- **Etere Ingest**, the flexible solution for capturing contents from a wide range of sources,
- **Etere MTX**, the most advanced, tightly integrated and cost-efficient driver to implement a video server based on the ultimate HD/SD Matrox digital video cards,
- **Etere MAM**, the best solution for indexing and editing a huge amount of media assets, it provides tools for an easier metadata insertion and video cut and merge,
- **Etere MOS Gateway**, a module to create EDL-based video segments and automatically register them as MOS objects that will be instantly available for attachment in a story,
- **Etere Automation**, a fault-tolerant system to automate the playout of scheduled contents,
- **Etere Memory**, the video-logger in charge of recording all broadcasted events from specific time slots in dedicated storage devices,
- **Etere Air Sales**, the traffic system to manage sales and planning of broadcast commercials from the reservation of space and the traffic schedule manipulation to the final invoicing,
- **Etere HSM**, an automatic tape-based storage system for long-term management archive,
- **Etere Media Manager**, the enterprise workflow-based media manager that guarantees timing and effectiveness on media transfers between devices,

An Etere-based media management and news integrated system is able to interface existing systems such as newsroom computer systems and NLE systems, while maintaining the consistence of its wide set of characteristics including:

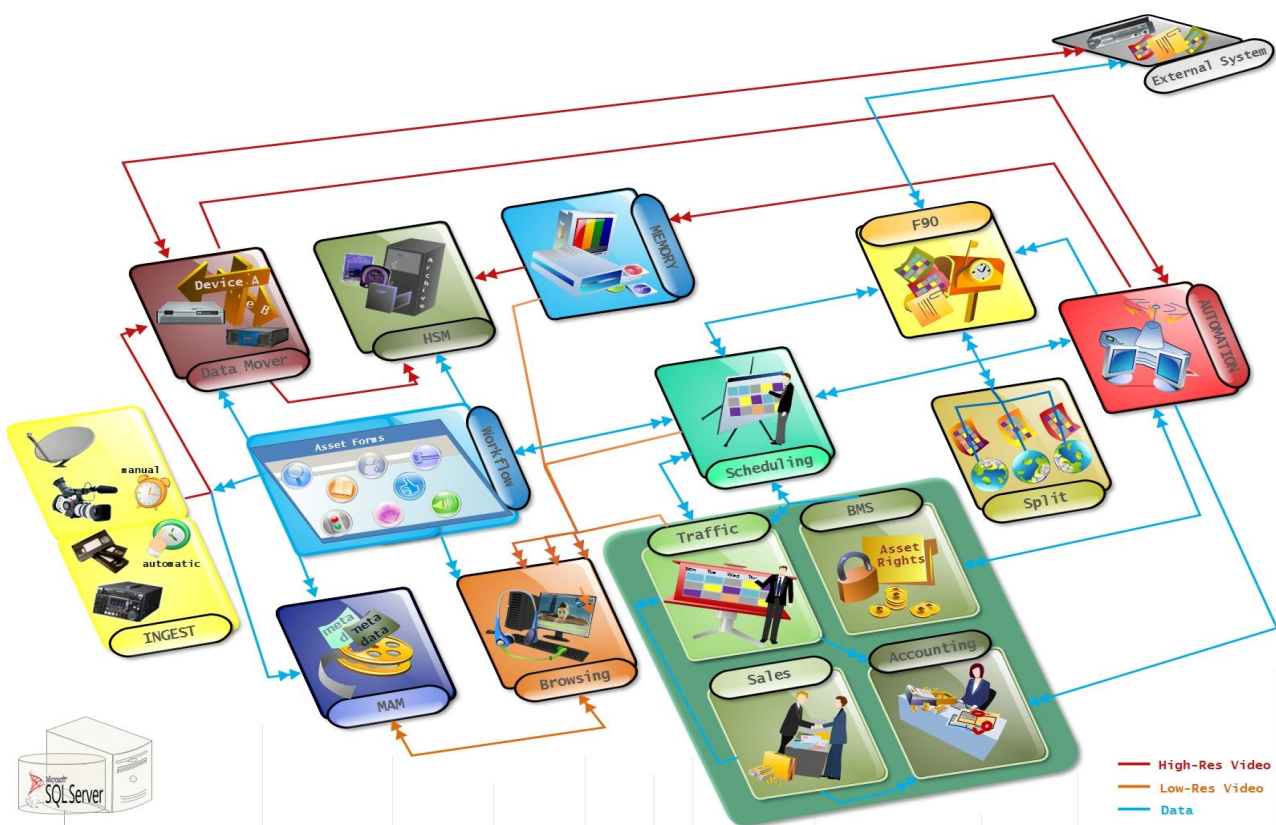
- A distributed architecture managed via workflow to avoid any single point of failure,
- Transparent media transferring, the correct media format will be always delivered,
- Browsing features including preview, slow-motion, timecode, bookmarking and metadata,
- Robust editing functions including video cut, merge, overlay and restore,
- Quality preservation and high availability of archived and catalogued media content,
- Tight integration with Newsroom systems such as ENPS,
- Full integration support for NLE stations, including content uploading/downloading.

3. ETERE SOLUTION: ARCHITECTURE

Etere is based on a distributed architecture which allows different modules to run on different workstations interconnected via a local area network. All system configuration parameters, security roles, user data, and pre-defined rules are stored in a reliable SQL database supporting backup and redundancy operations.

3.1 A Distributed System

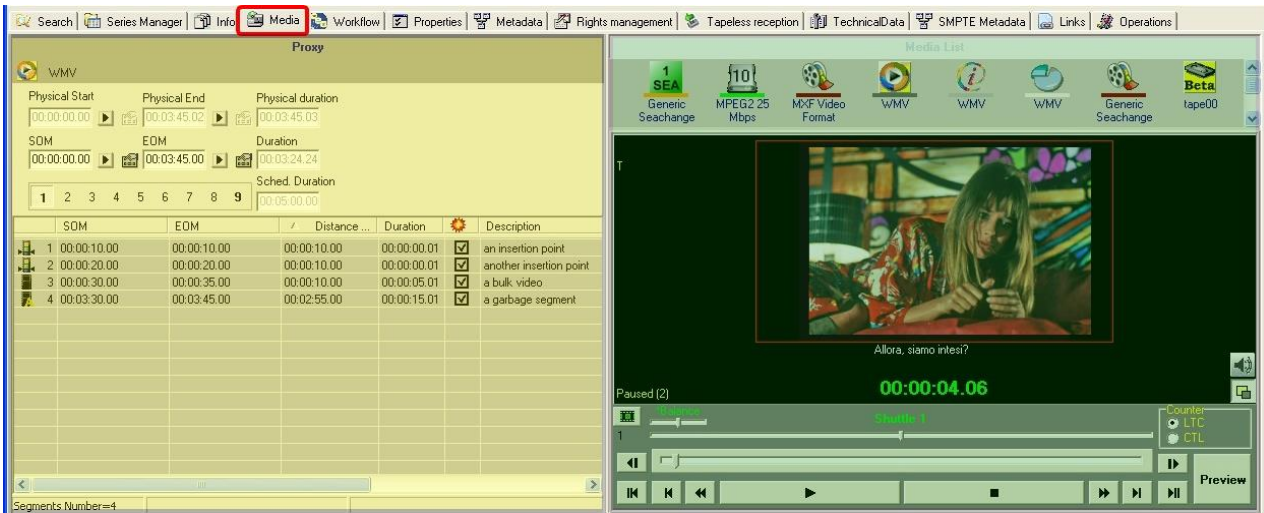
ETERE is a distributed, modular and fully integrated broadcasting system composed by a set of applications specifically oriented to efficiently perform each complex phase of the broadcasting chain synchronously within the same database environment, being all managed by suitable user-defined workflows that ensure an efficient overall system controlling.



Etere's distributed architecture allows achieving a top-level availability of resources and reliability of operations across the entire broadcast workflow thanks to its redundant capabilities to improve the fault resilience on any hardware or software failure.

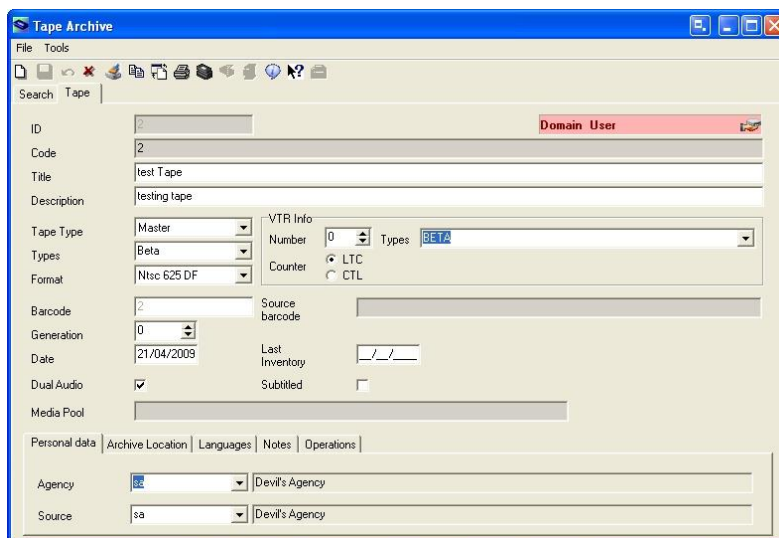
3.2 Multi-level File Access Hierarchy

Etere offers a hierarchical storage management by organizing in user-specific access levels an unlimited number of content versions offering 'instant access' (from video servers), 5 minutes access (from NLE) and 15 min access (from archives), being all these levels available to the operator under a simple and user-friendly interface:



3.3 Tape Library Management

Etere allows stations to carry out the management of tapes (i.e.: video tapes, data tapes, discs, etc) by providing them with a set of modules specifically designed to improve the most important tasks involved in the logical management of tapes:



Etere provides full support for managing tape libraries within the system, being possible to monitor its status and view specific contents in real-time:

1	Media Code	Video Standard	Free space	Used space	Total space	Percentage	Media pool
41	000041	DLT	40.00 GB	0	40.00 GB	0%	HSM Clips (MP_40-49)
39	000034	DLT	40.00 GB	0	40.00 GB	0%	HSM Spots(MP_00-09)
40	000034	DLT	40.00 GB	0	40.00 GB	0%	HSM Clips (MP_30-39)
44	000045	DLT	40.00 GB	0	40.00 GB	0%	HSM Clips (MP_40-49)
45	000040	DLT	40.00 GB	0	40.00 GB	0%	HSM Clips (MP_40-49)
42	000033	DLT	40.00 GB	0	40.00 GB	0%	HSM Spots(MP_00-09)
43	000046	DLT	40.00 GB	0	40.00 GB	0%	HSM Clips (MP_40-49)
42	000033	DLT	40.00 GB	0	40.00 GB	0%	HSM Spots(MP_00-09)

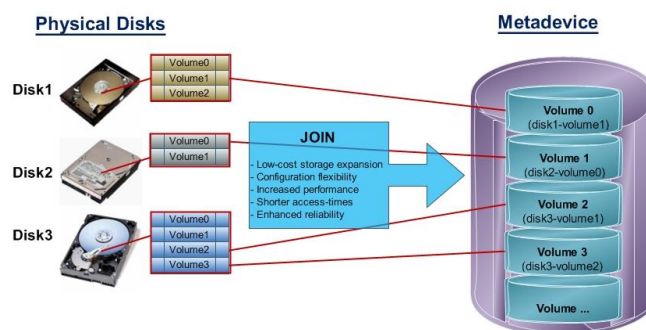
4. ETERE SOLUTION: MEDIA FUNCTIONALITIES

Etere’s solution features an integrated and professional approach based on a workflow management to optimize the station’s entire broadcasting system, reduce operating costs and facilitate overall process control. Etere Workflow permits modules to for example, seek confirmation for sensitive process, follow specific rules, enhance the efficiency and reliability of process, and manage multiple workflows to perform different tasks simultaneously and independently.

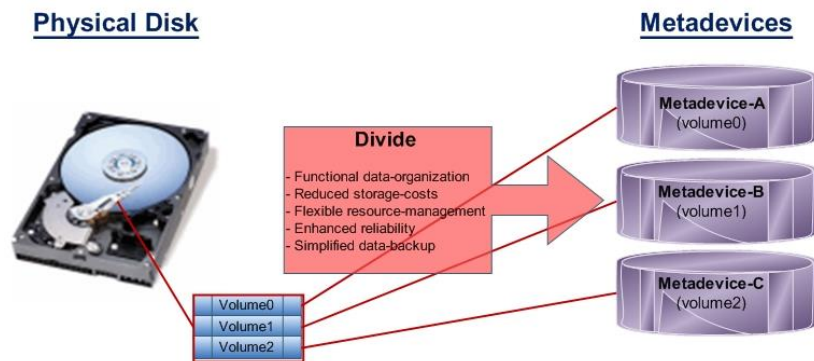
4.1 Multiple Storage Management

Etere reduce the complexity of managing storage devices by arranging physical storage devices present across the system into metadevices (logical devices), the use of metadevices improve the overall media management by offering the following features:

- Automated management via workflow of logical devices including archiving, restoring, transcoding, etc,
- Monitored storage space owing to the set of restrictions,
- Increased storage and better performance since metadevices acts as a virtual device representing several logical disks or disk systems:



- Distributed storage according to specific requirements without the need of creating partitions, just associate individual disk volumes to different:

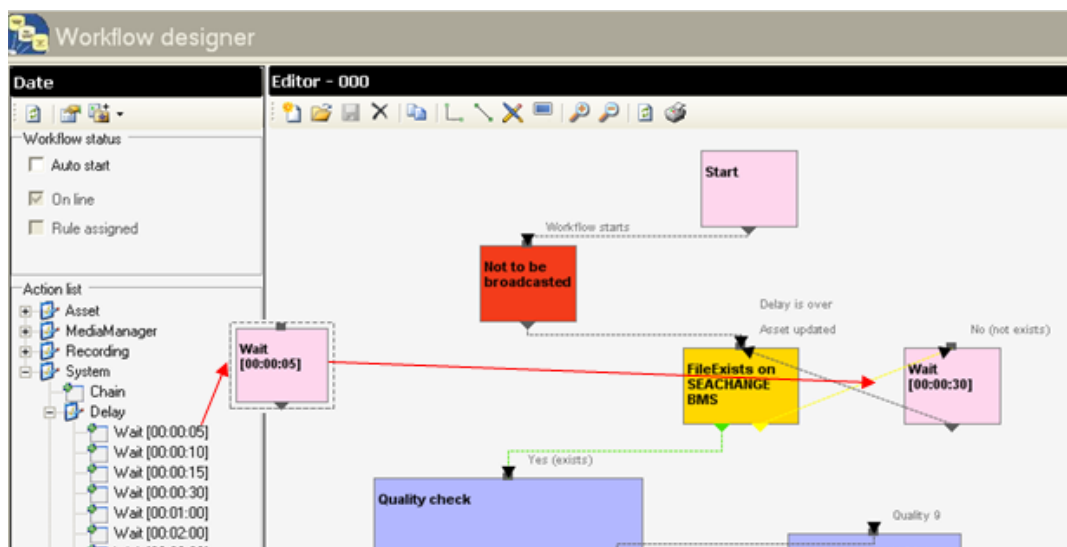


4.2 Custom Design Workflow

All workflows can be customized to fit the real needs of the station and thus give complete control over the overall system management which offers:

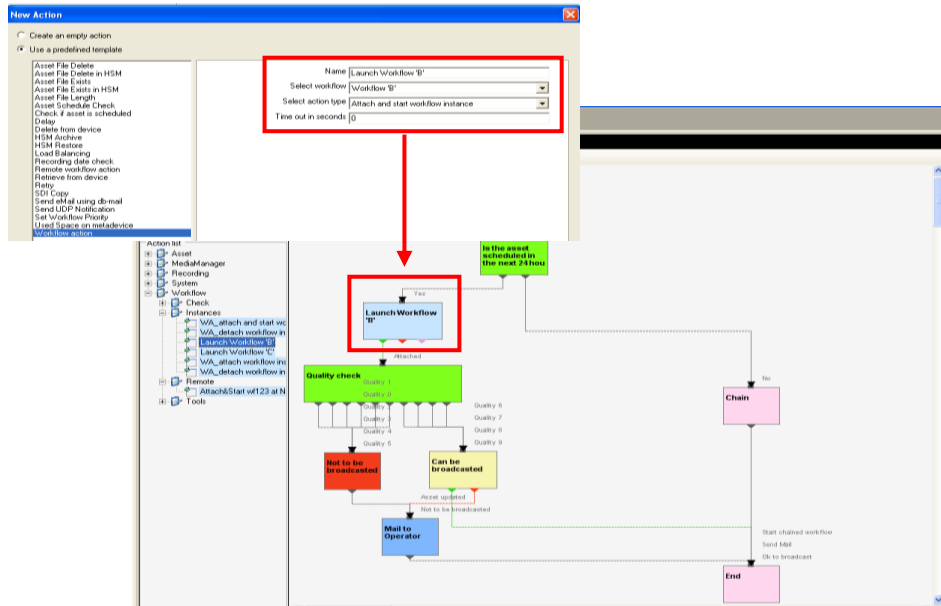
- Clear definition of each complex step of the broadcasting process,
- Visual representation of each step mapped out on a PC not in a paper document,
- Set of instructions and authorizations that must be followed in order to move forward,
- Complete log of all steps carried out, operations denied etc.

A comprehensive and user-friendly workspace allows creating suitable workflows based on custom actions just by dragging and dropping the necessary elements into it:

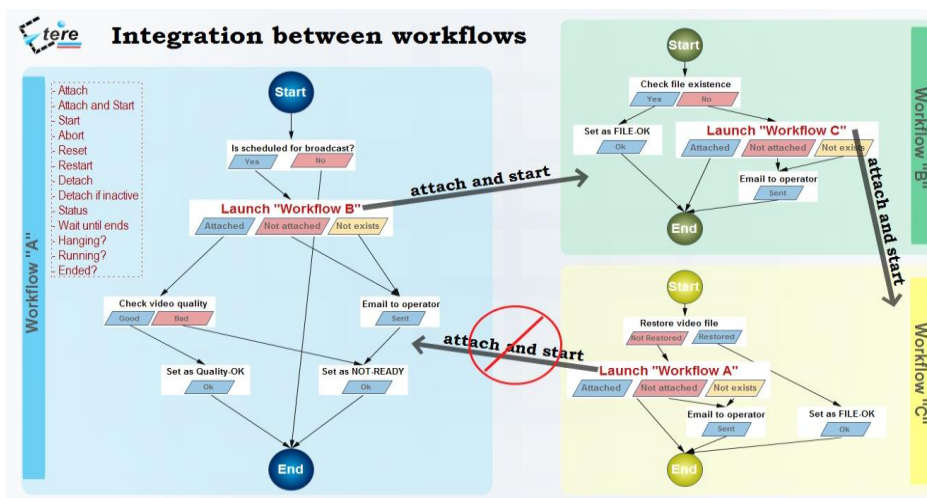


4.3 Integration between workflows

Etere allows calling workflows from others just by inserting an action that can perform a specific task (i.e.: attach, attach and start, start, abort, reset, restart, detach, etc) on a certain workflow:



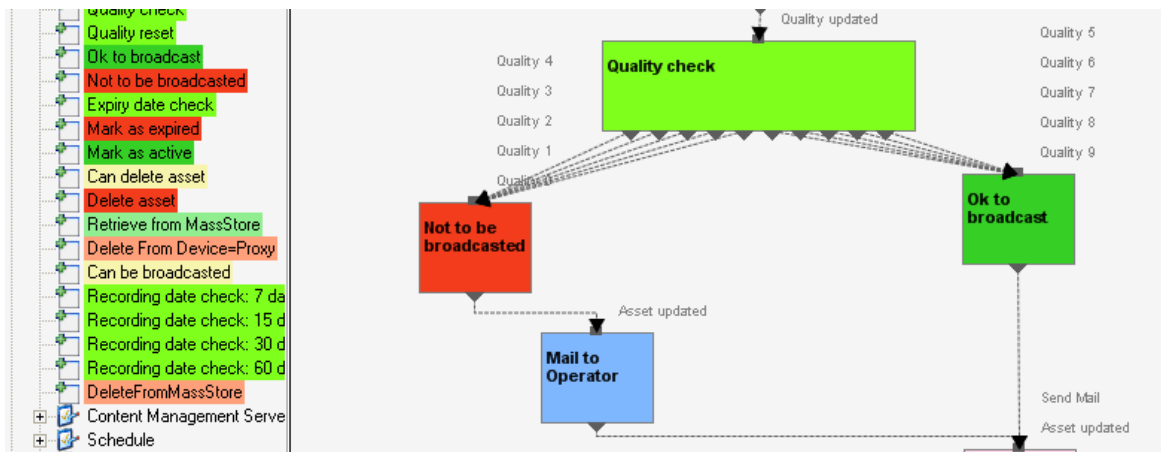
The diagram below illustrates how Etere maintains the system consistency by avoiding loops between workflows (a message is displayed indicating the incompatibility between action and workflow):



As shown above, for example, if 'workflow A' calls 'workflow B' and the 'workflow B' calls 'workflow C', the 'workflow C' will not be able to call the 'Workflow A'.

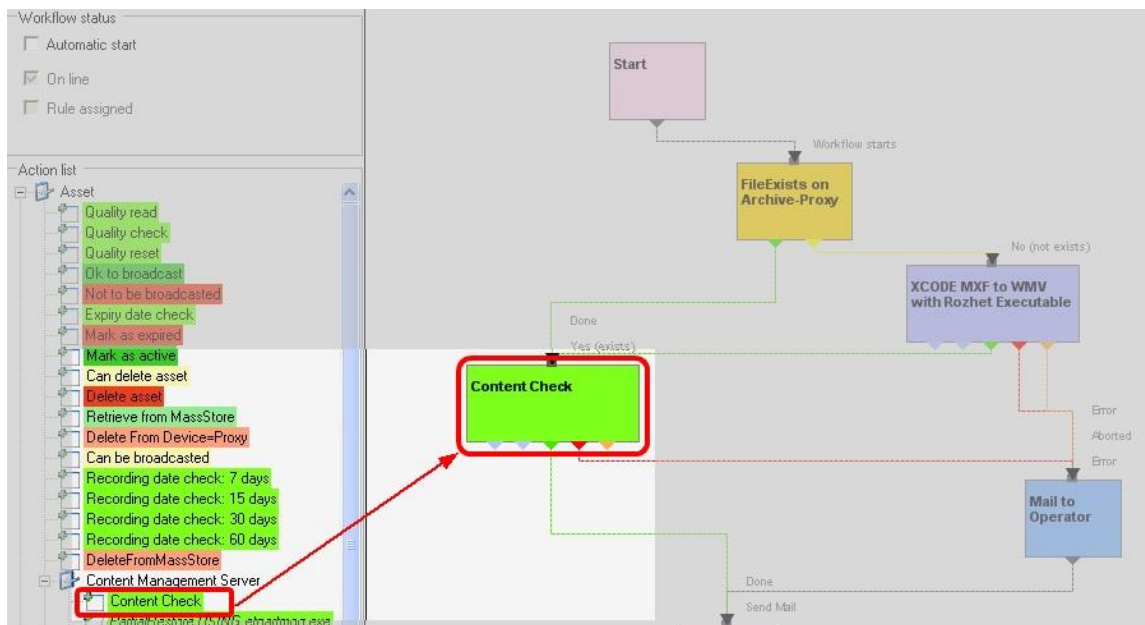
4.4 Video Files Quality check Workflow

An Etere quality check workflow is able to automatically ask operators to assign a quality value to a certain asset(s) after browsing its video content:



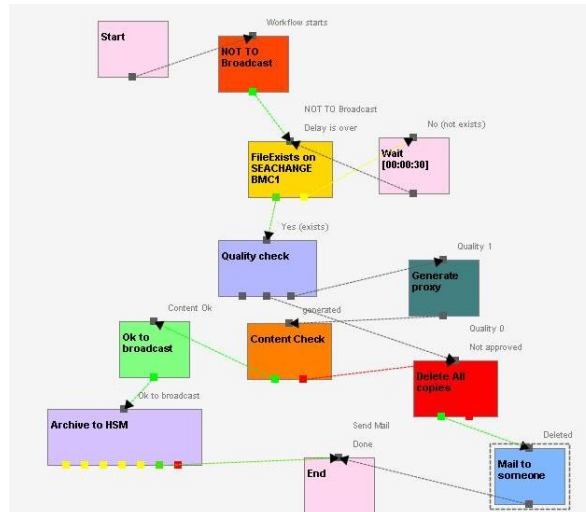
4.5 Video Files Content Check via Workflow

Etere counts with a workflow action called content check, that once inserted into a workflow and attached to an asset, searches on its related proxy video file for defective video issues to subsequently mark (into their EDL list) all encountered defective segments including black scenes, scene changes and freeze video:



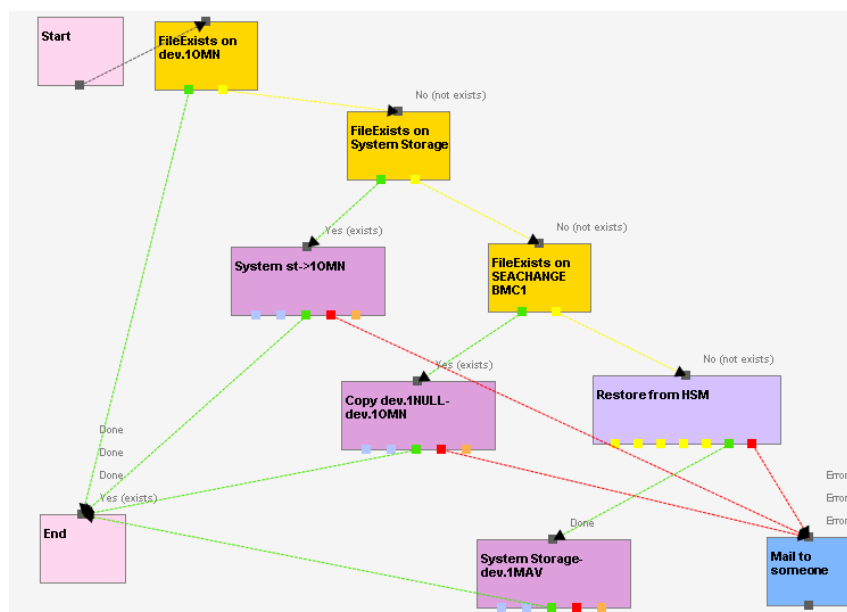
4.6 Video Files Archiving Workflow

Etere allows you to design a workflow for archiving your assets on LTO tapes, including a quality and content check, a proxy copy generation and a final email indicating the result of the process:



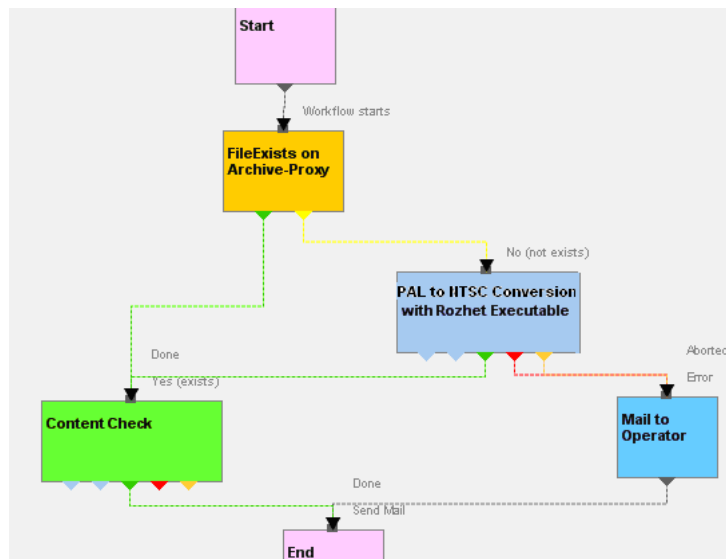
4.7 Video Files Restore Workflow

Create a workflow to automatically restore any scheduled asset for its playout by searching for them amongst a group of devices arranged on basis of their priority:



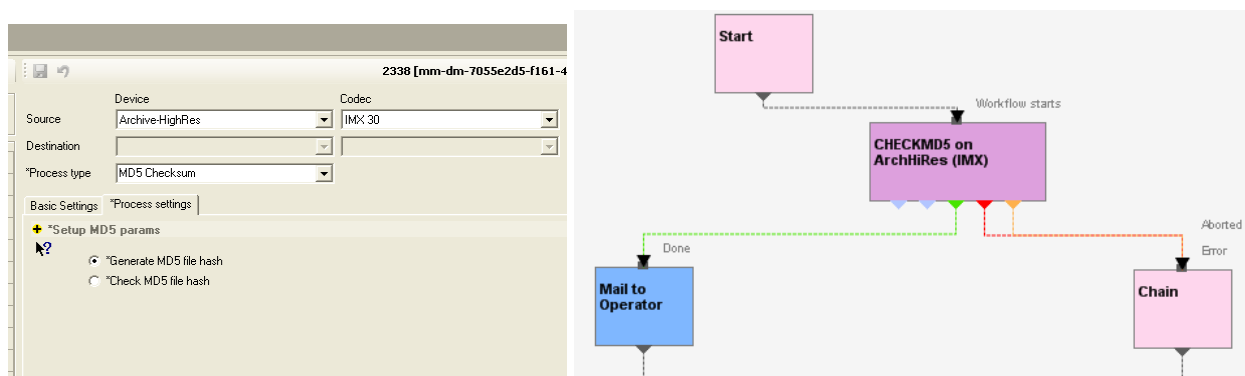
4.8 Video Files Transcoding

Etere's integration with Rhozet's Carbon Coder software handles a wide array of critical operations including format conversions, workflow operations that can be launched for example, immediately after a content capture:



4.9 Video Files Checksum MD5 Verification

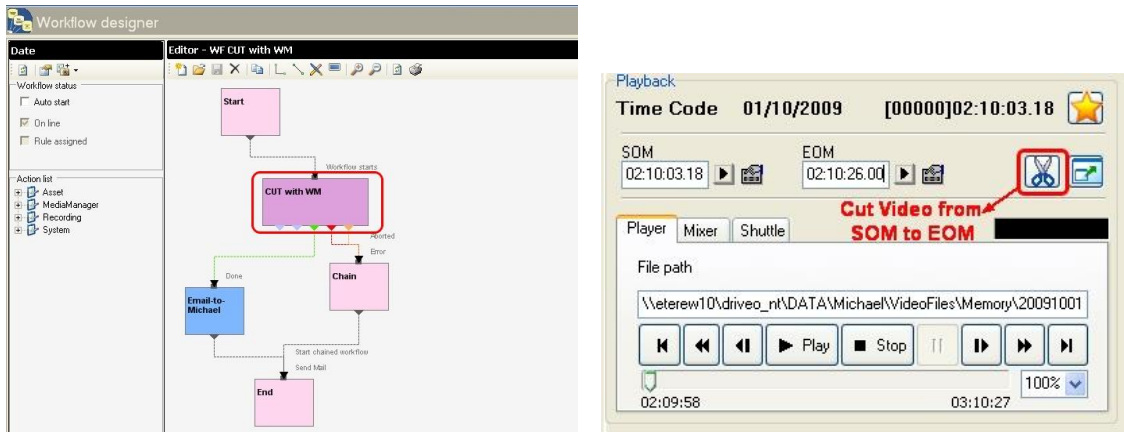
Etere offers an enterprise control of video files integrity; it keeps a log of the hash md5 of video files such in a way that it is possible to verify at any time if they have been modified after their approval. All video files registered on the Etere's database can be verified through an md5 checksum, this control is performed via workflow, each time that a video file is moved from one device to another, its initial hash md5 is calculated to allow a future checking:



The workflow editor allows creating custom Checksum workflows to either generate or check the MD5 hash of a video file.

4.10 Video Files Cut Actions

Etere offers 'Cut actions' that permits to take only a portion of a certain video file, using a given timecode SOM and EOM. Defining and using a Memory Cut operation is as easy as shown below:



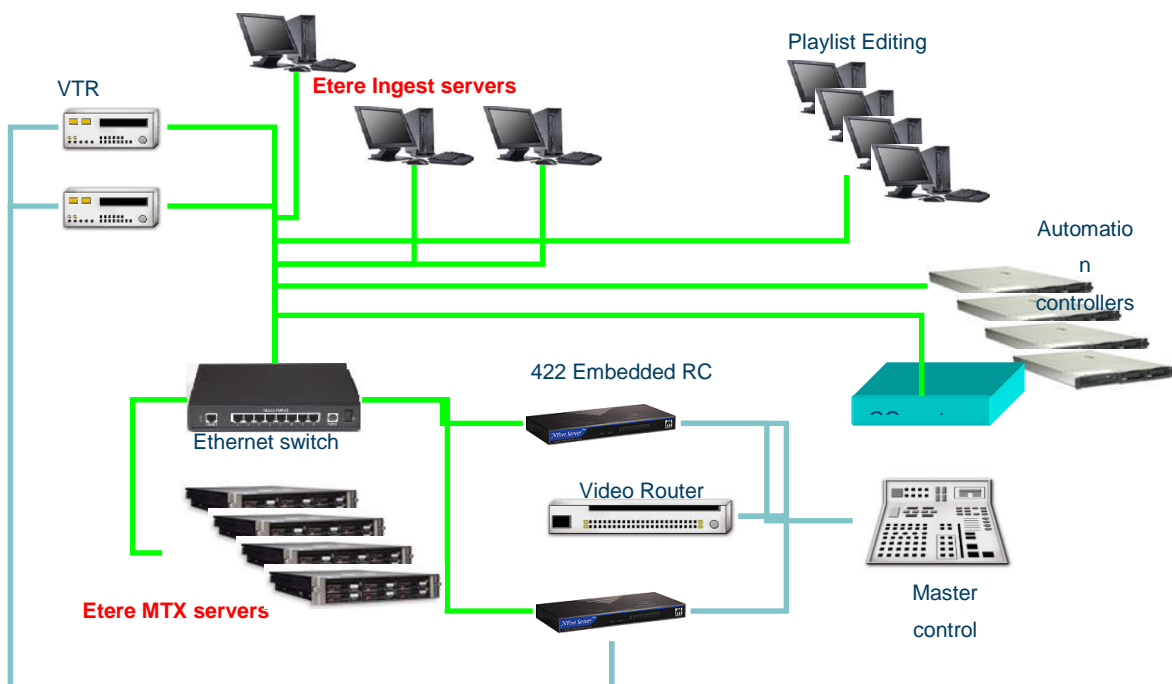
5. ETERE SOLUTION: COMPONENTS

ETERE is an integrated broadcasting solution that implements a modular system formed by a set of modules specifically oriented to cover each complex phase of a broadcasting system, focusing to efficiently carry out specific operations such as media ingest, archiving, transferring, browsing, etc. All these operations are synchronously performed within the same database environment and managed by suitable user-defined workflows that ensure an efficient overall system control; these are some of the main features that make of ETERE a solution that can easily fit any media management workflow.

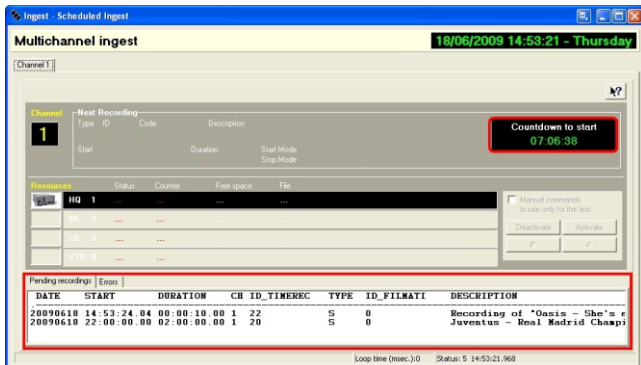
All modules that make part of the Etere's proposed solution will be treated throughout this chapter, explaining how its distributed architecture and integrated complementation are key parts of the success of the global system where a top-level performance and reliability is reached.

5.1 ETERE INGEST: Enterprise Capturing System

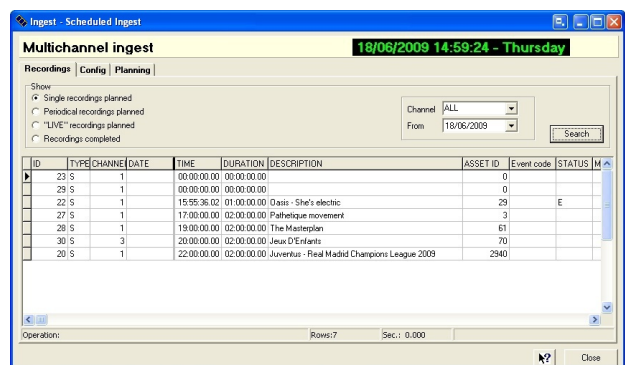
A total of four ingest channels will be implemented across two Etere MTX installations; they will be managed by Etere Ingest:



Etere ingest is a versatile set of modular applications that significantly improves the digitization process inside a broadcasting system, this software covers any particular requirement of the entire process such as automatic and scheduled ingest:



Automatic ingest



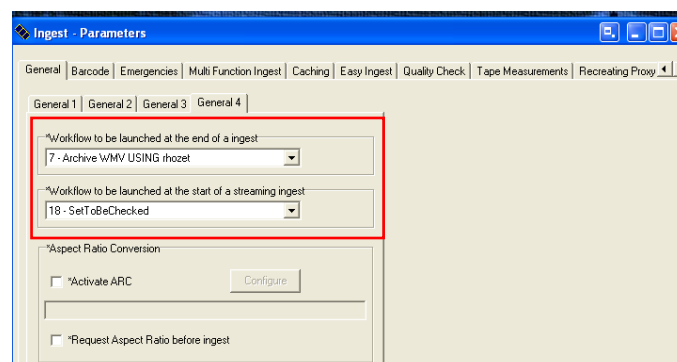
Schedule ingest

Etere Ingest supports multiple parallel ingest streams, managed automatically either on a single workstation or across various workstations, allowing also to schedule the video files to be ingested:

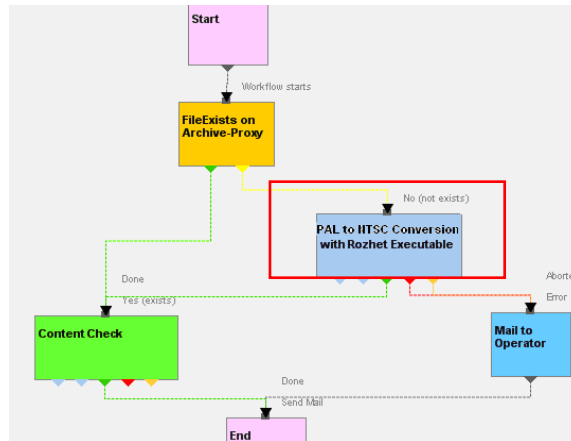


Planning View

Once ingested, video files are transcoded into the specific format of the destination device on which they will be stored, in the same way, video files are transcoded each time they are moved from one device to another (e.g.: archiving, playout, etc):

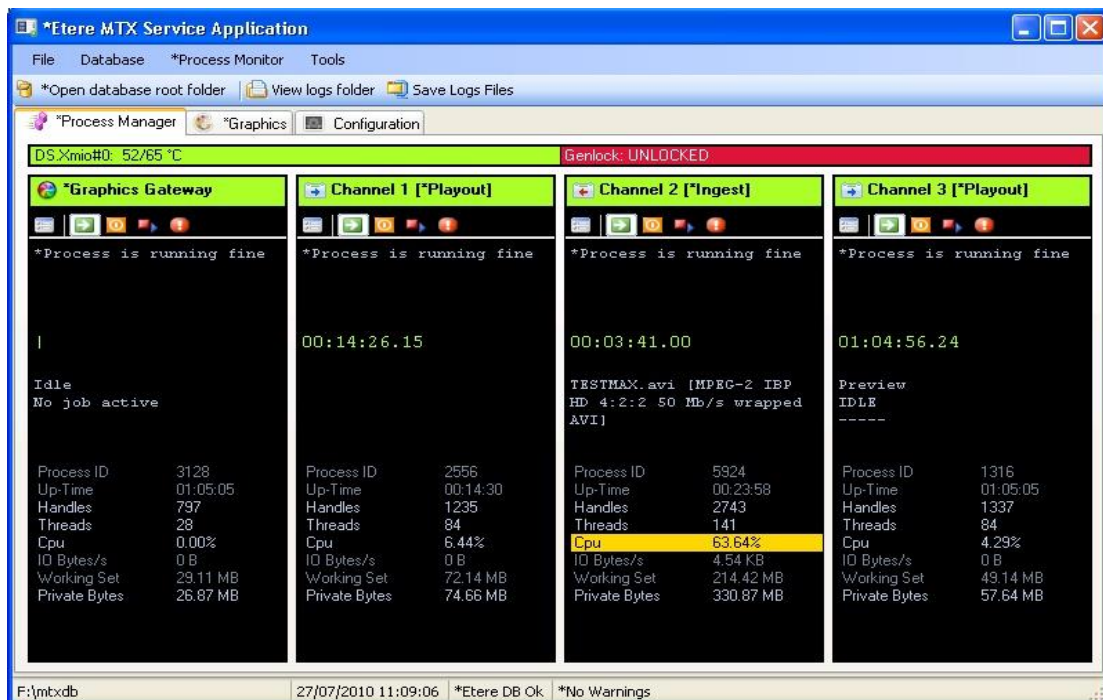


The image below illustrates how Etere allows setting the workflow to be launched at the start and end of an ingest process to for example, **create a low resolution** version or **normalize the audio** of captured contents:



5.2 ETERE MTX: Digital Capture using Matrox Video Cards

Etere MTX is the application offered by Etere to drive the most popular HD/SD Matrox digital video editing platforms, it combines the professional effects technology of a wide range of industry standard codecs with an Etere system, allowing to capture in both high and standard definition formats over digital inputs, mix in real-time all types of footage on a timeline with more layers and/or effects, as well as parallel multi-format ingestions, all these under a user-friendly interface:



The station will be benefited with a real benefit due to an Etere MTX strong, its lower cost, that permits Etere to offer a cutting-edge product to acquire contents through four different channels with an outstanding performance, a complete support and most important, an unbeatable relation between quality and price.

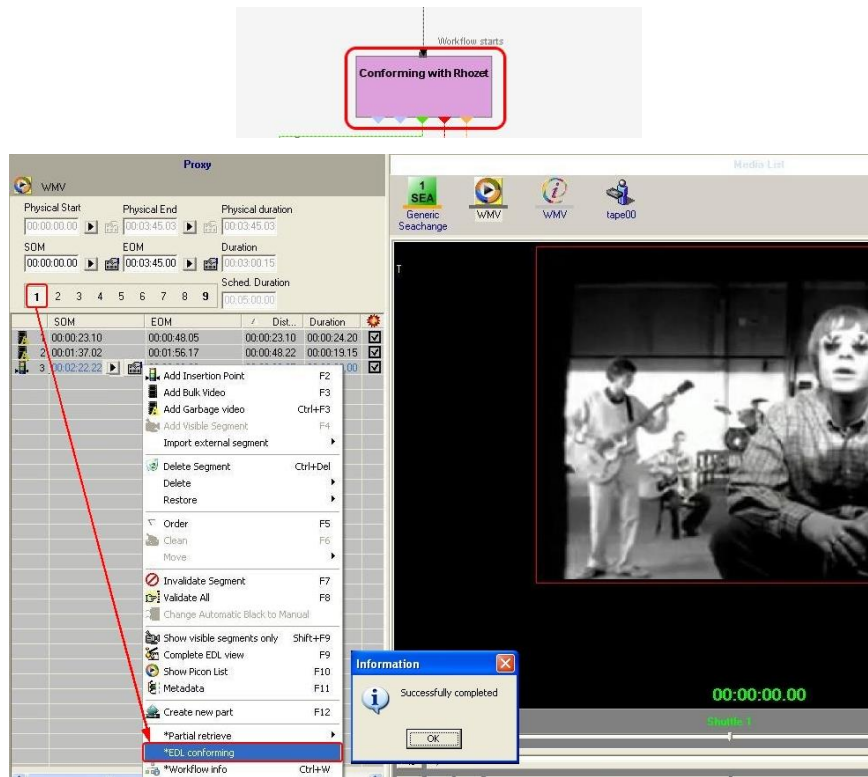
5.3 Etere MAM: Browsing and Editing

Etere MAM will allow RBC TV operators to store information, search media EDL, and transfer EDL-based media to the playout server and the editing systems, all of this, across six different stations featuring either an either English or Russian user interface.

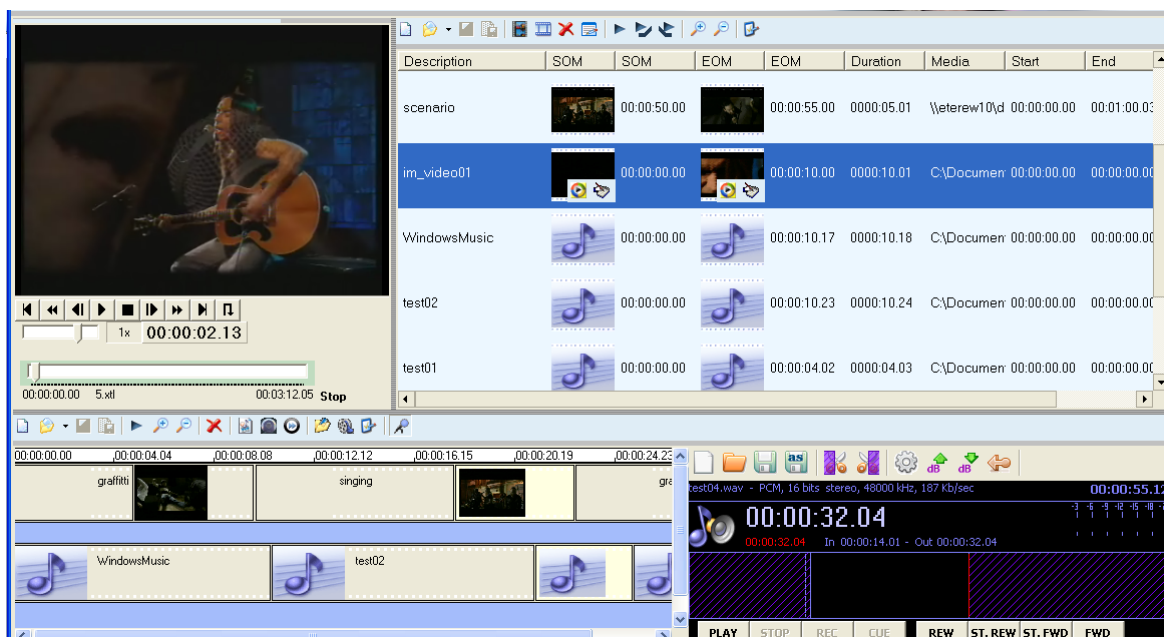
Etere enables comprehensive search and browse and cataloguing of rich media, its very intuitive interface establishes a bridge between the ingest department and the production department, allowing contents to be browsed simultaneously from various workstations thus enabling low-res proxy browsing over the network.



Etere also allows restoring only a part of video files by creating either high or low resolution video files including specific segments described on the source video EDL, it is important to note that as usual on Etere's operations, the conforming of video files is fully performed via workflow:



Etere MAM permits to join cut segments from different sources, to create a single final video file containing all scenes selected by the operator, use this function to for example perform the dubbing of video contents by overlaying an audio track over a video(s):



The image above illustrates the user-friendly interface on which operators creates new video sequences of MAM captions which includes all relevant metadata associated to the inserted scenes.



5.4 ETERE MOS GATEWAY: Newsroom Integration

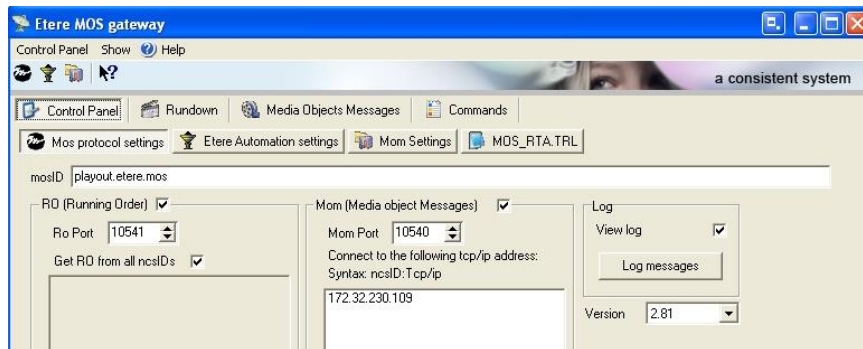
Etere MOS Gateway is the perfect interface between Etere and Newsrooms; it connects to the Newsroom Computer Systems through the MOS protocol (Media Object Server Communications Protocol), allowing the exchange of information between NCS (Newsroom Computer Systems) and Media Object Servers (MOS):



Etere MOS Gateway will provide the station with the following Newsroom features:

- Object Reception and Sending function, that is, it finds assets contained in the video server, creates the corresponding code in the SQL database and sends them – in the object form – to the ENPS system,
- Simple browsing integration to record and view high and low resolution synchronized events. Journalists can readily make their own EDL straight from their PCs,
- Media Asset Management (MAM) provides metadata indexing which lets you retrieve a video or any part of it from the database,
- A Metadata module analyses video and automatically makes metadata entries based on scene changes, black images, no-sounds parts, subtitles, and MXF metadata. Metadata can be edited for any part of the video,
- ActiveX MOS integration allows to preview low quality video directly from the News interface,
- Direct feedback status for events that are cued, ready, playing or missing.

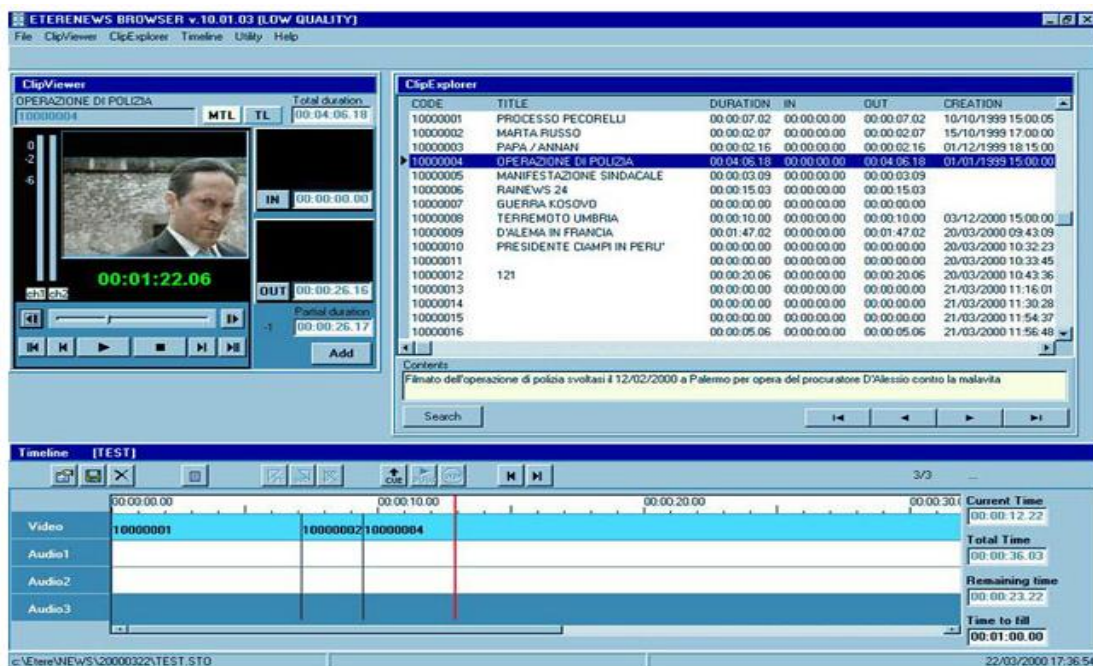
Etere MOS Gateway has been designed to be a robust set of features based on key characteristics such as fault tolerance and user-friendly:



Moreover, it also offers a 'RunDown Reception' function to receive the Run-Down from ENPS, transforms it in a language comprehensible to the Etere system, and then sends it to Etere Automation, responsible for the on-air.

5.4.1 ENPS compatibility

Etere MOS Gateway allows using ENPS client for creating objects in the Etere database, these objects are used for creating Running-Orders that will become part of Etere/ENPS databases, Etere MOS Gateway receives information from ENPS, and transforms this information into a format comprehensible to Etere Automation such in a way that the latter one will be able to send this information on-air:

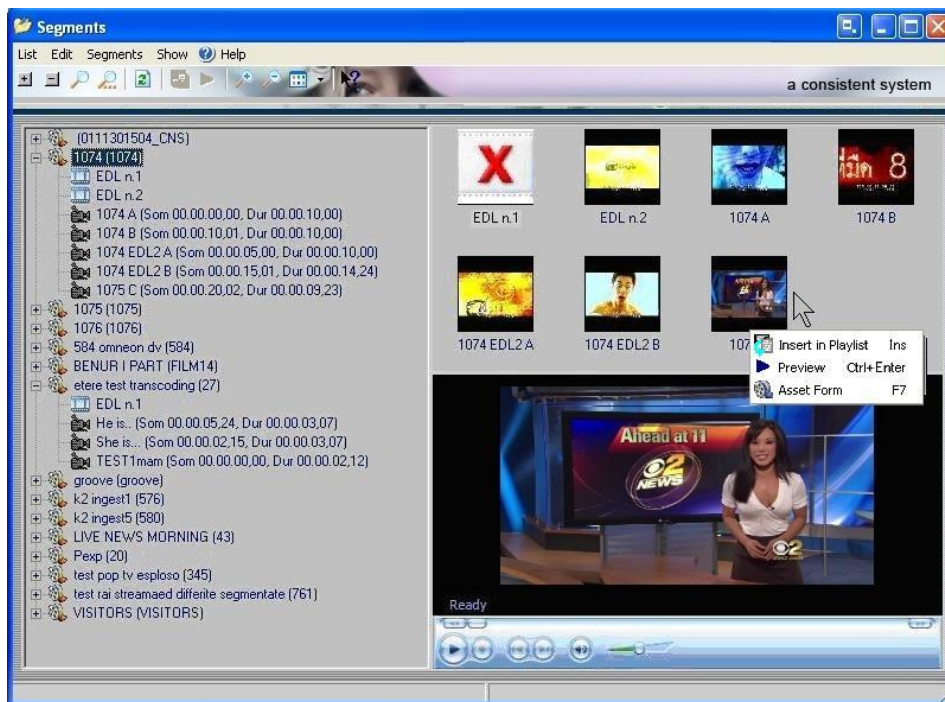


Etere MOS Gateway counts with the following ENPS specific integration functions:

- Etere allows ENPS to dynamically build and control a playlist within the media server, changes to the **Running Order** in ENPS result in immediate changes to the sequence of media objects queued for playout by the media server,
- Etere sends **real-time status information** during playback and other functions which are displayed through ENPS writers and producers in real-time, including a minimum set of standard status messages which enable color coding and the automated movement of the ENPS timing bar,
- Etere provides **thumbnail images** and **proxy video** which are closely integrated within the ENPS Story display and editing windows,
- ENPS users **can create and name placeholders** within the Etere server into which media can later be ingested or recorded. Etere then updates ENPS with duration and other information as the placeholder is replaced with the actual media,
- ENPS users can create and name placeholders within this Etere's media server into which **edited content from an NLE** can be saved,
- Etere enables ENPS users to directly **assign media play-out channels** from the ENPS Running Order,
- Etere uses the full body of text within ENPS documents, including all **media pointers and custom metadata**. Etere also dynamically tracks the **sequence of Stories** and Assignments within active ENPS Running Orders and Assignment grids,
- Etere works with ENPS to **transfer media between machines and locations** using instruction and metadata from ENPS. When stories containing media are moved from one ENPS location in ENPS to another Etere offers the option to automatically transfer the media contained in the stories without further user interaction,
- Etere builds on **MOS Redirection** and can work with ENPS to exchange media files in a variety of formats, working with a variety of other media servers.

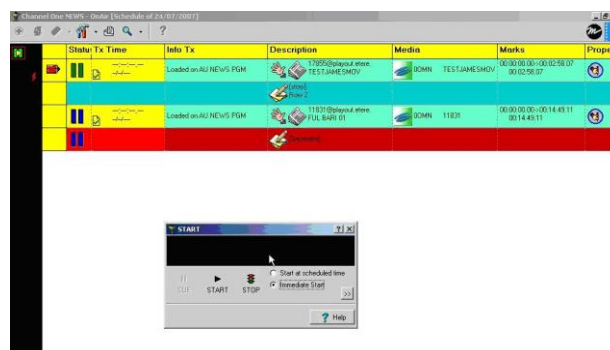
5.4.2 Segments management

Etere Most Gateway provides operators with a module that permits to search all assets with a hi-res media with at least one visible segment, and insert them in the playlist with just one click, being also possible to preview segments before inserting them:



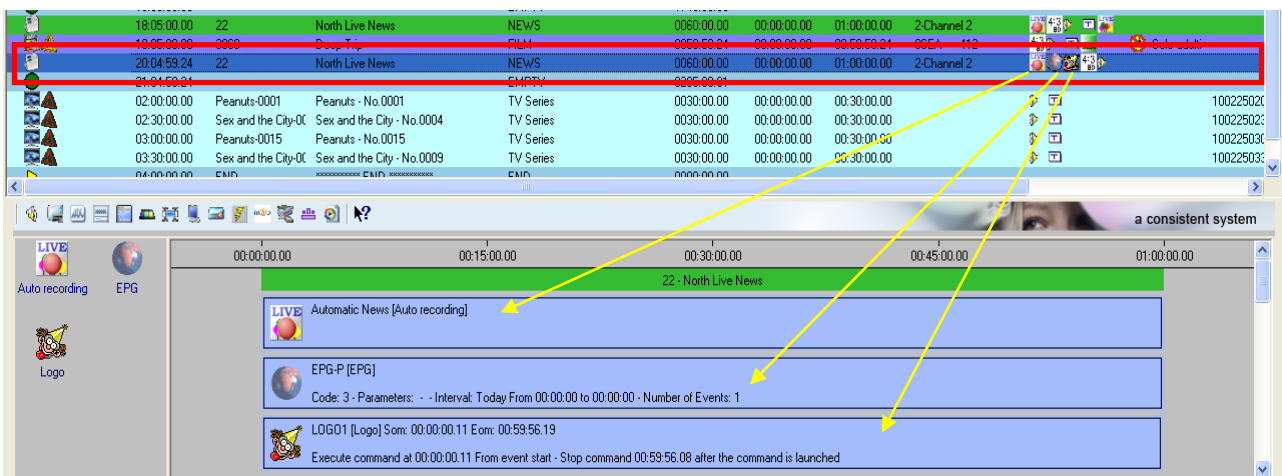
5.4.3 Automation Integration

Etere Automation permits to send on-air events managed by a MOS-based system, in this case Etere Automation will run in “MOS-mode”, loading the playlist corresponding to the Running Orders received, showing information about contained objects and their story name. By using Etere Automation, the operator will only have to initialize the events' cueing process and then start the transmission:



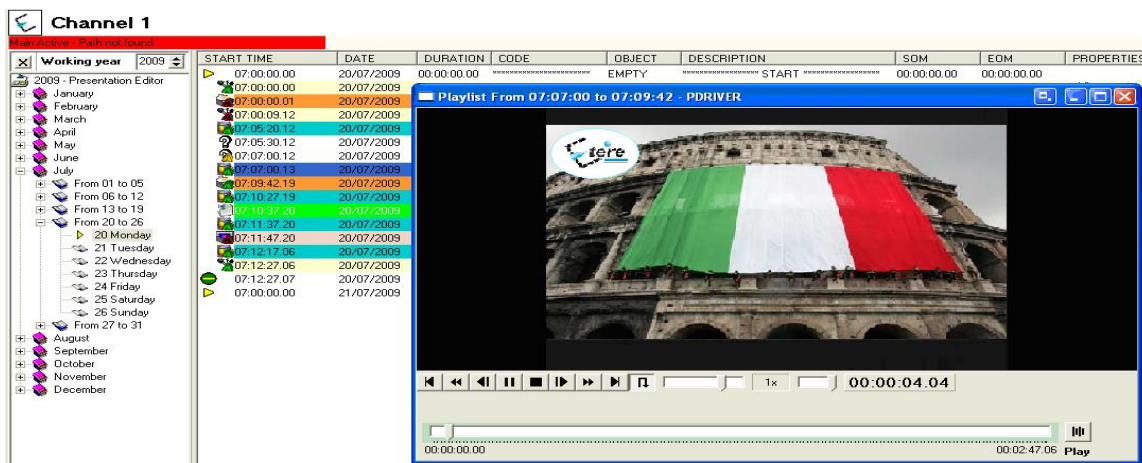
5.5 ETERE AUTOMATION: Payout System

Etere Automation is the powerful, reliable and modular playout system able to enhance the RBC TV potential in terms of functions and workflow design, it is based on a unique approach which combines in a single product real-time device control and media asset management, offering a powerful mix of solutions and capabilities under a graphical user-friendly interface displaying for each event its source, type, description, properties, live status, secondary events, time code, GPI status, scheduled and real times, etc:



5.5.1 Secondary Events Management

Etere Automation manages all the secondary events intended to be transmitted by dedicated devices (e.g.: Logo Generators, Crawl Generators, Subtitlers, etc) with a simple graphical tool, allowing previewing secondary events in low res before their playout through a browsing application:

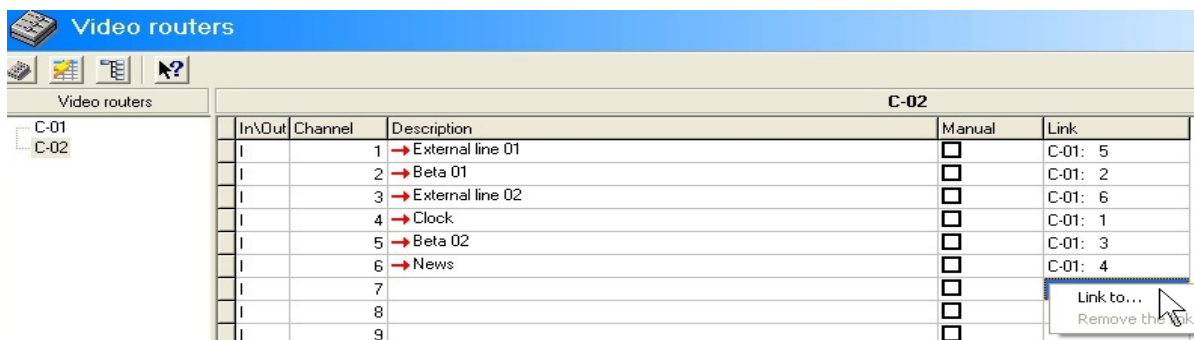


5.5.2 Live Events Management

Etere Automation offers complete support for live events present on the daily schedule, being possible to manage various different live inputs that can be switched at any time, few minutes before the event broadcasting or even during its transmission:



Additionally, Etere allows managing one video router per automation, being possible to create links between routers so when a channel is switched in the Main Router; the equivalent channel is also switched in the Backup Router:



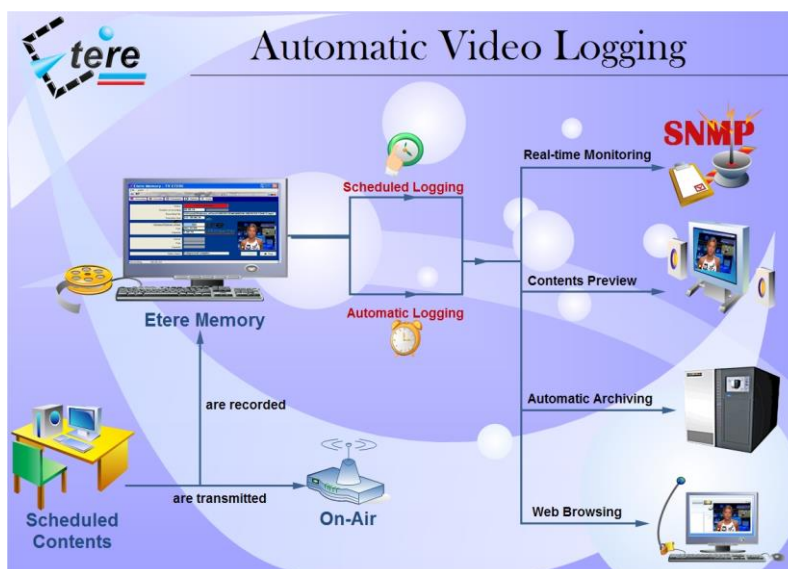
5.5.3 As-Run Logging

Moreover, the ability to export As-Run logs containing the schedule “actually” transmitted allows an easy reconciliation between planned and real playout, being possible to send to multiple (UNC and FTP) destinations a frame-accurate log in any of the available formats:

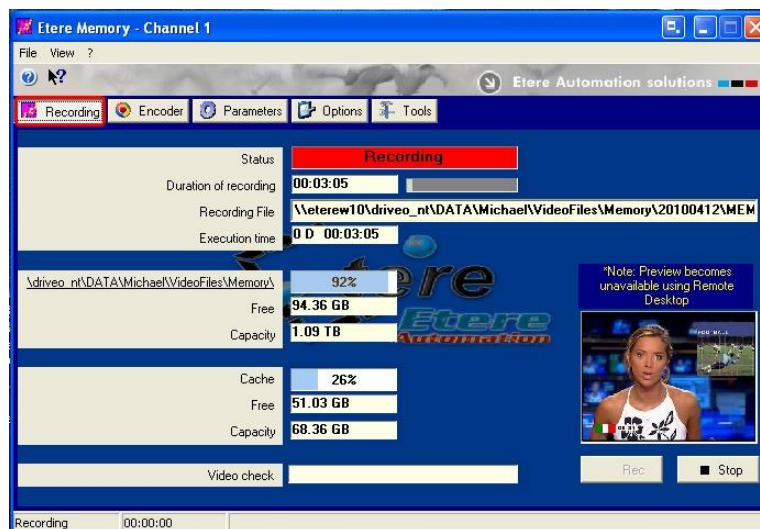
```
[ - ] 04/28 15:09:20.593 | [Log Started
[ APP ] [2010-04-28 15:09:20.21 AUTOMATION RESET
[ APP ] [2010-04-28 15:10:31.05 AUTOMATION IS ONAIR
[ CLIP ] [2010-04-28 15:10:30.17Y, 210136785149, 22 , 0LIVE00000 , Live News , F, 00:00:00.00, 00:59:59.24, 01:00:00.00
[ CLIP ] [2010-04-28 16:10:01.19Y, 210135546001, 28 , 0MCL CBBot , B-Bottles , F, 00:00:00.00, 00:00:08.18, 00:00:08.19
[ CLIP ] [2010-04-28 16:17:03.21Y, 210136107001, 70 , 0MCL JeuxD , Jeux D'E , T, 00:00:00.00, 00:30:00.00, 00:30:00.01
[ CLIP ] [2010-04-28 16:47:08.02Y, 100000008996, 3 , 0MCL PathMov, PathMov , T, 00:00:00.00, 00:08:12.24, 00:08:13.00
[ APP ] [2010-04-28 16.48.13.20PLAYOUT COMMAND: STILL
[ APP ] [2010-04-28 16.48.14.19PLAYOUT COMMAND: RESTART_FROM_CURRENT
[ APP ] [2010-04-28 16.48.20.07PLAYOUT COMMAND: STILL
[ APP ] [2010-04-28 16.48.23.01PLAYOUT COMMAND: RESTART_FROM_NEXT
[ CLIP ] [2010-04-28 16:48:23.01Y, 100000008998, 32 , 0MCL Minuet , Minuet , T, 00:00:00.00, 00:11:10.24, 00:11:11.00
[ CLIP ] [2010-04-28 16:52:12.06Y, 100000009000, 33 , 0MCL Prima , Primavera , T, 00:00:00.00, 00:09:19.24, 00:09:20.00
[ CLIP ] [2010-04-28 16:54:13.12Y, 100000009003, 49 , 0MCL Vivace , Vivace , T, 00:00:00.00, 00:04:59.24, 00:05:00.00
[ APP ] [2010-04-28 16:55:16.11PLAYOUT COMMAND: SKIP
[ CLIP ] [2010-04-28 16:55:16.11Y, 100000009005, 51 , 0MCL OdeJ , Ode Joy , T, 00:00:00.00, 00:04:59.24, 00:05:00.00
[ CLIP ] [2010-04-28 16:57:46.19Y, 100000018164, 12 , 0LIVE00001 , Melody01 , T, 00.00.00.00, 00.00.14.24, 00.00.14.15
[ APP ] [2010-04-28 16.59.53.01PLAYOUT COMMAND: EMERGENCY_LIVE_START
[ APP ] [2010-04-28 17.05.57.05PLAYOUT COMMAND: EMERGENCY_LIVE_END
[ APP ] [2010-04-28 17:15:35.06AUTOMATION STOP
Log Closed
```

5.6 ETERE MEMORY: Automatic Video Logger

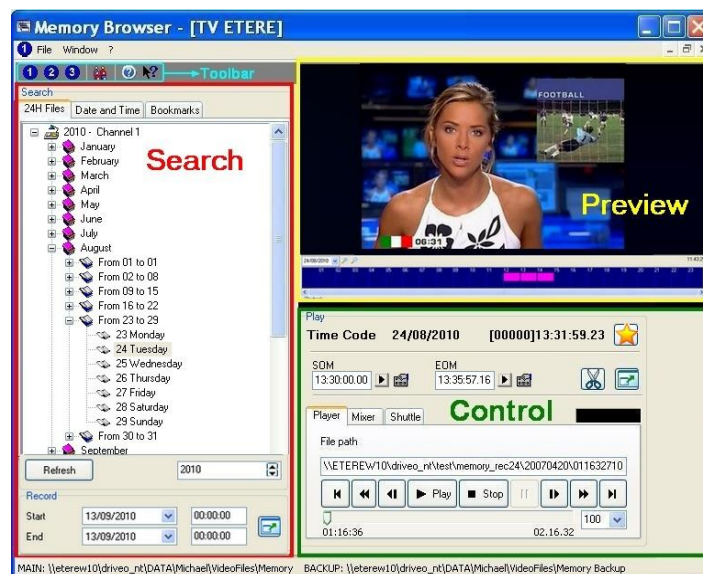
Etere Memory is the module that automatically captures an audio/video copy of all specified broadcasted events. The interface is user friendly and provides information about the current recorded file size and the remaining free hard disk space. It is a video logging system, automatic and easy to use, effective in reducing expensive tape:



The recording interface can be either manually or automatically started and it will display a preview of the currently recording event, detailing some important recording information such as status, duration, storage path, occupied memory, cache status, etc:



Etere Memory counts with a browsing interface with powerful capabilities to turn a selected video into a sub-clip, inserting the Time-code and sending the video or part of it to standard Microsoft OS users:



Etere Memory allows recording and viewing clips at the same time with just a few frames of delay while offering the following key features:

- Audience integration: if Etere Memory is used to record competitors' transmissions, you can have a chart audience wizard related to the recorded video in order to understand better your competitors' audience composition,

- Media Manager integration: is meant for both local or network video clip storage in order to prevent system faults and to avoid data loss. The integration provides full file maintenance with storage and periodical deletion,
- SNMP alarms, Etere Memory detects loss of video, black video, or frozen video and alerts using SNMP messages. These alarms can be converted by Etere SNMP console in acoustic, email or Sms,
- Streaming capabilities. Using Etere Memory you can view the video on the network. This feature is very important if you wish to distribute the video and you don't have a video cabling infrastructure.

5.7 ETERE AIR SALES: Commercial Traffic Management

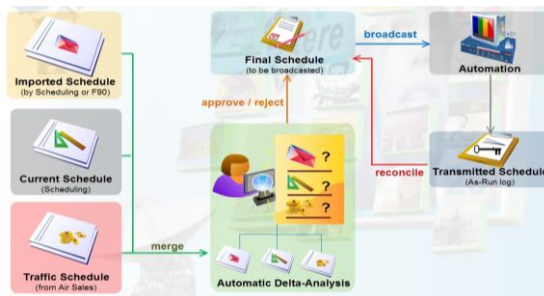
Etere Air Sales is a complete, modular and scalable traffic system for the management of the planning and commercial processes of a broadcaster. From planning to playout, it provides specialist application modules to manage sales, planning, presentation, scheduling and invoicing of commercial contents. Etere Air Sales optimized commercial broadcasting thanks to its flexibility to fit any-broadcaster needs, all in the most cost effective and modular manner:



Etere Air Sales takes care of one of the most delicate process of the broadcast chain, it offers a fully integrated management of daily schedules, and this application is greatly composed by various simple applications that those who draw up the daily schedule will appreciate:



Etere Air Sales also provides operators with a simple graphical module to view, analyze and approve changes (i.e.: traffic, imported, and corrected programs) between the current schedules and any imported schedule. When the current schedule has incoming changes, the operator is advised through a prompt-message which announces that new changes to be approved are available:



Code	Description	Type	Scheduled time	Source	Cluster Sort	Field	Change	Schedule
28	Blank Bottles 2009-N	COMMERCIALS	06:00	TRAFFIC_NEW	12	Code	Peanuts-0001	
22	North Live News	NEWS	06:05	TRAFFIC_NEW	12	Description	Peanuts - No 0001	
3082	Bee-Beer Advert 2010H	COMMERCIALS	07:00	TRAFFIC_NEW	12	Type	TV Series	
3084	Testing Advertising Comerci	COMMERCIALS	08:00	TRAFFIC_NEW	12	Duration	00:30:00	
3087	Sway Phone Commercial 2010	COMMERCIALS	09:00	TRAFFIC_NEW	12	File name	SD_4_3	
70	Jeux D'Enfants	FILM	09:05	TRAFFIC_NEW	12	Asset ID	2988	
41	XYZ Running Shoes 2009	COMMERCIALS	10:00	TRAFFIC_NEW	12	Scheduled date	26/02/2010	
3087	Sway Phone Commercial 2010	COMMERCIALS	11:00	TRAFFIC_NEW	12	Scheduled time	02:00	
28	Sex and the City-0002	TV Series	11:05	TRAFFIC_NEW	12			
28	Blank Bottles 2009-N	COMMERCIALS	12:00	TRAFFIC_NEW	12			
87	NATIONAL Live News	NEWS	12:05	TRAFFIC_NEW	12			
3082	Bee-Beer Advert 2010H	COMMERCIALS	13:00	TRAFFIC_NEW	12			
3084	Testing Advertising Comerci	COMMERCIALS	14:00	TRAFFIC_NEW	12			
3082	Sway Phone Commercial 2010	COMMERCIALS	15:00	TRAFFIC_NEW	12			
3087	Peanuts-0016	TV Series	15:05	TRAFFIC_NEW	12			
41	XYZ Running Shoes 2009	COMMERCIALS	16:00	TRAFFIC_NEW	12			
28	Sex and the City-0021	TV Series	16:05	TRAFFIC_NEW	12			
28	Blank Bottles 2009-N	COMMERCIALS	17:00	TRAFFIC_NEW	12			
3082	Bee-Beer Advert 2010H	COMMERCIALS	18:00	TRAFFIC_NEW	12			
22	North Live News	NEWS	18:05	TRAFFIC_NEW	12			
3084	Testing Advertising Comerci	COMMERCIALS	19:00	TRAFFIC_NEW	12			
3087	Sway Phone Commercial 2010	COMMERCIALS	20:00	TRAFFIC_NEW	12			
41	XYZ Running Shoes 2009	COMMERCIALS	21:00	TRAFFIC_NEW	12			
28	Blank Bottles 2009-N	COMMERCIALS	22:00	TRAFFIC_NEW	12			
3082	Bee-Beer Advert 2010H	COMMERCIALS	23:00	TRAFFIC_NEW	12			
3088	Deep Trip	FILM	23:05	TRAFFIC_NEW	12			
3084	Testing Advertising Comerci	COMMERCIALS	00:00	TRAFFIC_NEW	12			
3087	Sway Phone Commercial 2010	COMMERCIALS	01:00	TRAFFIC_NEW	12			
3087	Peanuts-0001	TV Series	02:00	IMPORTGENERIC	12			
41	XYZ Running Shoes 2009	COMMERCIALS	02:00	TRAFFIC_NEW	12			
28	Sex and the City-0004	TV Series	02:30	IMPORTGENERIC	12			
28	Peanuts-0015	TV Series	03:00	IMPORTGENERIC	12			
28	Sex and the City-0005	TV Series	03:30	IMPORTGENERIC	12			

This simple interface allows the operator to easily identify the source from which changes have arrived and then decide to either approve or reject them though a simple selection process.

5.8 ETERE HSM: A Tape Based Archiving

LTO tape libraries present in the station will be managed by Etere HSM, the cost-effective solution to radically streamline the management of expensive tape libraries; allowing stations to optimize the migration of contents including high and low versions as well as associated metadata.

Etere HSM improves the management of libraries by controlling their mechanical movements through the HSM Robotics Control and HSM Data Pump applications, which are able to run several data pumps on different machines to boost their throughput, while offering access to real-time logs, reports and statistics.

Type	Media Pool	Video	Library	Slot	Drive	Used	Test	Free space	Used Space
DLT	Offline					X		37.81 GB	485.81 MB
DLT	SERVER2003QUALSTAR TLS 6460			42				40.00 GB	
DLT	SERVER2003QUALSTAR TLS 6460			33				40.00 GB	
DLT	SERVER2003QUALSTAR TLS 6460			17				40.00 GB	
DLT	SERVER2003QUALSTAR TLS 6460			46				40.00 GB	
DLT	SERVER2003QUALSTAR TLS 6460			34	X			11.79 GB	24.11 GB
DLT	SERVER2003QUALSTAR TLS 6460			24		X		37.85 GB	136.47 MB
DLT	SERVER2003QUALSTAR TLS 6460			19				40.00 GB	
DLT	SERVER2003QUALSTAR TLS 6460			16				40.00 GB	
DLT	SERVER2003QUALSTAR TLS 6460			26				40.00 GB	
DLT	SERVER2003QUALSTAR TLS 6460			1				40.00 GB	
DLT	SERVER2003QUALSTAR TLS 6460			35				40.00 GB	
DLT	SERVER2003QUALSTAR TLS 6460			7				40.00 GB	
DLT	SERVER2003QUALSTAR TLS 6460			8	X			35.88 GB	1.66 GB
DLT	SERVER2003QUALSTAR TLS 6460			54				40.00 GB	
DLT	SERVER2003QUALSTAR TLS 6460			21				40.00 GB	
DLT	SERVER2003QUALSTAR TLS 6460			58				40.00 GB	
DLT	SERVER2003QUALSTAR TLS 6460			15	X			37.66 GB	394.29 MB
DLT	SERVER2003QUALSTAR TLS 6460			20				40.00 GB	
DLT	SERVER2003QUALSTAR TLS 6460			28				40.00 GB	
DLT	SERVER2003QUALSTAR TLS 6460			38				40.00 GB	
DLT	SERVER2003QUALSTAR TLS 6460			51				40.00 GB	
DLT	SERVER2003QUALSTAR TLS 6460			31				40.00 GB	
DLT	Offline							40.00 GB	
DLT	SERVER2003QUALSTAR TLS 6460			49				40.00 GB	
DLT	SERVER2003QUALSTAR TLS 6460			18	X			34.59 GB	2.92 GB
DLT	SERVER2003QUALSTAR TLS 6460			22	X			30.30 GB	7.82 GB
DLT	SERVER2003QUALSTAR TLS 6460			23	X			37.85 GB	209.59 MB
DLT	SERVER2003QUALSTAR TLS 6460			32	X			21.61 GB	15.59 GB
DLT	SERVER2003QUALSTAR TLS 6460			50	X			38.02 GB	37.14 MB
DLT	SERVER2003QUALSTAR TLS 6460			27				40.00 GB	

Etere HSM distinguish four different archiving levels into a broadcasting workflow, these levels required distinct access times which vary from 0 minutes (video server) to 15 minutes (standard video tapes).

All these levels are managed “virtually”, that is, you can use logical devices (metadevices) based on physical devices to free design your storage layout, enriching in this way the entire system with the benefits derived from the use of metadevices:

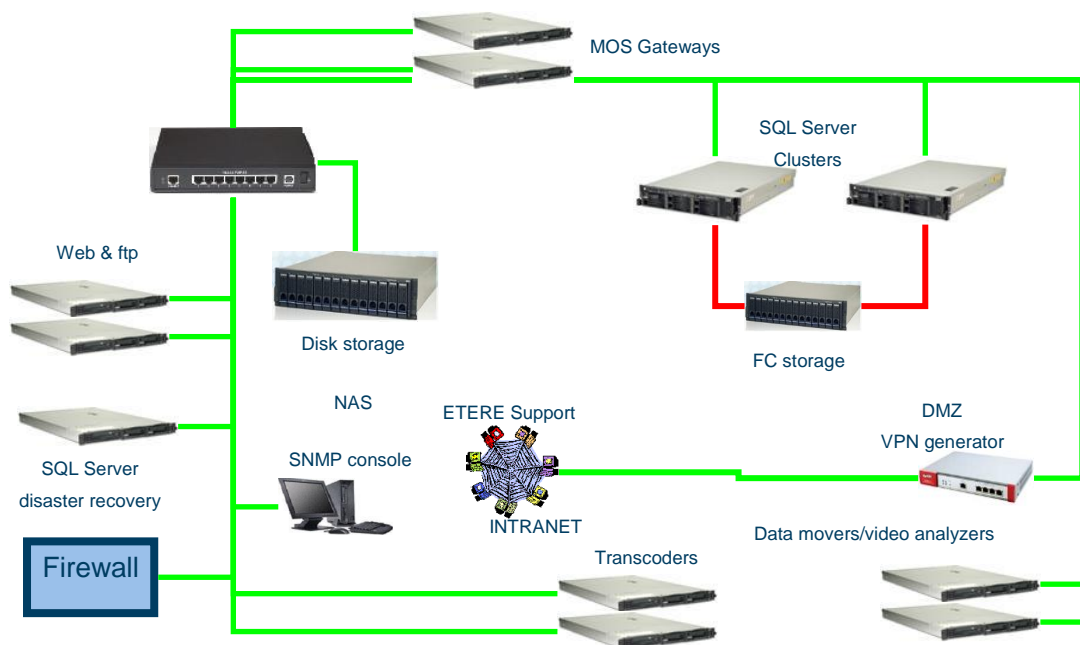
- Carry out loan-balanced movements on an intelligent multi-volume scenario,
- Extend your storage space by joining physical devices into one metadevice, without altering the archiving workflow,
- Categorize your storage devices by dividing them into metadevices with no partitioning required,
- Space limits and storage distribution are defined by the user and not by devices itself,

- Classify metadevices in media pools in order to automate their management,
- Background defragmentation and online/offline tape management,
- Scheduled archiving of devices, media contents and entire databases.

Etere HSM forms a tandem with Etere Data Mover to be the only solution in the market with an embedded multi-level and multi-rule cache that offers an intelligent management which ensures the best performances with low investments. Owing to Etere's comprehensive character, these applications are perfectly integrated with other modules (e.g.: Ingest, EtereWeb, etc) to allow all these modules to use shared resources and have unlimited communication.

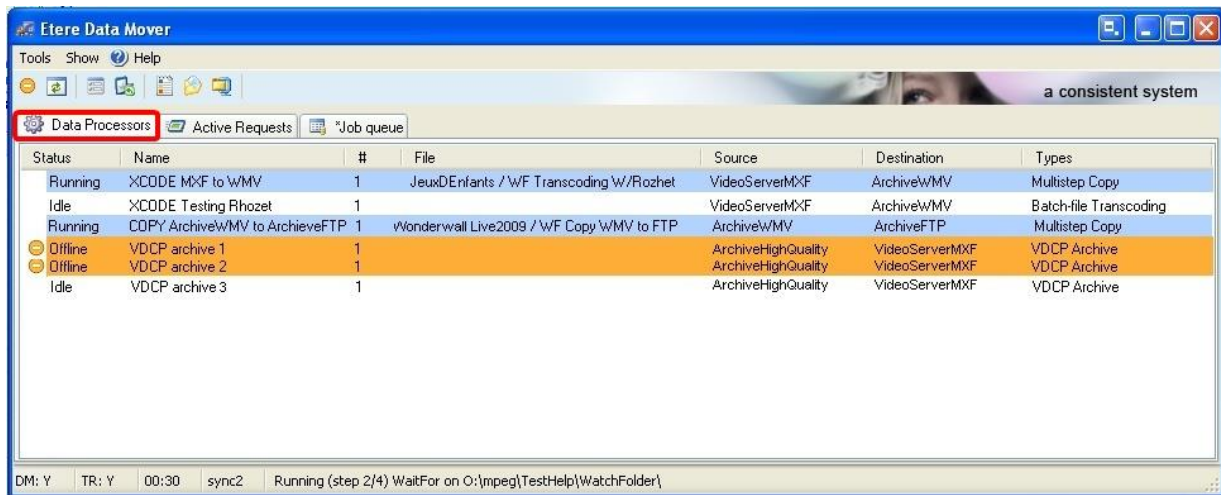
5.9 ETERE MEDIA MANAGER: A Digital Archiving and Delivery

The Media Management solution proposed to encompass station's content transfer and archiving goes beyond of a simple copy concept by moving video files based on custom policies, transcoding video files when required and offering a full track of all operations.



Video contents will be transferred between the various departments (e.g.: near-line storage, archive, post-production, playout, browsing, and even non-Etere systems) by Etere Media Manager; this migration process also includes rewrapping and transcoding capabilities.

Etere's approach is oriented to "virtualize" the entire media management process, improving it with flexibility, customization and most important cost-effectiveness.



Etere manages (logical) metadevices instead of (physical) devices, this approach results in a wide range of possibilities for the media management, for example, it is possible to control with one click the available space of all metadevices:

The screenshot shows the 'Free device space monitor' application window. It displays a table with the following data:

Device name	Total	Available	Quota of available	Available free space
SEA-BMS	*Not available	58:00:00.00	58:00:00.00	78 %
K2-Client	*Not available	58:00:00.00	58:00:00.00	50 %
EtereMTX	*Not available	58:00:00.00	58:00:00.00	64 %
PDR2	16,66 Gb	5,85 Gb	5,85 Gb	65%

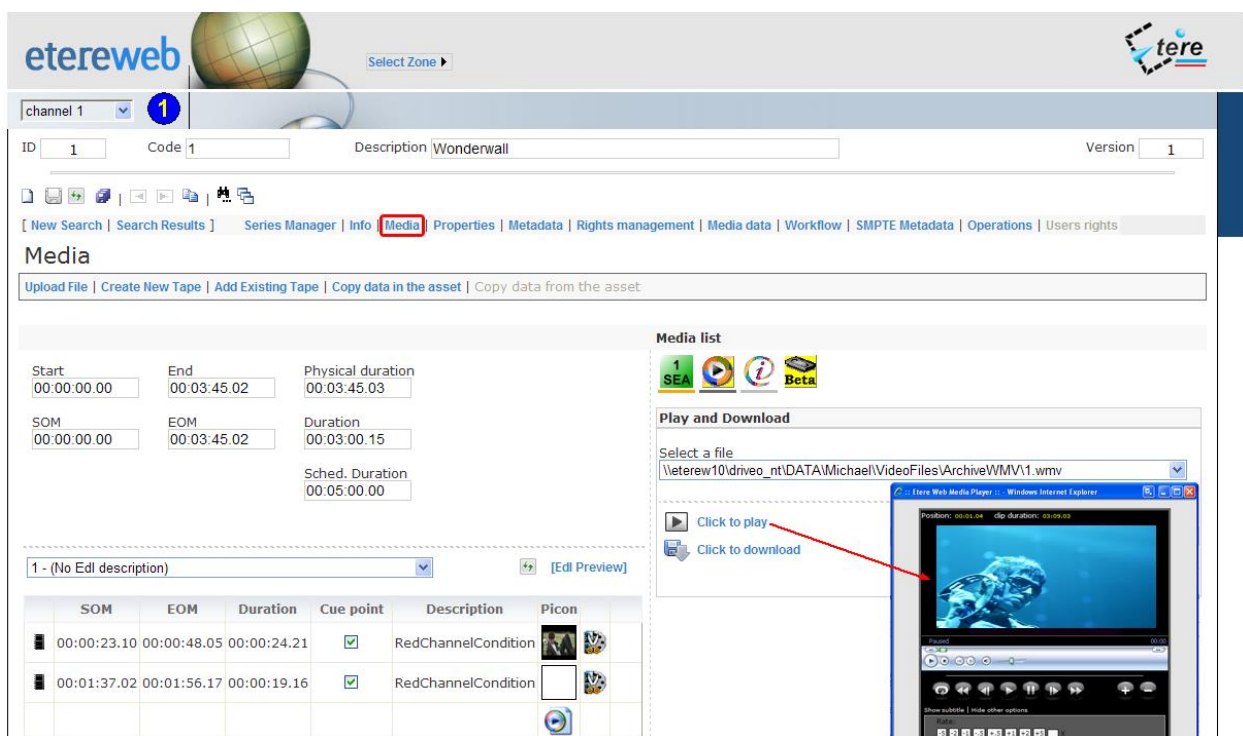
Etere Data Mover is the application used to perform the physical storage and retrieval of video files, a typical Data Mover operation would be to move a video clip from a video server to an archive based on custom actions which are defined and executed via workflow.

Additionally, the crucial logging function is available for all Etere applications, log files are written by the software each time it performs a task so it will be possible to trace their execution status, interaction level, and final result.

5.10 ETEREWEB: Post-Production Integration

Etere Web is the web service seamlessly integrated with the playout and media management system to permit arriving contents to be managed digitally, resulting into a faster and more efficient delivery process which also includes digital signing features for any delivered content.

EtereWeb integrates the latest streaming technologies for video distribution and a comprehensive rights management system that gives to authorized users the possibility to access via web to a user-friendly interface:



Etere Web works perfectly behind routers so remote access and ftp transfers are drastically improved. NLE systems can deliver contents via Etere Web as a digital equivalent of physical reception, where selected people can deliver video and metadata to the station, but owing to its digital nature, operations are perfectly organized, performed and logged, avoiding loss of any content information.

6. Conclusions

This paper has described the implementation of an Etere-based “Media Asset Management and Newsroom integrated system”, a reliable solution for streamlining RBC TV’s news operations, providing a large number of operational benefits and advantages derived from the efficient use of ultimate media management technology; digital contents of the station will be managed, from news acquisition to news delivery, with a tight integration with other existing sub-systems.

The many key benefits that Etere will provide to the station have been condensed in the following points:

- **Workflow reliability**, workflow-based operations from ingest to delivery that permits to monitor the individual system functioning while increasing productivity,
- **News integration**, enhanced compliance with ENPS, one of the industry standards, to ensure a flexible yet powerful integration of the newsroom and the automation systems,
- **Scalability support**, for increasing the number of capturing channels (cameras, video servers, etc) without altering the system workflow complexity, thus minimizing operational overheads and reducing overall costs,
- **Editing features**, the newsroom department of the station will be able to easily browse and edit video files, editing functions allows to easily cut segments, merge segments, overlay audio, restore composed media, etc, and all of this, under a user-friendly interface,
- **Centralized media**, media assets stored on a centralized server will be available for producers, reporters and editors, with the maximum of efficiency to reduce the risk of mistakes when retrieving data which is periodically and accurately checked,
- **Automatic logging**, transmitted contents are automatically captured, catalogued and archived, thus meeting the broadcast compliance logging required by the station,

- **Long-term archiving** , Integration of tape libraries to store and transparently manage the long-term media archiving,
- **Traffic management**, the commercial broadcast schedule is managed by a dedicated system to made up the traffic schedule and monitor the transmission of all scheduled commercials,
- **Capturing flexibility**, on implementing the capturing channels from which media content will be acquired.
- **NLE integration**, Non-linear editing systems will be able to access the digital archive directly and efficiently through a proper production environment, making use of the highest security standards.

7. About Etere

Etere is an international leader in the media market. Etere develops and distributes a wide range of high technology software for broadcasting and media businesses. With more than 20 years of experience, Etere provides powerful, flexible, cost-effective, high-performance, end-to-end media solutions. Etere is the only company worldwide that can offer you a solution to all your media needs in one single package.

Etere is the only solution 100% workflow based for all broadcast and media environments. It's a common framework where there is real-time sharing of all the data among several applications to manage all media business requirements. The workflow approach allows a fully customized design with edge performances.

From its headquarters in Tolentino, Italy, Etere guarantees the best after-sales support service on the market with engineers ready to give professional assistance 24 hours a day, 7 days a week. The service includes voice, email, VPN and VoIP with unlimited calls and connection time, and a pro-active system to help diagnose problems before they appear.

Etere: a consistent system

Contact Information:

Etere Pte Ltd

140, Paya Lebar Road, #06-16 Singapore 409015

Tel +65 67021772

E-mail office@etere.com

Website: www.etere.com