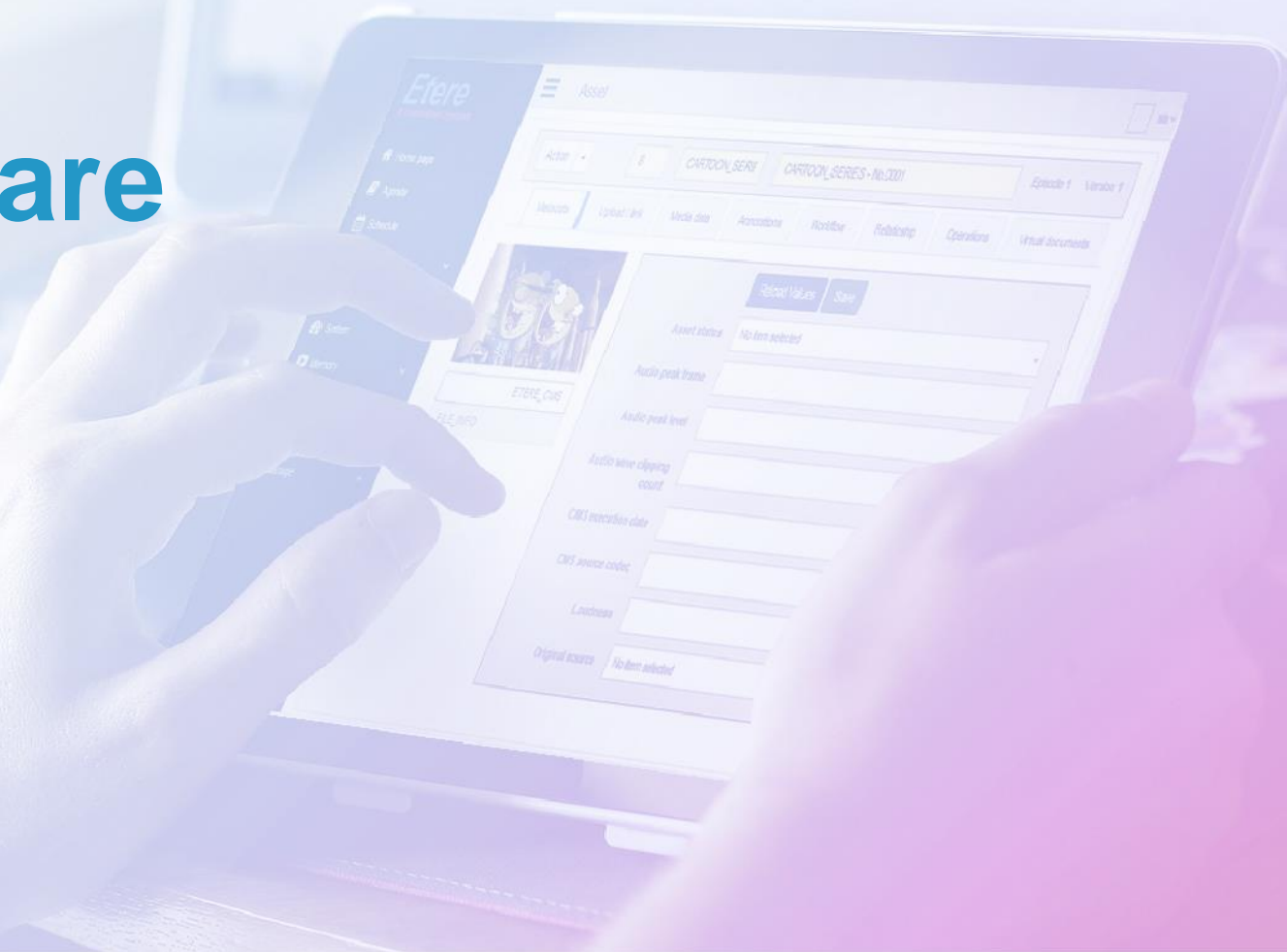
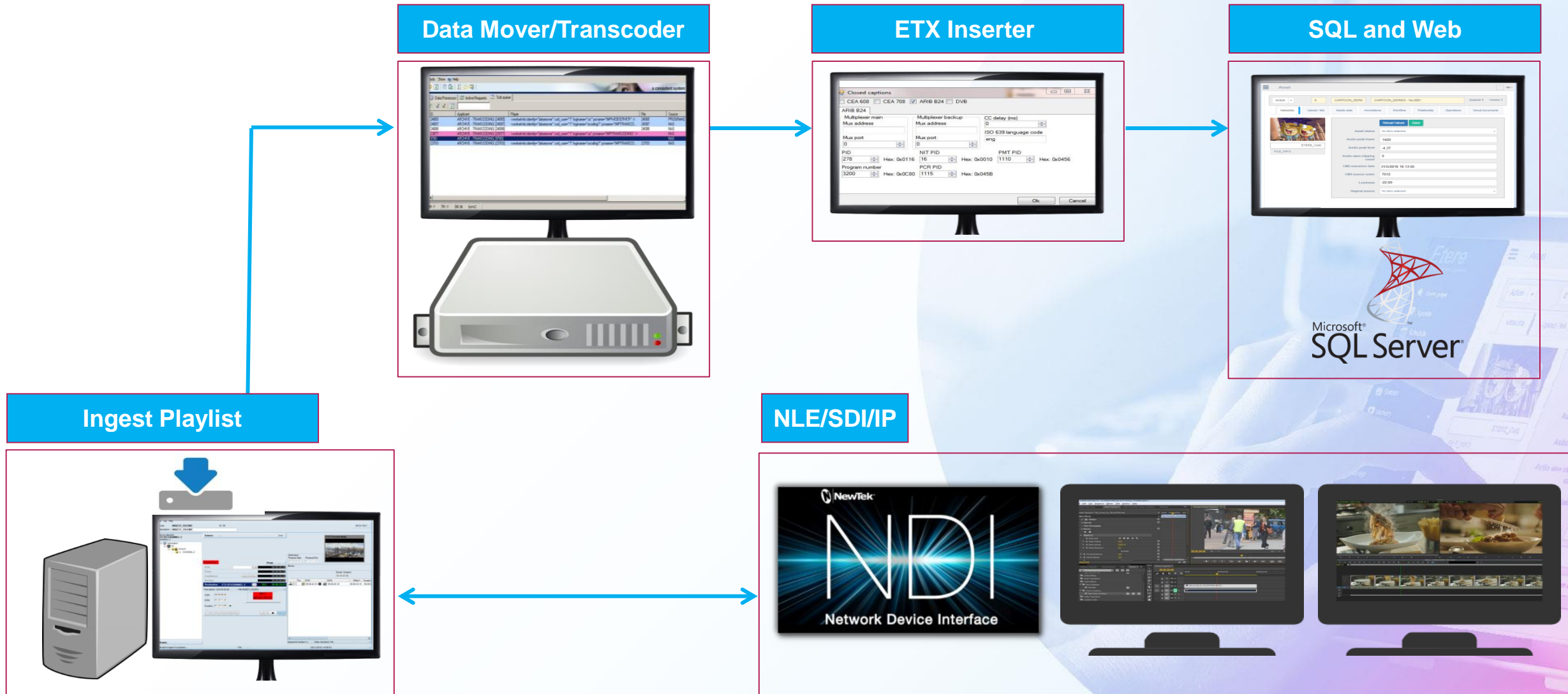


Budget Closed Caption Suggested Hardware

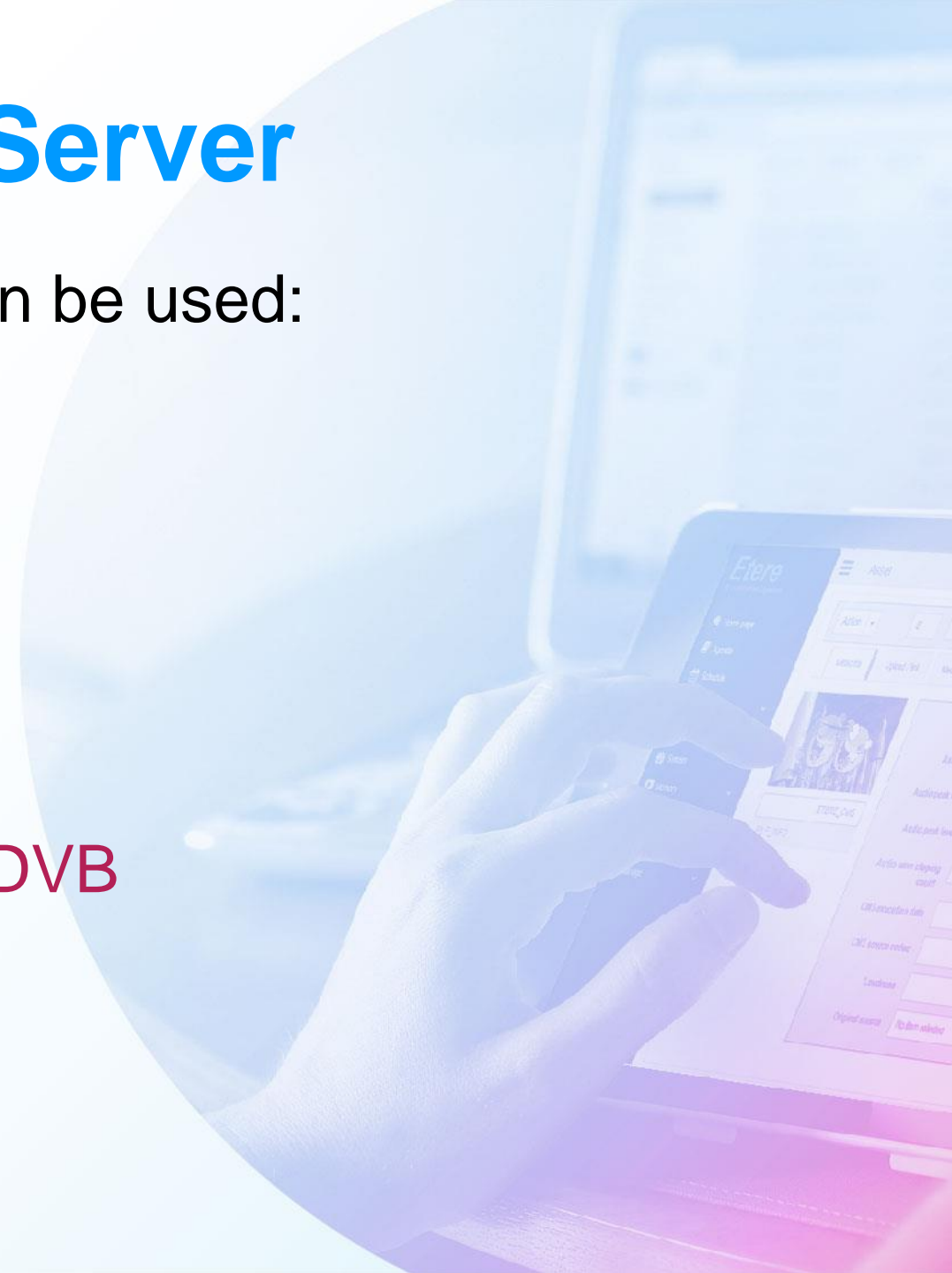


Workflow



Rackmount Server

- Example of rackmount server that can be used:
 - DL3xx Gen10
 - CPU: Silver 4110 or better
 - RAM: 32GB
 - 2x300GB 6G SAS 10K
 - WIN 2019
 - Nvidia P2200 for H264/H265 and DVB
 - Storage for video files
 - SDI card if SDI in/out is needed



Example of Client

- Budget Closed Caption Package allows up to 10 PCs/Servers.
- Example of client PC that can be used:
 - Intel® Core™ i7-8700K Processor
 - Windows 10
 - 16 GB
 - 300 GB HD

