

PROPOSAL

Etere
a consistent system

TV3 Malaysia:

An enterprise MAM
system based on MERP
technology



April 12th 2013



Table of Contents

▼ 1. INTRODUCTION	5
▼ 2. PROPOSAL OVERVIEW	6
▼ 3. ETERE ARCHITECTURE	9
▼ 3.1. Distributed system.....	9
▼ 3.2. Multi-level storage hierarchy	10
▼ 3.3. Access levels.....	11
▼ 3.4. Rights-based operations.....	11
▼ 3.5. Active Directory Integration	12
▼ 3.6. Look and feel	12
▼ 3.7. Reporting services	14
▼ 3.8. Documents Management.....	14
▼ 4. MEDIA FUNCTIONALITIES.....	15
▼ 4.1. Multiple Storage Management.....	15
▼ 4.2. Custom Workflows	16
▼ 4.3. Integration between workflows	17
▼ 4.4. File-based processing	18
▼ 4.4.1. Content Check	19
▼ 4.4.2. Quality Check.....	20
▼ 4.4.3. Archiving	21
▼ 4.4.4. Restore	21
▼ 4.4.5. Transcoding	22
▼ 4.4.6. Checksum MD5 Verification	23
▼ 4.4.7. Video Cut	23
▼ 4.4.8. Audio Normalization.....	23
▼ 4.4.9. Antivirus scan	24
▼ 4.5. Resources Management.....	25
▼ 4.6. Subtitles Tool.....	26
▼ 4.7. Metadata Organization	28
▼ 5. ETERE COMPONENTS.....	29

▼ 5.1. Tape Manager: An enterprise management of tapes.....	29
▼ 5.1.1. Tape Library	30
▼ 5.1.2. Racks.....	31
▼ 5.1.3. Tape Loan	32
▼ 5.1.4. Tape Manager.....	33
▼ 5.2. HSM: A tape-based archiving	34
▼ 5.3. Ingest: A versatile acquisition system	36
▼ 5.3.1. Wide range of acquisition modes	37
▼ 5.3.2. Automatic workflow actions.....	38
▼ 5.4. MTX: Digital capture based on Matrox technology.....	39
▼ 5.4.1. Robust IT solution	40
▼ 5.4.2. Master Control Panel.....	40
▼ 5.5. MAM: Browsing, editing and more	41
▼ 5.5.1. Media cataloguing and Metadata insertion	41
▼ 5.5.2. Video conforming and audio over	42
▼ 5.5.3. Partial media restore	43
▼ 5.5.4. Search engine	44
▼ 5.5.5. Logged operations	45
▼ 5.5.6. Integration between MAM and Ingest	46
▼ 5.6. DataMover: Intelligent archiving and delivery	47
▼ 5.6.1. Simple and user-friendly interface	48
▼ 5.6.2. Logical management of data	48
▼ 5.6.3. Distributed parallel jobs	48
▼ 5.7. EtereWeb: Post-production integration	50
▼ 5.7.1. Authenticated access and rights.....	51
▼ 5.7.2. Digital delivery	51
▼ 5.7.3. Search, retrieval and preview	52
▼ 5.7.4. Selective upload interface	53
▼ 5.7.5. Pre/Post upload processing.....	54
▼ 5.7.6. Multi-file upload support	55
▼ 5.7.7. Workflow integration with NLE systems	56
▼ 5.7.8. Centralized monitoring interface	56
▼ 5.7.9. Remote archive consultation.....	57
▼ 5.7.10. User Permissions	58
▼ 5.7.11. Security integration	60
▼ 5.8. Monitoring Console: A complete SNMP monitoring	61
▼ 5.8.1. SNMP monitoring support.....	61
▼ 5.8.2. Visual real-time monitoring.....	62
▼ 5.8.3. Robust monitoring features	63

▼ 6. KEY BENEFITS 64

▼ 1. INTRODUCTION

TV3 Malaysia or (STMB) is an Entertainment and informational private TV channel of Malaysia, owned and operated by the **Media Prima Berhad** group. Launched on 1984, **TV3 Malaysia** has its headquarters in Sri Pentas - Bandar Utama, from where it broadcasts since 2011 a full 24-hours schedule made up by bold and best-of-breed programming including Dramas, Film, Music, Update News and Talk Shows.

TV3 Malaysia is the first free-to-air and biggest television network in Malaysia with a leadership position maintained over its almost 30 years of operations reaching over 4.5 million households and 21 million viewers all over the country, **TV3 Malaysia** focuses towards its viewers and advertisers, a strategy that has proven a phenomenal success.

The proposed solution is designed to provide an “**Enterprise MAM system based on MERP technology**”, a solution able to store and transparently manage the facilities’ archive material over the long term. Etere’s solution consist of a system intended to be the core of the central archive, providing media archive management and delivery services to the global system including instant access and delivery of media files; all this media management is cemented on a file-based workflow framework featuring a wide range of function-specific workflows for ingest, production and playout with additional integration capabilities.

The Etere-based system will comprise media ingest, archive, management and distribution solution combining powerful modules with an easy to use interfaces, this solution will permit to straightly connect content captured by Etere Ingest with Etere MAM to view and catalog video assets before delivering them via workflow, in either standard definition or high definition. **Etere MAM (Media Asset Management)** will be the core of the overall system, providing workflow management, production project management and content management features; thus ensuring a streamlined tapeless environment able to capture, edit, catalog and deliver contents, fast and efficiently.

This paper is aimed to describe how the solution proposed by ETERE is able to fulfill all the specifications required by **TV3 Malaysia**, making a special focus on the Etere’s architecture and the operational advantages and benefits offered by a system able to manage and streamline the most important phases of media asset management with a wide set of cutting edge applications that goes from the content acquisition, through cataloguing and production to their final delivery.

▼ 2. PROPOSAL OVERVIEW

TV3 Malaysia has requested a consistent project for the digital management of media content under a file-based workflow environment, to digitally capture their content and subsequently catalogue it including all content-related metadata to facilitate their future search and query through a comprehensive browsing application. Etere's solution consist of a system intended to be the core of the global system, providing media archive management and delivery services including instant access and delivery of media files.

Operations related to all contents present in the station are cemented on a file-based workflow framework featuring a wide range of function-specific workflows for ingest, production and playout with additional traffic capabilities. The modules that Etere will implement across the system are briefly described below:

INCLUDED MODULES

- **Etere Ingest**, the flexible solution for capturing contents from a wide range of sources,
- **Etere MAM**, the best solution for indexing and editing a huge amount of media assets, it provides tools for an easier metadata insertion and video cut and merge,
- **Etere HSM**, an automatic tape-based storage system for long-term management archive,
- **Etere DataMover**, the enterprise workflow-based media manager that guarantees timing and effectiveness on media transfers between devices,
- **EtereWeb**, a secure and robust threshold to the station's outside world, a web-based interface that will permit a tight integration with NLE systems and remote facilities (e.g. post-production),.
- **Etere MTX**, the most advanced, tightly integrated and cost-efficient driver to implement an ingest server based on the ultimate HD/SD Matrox digital video cards.

In these terms, **TV3's technology department** has summarized the characteristics that the solution must include in the following key points:

Specification	Proposed solution	Chapter
User interface	The GUI of all Etere applications is user friendly and easy to use; its menus are designed with the Windows-8 metro style whereas all modules can be customized through use of skins.	3.6
Search engine	All applications provided for the management of assets are empowered with a robust search engine which provides the most advanced search features such as multiple criteria, full-text, boolean search, filters, saved searches, results management and more.	5.5.4

Editing	Etere MAM provides the most common editing functions for Hires and Lores media (e.g. marking, cutting, trimming, copy-pasting, format conversion, conforming and partial restore) providing versioning capabilities for managing edited material. It's worth mentioning that enhanced functions such as blur, mosaics, warp, and others can be easily added through the integration of specialized editing systems.	5.5
Indexing & Cataloguing	Etere MAM supports indexing and cataloguing media either as soon as content and even before its acquisition, allowing operators to mark assets and insert metadata on marked points (quick insertion through intuitive keyboards and keywords is provided).	5.5
Data Transfers	Etere DataMover gives capabilities for automatic transfers based on a workflow management, thus allowing MAM content to be received and delivered from and to specific sources/targets (e.g. servers, external HDD, DVD/Blu-ray recorders, etc.) in both, standard and high definition formats.	5.6
Reporting	Etere Reporting Service providing capabilities for printing data (i.e. asset information, inserted metadata, etc.) and exporting these data into common formats (e.g. pdf, excel, word, etc.) maintaining the displayed layout.	3.7
Attached files	Etere Documents Management allows saving any digital file (e.g. documents, thumbnails, screen captures, etc.) as attached files for specific assets.	3.8
Quality Control	Etere Workflow allows launching an automatic QC action for any file (e.g. immediately after an acquisition, for all files stored on a server, etc.), providing audio normalization, black and freeze detection, etc. Moreover, integration with DataMover permits an automatic processing of checked material (e.g. removed marked segments from media content).	4.4
Audit trail	Users can consult all performed operations since they are all logged specifying the station, workstation and user who performed it as well as further details such as the date, time and description.	5.5.5
Ingest	Etere Ingest will allow to easily acquire content from a live source into the MAM archive, supporting both, manually and automatically (with predefined devices at scheduled times). Capturing content from tapes through VTR devices will be also supported, for media with both VITC/LTC and CTL timecode. Acquiring content from digital storage devices (hard disks, DVD, Blu-ray, etc.) is possible through a "video file import function".	5.3
Web interface	EtereWeb is the solution for connecting the MAM archive to intranet and internet users, providing via web almost all the functionalities available in the desktop version. Functions can	5.7

	be granted to specific user groups (e.g. MS Active Directory).	
Metadata	Etere MAM allows detailing media content with a wide range of metadata including title, synopsis, cue-sheet, attached documents (scripts, thumbnails, posters and banners). It's worth mentioning that depending on the structure of current customer's system a migration of metadata is possible between is old and the new MAM system.	4.7
Format compatibility	Etere DataMover gives capabilities for moving files between different devices and also perform on-demand transcoding for delivering files into their needed format (e.g. MXF, DV 25, MOV, etc.). A tight integration with Content Storage Management systems (e.g. DIVArchive) is possible.	5.6
Tapes	Etere Tape Management provides enterprise capabilities for managing tapes inside the station, allowing to know the exact location of offline tapes in either racks or internal/external offices. Content stored on a LTO tapes can be viewed and also printed and also exported.	5.1
Monitoring	A Monitoring Console allows monitoring the progress of all jobs performed via workflow will be monitored in real time through a user-friendly interface.	5.8
Automation	Etere Workflow enables a automatic file-based management of any media operation, from the creation of lo-res, through archiving of hi-res until the restore and delivery.	4.4
Flexibility	The Etere's distributed architecture permits introducing new special functions requested by its customers. Upgrades are available free-of-charge to customers with a valid support service.	3.1

▼ 3. ETERE ARCHITECTURE

Etere is based on a distributed architecture which allows different modules to run on different workstations interconnected via a local area network. All system configuration parameters, security roles, user data, and pre-defined rules are stored in a reliable SQL database supporting backup and redundancy operations. A greater availability and reliability is achieved thanks to the ability to manage main and backup systems able to manage independent resources so in case of failure the station can recover from any hardware or software failure by simply switching to the backup system.

▼ 3.1. Distributed system

ETERE is a distributed, modular and fully integrated broadcasting system composed by a set of applications specifically oriented to efficiently perform each complex phase of the broadcasting chain synchronously within the same database environment, being all managed by suitable user-defined workflows that ensure an efficient overall system controlling.

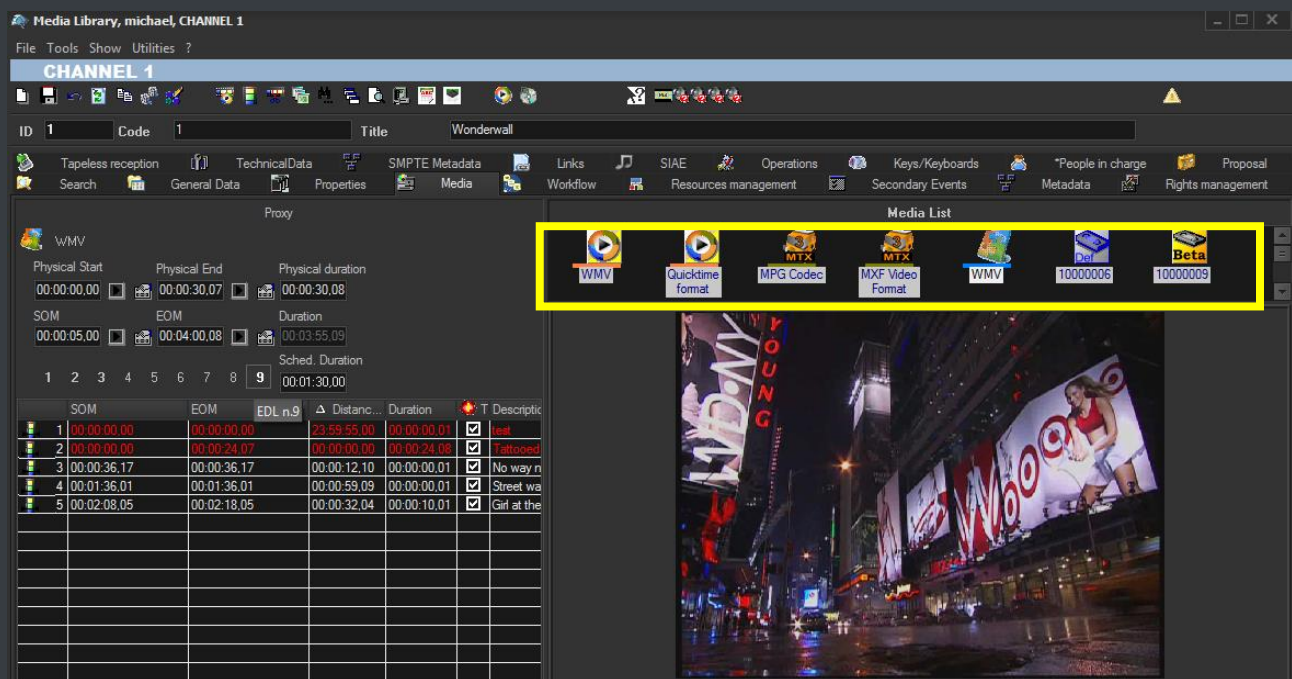


Etere's distributed architecture allows achieving a top-level availability of resources and reliability of operations across the entire broadcast workflow thanks to its redundant capabilities to improve the fault resilience on any hardware or software failure. Etere provides free-of-charge periodical updates for all customers with a valid support service.

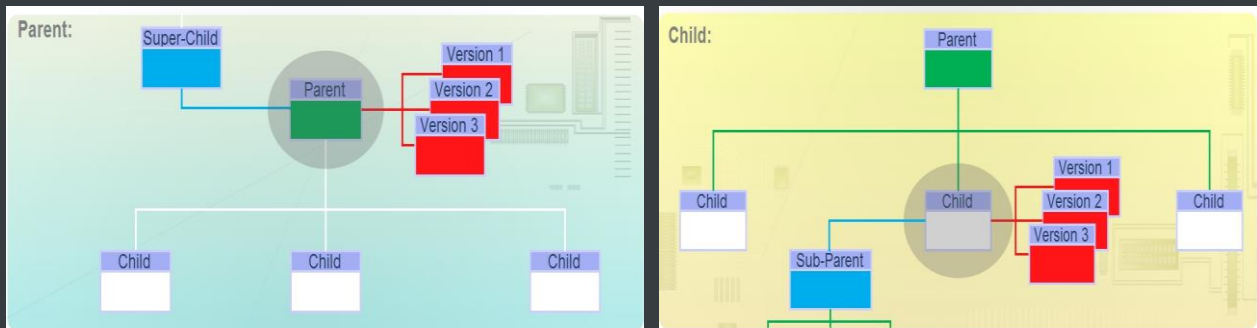
▼ 3.2. Multi-level storage hierarchy

Etere systems improves the media management by introducing a **multi-level storage management** consisting in the use of different storage levels based on the frequency of use of the files stored on them. For example, data files which are frequently used will be stored on video servers (i.e. online servers) whereas those which are not used for a certain period of time (e.g. typically a few months) will be eventually archived in tapes (or any other long-term storage mean) and then automatically restored -to video servers- every time they are required by the broadcast playlist.

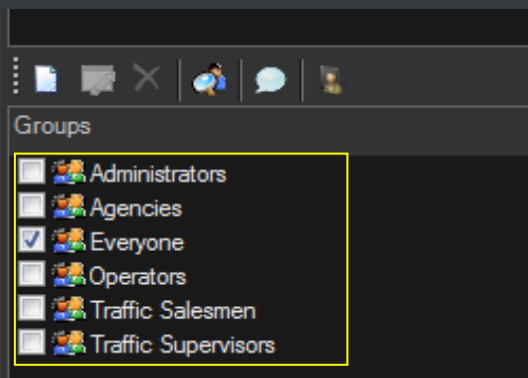
Etere offers a hierarchical storage management of media content, it allows organizing in user-specific levels an unlimited number of content versions with different access times (e.g. video servers, near-line servers, archive servers); all levels are available to operators under a user-friendly interface:



Moreover, media holders (i.e. asset forms) can be organized –along with their related information– under a hierarchical structure based on Parent-Children relationships, thus allowing, for example, handling different versions of a same asset and all the assets derived from them:



▼ 3.3. Access levels

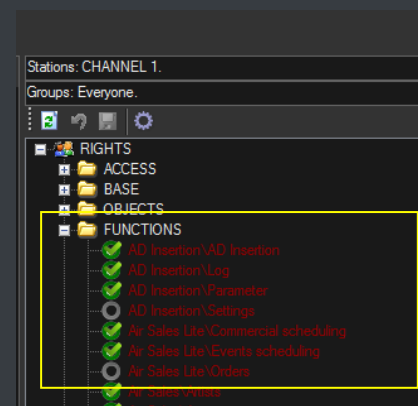


Etere provides stations with a **“Rights Management Tool”** to control and track access to its various modules and functions, with it, stations will be able to freely assign (grant or deny) access to specific user groups (i.e. roles to which one or more users belongs to), thus allowing to set different mixtures of access levels for each group. Etere allows managing different –and fully customizable– access levels for users which form part of the system, with Etere; set specific access rights not only for different users, but also for different stations.

▼ 3.4. Rights-based operations

All the functions provided by an Etere system (e.g. quality control, event scheduling, program playback, etc.) falls under different categories according to their nature (e.g. data mover, ingest, etc.), the availability of these functions is determined by the **“Rights Management Tool”**.

Thanks to this tool, stations will be allowed to reflect into the Etere system the actual way in which rights are managed within the station facility, for example, scheduling operators will be allowed to use only those modules to which they are authorized to use, including (or excluding) some sensitive functions intended to be managed by system administrators.



▼ 3.5. Active Directory Integration

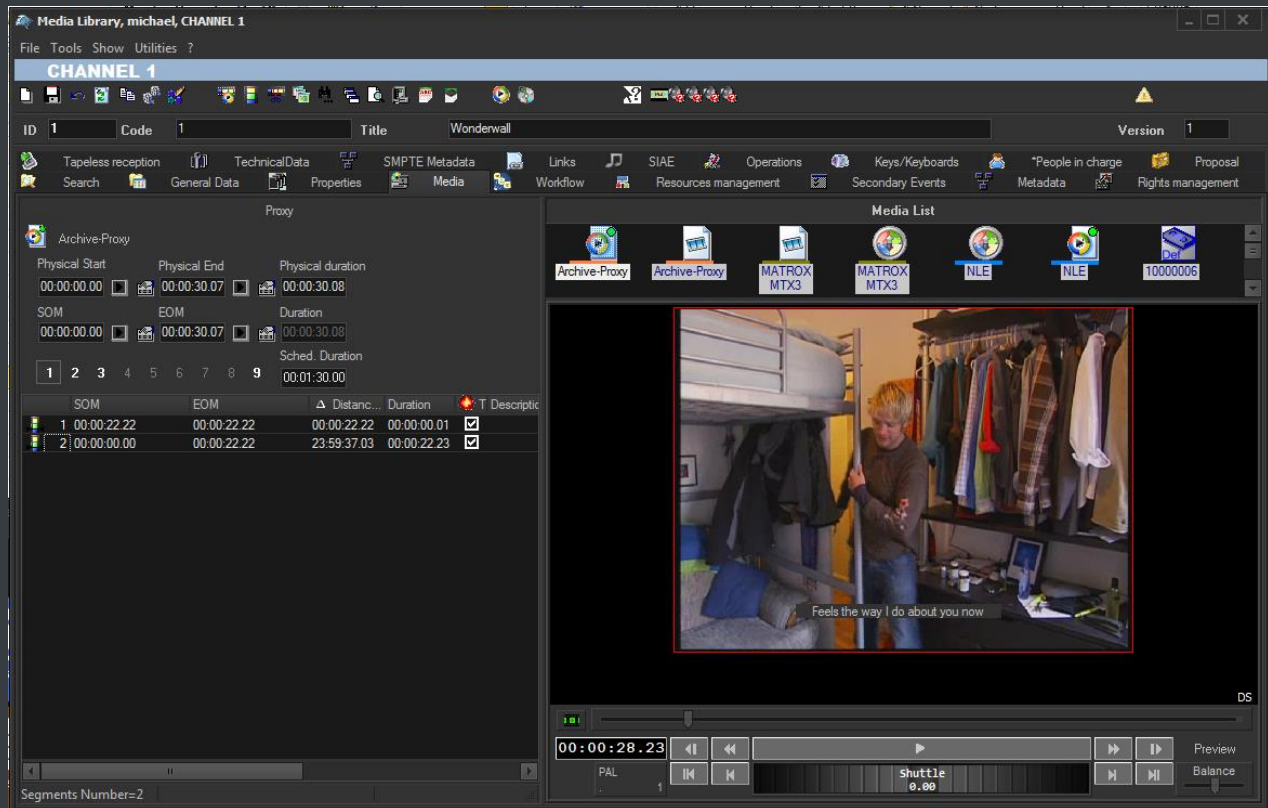


Etere allows creating a new rights structure importing groups and users from your organization's **MS Active Directory**. Once opened, this tool will display all groups and users present in the Etere Rights structure, allowing to update the Etere Rights structure by synchronizing it against the MS Active Directory. Groups and users will be displayed along with a status icon:

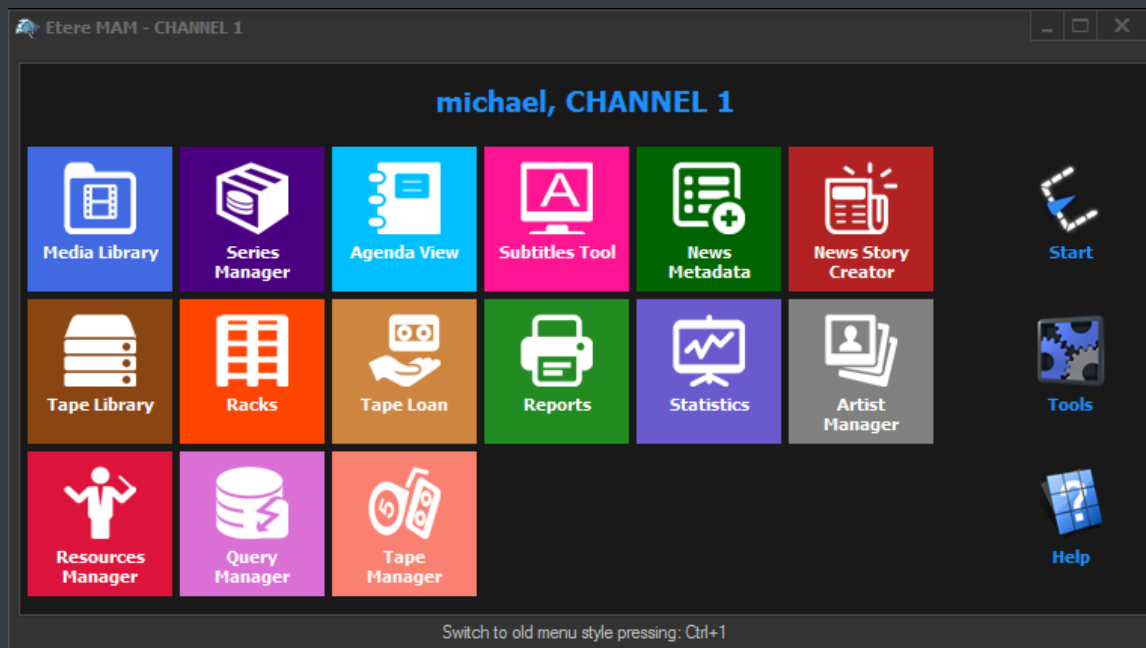
	The <u>group/user</u> will be added to the <i>Etere Rights</i> since it is present in the <i>MS Active Directory</i> .
	The <u>group/user</u> will be removed from the <i>Etere Rights</i> since it is missing in the <i>MS Active Directory</i> .
	The <u>group</u> has users that will be added/removed from the <i>Etere Rights</i> since they are present/missing on the <i>MS Active Directory</i>

▼ 3.6. Look and feel

In Etere, the GUI experience gives you a professional interface with less distractions and more focus. The high contrast will help working on any light condition from dark master control rooms to enlightened editing rooms:



Moreover, main menus now follow the Windows 8 GUI to be simple, intuitive and easy to use:



▼ 3.7. Reporting services

Etere Reporting Services provides an intuitive report environment to enable users to have an enterprise reporting environment enhanced with an unlimited number of custom reports; it permits reports to be easily designed and accurately managed through a reporting engine that allows to preview, print and export any report under a user-friendly user interface.

Etere Reporting Services integrates a dedicated reports database with the main system database, thus improving the reliability and performance of the system since all reports (and their settings and snapshots) are stored in a dedicated server.

Etere Reporting Services is based on the ultimate SQL Server Reporting Services technology that permits to leverage all key features of a web-based reporting server focused on simplifying the process of creating and editing reports:

1 CHANNEL 1

*Tasks status by workflow

Workflow	RES - QUICK Censorship	Action	All
Assignee	All	*Validity period	1/07/2012 - 1/10/2012

*Workflow - Action

Code	Title	Assignee	*Validity start	*Validity end	Status	*Executor	*Execution time	Duration	Result
RES - QUICK Censorship - WS Censorship Approval (w/p)									
2	Ferrari 150 spot	Vasquez Michael	18/09/2012 10:12:07 AM	25/09/2012 10:12:07 AM	Running				
2260	test work order	Administrators	27/09/2012 11:28:07 AM	4/10/2012 11:28:07 AM	To do				
3671	Casablanca	Administrators	27/09/2012 10:56:44 AM	4/10/2012 10:56:44 AM	To do				
3745	A blue automobile	Administrators	25/09/2012 4:05:22 PM	3/10/2012 4:05:22 PM	Done	michael	25/09/2012 4:06:09 PM	00:34:00	Approved

▼ 3.8. Documents Management

The **Document Management (Do.Ma.)** feature is a big deal for many enterprises especially when the amount of documents raises the cost of ownership to high levels. Reducing paper documents and cataloguing by digitizing and saving in a SQL database, allows an integrated enterprise information system. Information is easily available to the several production sectors, and they may be found in a very simple and efficient way by anyone looking for them:



Etere Document Management allows you to associate many files to one "virtual document", in this way you can refer a group of documents to a user. A "virtual document" is a container that collects several documents, so you can associate a group of physical documents to a unique container, moreover the same document may be associated to several containers. Containers are connected to digital objects (e.g. contract scheduling details, scheduled events, personal data, account invoices, existing assets, receipt faxes, etc.), either acquired by a scanner or directly inserted, which will be stored into in the Etere's SQL database.

▼ 4. MEDIA FUNCTIONALITIES

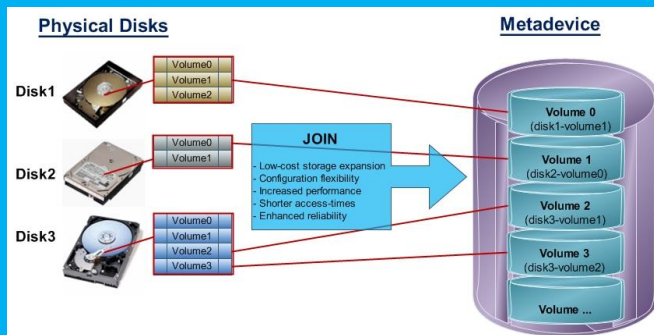
Etere's solution features an integrated and professional approach based on a workflow management to optimize the station's entire broadcasting system, reduce operating costs and facilitate overall process control. Etere Workflow permits modules to for example, seek confirmation for sensitive process, follow specific rules, enhance the efficiency and reliability of process, and manage multiple workflows to perform different tasks simultaneously and independently.

▼ 4.1. Multiple Storage Management

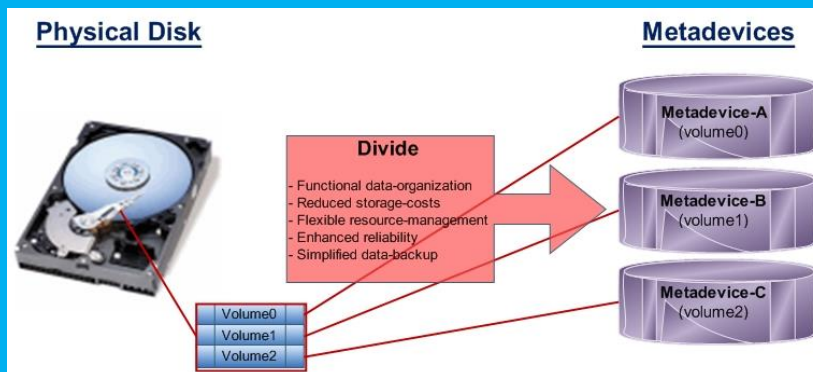
Etere reduce the complexity of managing storage devices by arranging physical storage devices present across the system into metadevices (logical devices), the use of metadevices improve the overall media management by offering the following features:

KEY STORAGE FEATURES

- Automated management via workflow of logical devices including archiving, restoring, transcoding, etc.,
- Monitored storage space owing to the set of restrictions,
- Increased storage and better performance since metadvice acts as a virtual device representing several logical disks or disk systems:



- Distributed storage according to specific requirements without the need of creating partitions, just associate individual disk volumes to different:



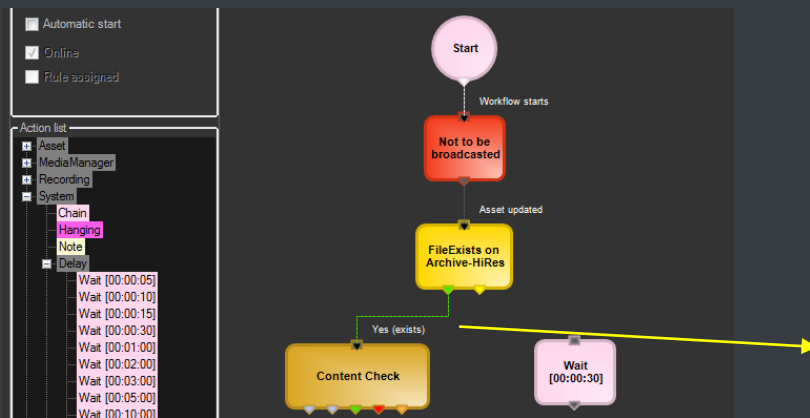
▼ 4.2. Custom Workflows

All workflows can be customized to fit the real needs of the station and thus give complete control over the overall system management which offers:

KEY CUSTOMIZATION FEATURES

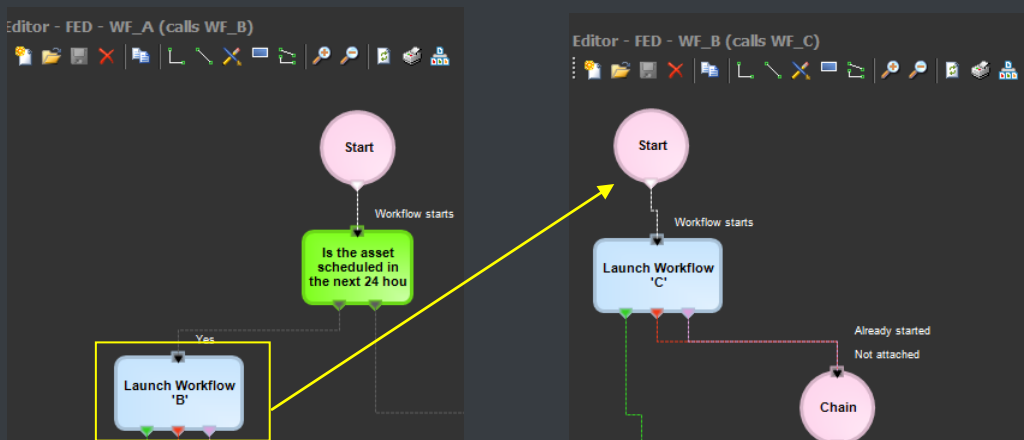
- Clear definition of each complex step of the broadcasting process,
- Visual representation of each step mapped out on a PC not in a paper document,
- Set of instructions and authorizations that must be followed in order to move forward,
- Complete log of all steps carried out, operations denied etc.

A comprehensive and user-friendly workspace allows creating suitable workflows based on custom actions just by dragging and dropping the necessary elements into it:

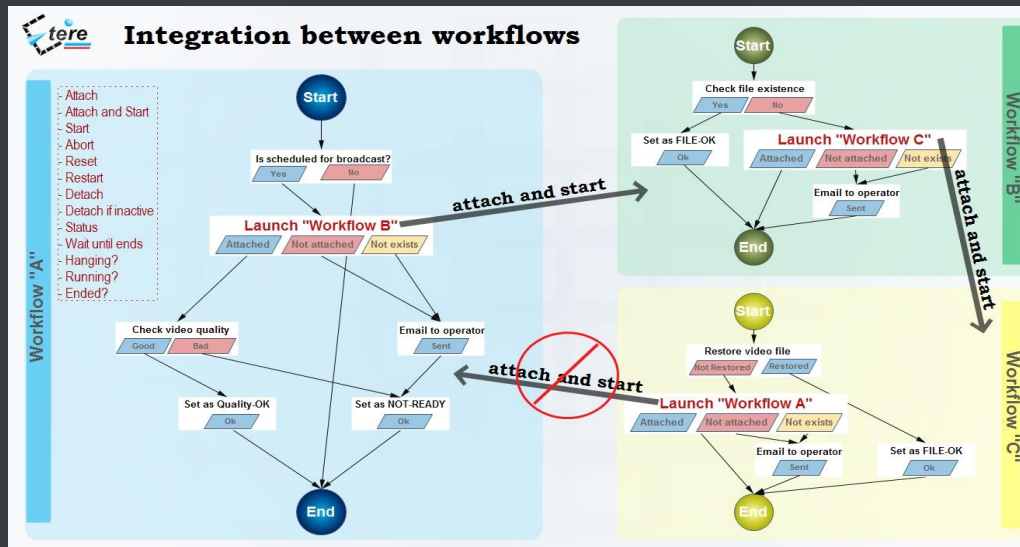


▼ 4.3. Integration between workflows

Etere allows calling workflows from others just by inserting an action that can perform a specific task (i.e.: attach, attach and start, start, abort, reset, restart, detach, etc.) on a certain workflow:



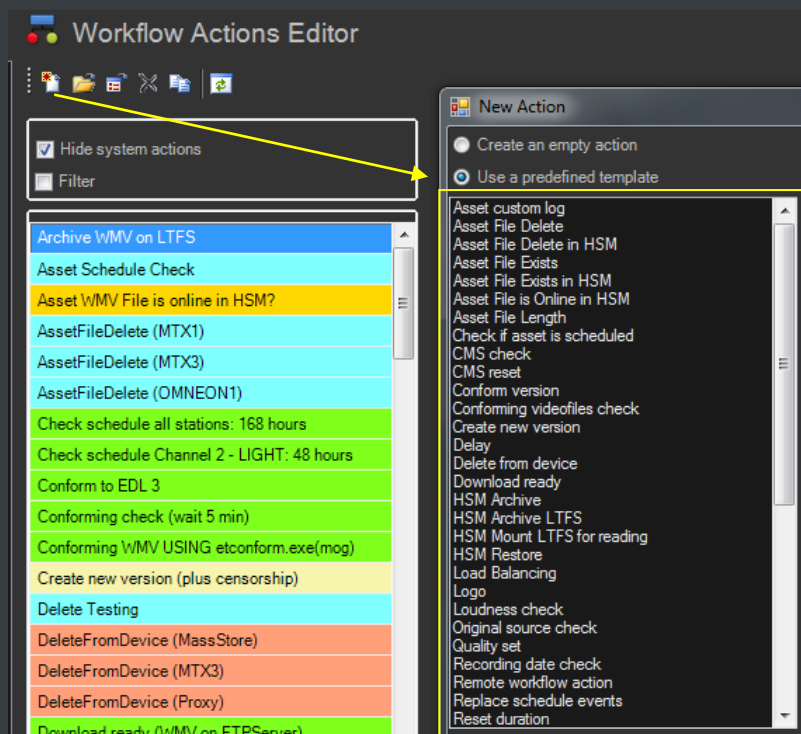
The diagram below illustrates how Etere maintains the system consistency by avoiding loops between workflows (a message is displayed indicating action incompatibilities between workflows):



As shown above, for example, if 'workflow A' calls 'workflow B' and the 'workflow B' calls 'workflow C', the 'workflow C' will not be able to call the 'Workflow A'.

▼ 4.4. File-based processing

Etere provides a wide range of templates for creating workflow actions regarding the most common file-based media operations, allowing customizing them and also using completely user-defined actions:

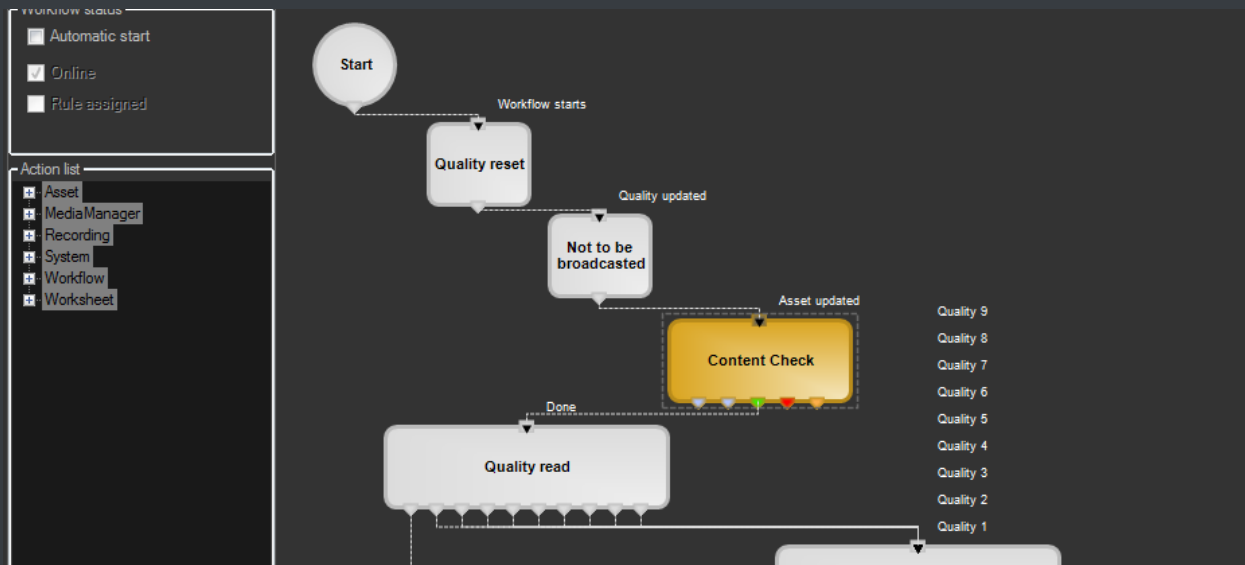


▼ 4.4.1. Content Check

Etere CMS, which stands for Content Management Server, an integrated file-based module for performing Quality Controls (QC) via workflow. Etere CMS is the best solution for checking audio/video either prior (e.g. playout, repurpose, archiving) or after (e.g. encoding, ingest, editing, transcoding, archiving) a media operation.



CMS will speed up, automate and streamline the operational efficiency of file-based quality controls performed via workflow across the entire content life cycle.



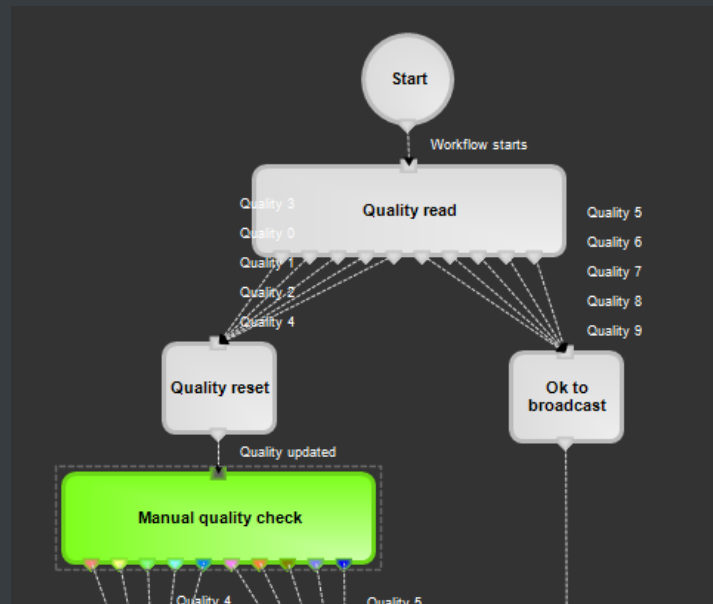
CMS is based on a workflow action which, once included into a workflow that will automatically analyze the asset's proxy video to detect and log (into its EDL) the following audio/video issues:

KEY QC FEATURES

- **Scene changes:** Video stream segment containing brightness differences between consecutive frames.
- **Black frames:** Video stream segment containing black frames and an audio volume lower than a reference level.
- **Freeze frames:** Video stream segment containing a single frame image repeated -as a frozen like a snapshot- for a period of time.
- **Audio silence:** Video stream segment containing silent frames (i.e. frames matching a certain silent audio level and a black video level).
- **Audio level:** Video stream segment presenting "noisy audio signals" which are greater than a given maximum threshold.
- **Anti-phase audio:** Video stream segment containing audio waves with "anti-phase signals", that is, opposite channels which mutually cancel each other out.
- **Audio loudness:** Measurement performed based on the ITU-R BS.1770 loudness metering algorithm widely used as loudness-compliant standard.

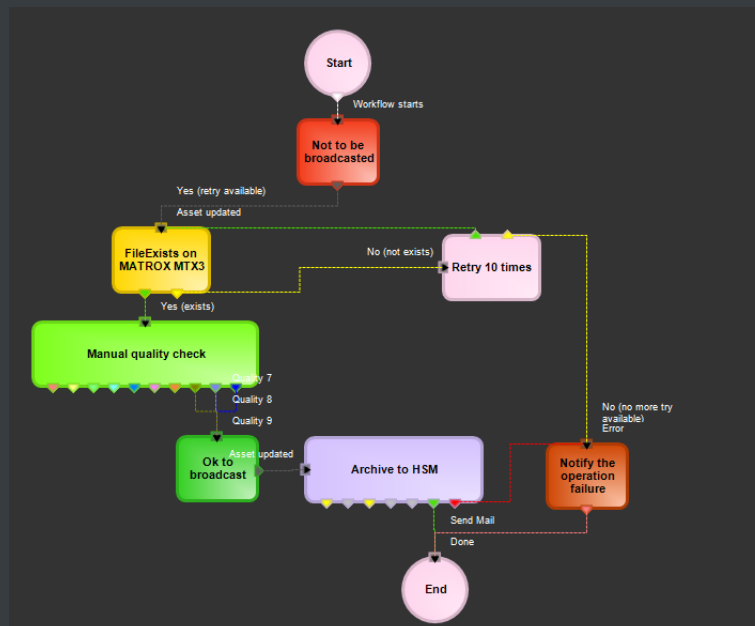
▼ 4.4.2. Quality Check

An Etere quality check workflow is able to automatically ask operators to assign a quality value to a certain asset(s) after browsing its video content:



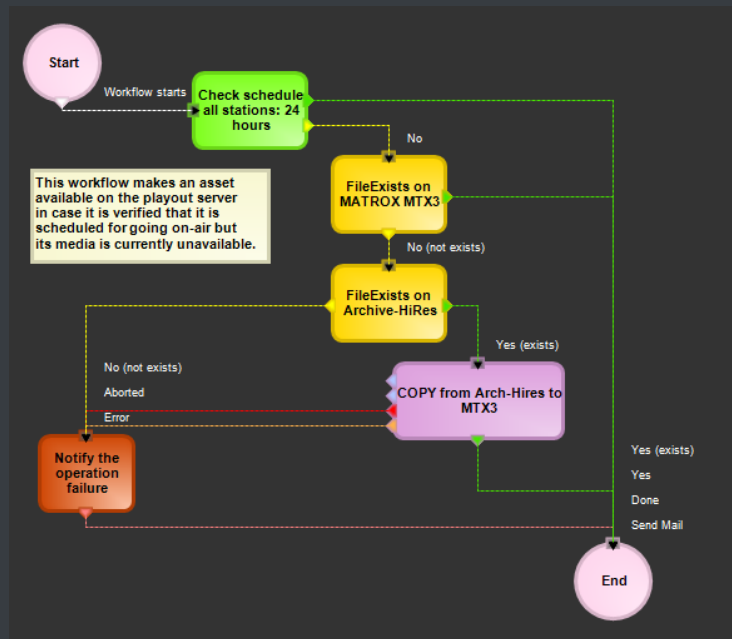
▼ 4.4.3. Archiving

Etere allows you to design a workflow for archiving your assets on LTO tapes, including a quality and content check, a proxy copy generation and a final email indicating the result of the process:



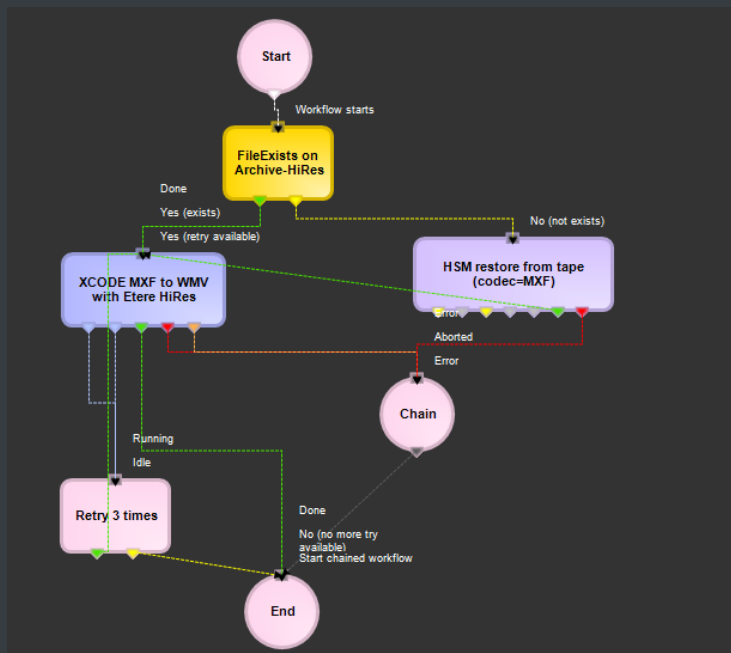
▼ 4.4.4. Restore

Create a workflow to automatically restore any scheduled asset for its playout by searching for them amongst a group of devices arranged on basis of their priority:



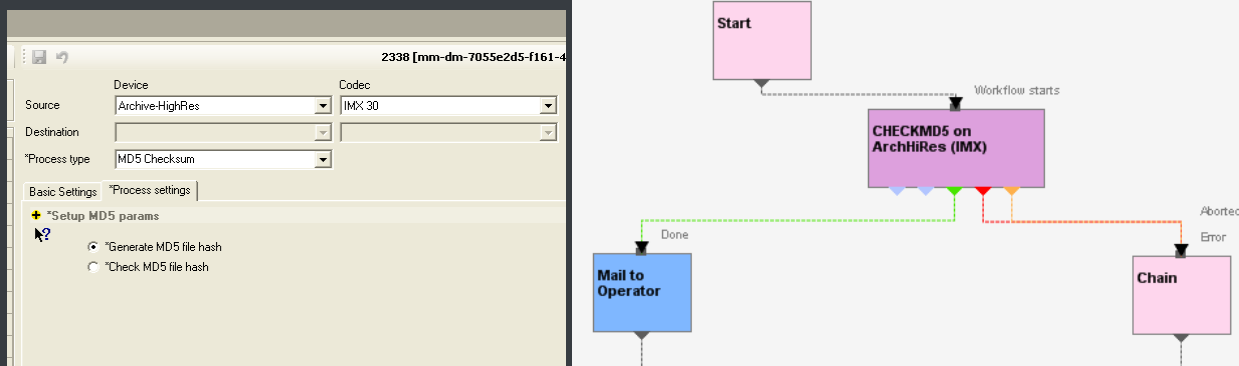
▼ 4.4.5. Transcoding

Etere's integration with Rhozet's Carbon Coder software handles a wide array of critical operations including format conversions, workflow operations that can be launched for example, immediately after a content capture:



▼ 4.4.6. Checksum MD5 Verification

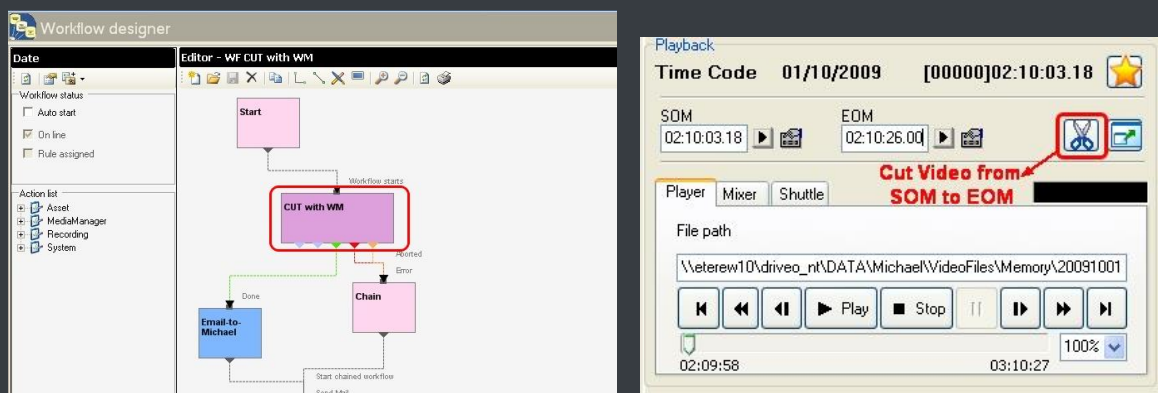
Etere offers an enterprise control of video files integrity; it keeps a log of the hash md5 of video files such in a way that it is possible to verify at any time if they have been modified after their approval. All video files registered on the Etere's database can be verified through an md5 checksum, this control is performed via workflow, each time that a video file is moved from one device to another, its initial hash md5 is calculated to allow a future checking:



The workflow editor allows creating custom Checksum workflows to either generate or check the MD5 hash of a video file.

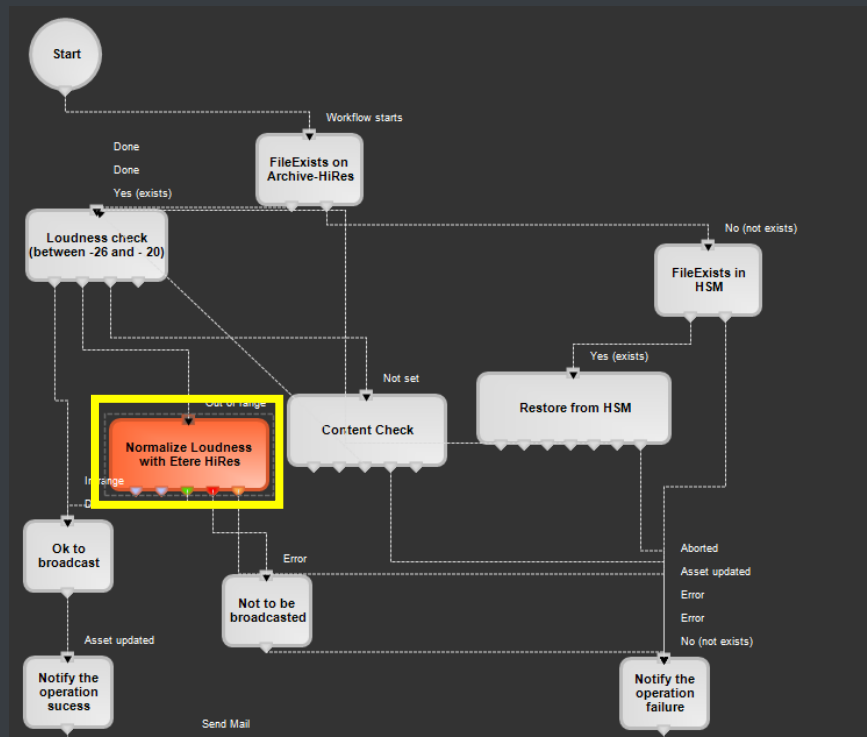
▼ 4.4.7. Video Cut

Etere offers 'Cut actions' that permits to take only a portion of a certain video file, using a given time code SOM and EOM. Defining and using a Memory Cut operation is as easy as shown below:



▼ 4.4.8. Audio Normalization

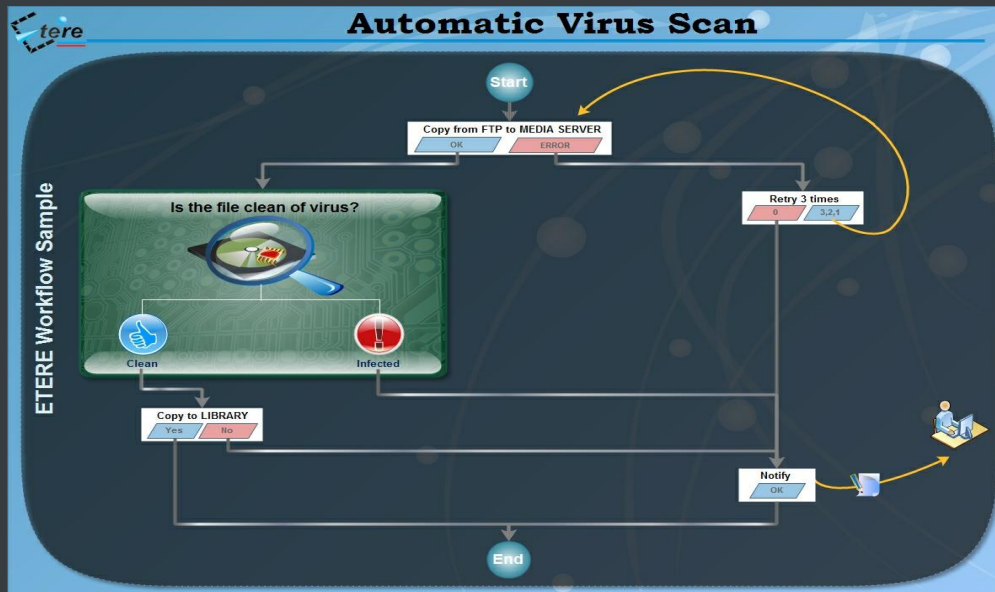
Etere provides a file-based loudness control, allowing stations not only to check the loudness level of media contents but also to normalize them to meet specific limitations.



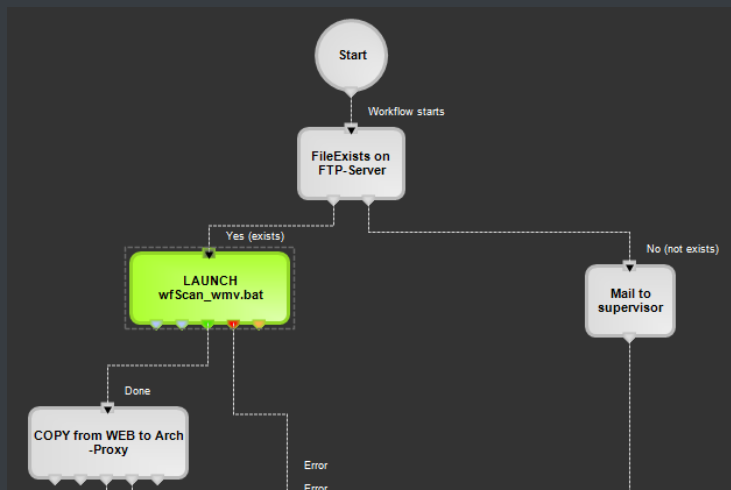
As shown in the sample above, “loudness normalization” workflows can be launched automatically for specific assets, for example, after their ingestion or tapeless reception (i.e. web upload).

▼ 4.4.9. Antivirus scan

Etere includes, as a part of its enterprise media management, the capability of integrating antivirus protection within workflows, allowing stations to improve their media workflows (e.g.: post-upload workflows) by giving them the capability of automatically scanning transferred files for virus and thus end their work with a flourish.

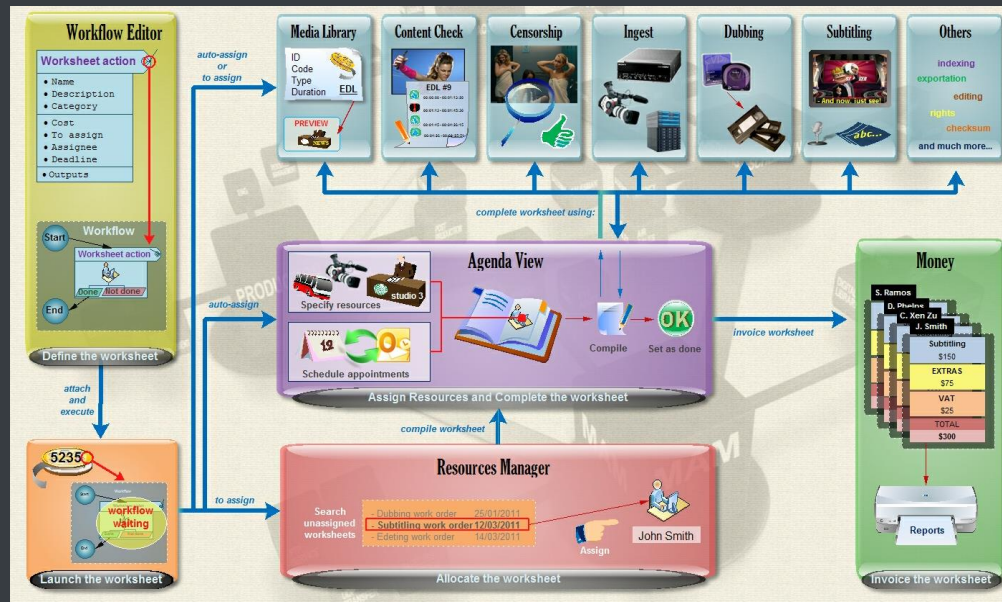


As shown in the figure above, the automatic virus scan capability can be easily integrated within any workflow at any stage just by inserting an action block configured to perform the virus checking; stations can insert them, for example, within the default workflow to be launched after an EtereWeb upload.

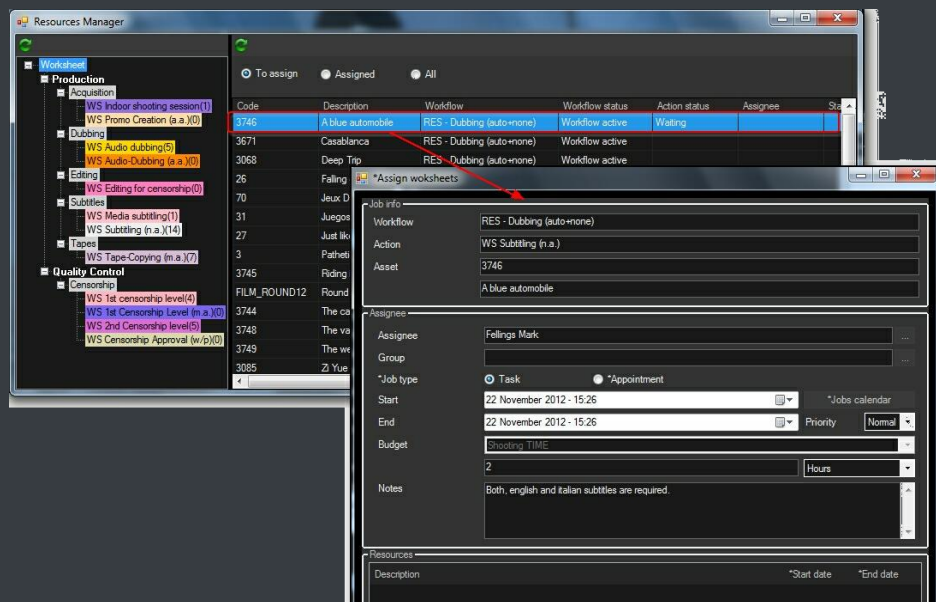


▼ 4.5. Resources Management

Resources Management is the flexible solution that permits to virtually manage all operations actually involved in the media asset management, such as for example, subtitles generation, promo creation, tape copying, media editing, audio dubbing, etc. Etere integrates the management of worksheets, from their creation and compilation to their tracking and invoicing.

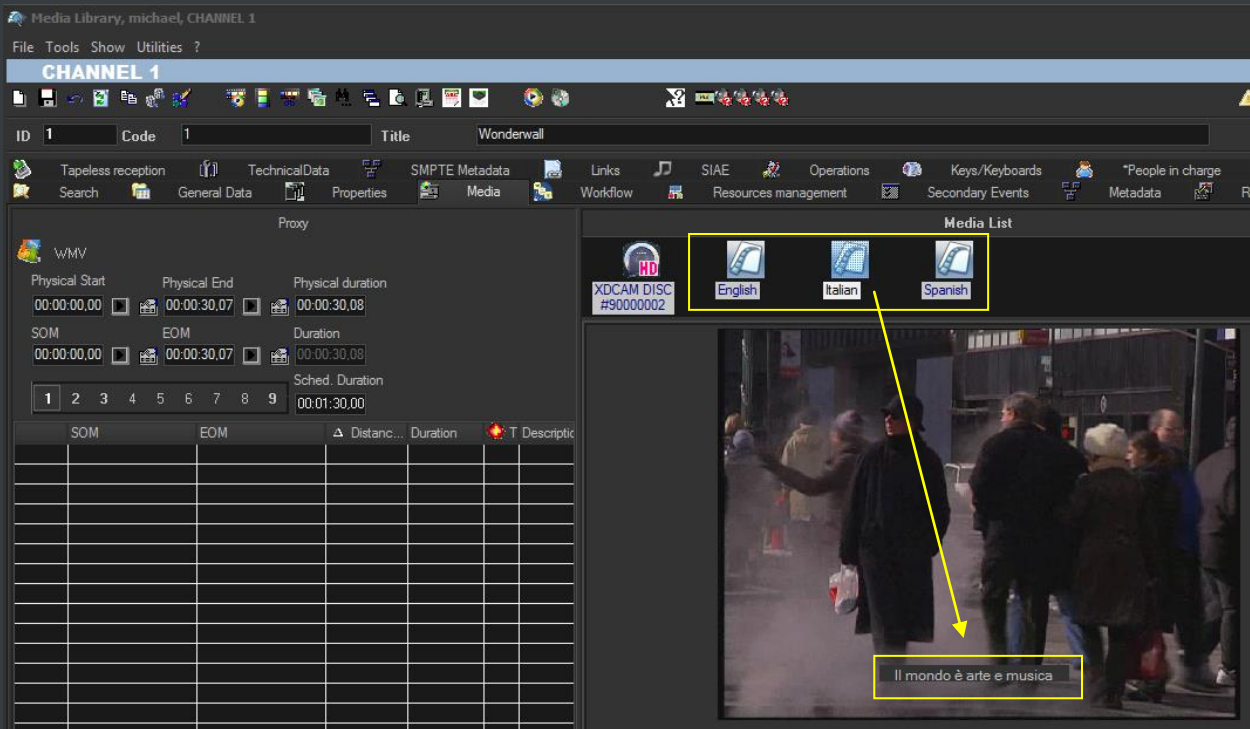


Worksheets are based on a custom structure and are fully integrated into the workflow management, being possible to create user-defined worksheets and include them in automated workflows which current status can be consulted at any time in real-time from either a desktop or web interface:



▼ 4.6. Subtitles Tool

Etere includes, as a part of its enterprise media management, the capability of managing subtitles, subtitles can be generated whether using the WMP synchronized lyrics tool or any other external tool, in all cases Etere will import them automatically:

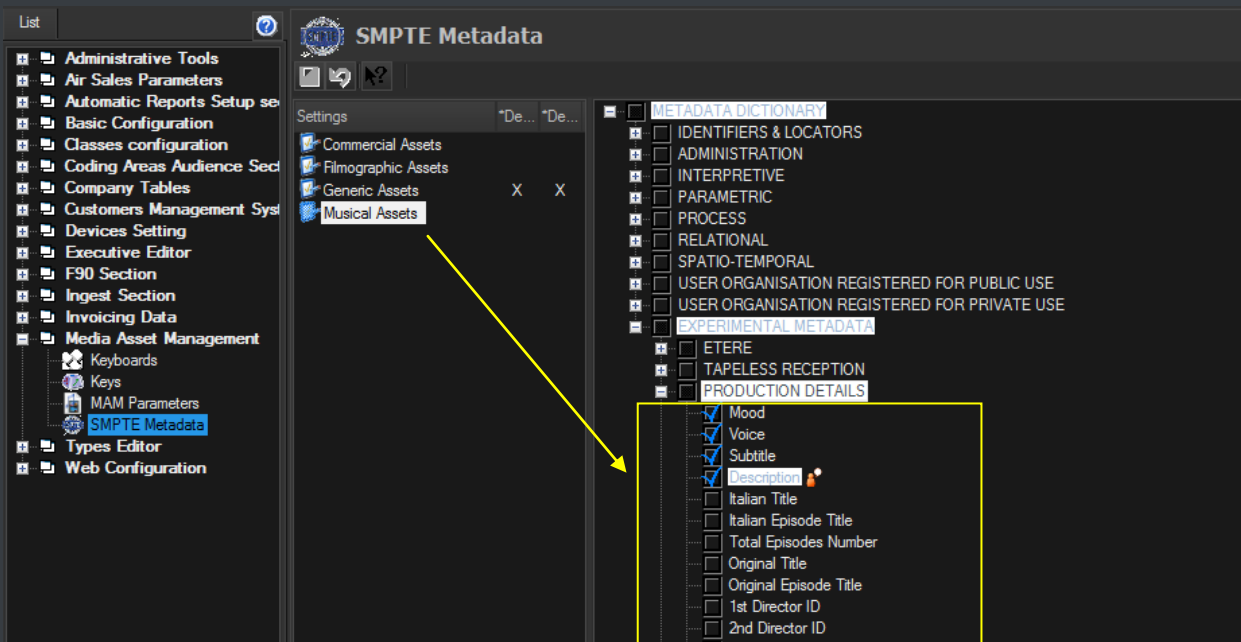


As shown above, subtitles are stored in a repository, ready to be moved to the subtitle engine when either the broadcast playlist will require it or a proxy preview will be performed (e.g. for quality check purposes). Additionally, multiple language subtitle files are supported, allowing stations to specify so many subtitling languages as needed (including their storage paths):

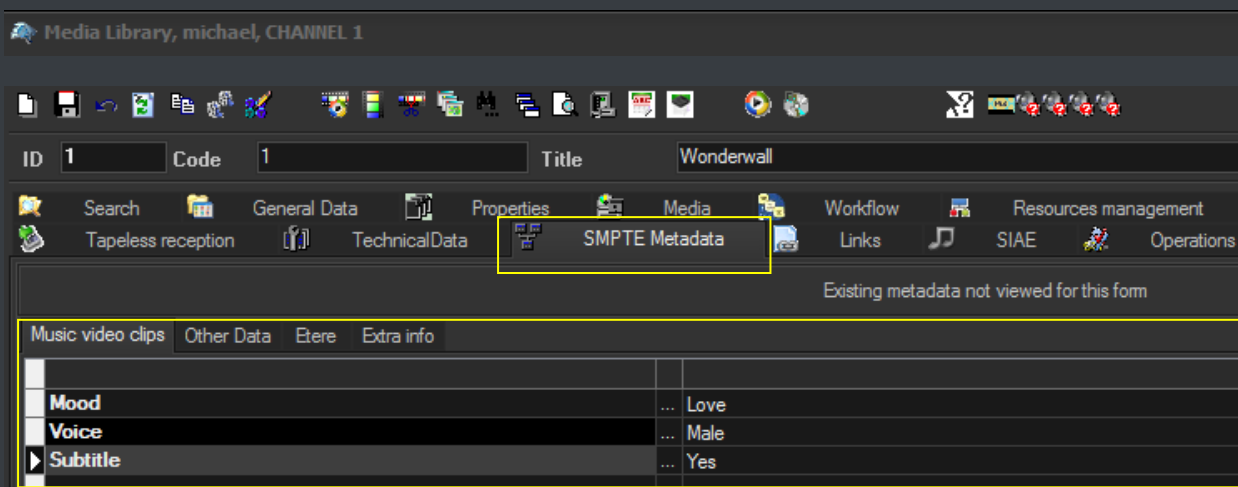


▼ 4.7. Metadata Organization

SMPTE (Society of Motion Picture and Television Engineers) Metadata is a key part of the media management, that's why Etere provides a dedicated module for defining eventually useful metadata (e.g.: 'technical comments', 'descriptive names', 'intellectual rights') and store them into a robust SMPTE dictionary:



In Etere, all assets contain user-defined SMPTE metadata fields, these fields can be either manually compiled or automatically compiled (retrieved from specific asset properties):



SMPTE metadata can be used also for cataloguing media content, allowing operators to quickly add specific information to a video segment.

▼ 5. ETERE COMPONENTS

ETERE is an integrated broadcasting solution that implements a modular system formed by a set of modules specifically oriented to cover each complex phase of a broadcasting system, focusing to efficiently carry out specific operations such as ingest, archiving, transferring, browsing, etc.

All these operations are synchronously performed within the same database environment and managed by suitable user-defined workflows that ensure an efficient overall system control; these are some of the main features that make of ETERE a solution that can easily fit any media management workflow. All modules that make part of the Etere's proposed solution will be treated throughout this chapter, explaining their roles in the global distributed and integrated system.

▼ 5.1. Tape Manager: An enterprise management of tapes

Etere allows stations to manage their tape archives (video tapes, data tapes, discs) through a set of modules specifically designed to perform the most important tape-related operations; these modules are illustrated in the figure below and described all throughout the current chapter:



It's worth mentioning that the tapes management provided by Etere can be greatly complemented with the remote tapeless capabilities described in the chapter dedicated to the EtereWeb module.

▼ 5.1.1. Tape Library

The **Tape Library** module is the inventory where all tapes managed within the system are inserted and defined, being possible to search them through a robust search engine (loaned tapes are highlighted to point out their unavailability):

Tape Library, michael, CHANNEL 1

File Tools

Search Tape

Code
Title
Description
Barcode
Source barcode
Types
Supplier
Source

Date From 16/01/2013 TO 16/01/2013

Search also the expired media

Records displayed 250 Search

ID	Types	Code	Title	Description	Barcode	Date	Tape type	Types	Media	Status	Location
8	Beta	10000002	10000002	Another testing tape	10000002	12/06/2009	Master	Beta	1BETABETA		Beta Library Slot (1, 2)
80	Beta	10000004	10000004	Just a testing tape	10000004	12/10/2009	Master	Beta	0BETABETA		Beta Library Slot (1, 3)
102	Beta	10000005	10000005	Oasis top videoclips	10000005	26/06/2009	Master	Beta	1BETABETA		Beta Library Slot (1, 4)
12	Beta	10000006	10000006	Oasis top videoclips	10000006	26/06/2009	Master	Beta	1BETABETA		Beta Library Slot (1, 5)
106	Beta	10000007	10000007	Wonderwall versions	10000007	29/06/2010	Master	Beta	1BETABETA		Beta Library Slot (2, 1)
104	Beta	10000008	10000008	Wonderwall versions	10000008	29/06/2010	Master	Beta	1BETABETA		Beta Library Slot (2, 2)
13	Beta	10000009	10000009	Wonderwall versions	10000009	29/06/2010	Master	Beta	1BETABETA		Beta Library Slot (2, 3)
101	Beta	10000010	10000010	Kristal thom	10000010	25/10/2011	Master	Beta	0BETABETA		Beta Library Slot (2, 4)
82	Beta	10000011	10000011	Reception loud	10000011			Beta	0BETABETA		Beta Library Slot (2, 5)

Retrieved tapes can be consulted by viewing their main information (i.e. ID, code, description, type, format, barcode, media pool, rack location):

Tape Library, michael, CHANNEL 1

File Tools

Search Tape

ID 106

Code 10000007

Title 10000007

Description Wonderwall versions

Tape Type Master

Media Format Beta

Video Standard Ntsc 625 DF

Barcode 10000007

Date 29/06/2010

Dual Audio ☐

Media Pool

VTR Info

Number 1 Types BETA

Counter ☐ LTC ☐ CTL

Source barcode tape03

Last Inventory 31/12/2010

Subtitled ☒

Personal data Archive Location Languages Notes Operations

Supplier Michael Vasquez

Source DevilsAgency Devil's Agency

Moreover, it will be also possible to perform various operations such as tape creations, tape loans, tape copies and status consultations (e.g. empty tapes, loaned tapes, etc.):

The 'Tape Info' window displays the following information:

Code	10000050	Types	BETA
Title	10000050	Type	Video Tape
Barcode	10000050		

Status	Quality	Codec	Code	Description	SOM	EOM
			124	Juventus - Real Madrid Champi...	00:00:00.00	01:50:10.20

▼ 5.1.2. Racks

The **Racks** module provides a simple user-interface for locating tapes inside specific racks and libraries and consult some of their more important storage properties (e.g. free space, used space, etc.). As shown in the figure below, the user interface is mainly composed by the Content List (i.e. where contents of each single library/cart can be consulted) and a Toolbar (holding the functions supported for their management).

The 'Racks' window displays the following information:

Rack: ETLIBRARYWS2008\IBM 3573-TL Lines: 23 Columns: 1 Free slots: 20

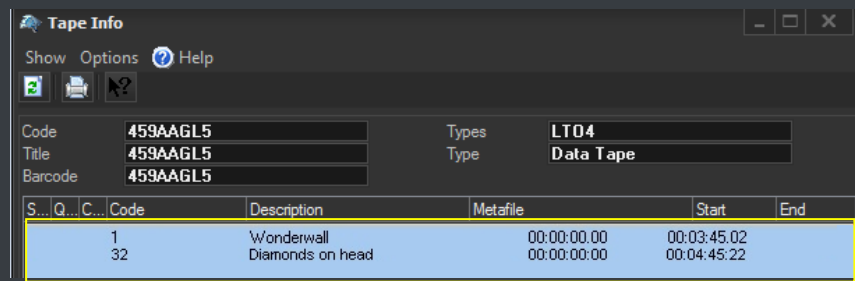
Total space: 3.91 TB Used space: 0 0%

Rows	Media Code	Video Standard	Free space	Used space	Total space	Percentage	Media pool
1						0%	
2	459AAGL5	LTO4	800.00 GB	0	800.00 GB	0%	MP-Videoclips
3	457AAGL5	LTO4	800.00 GB	0	800.00 GB	0%	MP-Memory01
4	455AAGL5	LTO4	800.00 GB	0	800.00 GB	0%	No Media Pool
5						0%	
6						0%	
7						0%	

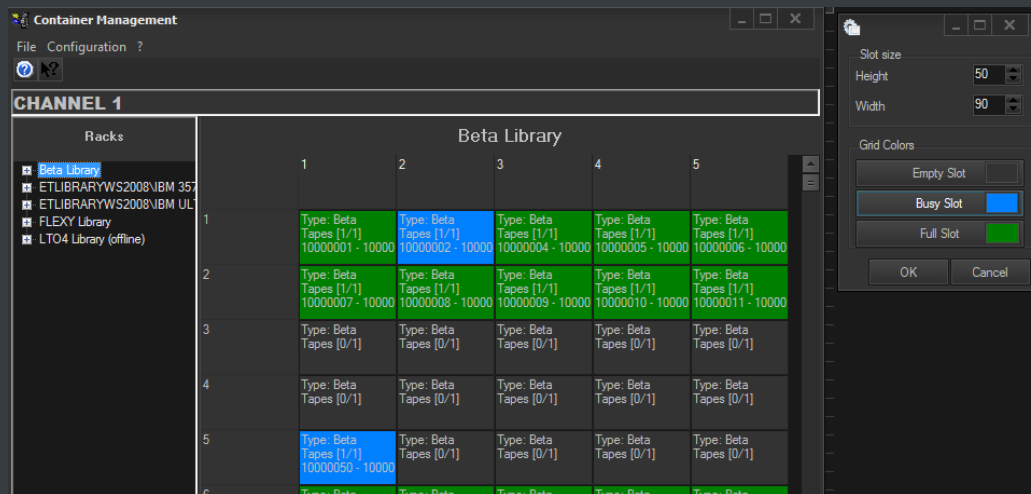
Column 1 VTRs / Drives

No.	Media Code	Video Standard	Free space	Used space	Total space	Percentage	Media pool
256	456AAGL5	LTO4	800.00 GB	0	800.00 GB	0%	MP-Commercials
257	458AAGL5	LTO4	800.00 GB	0	800.00 GB	0%	MP-Programmes

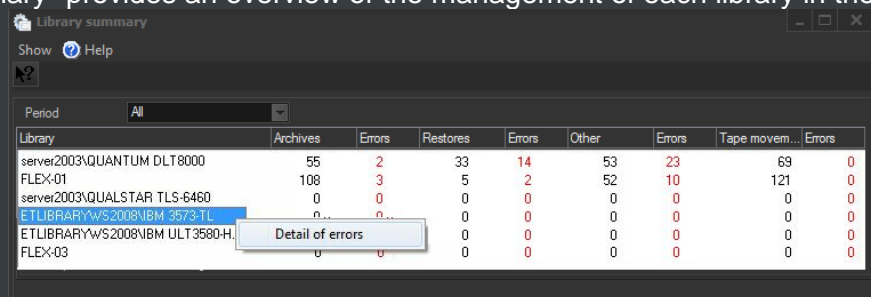
All tapes contained into a library can be consulted through a very useful “Tape Info” form which details some important information such as its code, type, barcode, title and contained assets:



A "Container Management" form displays an array-view of the slots contained within Racks and provides visual information on their space status (e.g. green=empty, yellow=used, red=full):



A "Library Summary" provides an overview of the management of each library in the system:



▼ 5.1.3. Tape Loan

Tape Loan is the module that allows managing all information related to the borrowing and return of tapes. Loans are recorded in the database detailing the loaner (company and person), the loan and return responsible, the actual loan data, the expected return data, the loaned media (tapes), being also possible to print a loan receipt document for each loan operation:

The screenshot shows a window titled "Tape Loan, michael, CHANNEL 1". It has a toolbar with various icons. Below the toolbar are three tabs: "Search Loan", "Loan Data", and "Tapes management". The "Loan Data" tab is active. It contains a form with the following fields:

- Code: [empty]
- Description: [empty]
- Company: API Media Center
- Person: Maxju
- Loan Resp.: michael
- Loan Date: 16/01/2013
- Return Resp.: [empty]
- Scheduled Date: 16/01/2013
- Notes: [empty]
- Return date: 16/01/2013
- Buttons: "Returned", "Clear Slots", "Media", "Receipt Print"

Below the form is a table titled "Tapes:" with the following data:

Returned	Code	Title
	10000001	10000001
	10000005	10000005

Stations will be allowed to search due-for-return tapes and consult pending loans, settle loan returns and print loan reports:

The screenshot shows the same window as above, but with the "Search Loan" tab active. It displays search rules and a table of results.

Search Rules:

- Company: [empty]
- Person: [empty]
- Tape Code: [empty]
- Loan Code: [empty]
- Tape Title: [empty]
- Description: [empty]
- Buttons: "Search Loans"

Search Rules:

- Unrecovered Loans: ☒
- Unexpired Loans: ☐
- Recovered Loans: ☐
- Expired Loans: ☐
- Cancelled Loans: ☐
- Start Date: 16/01/2013
- Scheduled Date: 16/01/2013
- Return date: 16/01/2013

Results Table:

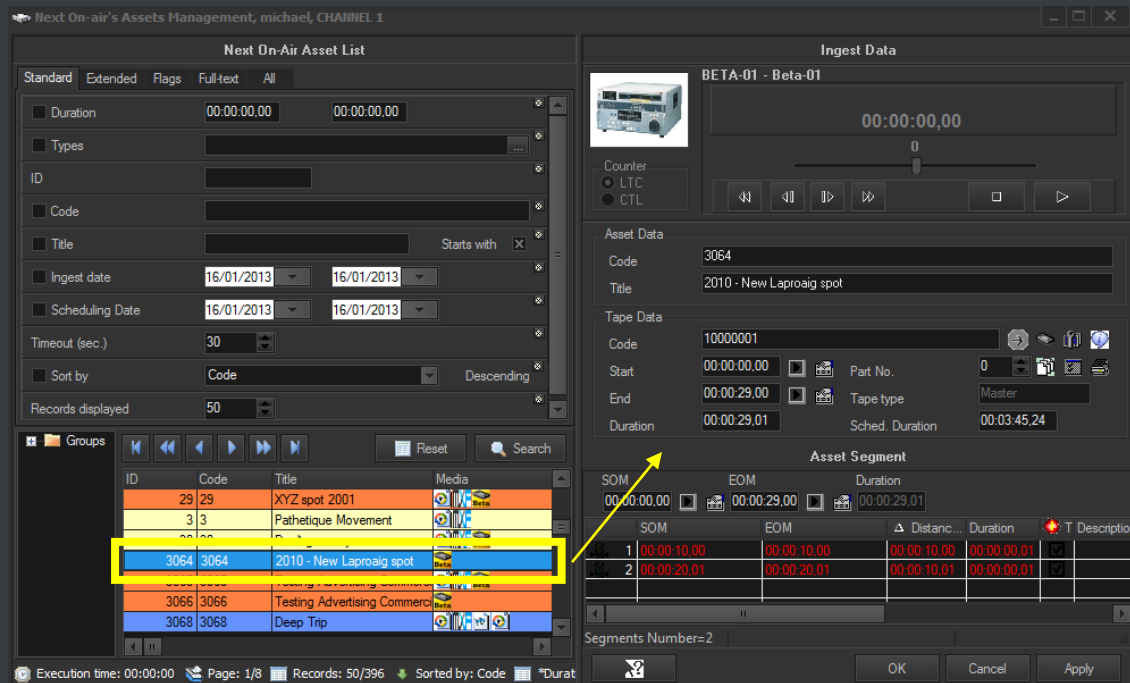
Company	Person	Start	Scheduled	Representative
API Media Center	Jules	16/01/2013	16/01/2013	michael

Tapes Table:

Code	Title
10000001	10000001
10000005	10000005

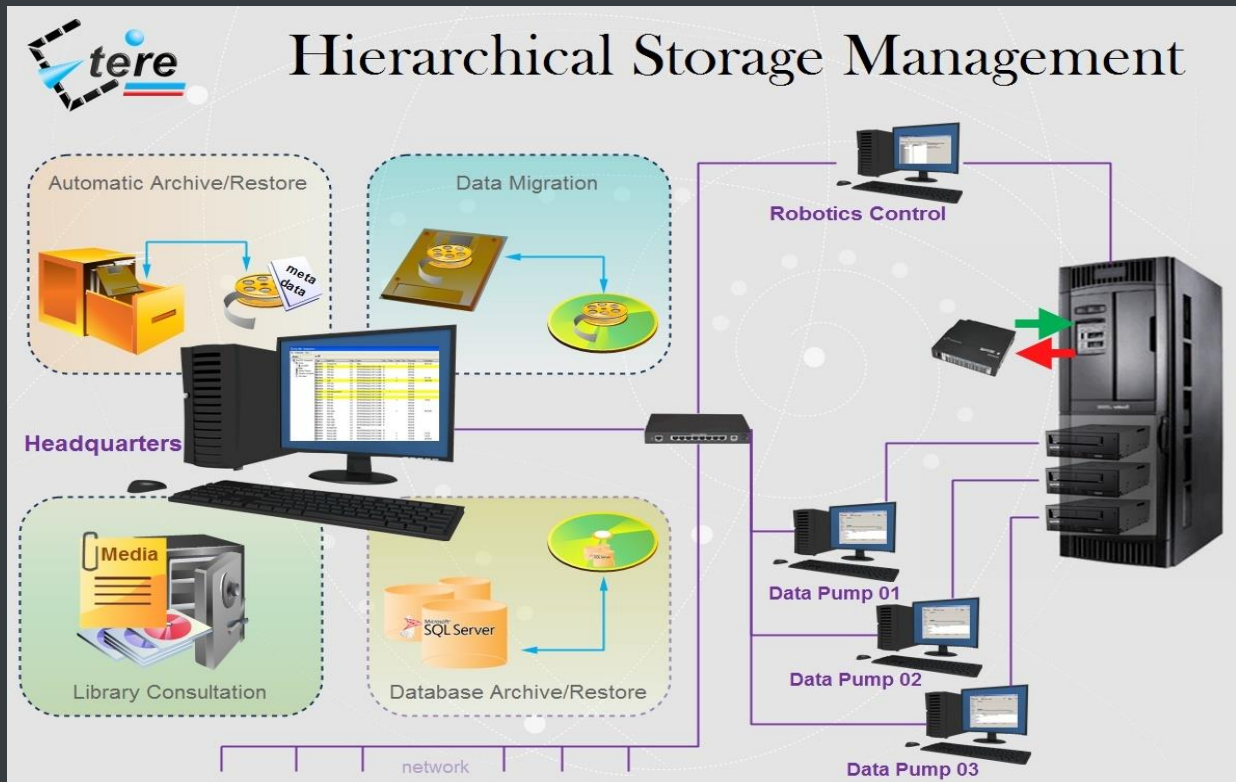
▼ 5.1.4. Tape Manager

Tape Manager allows assigning new or existing tapes to assets, detailing the information required for their subsequent recording (e.g. SOM, EOM, EDL instructions, split parts):



▼ 5.2. HSM: A tape-based archiving

LTO tape libraries present in the station will be managed by **Etere HSM**, the cost-effective solution to radically streamline the management of expensive tape libraries; allowing stations to optimize the migration of contents including high and low versions as well as associated metadata.



HSM improves the management of libraries by controlling their mechanical movements through the HSM Robotics Control and HSM Data Pump applications, which are able to run several data pumps on different machines to boost their throughput, while offering access to real-time logs, reports and statistics.

Etere HSM - Headquarters

File Configuration Tools ?

Monitor MASTER/CLONE

Etere HSM - Headquarters

Servers

Media

Workflows

Operator Requests

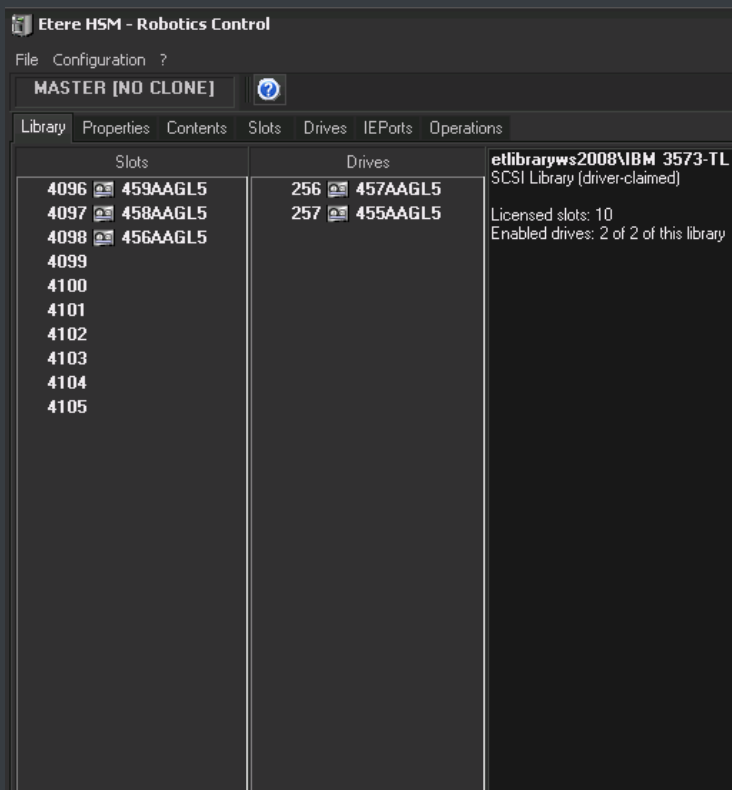
Work queue

Tape	Media Pool	Slot	Drive	Used	Test	Free space	Used Space	Space deleted	Library
0008B3L5	MP MAIN	3037	1002	X		0 bytes	1,30 TB	138,38 GB	HSM1\SONI
0008B4L5	MP MAIN	3012		X		54,00 MB	1,38 TB	0 bytes	HSM1\SONI
0008B5L5	MP MAIN	3012		X		4,15 GB	1,37 TB	0 bytes	HSM1\SONI
0008B6L5	MP MAIN	3004		X		4,16 GB	1,38 TB	0 bytes	HSM1\SONI
0008B7L5	MP MAIN	3074		X		13,13 GB	1,37 TB	0 bytes	HSM1\SONI
0008B8L5	MP MAIN	3099		X		1,36 TB			HSM1\SONI
0008B9L5	No Media Pool	3003		X		1,23 TB	156,16 GB	108,91 GB	HSM1\SONI
0008BAL5	MP MAIN	3007		X		195,00 MB	1,38 TB	0 bytes	HSM1\SONI
0008BBL5	MP MAIN	3005		X		587,00 MB	1,38 TB	0 bytes	HSM1\SONI
0008BCL5	MP MAIN	3011		X		370,00 MB	1,38 TB	89,46 MB	HSM1\SONI
0008BDL5	MP LOWRES BKP	3018				1,36 TB			HSM1\SONI
0008BEL5	MP LOWRES MAIN	3021				1,36 TB			HSM1\SONI
0008BFL5	MP MAIN	3013		X		2,12 GB	1,38 TB	0 bytes	HSM1\SONI
0008BGL5	MP MAIN	3002		X		1,38 GB	1,38 TB	0 bytes	HSM1\SONI
0008BHL5	MP MAIN	3019		X		5,08 GB	1,38 TB	0 bytes	HSM1\SONI
0008BJL5	No media pool2copy	3006				1,36 TB			HSM1\SONI
0008BKL5	No media pool2copy	3016				1,36 TB			HSM1\SONI

Page 1 (0008B3L5-0008CJL5) Records: 50/101

Scheduling: 00:12 sec Automatic operations: 42:01 sec Workflow check: 00:12 sec Maintenance Time: idle

Etere HSM distinguish four different archiving levels into a broadcasting workflow, these levels required distinct access times which vary from 0 minutes (video server) to 15 minutes (standard video tapes). All these levels are managed “virtually”, that is, you can use logical devices (metadevices) based on physical devices to free design your storage layout, enriching in this way the entire system with the benefits derived from the use of metadevices:



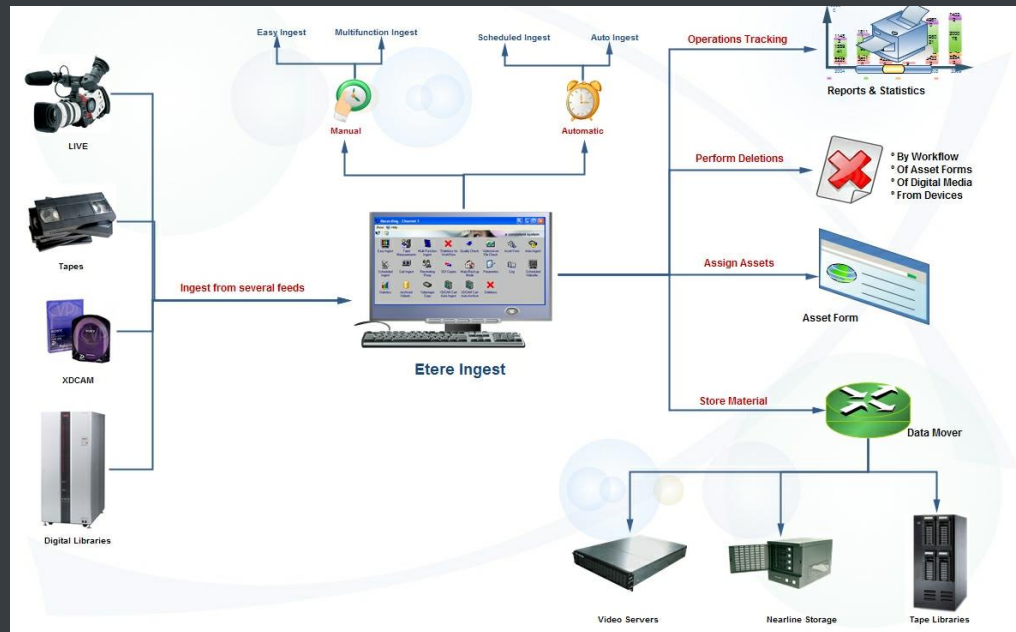
- Carry out loan-balanced movements on an intelligent multi-volume scenario,
- Extend your storage space by joining physical devices into one metadvice, without altering the archiving workflow,
- Categorize your storage devices by dividing them into metadevices with no partitioning required,
- Space limits and storage distribution are defined by the user and not by devices itself,
- Classify metadevices in media pools in order to automate their management,
- Background defragmentation and online/offline tape management,
- Scheduled archiving of devices, media contents and entire databases.

Etere HSM forms a tandem with Etere Data Mover to be the only solution in the market with an embedded multi-level and multi-rule cache that offers an intelligent management which ensures the best performances with low investments.

Moreover, owing to Etere's comprehensive character, these applications are perfectly integrated with other modules (e.g.: Ingest, EtereWeb, etc.) to allow all these modules to use shared resources and have unlimited communication.

▼ 5.3. Ingest: A versatile acquisition system

Etere ingest is a versatile set of modular applications that significantly improves the digitization process inside a broadcasting system:



▼ 5.3.1. Wide range of acquisition modes

Ingest covers any particular requirement of the entire process such as automatic and scheduled ingests:

Scheduled Ingest - CHANNEL 1

Multichannel ingest 16/01/2013 13:25:20 - Wednesday

Channel 1 Channel 2 Channel 3

Channel	Next ingest	Type	ID	Code	Description
1	Start				
				Duration	Start Mode
				Stop Mode	

Resources	Status	Counter	Free space	File
HQ 1	STOP	00:00:00,00	21:37:45,00	
BK 0
LR 0
VTR 1

Test Resources

Scheduled ingest operations Errors

DATE	START	DURATION	CH	ID	TIMERECD	TYPE	ID_FILMATI	DESCRIPTION
20090618	14:53:24.04	00:00:10.00	1	22		S	0	Recording of "Oasis - She's"
20090618	22:00:00.00	02:00:00.00	1	20		S	0	Juventus - Real Madrid Cham

Automatic ingest

Etere Ingest - Scheduled Ingest

Multichannel ingest 16/01/2013 13:23:49 - Wednesday

Ingest operations Config Planning

Show:

- Planned single ingests
- Planned periodical ingests
- Planned scheduled-Live ingests
- Completed ingest operations

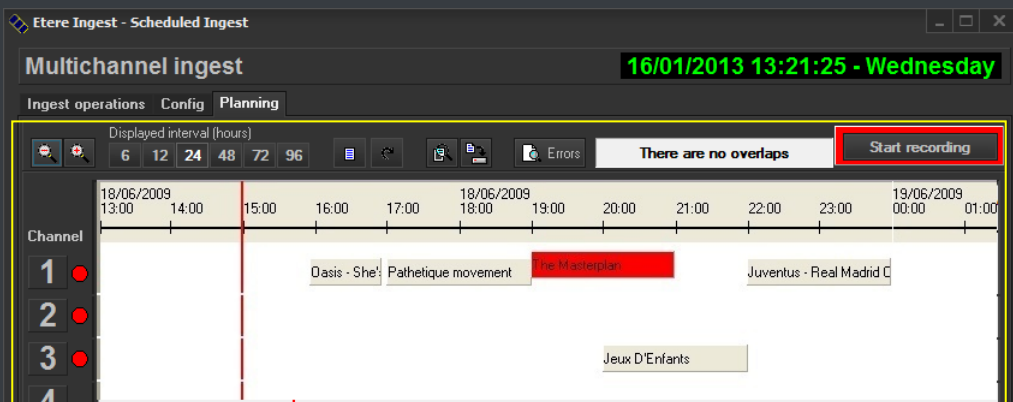
Channel: ALL
From: 16/01/2013

Search

ID	TYPE	CHANNEL	DATE	TIME	DURATION	DESCRIPTION	ASSET ID	Event code	STATUS	M
23	S	1		00:00:00.00	00:00:00.00		0			
29	S	1		00:00:00.00	00:00:00.00		0			
22	S	1		15:55:36.02	01:00:00.00	Oasis - She's electric	29	E		
27	S	1		17:00:00.00	02:00:00.00	Pathetique movement	3			
28	S	1		19:00:00.00	02:00:00.00	The Masterplan	61			
30	S	3		20:00:00.00	02:00:00.00	Jeux D'Enfants	70			
20	S	1		22:00:00.00	02:00:00.00	Juventus - Real Madrid Champions League 2009	2940			

Schedule ingest

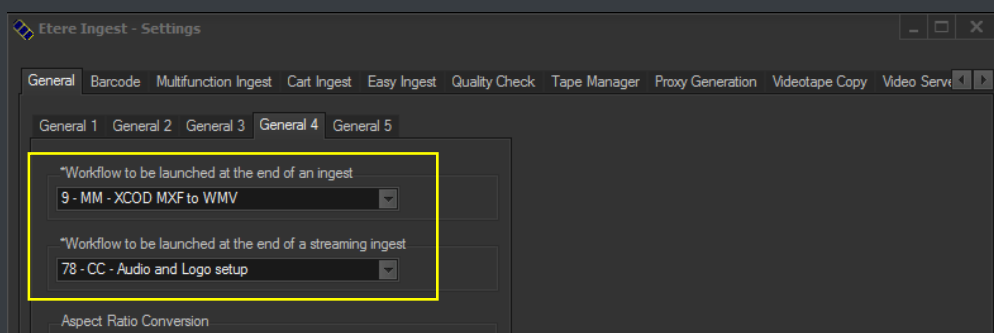
Etere Ingest supports multiple parallel ingest streams, managed automatically either on a single workstation or across various workstations, allowing also to schedule the video files to be ingested:



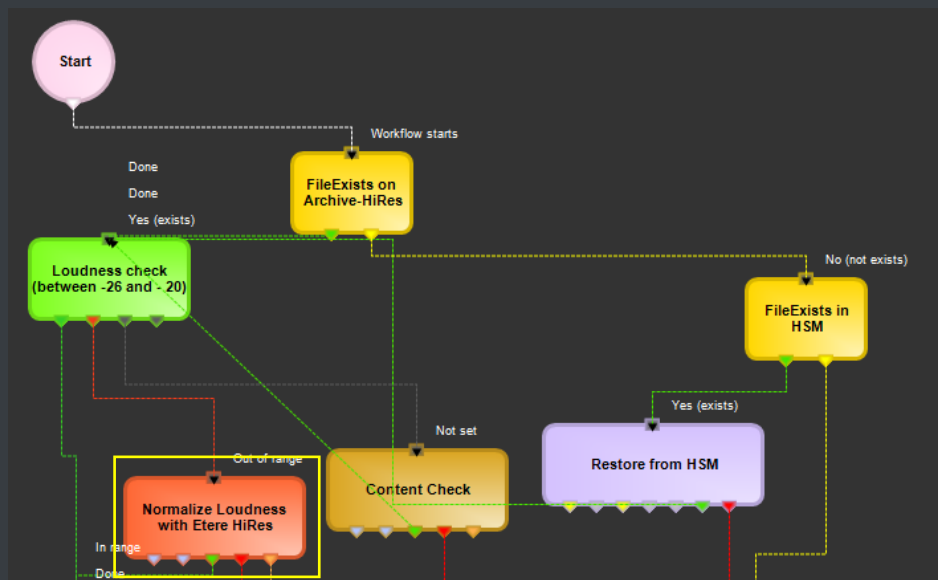
Planning View

▼ 5.3.2. Automatic workflow actions

Once ingested, video files are transcoded into the specific format of the destination device on which they will be stored, in the same way, video files are transcoded each time they are moved from one device to another (e.g.: archiving, playout, etc.):

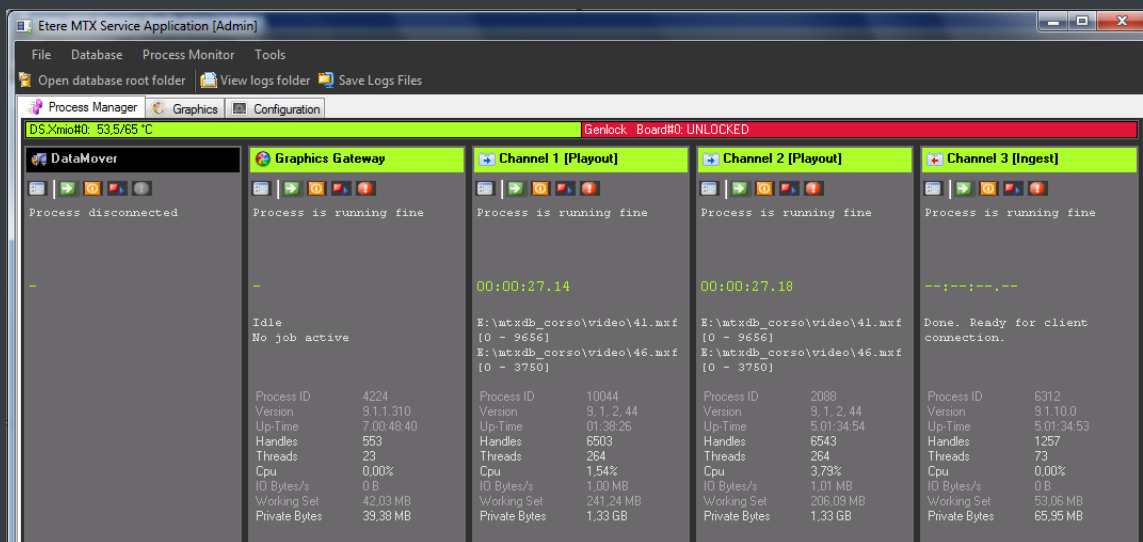


The image below illustrates how Etere allows setting the workflow to be launched at the start and end of an ingest process to for example, create a low resolution version or normalize the audio of captured contents:



▼ 5.4. MTX: Digital capture based on Matrox technology

Etere MTX is the application offered by Etere to drive the most popular HD/SD Matrox digital video editing platforms, it combines the professional effects technology of a wide range of industry standard codecs with an Etere system, allowing to capture in both high and standard definition formats over digital inputs.



The highly integrated, end-to-end workflow streamlines all the core processes, MTX forms part of global Etere MAM solutions, thus allowing it to use the same metadata and interface available for ingest, content management, transmission control, traffic, archiving, and monitoring.

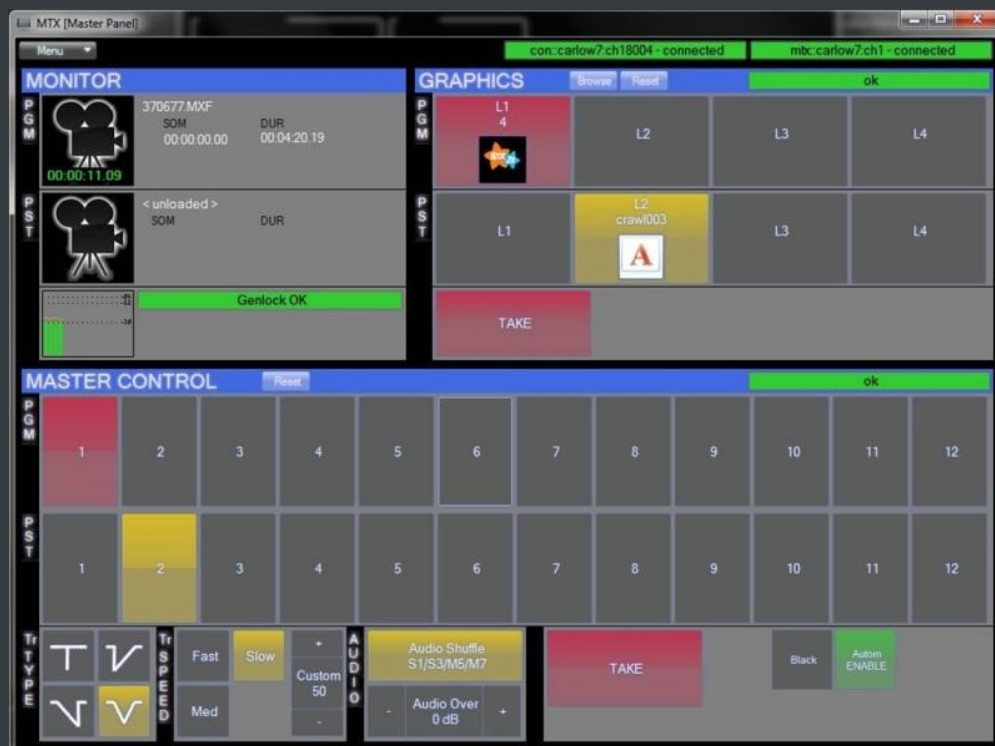
▼ 5.4.1. Robust IT solution

The multi-format ingest allows to use any codec and wrapper on the market, whereas for playout it can mix in real-time all types of footage on a timeline with more layers and/or effects, as well as parallel multi-format ingestions, all these under a user-friendly interface. Besides the common preset and preview bars, available on a friendly touch-screen graphic interface, MTX includes most graphics and audio functions such as:

- 8 logo layers with unlimited sizes
- 1 Crawl /CG
- Audio shuffling
- Audio control
- Dolby E Pass-through
- Video transitions

▼ 5.4.2. Master Control Panel

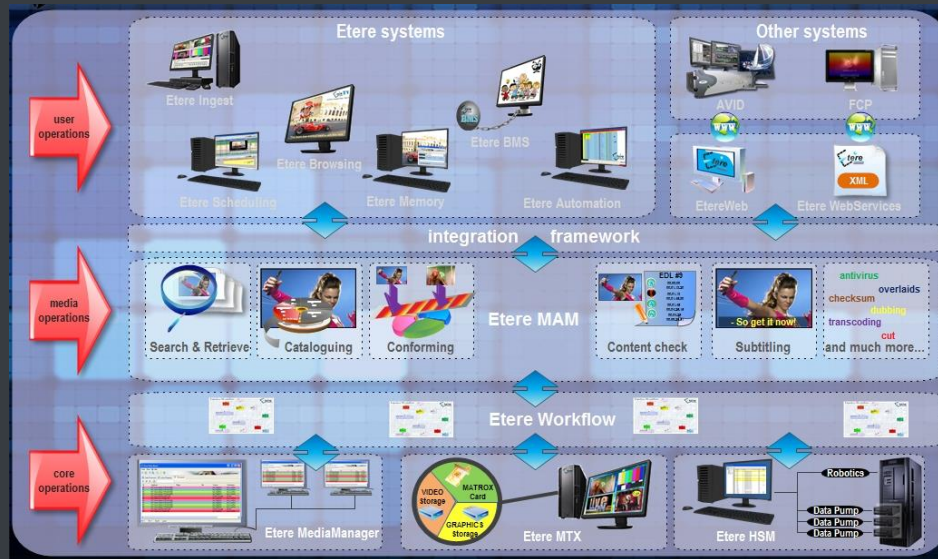
The **MTX Master Panel** is a standalone user graphical interface to allow operators to manually switch a master control, it combines the management of the inputs/outputs of a master control with its preset and take functions, allowing also to customize the various on-screen descriptions.



The **MTX Master Panel** requires only a card with 1 input and 2 outputs to deliver full Master Control functionalities, with a really cost effective system, and the possibility of working in SD and HD without any additional cost. The **MTX Master Panel** will provide all the standard functions of a master control with just a touch of the monitor.

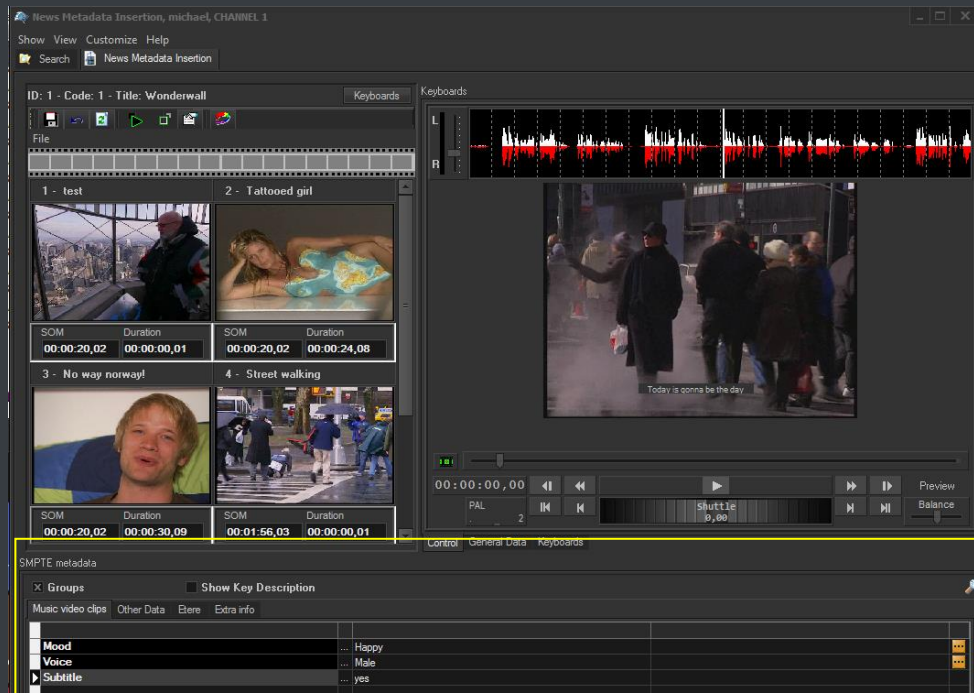
▼ 5.5. MAM: Browsing, editing and more

MAM will allow operators to store information, search media EDL, and transfer EDL-based media to the playout server and the editing systems:



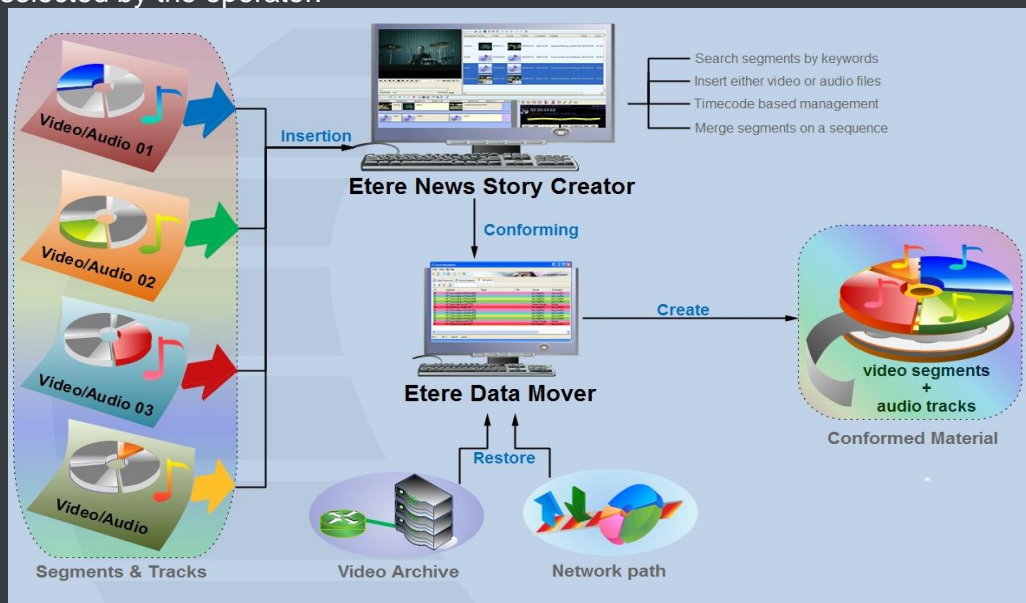
▼ 5.5.1. Media cataloguing and Metadata insertion

Etere enables search, browse and cataloguing of rich media, a very intuitive interface establishes a bridge between the ingest department and the production department, allowing low-res proxy browsing over the network (contents to be browsed simultaneously from various workstations):

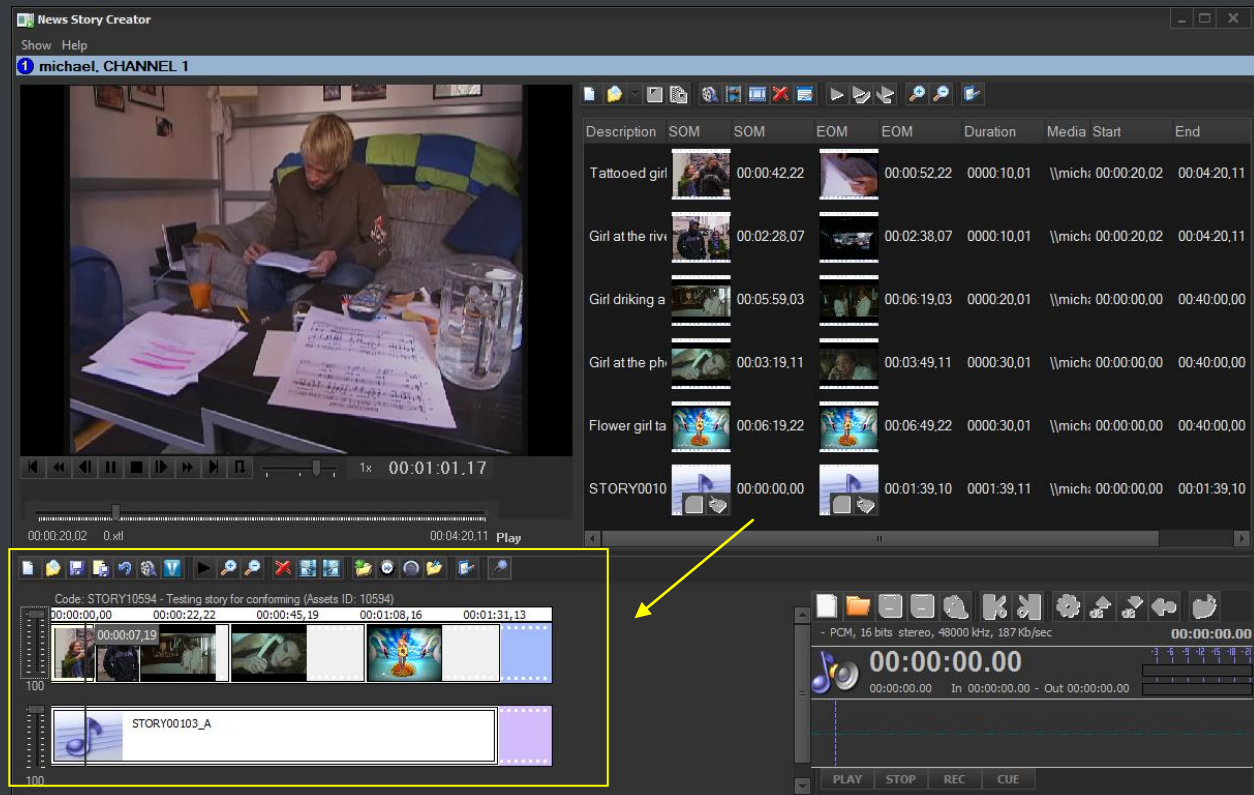


▼ 5.5.2. Video conforming and audio over

MAM permits to join cut segments from different sources, to create a single final video file containing all scenes selected by the operator:



Use this function to, for example, dubbing contents by overlaying audio tracks over a video(s):

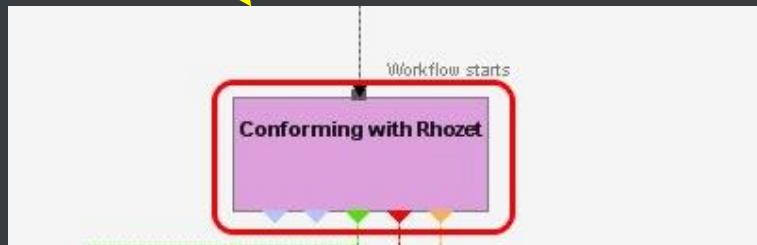
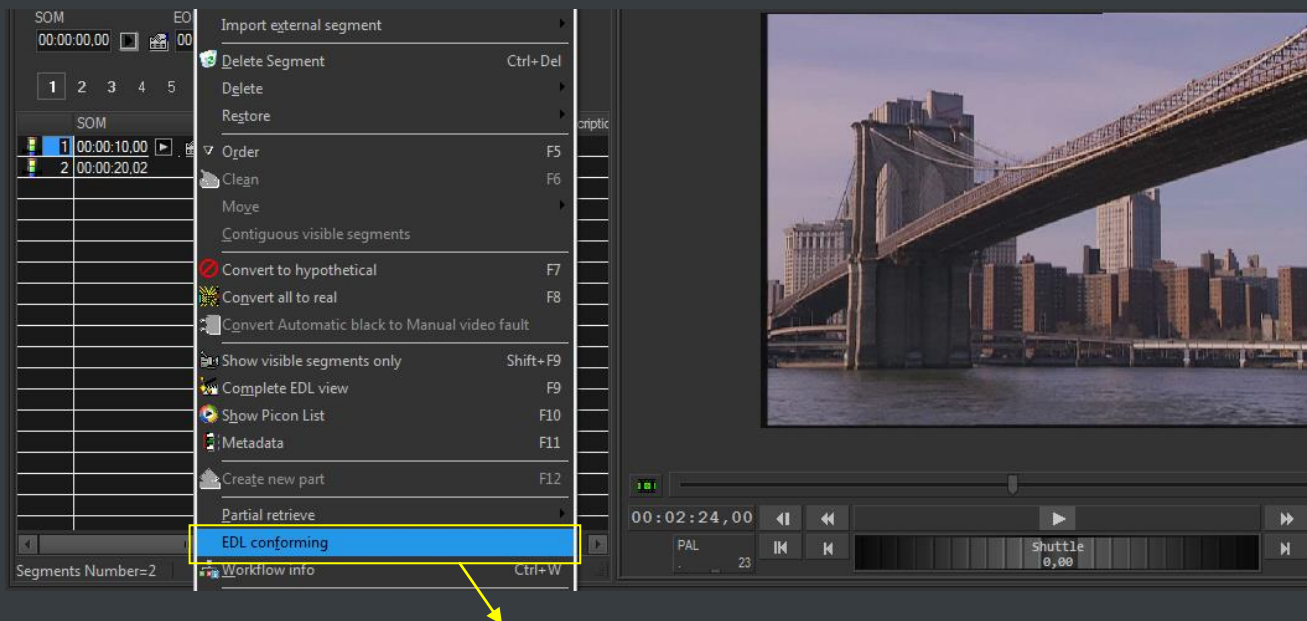


The image above illustrates the user-friendly interface on which operators create new video sequences of MAM captions which includes all relevant metadata associated to the inserted scenes.



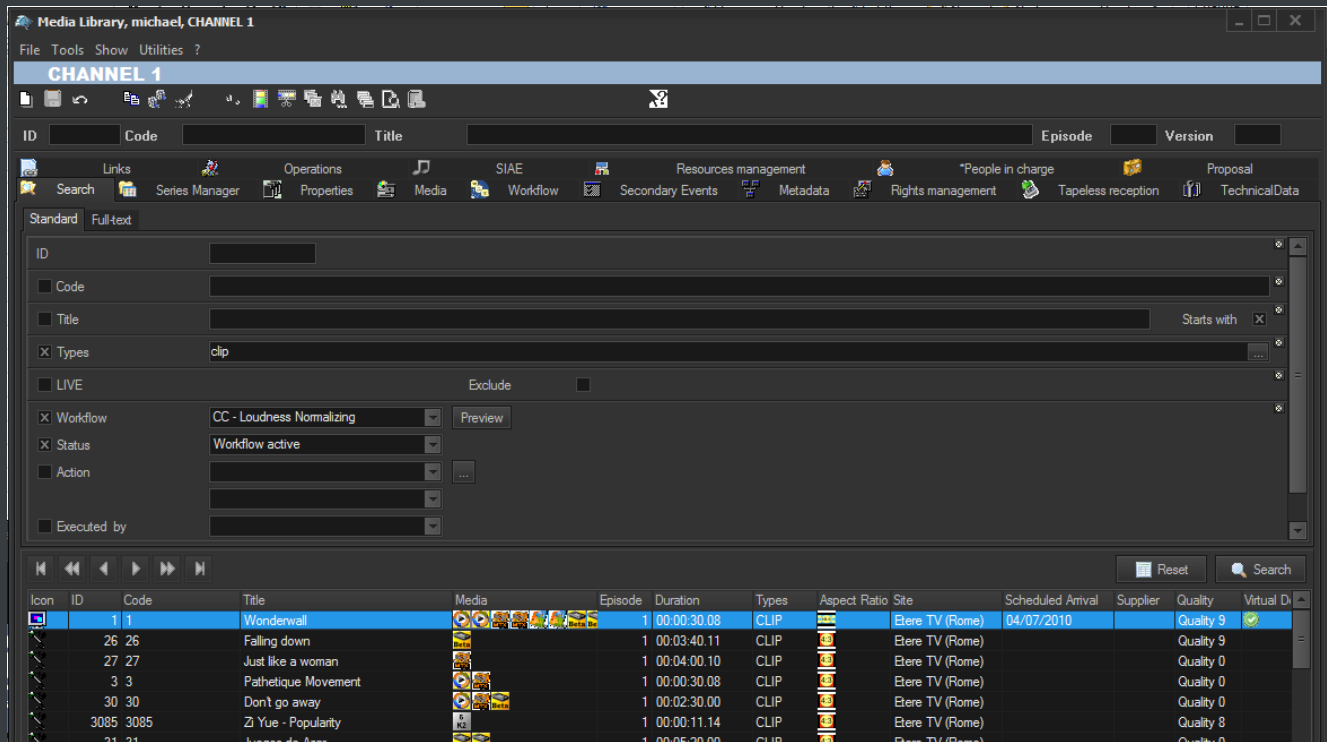
▼ 5.5.3. Partial media restore

Etere also allows restoring only a part of video files by creating either high or low resolution video files including specific segments described on the source video EDL, it is important to note that as usual on Etere's operations, the conforming of video files is fully performed via workflow:



▼ 5.5.4. Search engine

Etere media management applications are enabled with a complete, versatile and powerful search engine which allows users to search for assets and interact with them. The user is able to search assets based on their information stored in the database. Results are displayed according to custom properties. Summarizing, Etere provides a robust search engine, which ensures you to instantly find the results that meet his criteria. Among the several searching features which are available in this section, we can mention the following ones:



- Search for assets based on keywords related to database fields,
- A Full-text search can be carried out across the various fields of the assets,
- Full-text results are sorted based on their degree of relevance,
- Users can search for keyword synonyms to extend the range of results,
- Searches can be saved as profiles,
- Batch modification functionality, allows user to modify several assets at the same time,
- Customizable tabs and fields, drag & drop enabled,
- The last arrangement of tabs and fields is stored,
- Results can also be grouped by their types, genres or artists,
- Allows the user to add, launch and view workflows on-the-fly,
- Custom configuration depending on the place from which the Media Library is launched,
- Possibility of filtering results by their SMPTE metadata or Metadevice allocation.

▼ 5.5.5. Logged operations

A dedicated section offers a list of all the operations performed on any asset (e.g. media linked, secondary event modified, metadata inserted, etc.):

Media Library, michael, CHANNEL 1

File Tools Show Utilities ?

CHANNEL 1

ID 1 Code 1 Title Wordenwall Version 1

Search General Data Properties Media Workflow Resources management Secondary Events Metadata Rights management

Tapeless reception TechnicalData SMPTE Metadata Links SIAE Operations Keys/Keyboards People in charge Proposal

Date	Status	Operation	Tape	Part	Me Field	Machine	Operator	Source	Destination	Process	User	Notes
12/03/2013 15:45:52	😊	Edit				MICHAELW7	michael			ASSET MANAGER		Delete metafile from Multisuppo
12/03/2013 15:45:53	😊	Edit				MICHAELW7	michael			ASSET MANAGER		Delete metafile from Multisuppo
12/03/2013 15:45:54	😊	Edit				MICHAELW7	michael			ASSET MANAGER		Delete metafile from Multisuppo
12/03/2013 15:45:55	😊	Edit				MICHAELW7	michael			ASSET MANAGER		Delete metafile from Multisuppo
12/03/2013 15:45:56	😊	Edit				MICHAELW7	michael			ASSET MANAGER		Delete metafile from Multisuppo
12/03/2013 15:45:57	😊	Edit				MICHAELW7	michael			ASSET MANAGER		Delete metafile from Multisuppo
12/03/2013 15:45:58	😊	Edit				MICHAELW7	michael			ASSET MANAGER		Delete metafile from Multisuppo
12/03/2013 15:47:06	😊	Transcoding				MICHAELW7	michael	MATROX MTX NLE		XCode Insert Subtitles into MX		\\michaelw7\My FTP Server\N
12/03/2013 15:48:24	😊	Transcoding				MICHAELW7	michael	MATROX MTX NLE		XCode Insert Subtitles into MX		\\michaelw7\My FTP Server\N
12/03/2013 15:49:55	😊	Transcoding				MICHAELW7	michael	MATROX MTX NLE		XCode Insert Subtitles into MX		\\michaelw7\My FTP Server\N
12/03/2013 15:51:03	😊	Transcoding				MICHAELW7	michael	MATROX MTX NLE		XCode Insert Subtitles into MX		\\michaelw7\My FTP Server\N
12/03/2013 15:57:57	😊	Transcoding				MICHAELW7	michael	MATROX MTX NLE		XCode Insert Subtitles into MX		\\michaelw7\My FTP Server\N

Further reporting integration is also provided:

CHANNEL 1

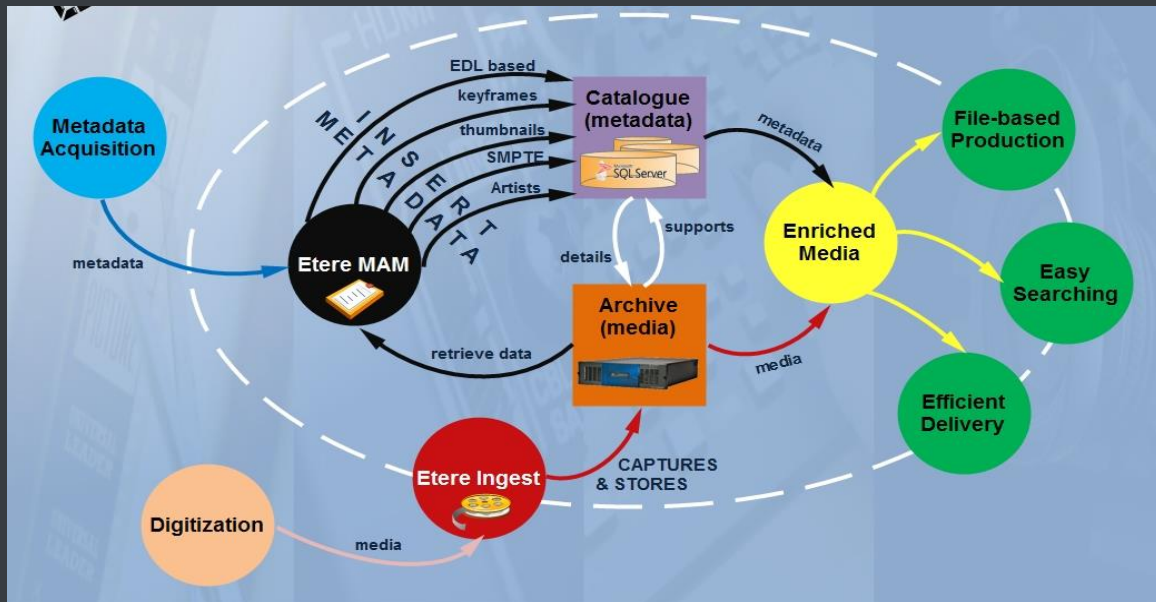
Media library logs

Asset: ID 3746 Code 3746 Type FILM

Date	Status	Operation	Machine	Operator	Process	Application
28/08/2012 14:4...	Done	Create asset	MICHAELW7	michael	STORED PROCEDURE [Sql Ser...	Asset form
28/08/2012 14:4...	Done	Edit	MICHAELW7	michael	ASSET MANAGER	Asset form
28/08/2012 15:1...	Done	Edit	MICHAELW7	michael	ASSET MANAGER	Asset form
28/08/2012 15:1...	Done	Edit	MICHAELW7	michael	ASSET MANAGER	Asset form
26/09/2012 16:0...	Done	Edit	MICHAELW7	michael	ASSET MANAGER	Asset form
26/09/2012 16:0...	Done	Generic opera...	MICHAELW7	michael	[Workflow]: RES - Dubbing (a...	Asset form
26/09/2012 16:0...	Done	Edit	MICHAELW7	michael	ASSET MANAGER	Asset form
26/09/2012 16:0...	Done	Edit	MICHAELW7	michael	ASSET MANAGER	Asset form
26/09/2012 16:0...	Done	Edit	MICHAELW7	michael	ASSET MANAGER	Asset form
26/09/2012 16:0...	Done	Generic opera...	MICHAELW7	michael	[Workflow]: RES - QUICK Gen...	Asset form

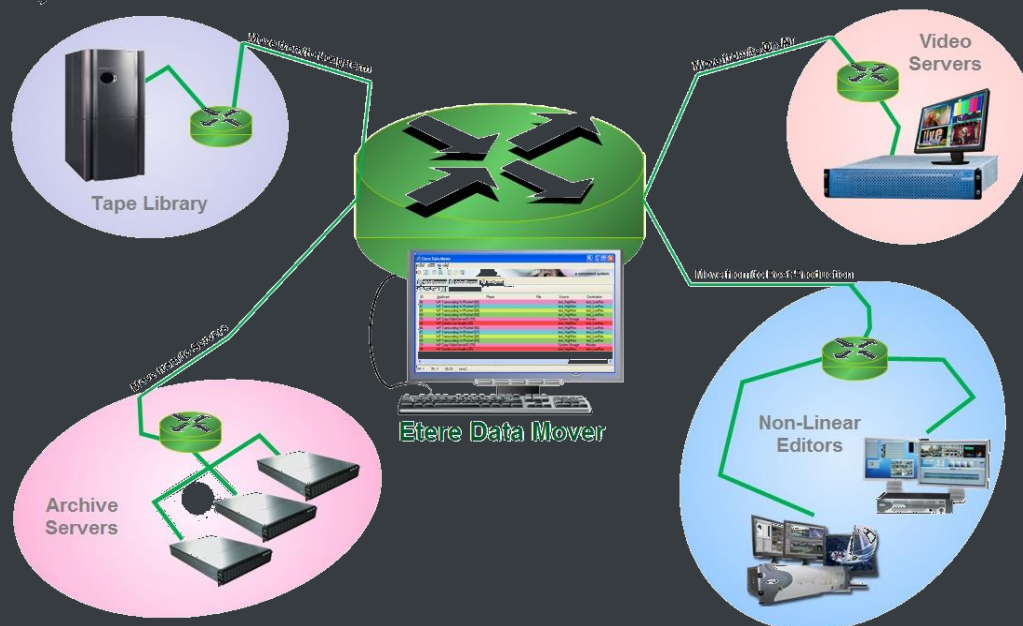
▼ 5.5.6. Integration between MAM and Ingest

MAM can be used along with Etere Ingest to enrich captured media contents and thus leverage all benefits of a file-based production including easy research and efficient delivery capabilities:



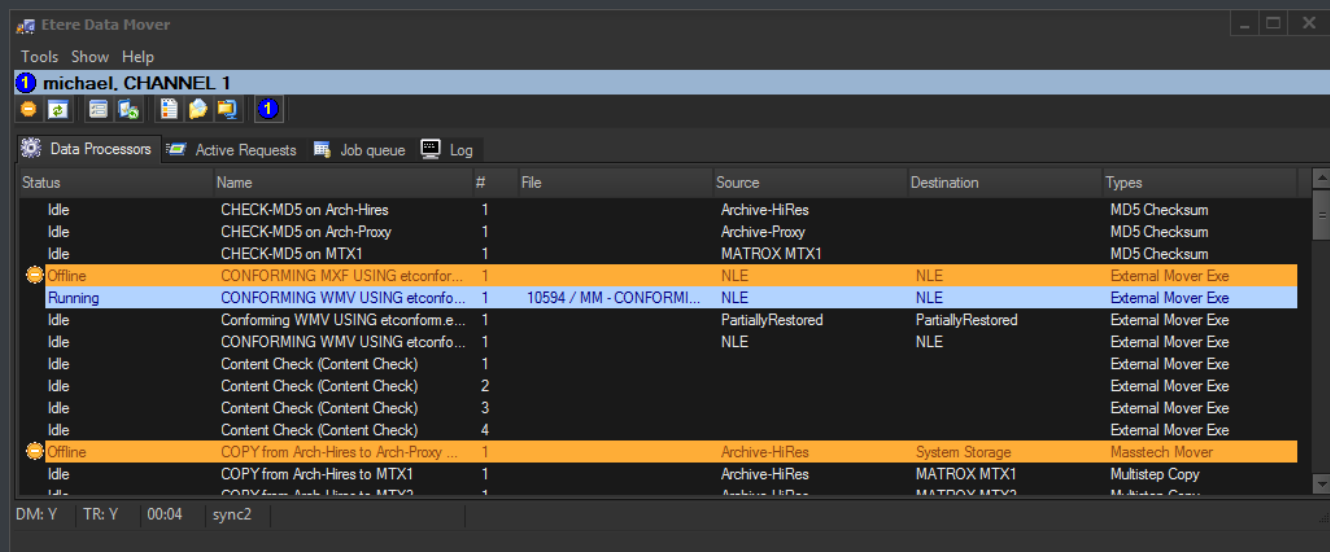
▼ 5.6. DataMover: Intelligent archiving and delivery

The Media Management solution proposed to encompass station's content transfer and archiving goes beyond of a simple copy concept by moving video files based on custom policies, transcoding video files when required and offering a full track of all operations.



▼ 5.6.1. Simple and user-friendly interface

Video contents will be transferred between the various departments (e.g.: near-line storage, archive, post-production, playout, browsing, and even non-Etere systems) by **Etere DataMover**; this migration process also includes rewapping and transcoding capabilities.



▼ 5.6.2. Logical management of data

Etere's approach is oriented to "virtualize" the entire media management process, improving it with flexibility, customization and most important cost-effectiveness. Etere manages (logical) metadevices instead of (physical) devices, this approach results in a wide range of possibilities for the media management, for example, it is possible to control with one click the available space of all metadevices:

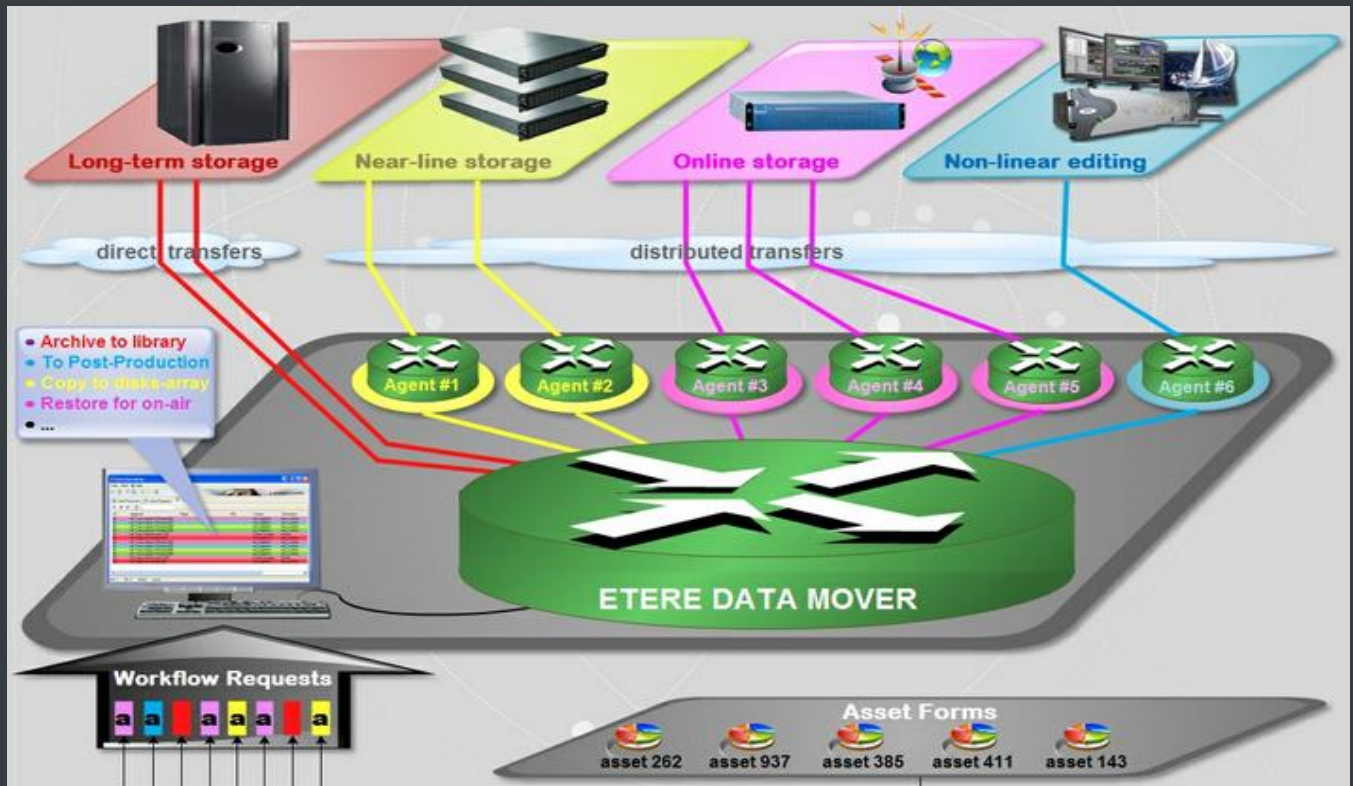
Device name	Total	Available	Free space	Notes
NLE-100	1.34 Tb	1.04 Tb	78%	2 volume(s)
NLE-220	686.50 Gb	535.78 Gb	78%	1 volume(s)
NLE-350	2.01 Tb	1.56 Tb	78%	3 volume(s)
OmniconLR			0%	1 of 1 volumes are unavailable
P2 Storage Server	4.69 Tb	3.66 Tb	78%	7 volume(s)
VS-MTX1	Not available	0.00 b	0%	
VS-MTX3	465.75 Gb	203.47 Gb	43%	

Data Mover is the application used to perform the physical storage and retrieval of video files, a typical Data Mover operation would be to move a video clip from a video server to an archive based on custom actions which are defined and executed via workflow.

▼ 5.6.3. Distributed parallel jobs

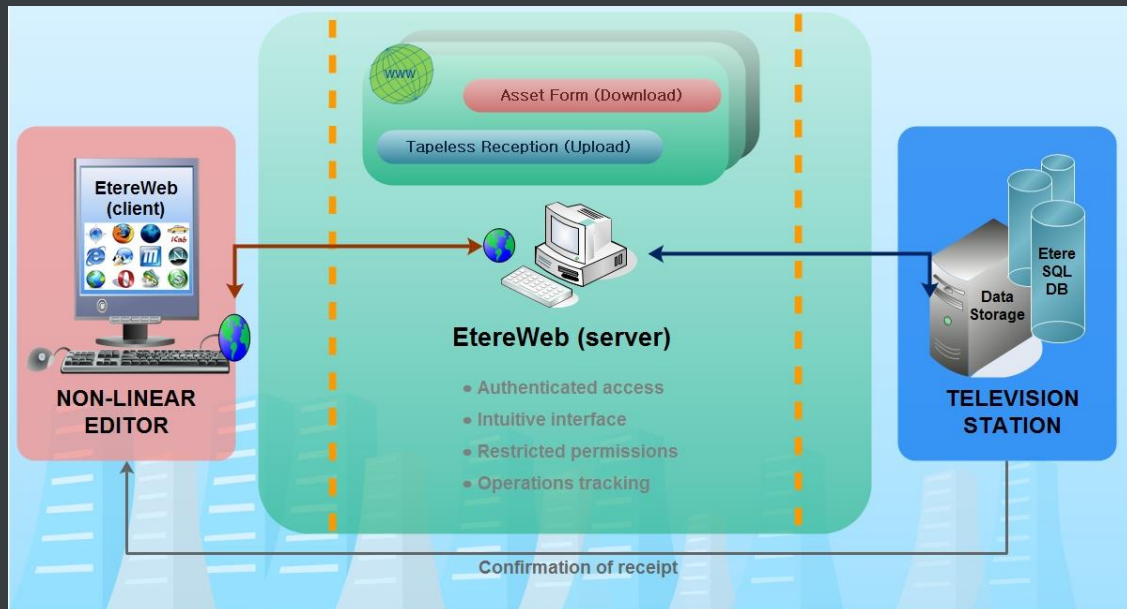
Data Mover is capable to provide both, distributed processing for using an independent agent per data transfer and parallel processing for simultaneously performing different instances of one data

transfer; these features will allow stations to exploit high computing resources to use a single workstation to perform multiple transfers, thus enhancing the flexibility, scalability and fault-tolerance of the entire Etere system.

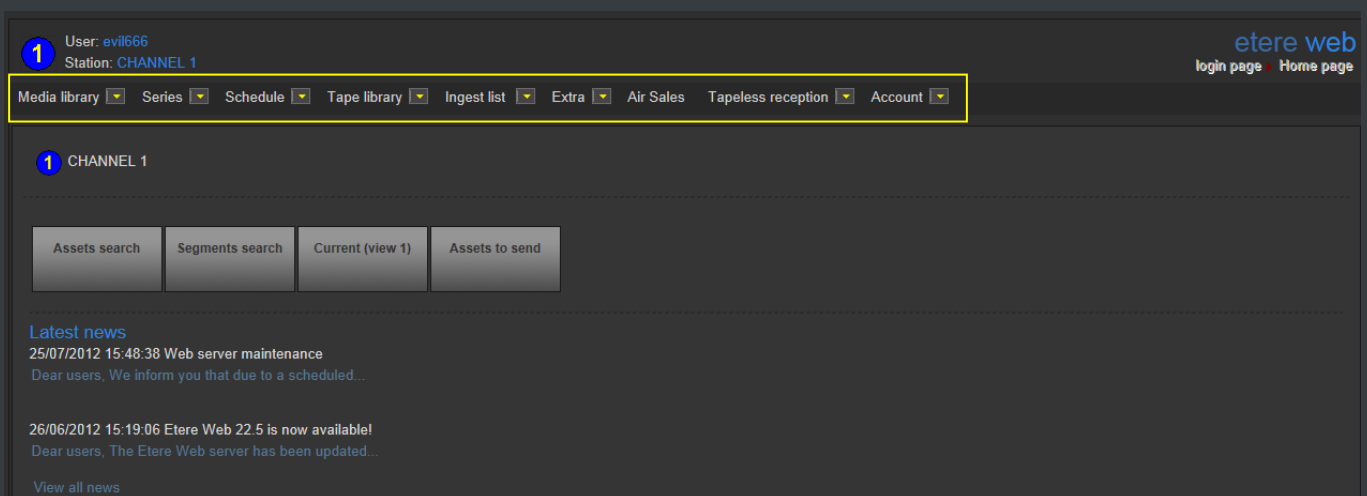


▼ 5.7. EtereWeb: Post-production integration

Etere's NLE integration will allow stations to achieve a tight integration with NLE systems, without using insecure "hot folders" or "ftp open sites" but including full tracked uploads (i.e. digital receipt of files) and immediate workflow triggering. EtereWeb is best solution for integrating NLE systems (e.g. FCP, Avid, Edius) with the station's broadcast workflow; it provides non-linear editors with an authentication web portal for managing media contents through a user-friendly interface:



EtereWeb web service supports all major browsers including Microsoft Internet Explorer, Mozilla Firefox and Apple Safari; thus ensuring the reliability and quality of the service. EtereWeb integrates the latest streaming technologies for video distribution and a comprehensive rights management system that gives to authorized users the possibility to access via web to a user-friendly interface:



▼ 5.7.1. Authenticated access and rights

In order to ensure that only authorized persons access the web service, EtereWeb counts with an encrypted authentication method on which users must count with a username and password in order to enter the web portal:

▼ 5.7.2. Digital delivery

Tapeless Reception is an extension of **EtereWeb** designed with the purpose of offering an efficient solution for digital content delivery between external agencies and stations, it integrates the latest streaming technologies for video distribution and a comprehensive rights management system that gives to authorized users the possibility to access via web to a user-friendly interface:

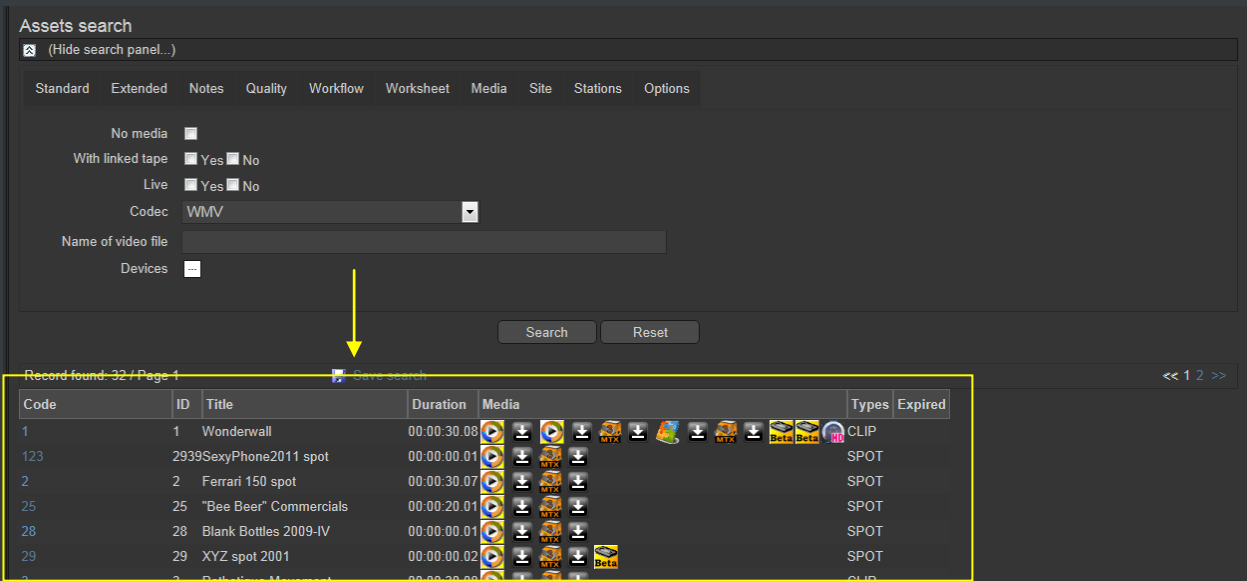
Code	Description	Scheduled arrival	
28	Blank Bottles 2009-IV	01/09/2010	Select
PromoE02	PROMO EtereTV 002	30/04/2010	Select
3082	"Bee Beer" 2012 (1st-quarter)	19/01/2010	Select
ADV-0001	New Collection "EMO CLOTHES" 2010-I	31/12/2009	Select
3065	Testing Advertising Commercial 01	31/12/2009	Select
PromoE03	PROMO EtereTV 003	01/12/2009	Select
41	Alejandro Sanz - Mi soledad y yo	20/11/2009	Select
55	Cuenta la historia	20/11/2009	Select
VirtualAsset01	Wonderwall	04/08/2009	Select

Etere provides **Tapeless Reception** to allow remote clients to deliver digital content into the library, this web portal will permit other station's areas (e.g. NLE systems, News providers, MAM systems) to easily and safely upload content (and its related metadata) into a web server; once content is delivered (i.e. uploaded), a post-upload workflow (e.g. nearline archiving) is automatically triggered and a confirmation email is sent to the deliverer (attaching a proxy video) and the station operator.

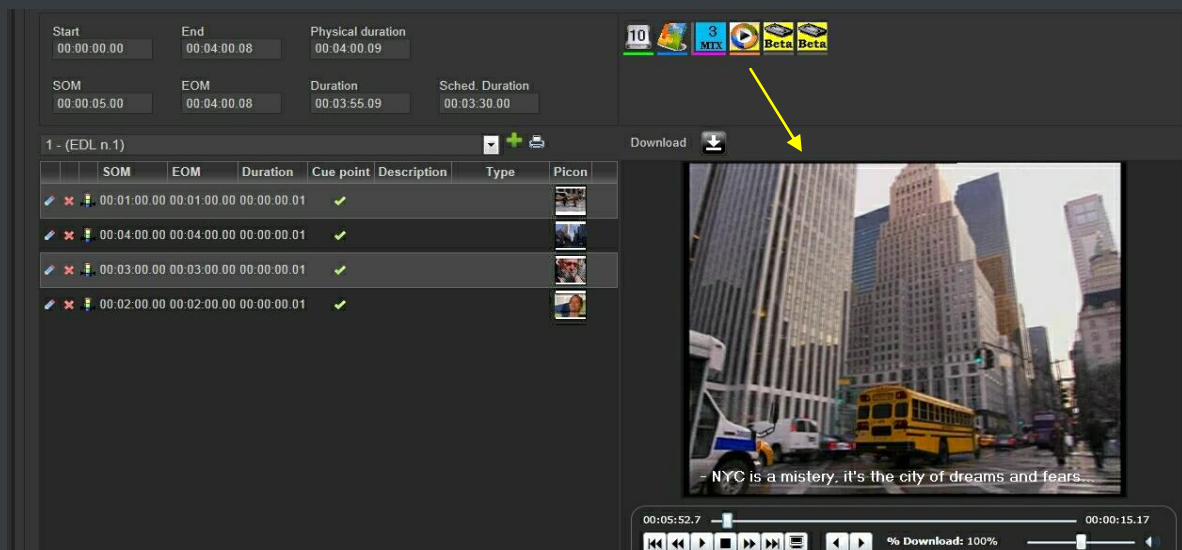
Additionally, a customizable security policy will allow the station to determine different levels for accessing the files delivered through the web portal, thus making possible, for example, to dictate that a certain web user (e.g. NLE system) will be allowed to retrieve only its own delivered files whereas another web user (e.g. MAM system) to retrieve its own delivered files and also other user's files.

▼ 5.7.3. Search, retrieval and preview

The Quick and robust search engine of **EtereWeb** allows users to easily search and preview assets, even during the search:



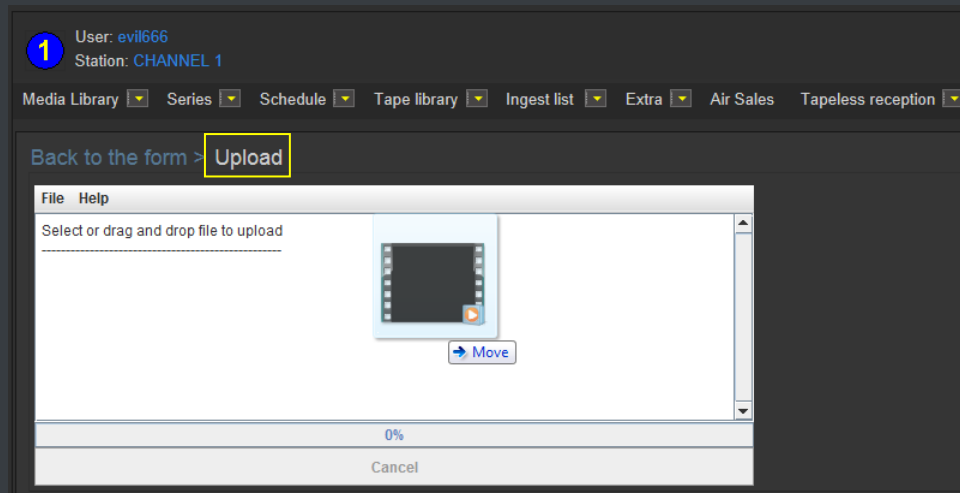
The Media tab holds information regarding the media associated to the asset, time code details and EDL configuration. By double clicking on any media item, if available, it will be available the preview and download of the asset:



▼ 5.7.4. Selective upload interface

EtereWeb allows uploading media files into the server through a simple and intuitive wizard procedure. Depending on the upload interface set in the system, it will be possible to upload the media file using either a java-applet or an active-x interface:

- **Java-Applet:** This interface allows dragging and dropping the media file(s) to be uploaded from the file explorer into the web browser:



- **Active-X control:** This interface allows browsing for the media file(s) to be uploaded, being also possible to create a zip file for uploading an entire directory:

User: evil666
Station: CHANNEL 1

Media library ▾ Series ▾ Schedule ▾ Tape library ▾ Ingest list ▾ Extra ▾ Air Sales ▾ Tapeless reception ▾

Back to the form > **Upload**

d: []

D:\
MyStorage
My FTP Server
P2
CONTENTS
PROXY

0063FX.wmv

File Selected: D:\MyStorage\My FTP Server\P2\CONTENTS\PROXY\0063FX.wmv

Upload and update

File Name: 0063FX.wmv
File Size: 2.20 MB
0

ABORT UPLOAD START UPLOAD

Wait...

▼ 5.7.5. Pre/Post upload processing

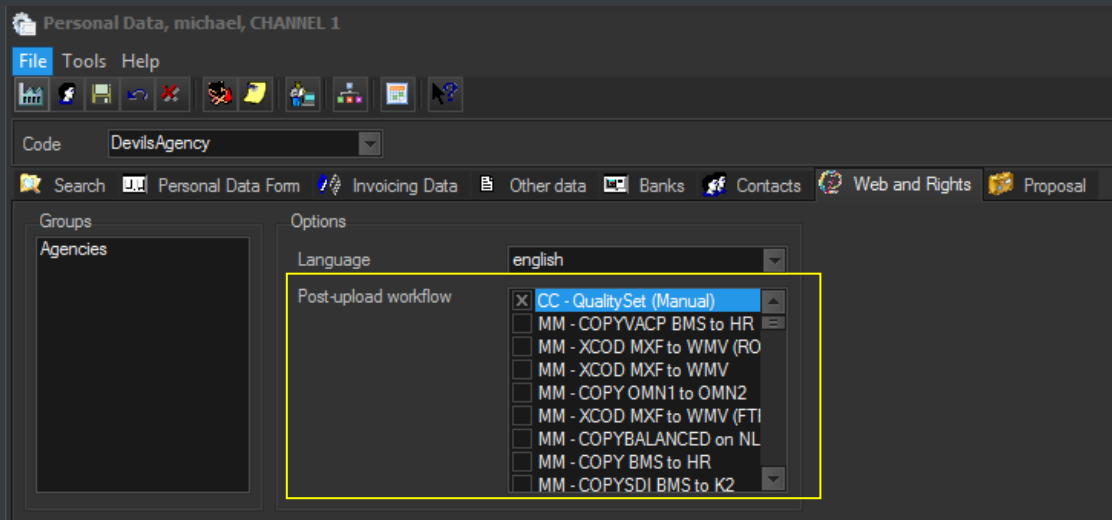
EtereWeb allows setting different workflows to be launched at different stages of the web management, for example, it is possible to configure the following workflows:

- Pre-upload workflow:

Web Settings

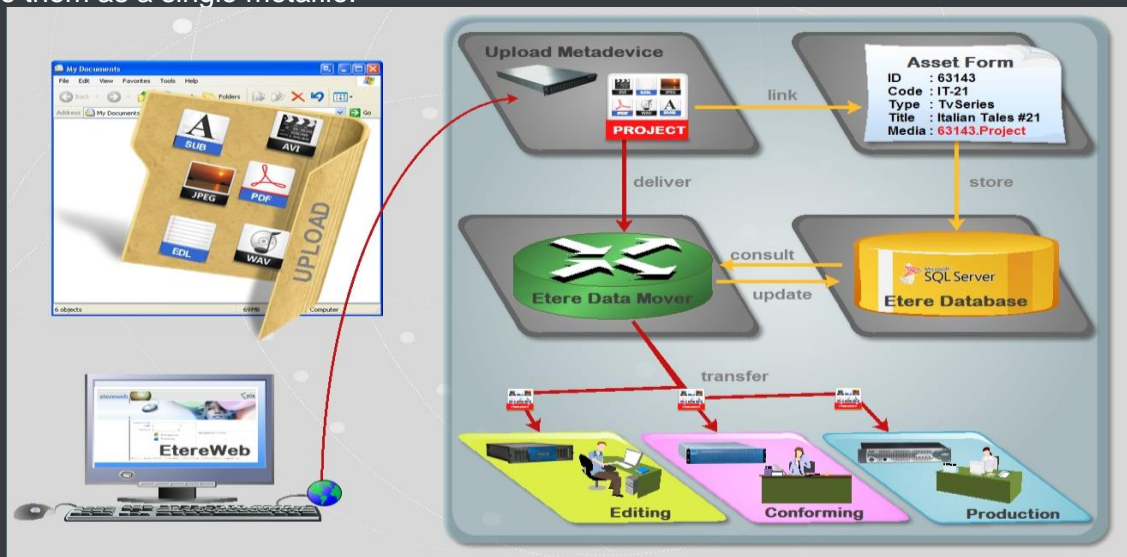
SQL Server	ETERES1
Database	
Database name	EtereMichael
Login	sa
Password	*****
Historical Database	
Database name	EtereMichael_historical
Login	sa
Password	*****
Paths	
EtereWeb	C:\inetpub\wwwroot\EtereWeb\
Deny contemporary access with same account	False
Etere Web Services	C:\inetpub\wwwroot\EtereWSApi\
Creative Area	C:\inetpub\wwwroot\CreativeArea\
Tapeless reception	C:\inetpub\wwwroot\Tapeless\
Workflows	
EtereWeb	CC - WebRtpOrganize
Creative Area	[none]
Tapeless reception	[none]
Request for File Download	CC - Download Request
Tapeless reception	

- Post-upload workflows:



▼ 5.7.6. Multi-file upload support

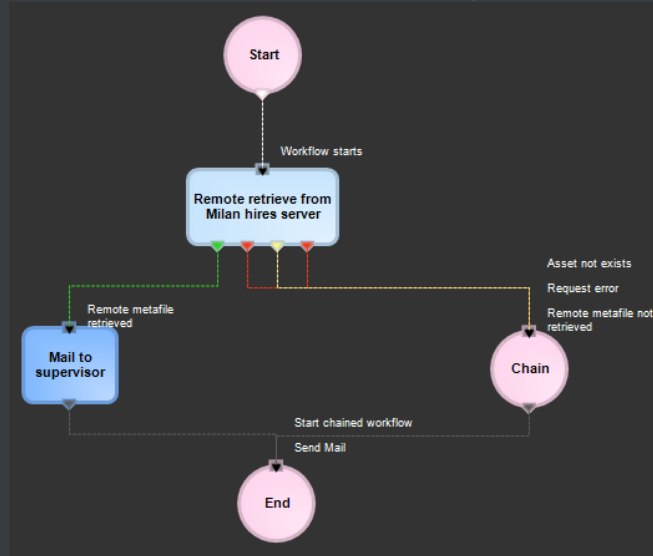
EtereWeb supports not only uploading multiple files with a simple drag and drop action, but also manage them as a single metafile:



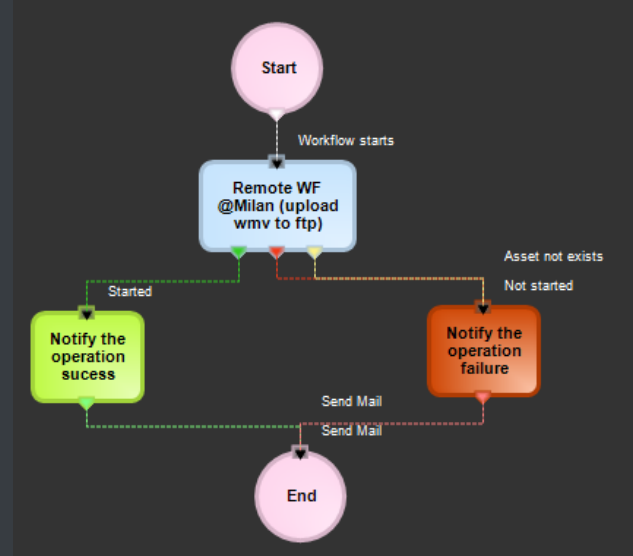
This feature allows NLE systems to, for example, upload into the station's server all the files which make part of a project (e.g. production of promos, conforming of separate scenes, editing of source material, etc.) and deliver them to the related department with a single click and with the reliability of a workflow management.

▼ 5.7.7. Workflow integration with NLE systems

Thanks to the file-based approach of its media management, EtereWeb supports interfacing centralized NLE systems (Avid Transfer manager, Final cut pro server) via workflow. With Etere, it will be possible to transfer video files from and to NLE systems automatically via workflow, these workflows can be attached, for example, to assets which requires editing:



(remote retrieve from a federated system)



(remote upload to ftp)

▼ 5.7.8. Centralized monitoring interface

EtereWeb provides administrators with two key sections from which they will be able to consult:

- **Login Report** : Detailed information about user-specific accesses:

User: ev0666
Station: CHANNEL 1

Media library | Series | Schedule | Tape library | Ingest list | Extra | Air Sales | Tapeless reception | Account

Login report

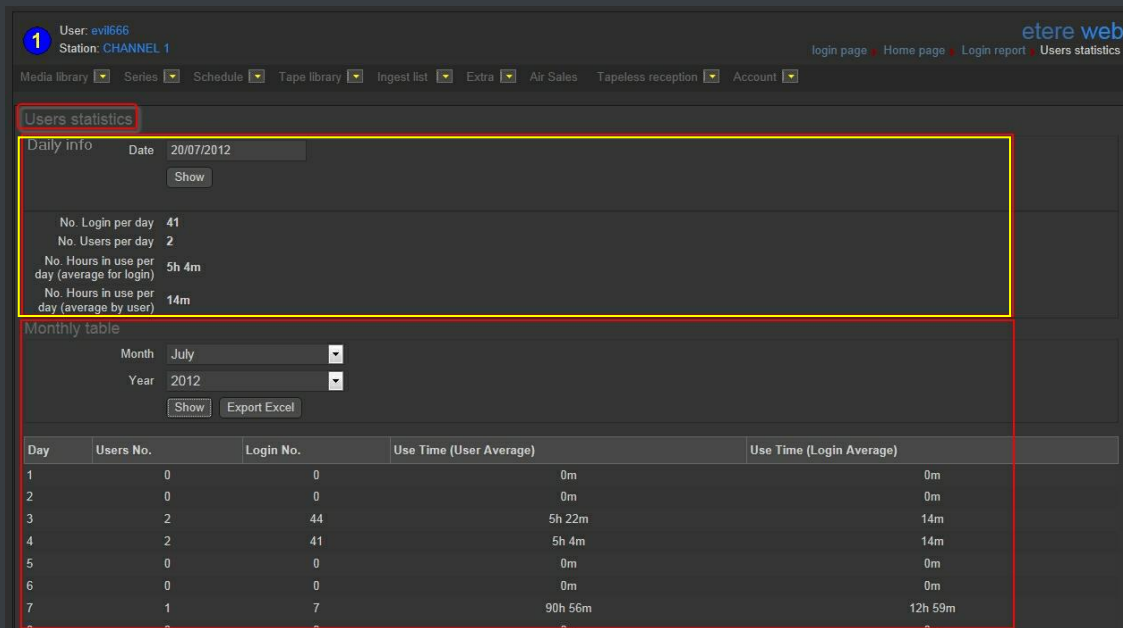
Load

Search (Company Name/Surname)

Search

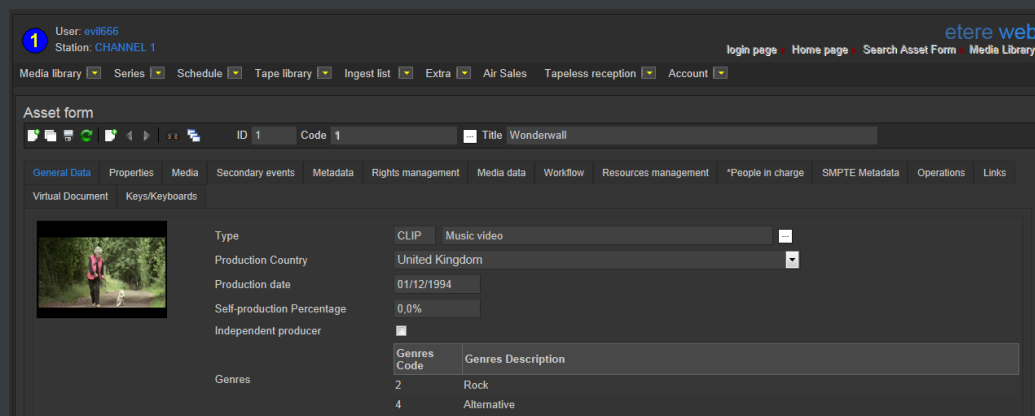
Code	Company Name/Surname	Data Login	Data LogOut	Time in Etere Web
Devil's Agency	Devil's Agency	25/07/2012 15:49:00	25/07/2012 15:59:00	00:10:00
JonesAndJones	Jones & Jones	26/06/2012 16:49:04	26/06/2012 16:49:25	00:00:20
Michael	Vasquez	25/07/2012 15:19:50	25/07/2012 15:19:53	00:00:02
Devil's Agency	Devil's Agency	25/07/2012 15:17:44	25/07/2012 15:27:44	00:10:00
Mark	Fellings	25/07/2012 13:29:49	25/07/2012 13:29:53	00:00:03
Devil's Agency	Devil's Agency	25/07/2012 13:22:31	25/07/2012 13:32:31	00:10:00
System admin	System admin	20/07/2012 17:40:55	20/07/2012 17:50:55	00:10:00
Devil's Agency	Devil's Agency	23/07/2012 17:28:42	25/07/2012 13:22:32	1d 19:53:49
Devil's Agency	Devil's Agency	23/07/2012 15:53:21	25/07/2012 13:22:32	1d 21:29:10
Devil's Agency	Devil's Agency	23/07/2012 10:32:57	23/07/2012 10:42:57	00:10:00

- **User Statistics** : Overall information about daily and weekly accesses:



▼ 5.7.9. Remote archive consultation

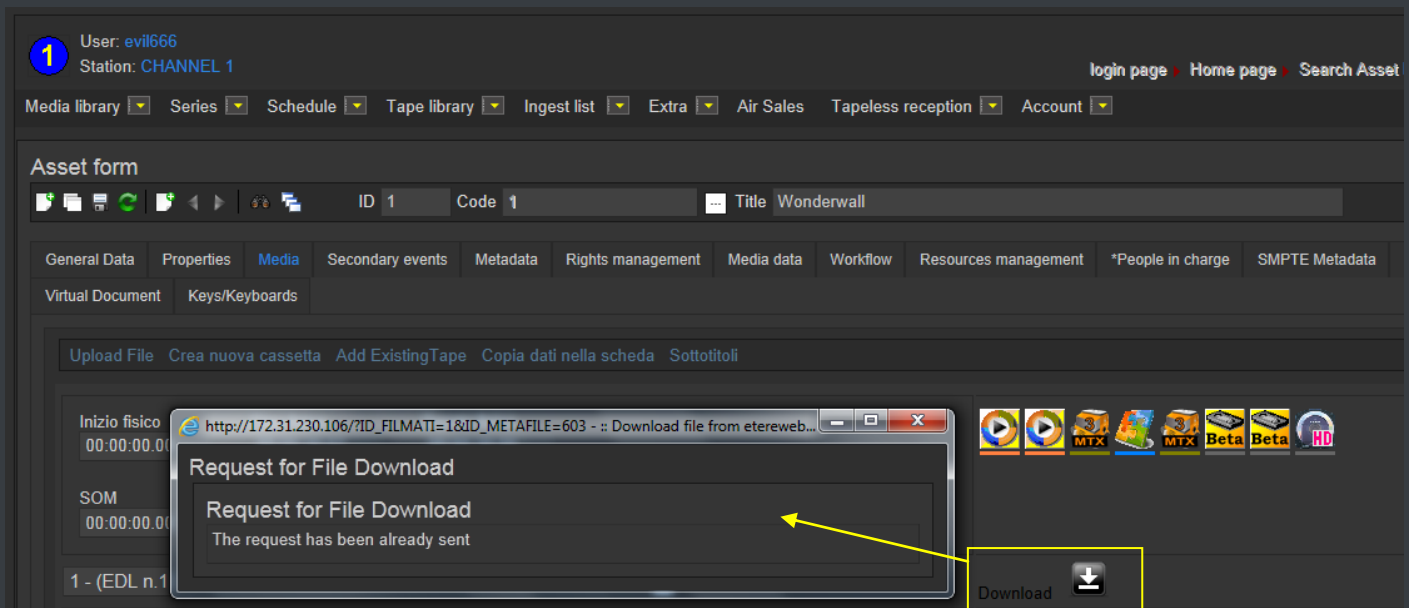
EtereWeb allows web users to check and also control the digital archive remotely via web. Web users will be provided with a fully-tracked access to the most relevant Asset Management operations through a robust search engine and including a wide set of function-specific sections (i.e. general information, media, properties, metadata, rights, technical data, workflows and much more).



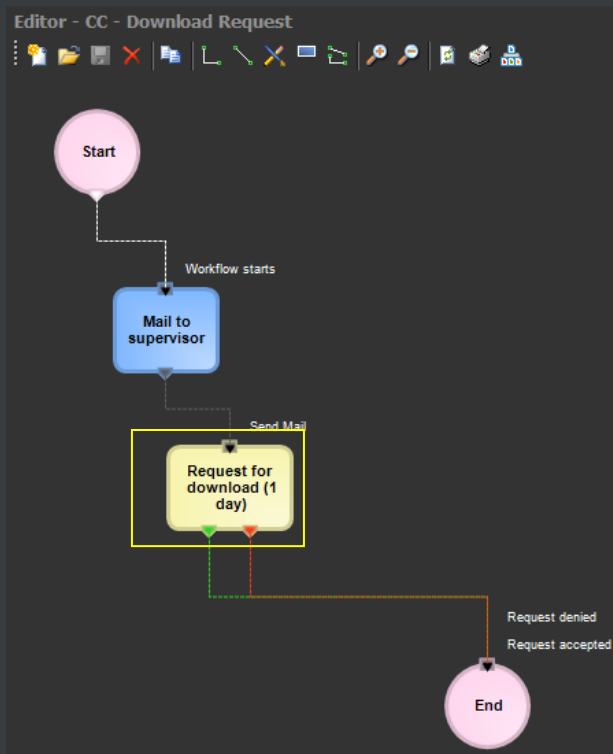
Specially, a section dedicated to the media management will provide information regarding all media files associated to the asset, indicating for all of them the timecode details and EDL configuration with further preview/cut/download/upload capabilities.

▼ 5.7.10. User Permissions

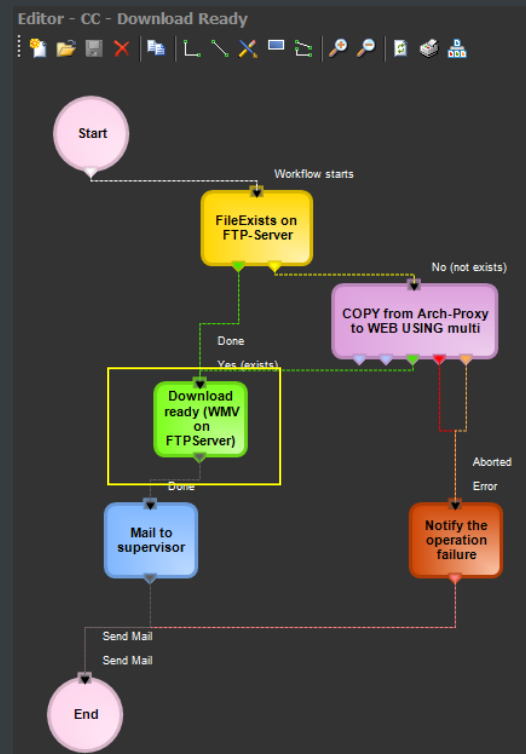
EtereWeb allow stations not only to share the right files to the right persons but it also allows sharing contents with the right permission levels; this capability is based on granting/denying function-specific permissions through Etere Worksheets, the module that allows web users to request temporary permission for specific functions (e.g. download a file linked to a certain asset):



Web requests are managed via workflow to allow a custom and automatic launch of worksheets:



(download request)



(download ready)

Supervisors count with a dedicated interface for viewing pending requests and accept/deny them:

Media Library, michael, CHANNEL 1

File Tools Show Utilities ?

CHANNEL 1

ID 1 Code 1 Title Wonderwall

Tapeless reception TechnicalData SMPTE Metadata Links SIAE Operations Keys/Keyboards People in charge Proposal Search General Data Properties Media Workflow Resources management Secondary Events Metadata Rights management

Requester Devil's Agency Request Download metafile Codec WMV

Notes Response Request accepted

Requester Jones & Jones Request Download metafile Codec WMV

Notes Response

Hide temporary rights

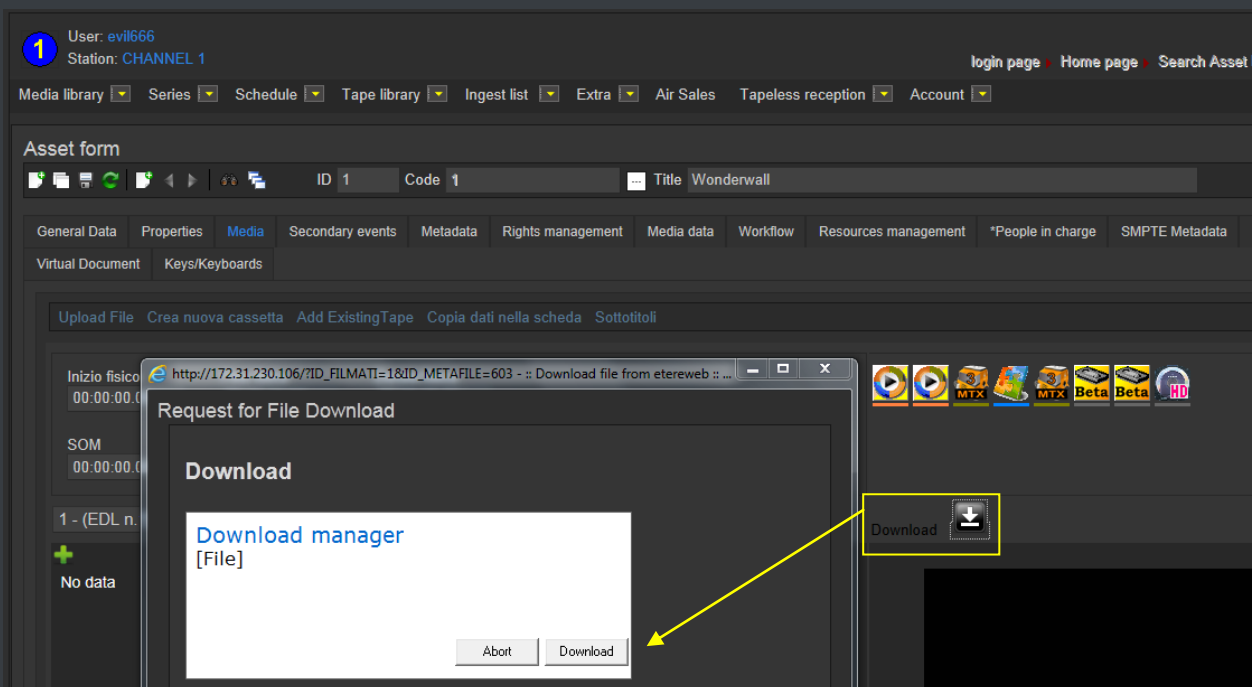
Requester	Request	Codec	Expiry date
Skywalker Luke	Download metafile	WMV	05/12/2124 15:18:50

Once the requested is evaluated, web-users will automatically receive an email notification containing the information (e.g. ID, codec, fixed note and an evaluation note) about the asset for which the

request has been performed. The email notification will be sent to the email specified in the personal data of the web-user who performed the request, this, depending on the entity type:

From:	supervisor@mytv.com [system-profile email account]
To:	user5@agencies.com [personal-data email account]
Subject:	<p>WORKFLOW INFO</p> <p>----- (workflow status report) -----</p> <p>Personal data ID : 7 [personal-data code]</p> <p>workflow: CC - Download for NLE [workflow holding the web request action]</p> <p>status: Workflow active</p> <p>result: 0</p> <p>message: <empty></p>

Finally, in case the request is accepted, the web-user will be now allowed to download the requested file(s) through EtereWeb:

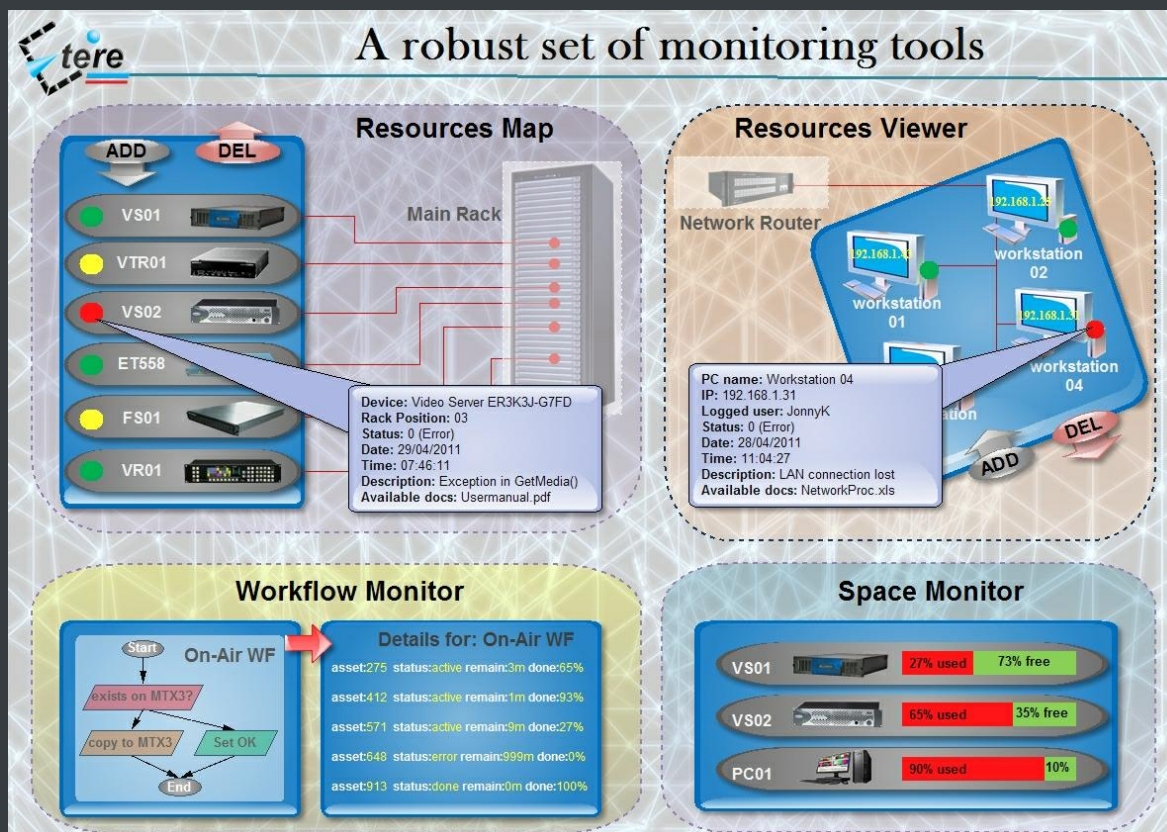


▼ 5.7.11. Security integration

EtereWeb works perfectly behind routers so remote access and ftp transfers are drastically improved. NLE systems can deliver contents via Etere Web as a digital equivalent of physical reception, where selected people can deliver video and metadata to the station, but owing to its digital nature, operations are perfectly organized, performed and logged, avoiding loss of any content information. Moreover, as a further security level, Etere provides direct authentication of web users through the station's active directory domain.

▼ 5.8. Monitoring Console: A complete SNMP monitoring

The **Monitoring Console** is a tool developed to help supervisors to have a global overview of the system, permitting them to monitor any Etere module which collects and stores its management information (errors, warnings, etc.) through the locally installed **SNMP Agent** which sends messages containing this information to a remote console which in this way monitors all the modules; through this console the operator can decide about the receiving policies (content, validity, filters, etc.).



The **Monitoring Console** is a key part of the broadcasting process because it permits to have a complete report of the way the Etere modules are working, allowing to catch errors, store them in a database for a further analysis and also forward them to another console (forward the message to the pertinent operator who is intended to solve it) and thus saving time and resources on real-time which are invaluable assets in the broadcasting business.

▼ 5.8.1. SNMP monitoring support

In order to improve monitoring of devices, modules and workflows all Etere components are automatically subscribed to an SNMP Service, so it will monitor the periodic heartbeats sent via SNMP by the components. The Monitoring Console detects missing heartbeats and sends both a visual-alarm and an e-mail notification to the operations department. Owing to the use of this feature, the general health of the Etere system can be further examined to isolate raised faults.

Snmp Snmp filter

Name: By range 0 - 99999999

ERRORS

INFORMATION

By GPI

ETERE-AUTO-FILTER

WARNING

0 - 5000

Filter name: By range 0 - 99999999 Active ☒

General

Owner: Description:

Login name: PC name:

Site:

Severity

☒ Information ☒ Warning ☒ Error ☒ Unknown

Error code

From: 0 To: 99999999

IP address

From: 172.31.230.1 To: 172.31.230.255

Action

☐ Manage ☐ Archive ☐ Only re-send ☒ Manage and re-send ☐ Discard

Alarm type

☒ Send email To email address: michael@etere.eu

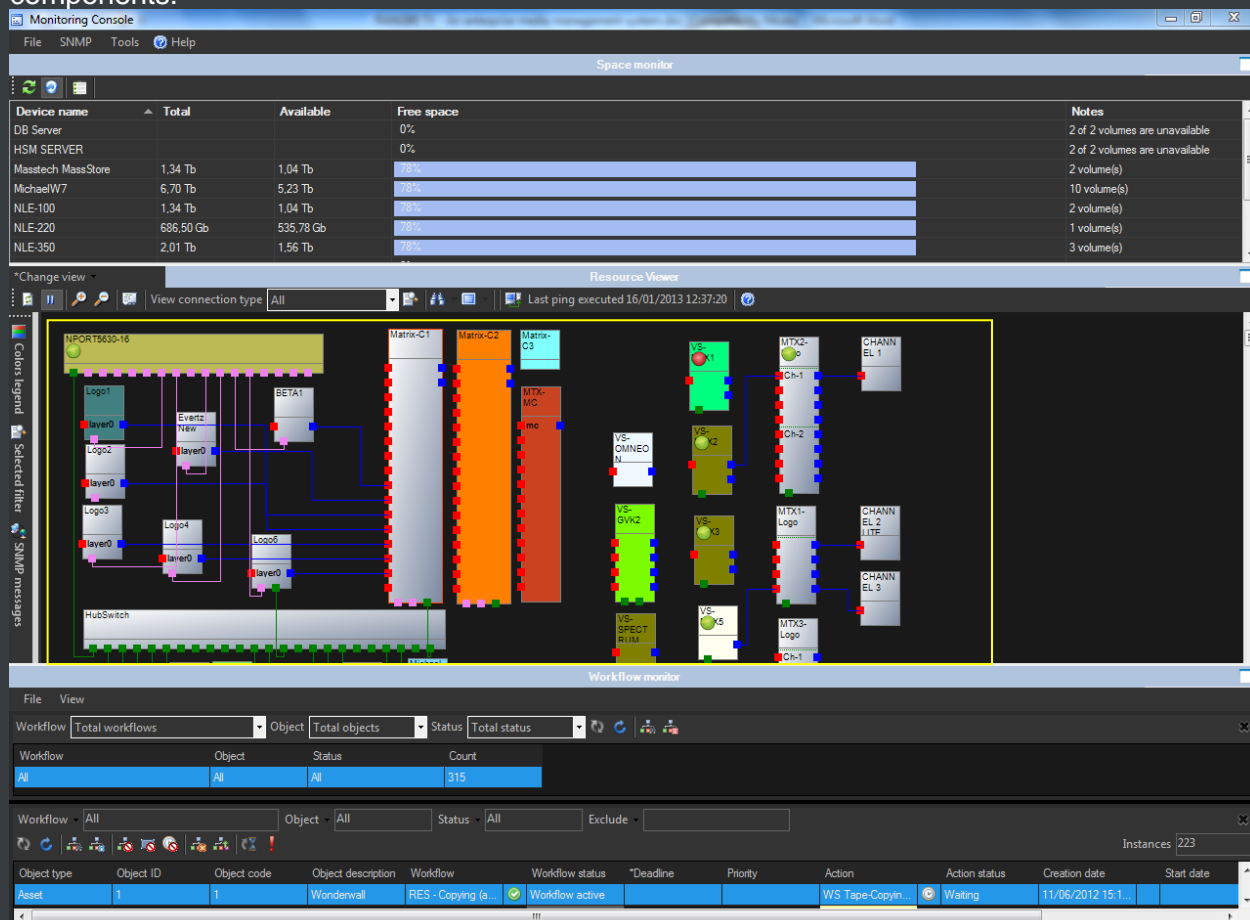
☒ Sound File Name: C:\windows\media\notify.wav

☒ GPI Device number: 1 *Switches: MICHAELW7

GPI test: ☐ ☐

▼ 5.8.2. Visual real-time monitoring

In order to improve monitoring of modules and devices, all Etere components are automatically subscribed to the [Etere SNMP Service](#), so it will monitor the periodic heartbeats sent via SNMP by the components.



▼ 5.8.3. Robust monitoring features

The **Monitoring Console** is smartly divided across different panels to allow a quick monitoring of specific functions. Tools included in this module are listed below:

Module	Description
SPACE MONITOR	Visualize the storage space of all devices for which metadevices are defined (e.g. video servers, workstations, servers, etc.).
RESOURCE MAP	View and allocate resources (e.g. workstations) across the system, thus allowing to, for example, indicate the rack position of the workstation on which an error has occurred.
WORKFLOW MONITOR	Consult all workflows (transfers, checks, requests and much more) executed on the certain station, allowing also to view and manage them each one of them.
RESOURCE VIEWER	Show a map of all resources configured in the system, showing in real-time their connection status and SNMP messages.
STATUS BAR	Display the real-time status of monitoring background tasks such as "SNMP real-time checking", "Processes monitor", "Check pingable devices from this console" , "Collect and check PC counters" and "GPI signals".

▼ 6. KEY BENEFITS

With the new **ETERE** system, **TV3 Malaysia** will benefit from all the advantages derived from **Etere MERP**, present and future **operational benefits** are following mentioned:

- ✓ **Flexibility**, on meeting all requirements by proving a versatile media management system tightly integrated with all the metadata and equipment
- ✓ **Scalability**, to increase the capturing/playing channels without altering the workflow complexity, minimizing operational overheads overall costs
- ✓ **Efficiency**, achieved by reducing repetitive manual operations, allowing to define and include in advance in automatic preset workflows
- ✓ **Reliability**, derived from the use of streamlined workflows provided with detailed logs for tracking the overall and individual functioning of the system
- ✓ **Accuracy**, on all phases, reducing the risk of mistakes when archiving data since all archived contents are continuously checked and monitored
- ✓ **Integration**, of non-linear editing systems to allow direct access to archive through a web interface empowered with the highest security standards
- ✓ **Security**, across all operations based on specific user permissions depending on the structure of the customer's Active Directory domain
- ✓ **Usability**, a sophisticated interface guarantees a smooth use and intuitive management of media content, from ingest to delivery

Etere: a consistent system!

Etere is an international leader in the media market. Etere develops and distributes a wide range of high technology software for broadcasting and media businesses. With more than 20 years of experience, Etere provides powerful, flexible, cost-effective, high-performance, end-to-end media solutions. Etere is the only company worldwide that can offer you a solution to all your media needs in one single package.

Etere is the only solution 100% workflow based for all broadcast and media environments. It's a common framework where there is real-time sharing of all the data among several applications to manage all media business requirements. The workflow approach allows a fully customized design with edge performances.

From its headquarters in Tolentino, Italy, Etere guarantees the best after-sales support service on the market with engineers ready to give professional assistance 24 hours a day, 7 days a week. The service includes voice, email, VPN and VoIP with unlimited calls and connection time, and a pro-active system to help diagnose problems before they appear.

Contact Information:

Etere

Email: marketing@etere.com

Website: www.etere.com