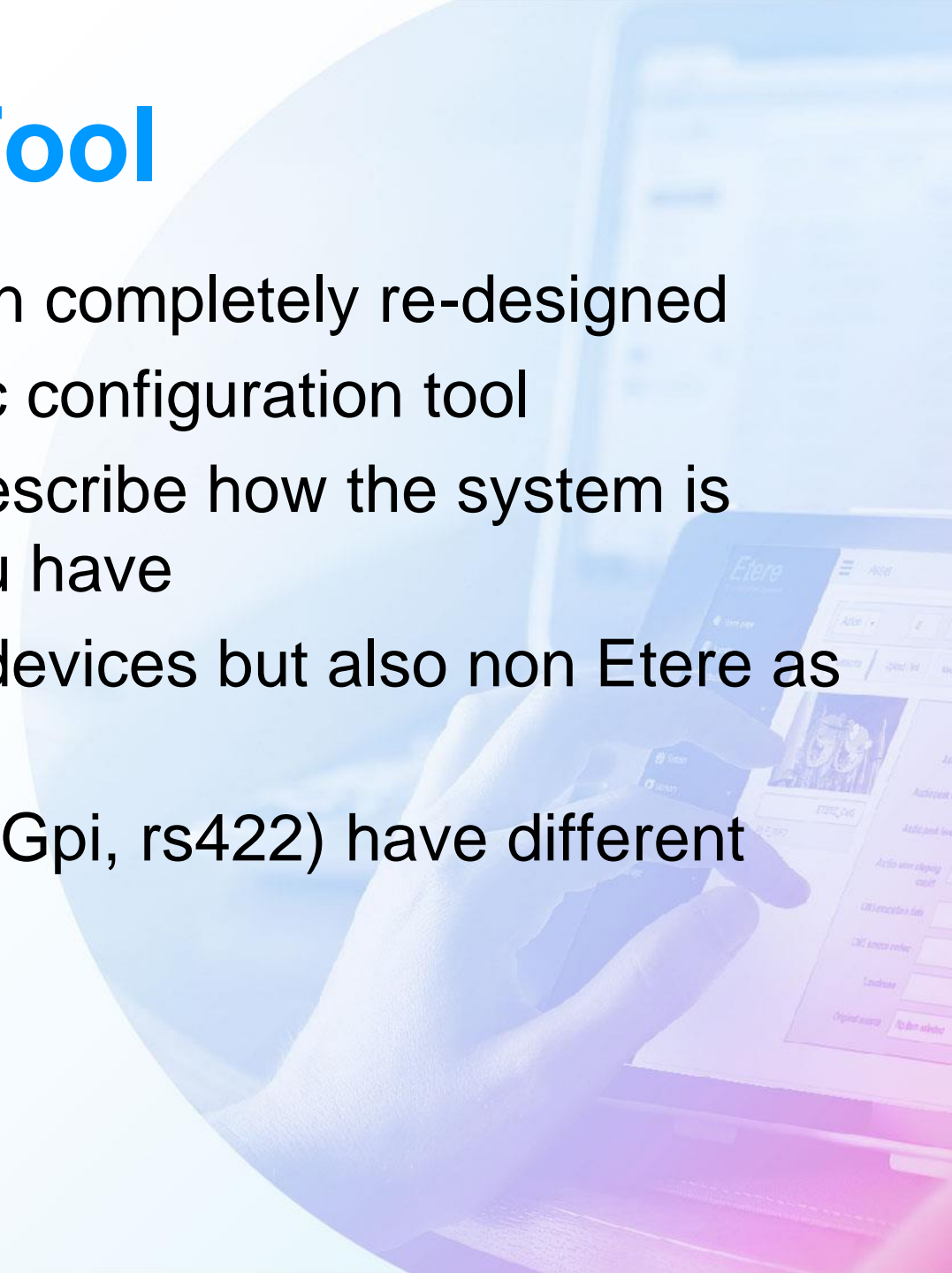




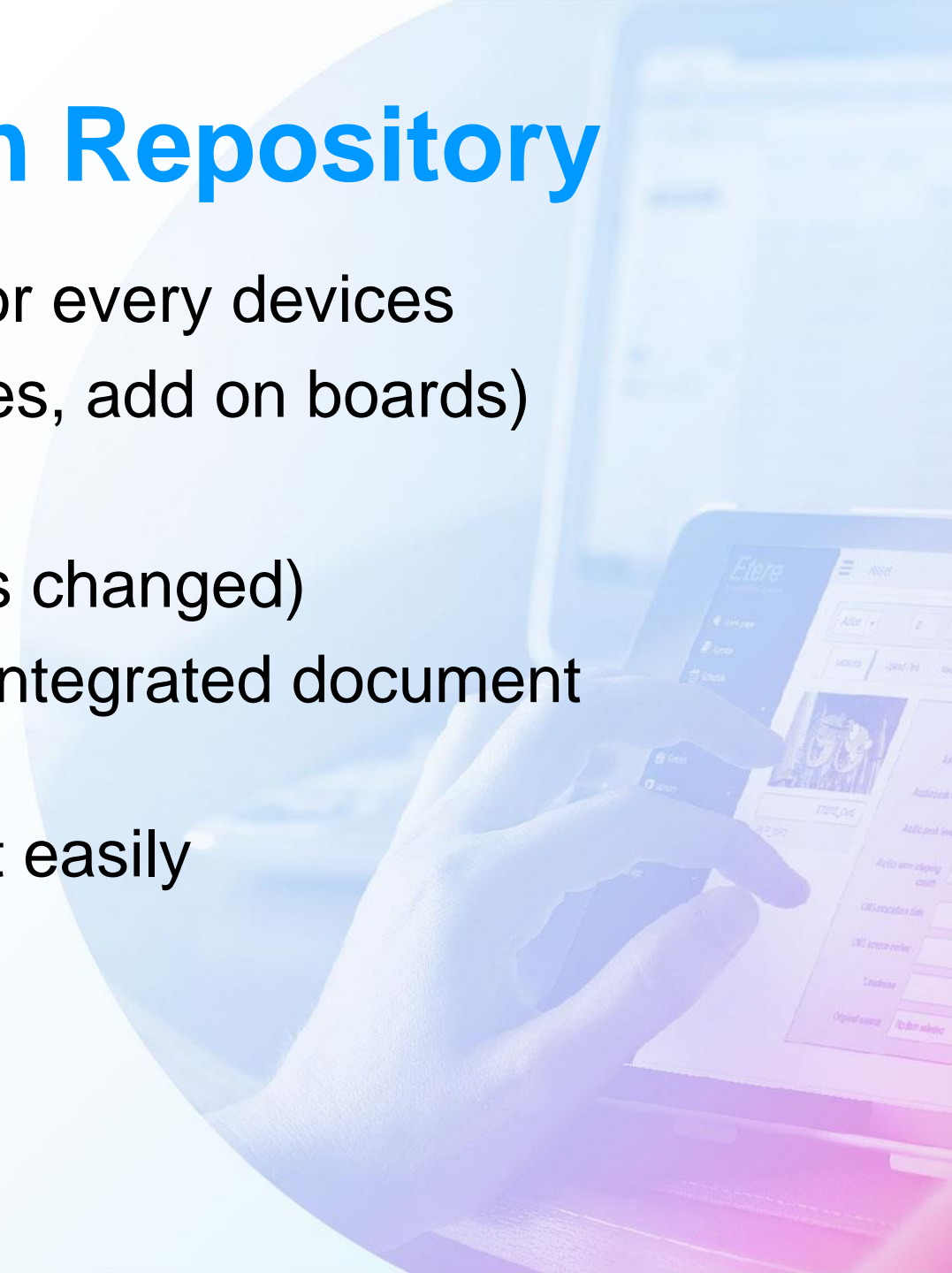
# Graphic Tool

- The SNMP console in Etere has been completely re-designed
- The console is also the Etere graphic configuration tool
- Creating a simple graphic you can describe how the system is connected, and how many object you have
- Etere console allows to insert Etere devices but also non Etere as network switches, routers, firewalls
- Different connections (Sdi, Ethernet, Gpi, rs422) have different colors



# Central Information Repository

- The SNMP console is able to store for every devices
  - The configuration details ( IP, drives, add on boards)
  - The SNMP error log
  - Your operation log ( as VTR heads changed)
  - All the service manuals using the integrated document management
  - The position in the Racks, to find it easily



# Configure SNMP Messages

SNMP Console  
connection parameters

**Options**

Resource | **Snmp** | Snmp filter

**Parameters**

\*Receive trap mode  
☒ \*By this console ☐ \*By Windows service ☐ None

**Messages validity (day)**

Information	15
Warning	60
Error	90
Unknown	90

**General**

Update every (sec.) 60

\*Live check every (min.) 20

☒ Receive not-Etere message

**\*Processes monitor**

\*Check every (sec.) 900

☒ \*Workflow loop  
☒ \*SQL Agent failure  
☒ \*SQL Service broker failure

**E-mail**

Smtp IP 172.31.230.6 Smtp port 25

Email from michael.vasquezotazu@ Login type None

Account michael Password \*\*\*\*\* **Test**

**Snmp send trap test**

Error code 1 Severity 2 **Test**

# Filters

**Options**

Resource | Snmp | **Snmp filter**

**Name**

- Only-By-Michael
- RECEIVE-ALL
- ETERE-AUTO-FILTER
- Only-Errors
- Filter 01
- Filter 02

Filter name: Only-By-Michael Active ☐

**General**

Owner:  Description:

Login name: Michael Pc name:

Installation: Etere 20.0.1

**Severity**

☒ Information ☒ Warning ☒ Error ☒ Unknown

**Error code**

From: 0 To: 16777215

**IP address**

From: 172.31.230.0 To: 172.31.230.255

**Action**

☒ Manage ☐ Archive ☐ Only re-send ☐ \*Manage and re-send ☐ Discard

**Alarm type**

☒ Send email To email address: michael.vasquezotazu@etere.eu

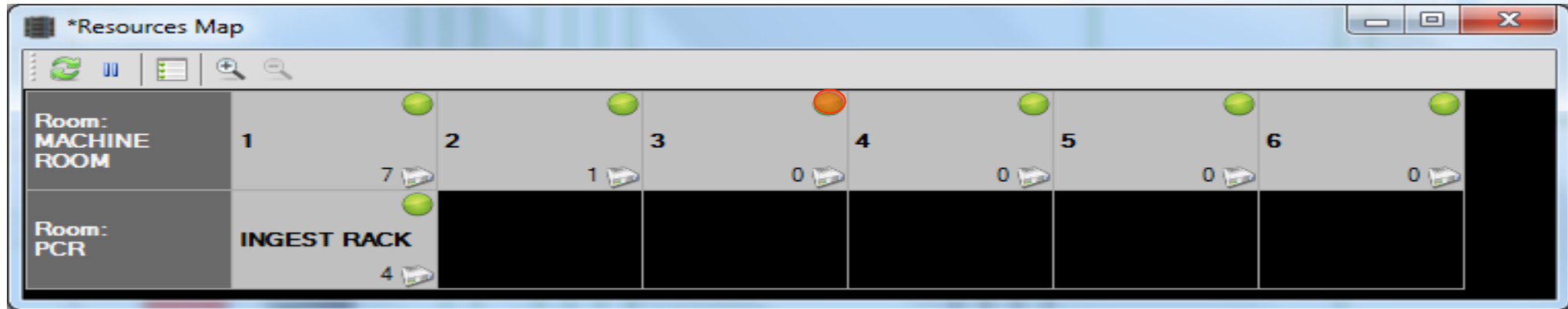
☐ Send sms Subject (number):

☒ Sound File Name: C:\windows\media\notify.wav

New Apply

Create **FILTERS** to receive only those messages which are “relevant” to you

# Room View



- This room view allows you to see all the station in one single view
- An error in a room and rack is displayed as red light



# Rack Details

Room: MACHINE ROOM					
1	2	3	4	5	6
24		24		24	
23		23		23	GSS4
22	NPort 1	22	OMN6	22	
21	NETWORK SWITCH	21		21	PG4
20		20		20	
19		19		19	STORAGE
18		18		18	
17		17		17	
16	MTX	16		16	
15		15		15	
14		14		14	
13		13		13	
12	MEMORY	12		12	
11	TAPELESS RECEPTI...	11		11	
10		10		10	
9	AUMAIN	9		9	
8		8		8	
7	AUCLONE	7		7	
6	MTX LOGO	6		6	
5		5	HSM1	5	
4	MASTER CONTROL	4	HSM2	4	
3		3		3	
2		2	ETLIBRARYWS2008	2	
1		1		1	

# SNMP Error History

Monitoring Console

File SNMP Tools Help

Space monitor

Device name	Total	Available	Free space	Notes
DB Server			0%	2 of 2 volumes are unavailable
HSM SERVER			0%	2 of 2 volumes are unavailable
Masstech Mass				2 of 2 volumes are unavailable
MichaelW7				10 of 10 volumes are unavailable
NLE-100				2 of 2 volumes are unavailable
NLE-220				1 of 1 volumes are unavailable
NLE-350				3 of 3 volumes are unavailable
OmneonLR				1 of 1 volumes are unavailable
P2 Storage Ser				7 of 7 volumes are unavailable
VS-MTX1				

All SNMP messages - Found(734)

Types	Device	Date	Description	Error code	Status
✖	172.031.230.145	28/11/2012 17:05:10	device VS-MTX1 (IP=172.31.230.145) DO ...	25000	Not archived
✖	172.031.230.106	28/11/2012 11:48:56	The application etereau.exe [25620] on MI...	5000	Not archived
✖	172.031.230.106	28/11/2012 10:58:51	The application EtereMM9.exe [2124] on ...	5000	Not archived
✖	172.031.230.106	28/11/2012 10:57:51	The application EtereMM9.exe [2124] on ...	5000	Not archived
✖	172.031.230.106	28/11/2012 10:56:51	The application EtereMM9.exe [2124] on ...	5000	Not archived
✖	172.031.230.106	28/11/2012 10:55:51	The application EtereMM9.exe [2124] on ...	5000	Not archived
✖	172.031.230.106	28/11/2012 10:54:51	The application EtereMM9.exe [2124] on ...	5000	Not archived
✖	172.031.230.106	28/11/2012 10:53:51	The application EtereMM9.exe [2124] on ...	5000	Not archived
✖	172.031.230.079	19/11/2012 17:19:58	Genlock status is <UNLOCKED>Genlock ...	402653186	Not archived
⚠	172.031.230.079	19/11/2012 17:17:56	c3 worker process warningPrivate Bytes ha...	402653186	Not archived
⚠	172.031.230.079	19/11/2012 17:16:54	c2 worker process warningPrivate Bytes ha...	402653186	Not archived
✖	172.031.230.079	19/11/2012 16:19:58	Genlock status is <UNLOCKED>Genlock ...	402653186	Not archived
⚠	172.031.230.079	19/11/2012 16:17:56	c3 worker process warningPrivate Bytes ha...	402653186	Not archived
⚠	172.031.230.079	19/11/2012 16:16:54	c2 worker process warningPrivate Bytes ha...	402653186	Not archived
✖	172.031.230.079	19/11/2012 15:19:58	Genlock status is <UNLOCKED>Genlock ...	402653186	Not archived

Message type

☐ Information ☒ Warning ☐ Error ☐ Unknown

Period

☒ All ☐ Last week ☐ Today ☐ Last month

View

☒ All ☐ Archived ☐ Not archived

Order

☒ By period ☐ By type

Other

☐ View device name

Instances 219

Action	Action status	Creation date	Start date	Estimated end date
S Tape-Copyin...	Waiting	11/06/2012 15:1...		
S Promo Creati...	Running	11/06/2012 15:1...		
OPY from Arch-...	Waiting	07/09/2012 09:3...		
S Editing for ce...	Running	20/07/2012 15:4...		
request for dow...	Waiting	20/06/2012 11:5...		
S Tape-Copyin...	Waiting	11/06/2012 15:1...		
eDelete on SE...	Waiting	23/03/2011 12:5...		
annual quality ch...	Waiting	11/06/2009 12:5...		



# Service Log

The screenshot displays the 'Resources Editor' application. On the left is a 'Resources' tree with categories like Archives, Channels, Etere PC's, Miscellaneous, Video Mixers, Video Routers, Video Servers, and VTR. The main 'Editor' pane shows a network diagram with a central 'HUB1' connected to various devices including 'ARCHIVIO', 'ETLIBRARYWS 2008', 'HSM', 'ETBUGFIXEDW7', 'AUCLO NEW7', 'MDK', and 'BETA'. Overlaid on the editor are three windows:

- Properties ARCHIVIO (23)**: A window showing details for 'GENERIC SERVER STORAGE'.

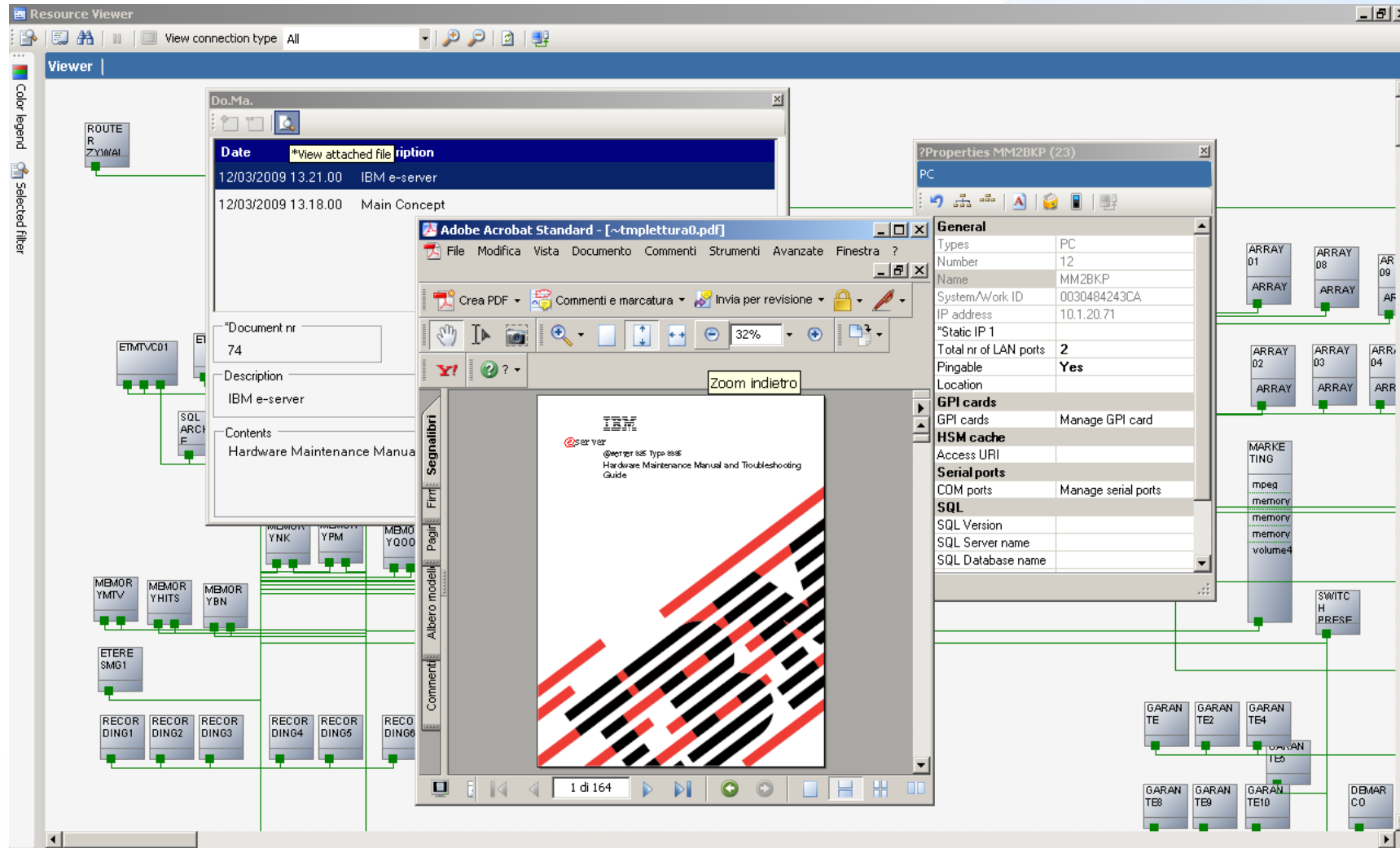
General	
Type	GSS
Number	1
Name	ARCHIVIO
IP address	
Pingable	No
Location	
Volume	Manage volumes
- Device log operation**: A window displaying a log table.

Date	Description	User
01/06/2011 03.16.34	Replaced hard disk #014	sis
10/07/2011 03.17.38	Changed fan #2	sis
- Do.Ma.**: A window for adding a device log operation.

Date	Description
10/07/2011 03.20.00	Fan system service manual

Below the table are input fields for 'Document nr' (3), 'File type' (.PDF), and 'User' (SIS), followed by 'Description' and 'Contents' text areas, both containing 'Fan system service manual'.

# Service Manuals



# Web Rack View

Room: MACHINE ROOM  
Rack: 1

24	
23	
22	NPort1
21	NETWORK SWITCH
20	NETWORK SWITCH
19	NETWORK SWITCH
18	NETWORK SWITCH
17	
16	MTX
15	MTX
14	MTX
13	
12	MEMORY
11	TAPELESS RECEPTION
10	
9	AUMAIN
8	
7	AUCLONE
6	MTX LOGO
5	MTX LOGO
4	MASTER CONTROL
3	MASTER CONTROL

Room: MACHINE ROOM  
Rack: 2

24	
23	
22	LTO LIBRARY
21	LTO LIBRARY
20	LTO LIBRARY
19	LTO LIBRARY
18	LTO LIBRARY
17	LTO LIBRARY
16	LTO LIBRARY
15	LTO LIBRARY
14	LTO LIBRARY
13	LTO LIBRARY
12	LTO LIBRARY
11	LTO LIBRARY
10	LTO LIBRARY
9	LTO LIBRARY
8	LTO LIBRARY
7	LTO LIBRARY
6	LTO LIBRARY
5	LTO LIBRARY
4	LTO LIBRARY
3	LTO LIBRARY

Room: MACHINE ROOM  
Rack: 3

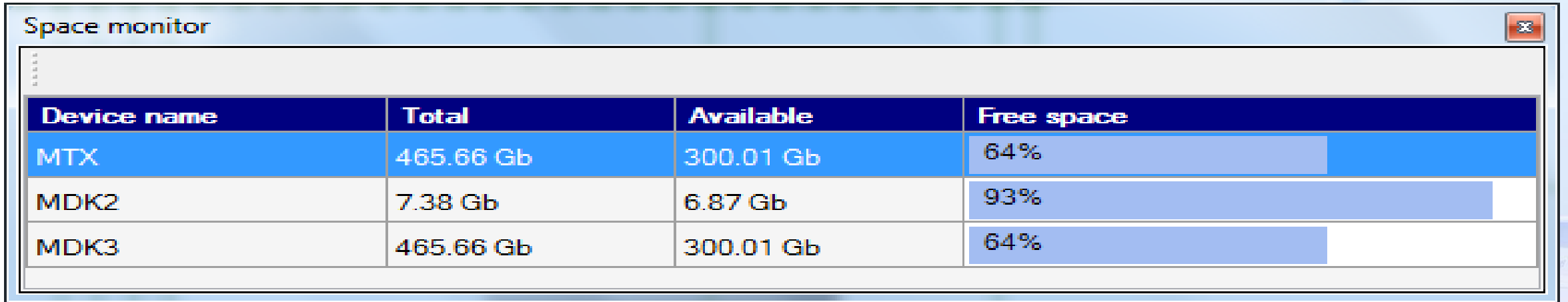
24	
23	
22	OMN6
21	OMN6
20	OMN6
19	OMN6
18	OMN6
17	OMN6
16	OMN6
15	OMN6
14	OMN6
13	OMN6
12	OMN6
11	OMN6
10	OMN6
9	OMN6
8	OMN6
7	
6	
5	HSM1
4	HSM2
3	

Room: MACHINE ROOM  
Rack: 4

24	
23	
22	MDK2
21	MDK2
20	MDK2
19	
18	MDK3
17	MDK3
16	MDK3
15	
14	MDK4
13	MDK4
12	MDK4
11	
10	MDK5
9	MDK5
8	MDK5
7	
6	
5	PREVIEW
4	PREVIEW
3	PREVIEW

100%

# Space Monitor



The screenshot shows a window titled "Space monitor" with a close button in the top right corner. Inside the window is a table with four columns: "Device name", "Total", "Available", and "Free space". The table lists three devices: MTX, MDK2, and MDK3. Each row includes a horizontal bar chart representing the free space percentage. The background of the slide features a faint image of a hand interacting with a tablet.

Device name	Total	Available	Free space
MTX	465.66 Gb	300.01 Gb	64%
MDK2	7.38 Gb	6.87 Gb	93%
MDK3	465.66 Gb	300.01 Gb	64%

- The space monitor control cloud and video server
- If a space threshold is reached selected workflows are launched until space go below limit
- Thresholds and workflows configurable

# Workflow Monitoring

Monitoring Console

FileSNMPToolsHelp

Workflow monitor

FileView

WorkflowTotal workflowsObjectTotal objectsStatusTotal status

Workflow

Object

Status

Count

All

All

All

398

WorkflowAllObjectAllStatusAllExclude

Instances157

Object type	Object ID	Object code	Object description	Workflow	Workflow status	Deadline	Priority	Action	Action status	Creation date	Start date	Estimated end date	Estimated	Parameters
Asset	1	2001	2001: A Space O...	TEST WF2	Workflow active			ARCHIVE FROM...	Waiting	18/02/2016 10.4...				
Asset	3	ALIEN	ALIEN THE MOV...	CONTENT CHECK	Workflow fault									
Asset	3	ALIEN	ALIEN THE MOV...	Production	Workflow abort									
Asset	3	ALIEN	ALIEN THE MOV...	RESTORE	Workflow fault									
Asset	8	SKY	SKY SPOT	EDITING	Workflow active			APPROVAL	Running	08/09/2012 12.2...				
Asset	11	ANALYZETHIS	ANALYZE THIS	RESTORE	Workflow active			Restore from HSM	Waiting	14/09/2014 16.3...				
Asset	11	ANALYZETHIS	ANALYZE THIS	EDITING	Workflow active			Dubbing	Waiting	18/02/2016 10.4...				
Asset	11	ANALYZETHIS	ANALYZE THIS	DOWNLOAD RE...	Workflow active			DOWNLOAD RE...	Running	31/01/2013 13.3...				
Asset	11	ANALYZETHIS	ANALYZE THIS	Production	Workflow active			AudioDubbing by...	Waiting	08/04/2013 15.4...				
Asset	11	ANALYZETHIS	ANALYZE THIS	AFTER INGEST 2	Workflow active									
Asset	11	ANALYZETHIS	ANALYZE THIS	CONTENT CHECK	Workflow abort									
Asset	11	ANALYZETHIS	ANALYZE THIS	Extract Audio Ch...	Workflow active			Extract Audio Ch...	Waiting	18/02/2016 10.4...				
Asset	13	FAF	FAST AND FURI...	EDITING	Workflow active			APPROVAL	Waiting	23/02/2016 11.3...				
Asset	13	FAF	FAST AND FURI...	AFTER INGEST	Workflow active			ARCHIVE FROM...	Waiting	23/02/2016 11.0...				
Asset	13	FAF	FAST AND FURI...	subtitle	Workflow active			Subtitle re-check	Waiting	20/05/2014 13.5...				
Asset	13	FAF	FAST AND FURI...	RESTORE	Workflow active			RESTORE FRO...	Waiting	14/09/2014 16.3...				
Asset	13	FAF	FAST AND FURI...	censorship	Workflow active			edit for censorship	Waiting	15/09/2014 10.5...				
Asset	35	FTV_AQUA	AQUA BENDITA ...	Autocensor	Workflow active			Censor approve	Waiting	30/05/2012 11.1...				
Asset	35	FTV_AQUA	AQUA BENDITA ...	censorship	Workflow fault									
Asset	36	FTV_BLACKBOX	BLACKBOX WO...	censorship	Workflow fault									
Asset	36	FTV_BLACKBOX	BLACKBOX WO...	Autocensor	Workflow active			Censor approve	Waiting	30/05/2012 11.1...				
Asset	36	FTV_BLACKBOX	BLACKBOX WO...	AFTER INGEST	Workflow fault									
Asset	37	FTV_DESIGNER	FTV_DESIGNER	Autocensor	Workflow active			Censor approve	Waiting	30/05/2012 11.1...				
Asset	37	FTV_DESIGNER	FTV_DESIGNER	censorship	Workflow active			edit for censorship	Waiting	17/03/2016 17.2...				
Asset	37	FTV_DESIGNER	FTV_DESIGNER	EDITING	Workflow active			Dubbing	Waiting	10/09/2012 12.4...				
Asset	37	FTV_DESIGNER	FTV_DESIGNER	ActionTest EDITI...	Workflow active			EDITING	Running	17/03/2016 17.3...				
Asset	37	FTV_DESIGNER	FTV_DESIGNER	ActionTest DOW...	Workflow active			DOWNLOAD FILE	Waiting	17/03/2016 17.5...				
Asset	38	FTV_KAREN	FTV_KAREN	CONTENT CHECK	Workflow active			APPROVAL	Waiting	17/03/2016 18.2...				
Asset	40	FTV_PARADE	STUDENT BEAC...	RESTORE	Workflow fault									
Asset	42	CSU MIAMI 0001	CSU MIAMI No. 0...	Production act...	Workflow active			CNC Scanning	Waiting	20/05/2014 13.2...				

idle (00:09:13)